

SOCIETY

In the atmosphere of a typical newspaper office under the supervision of a woman editor the annual journalism banquet will be held Thursday evening at the Annex cafe at 6 o'clock.

Delta Gamma Party. Allowen Theme Used. With decorations following Haloween colors, the members of Delta Gamma were hostesses at a house party on Saturday evening.

Martha Brinkerhoff Returns From Sojourn in Europe. Martha Brinkerhoff, 30, Pewnee City, returned Monday from Europe where she has been since July 1.

Dorothy Uptegrove Wright of Moorehead, Ia., and Myrtle Uptegrove Williams of Plainview, were week end guests of Gamma Phi Beta.

Under moonless skies



AH-H-H! So sad. Look at the poor student (?) lurking among ye posies whilst some fair one keeps him waiting as ye rain beats down.

Fish Brand Slickers are made in a wide choice of models, weights, colors. Smartly cut. Long-wearing. Sold everywhere.



U. S. COLLEGES HAVE LARGER ENROLLMENT

Stanford Survey Shows An Increased Attendance This Year.

PART OF DEPRESSION

PALO ALTO, Calif.—Increased enrollment in American colleges has accompanied the business depression a survey of colleges made by the Stanford registrar's office indicates.

One of the largest increases recorded is that of the University of Minnesota. There the gain was 499 students, making a grand total of 11,226.

The theory advanced by Professor C. N. Reynolds, acting head of the Stanford University economics department here, offers business depression as a possible explanation for the increased enrollment.

"There is always a marginal group of young people," says Reynolds, "who will go to a university if conditions are favorable to that, or will enter business if at the time it seems the most desirable."

"When depression is prevalent and jobs scarce these young men and women decide upon a long preliminary investment. More over in the scarcity of opportunity, parents have come to realize that training is necessary for success."

Business Men Help. "On the other hand, there is another group of students financially dependent on themselves whose continuance depends on earning during the summer and often during the academic year and this group suffers. However, business men are always willing to give these college students a boost whenever possible, although many employment bureaus maintained at the institutions alleviate their condition with odd job employment."

"In general, equilibrium between the two bodies of students is greatly affected by the condition of general business. Apparently universities gain more by business depression and enrollment is greater."

WASHINGTON MAN EXPLORES WILDS OF CHINA, BURMA

SEATTLE, Wash.—To travel for three months through mountains infested with savages and bandits, over almost impassable roads, on unnavigable rivers, in a section of a distant foreign land practically unknown to white men and then suddenly to come upon an American, a graduate of your own university, is a great sensation, travelers say.

Especially if the American has a wife who can cook all the dishes you've dreamed about, and an honest to goodness tin bathtub.

Such was the experience of Harold Fleishhauer of Seattle. Fleishhauer was on a trip around the world in search of adventure when he met two American college graduates in Rangoon, Burma, and decided to risk a trip into the interior of Asia.

Mrs. WILCOX IS VISITOR. Mrs. Rouse B. Wilcox, now of Kansas City, Mo., visited Lincoln and the campus Monday. Professor Wilcox was formerly a member of the faculty of the English department.

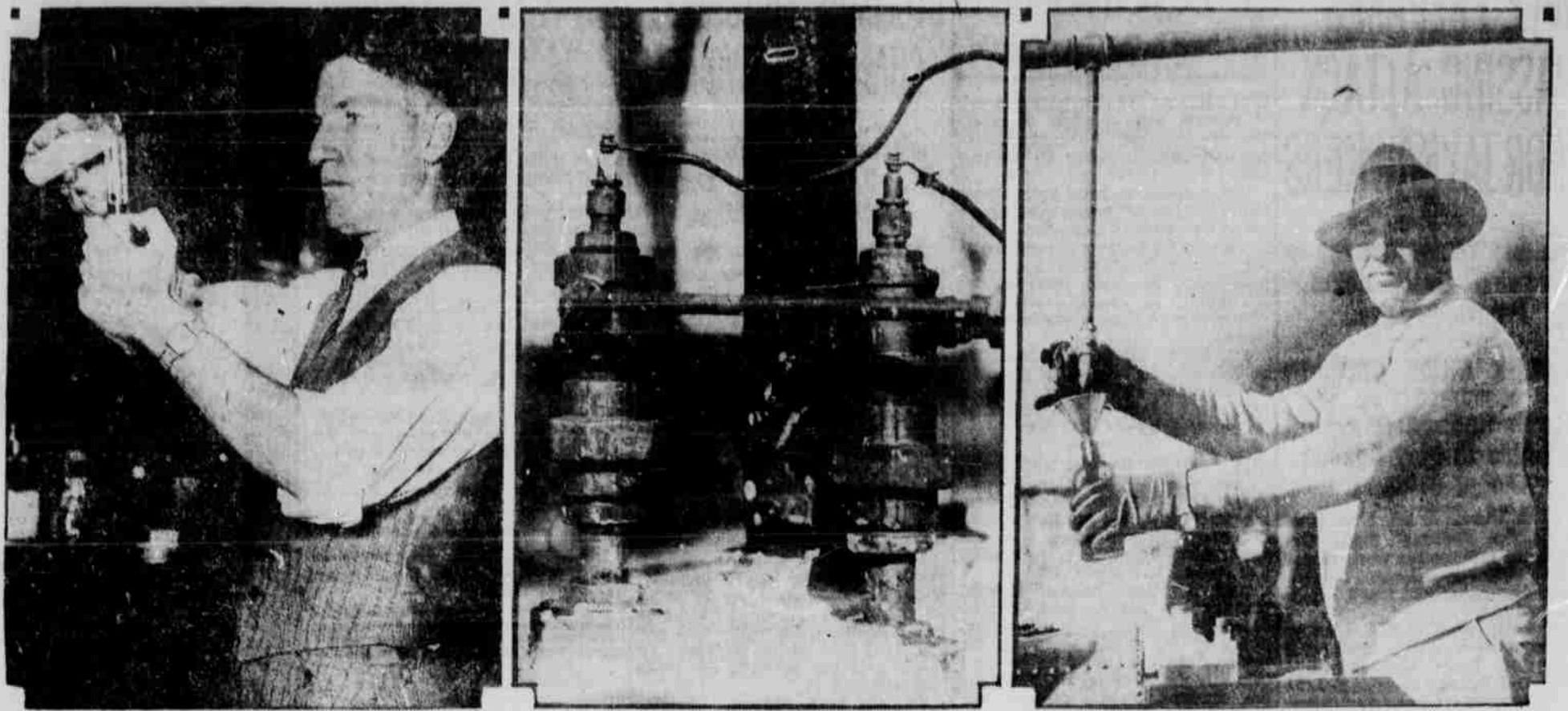
Maybe Grandpa Will Marry. First Office Boy—Don't you ever have a day off for your grandmother's funeral?

Second Office Boy—What! And me working for the registrar of births and deaths! — Inverness Courier.

A Texas university professor of architecture sees a future for the women architects.

well! going to the cornhusker so are we tasty pastry shop hotel cornhusker

UNIVERSITY PROFESSOR DISCOVERS NEW METHOD OF TREATING RAW PRODUCT



C. J. Frankforter, university professor, is shown inspecting his new process for extracting sulphur from crude oil and gasoline. The new system of extracting the sulphur is pictured in the center. Electric current passes through the spark plugs on top of the retort and heats the wires and hydrogen gas.

OREGON PROFS FIND BONES OF MAMMOTH

Skeleton Unearthed in Wet Clay By Willamette University Men.

CORVALLIS, Ore.—The bones of a mammoth were recently unearthed five miles from Lebanon by seventeen professors and geology students from Willamette university.

The wet clay in which the body lay had so sealed it that remains of organic material were discovered with the skeleton. One tusk of the mammoth had been broken off during its life time and was worn and polished at the broken end. It measures between two and three feet in length, with a base diameter of six inches.

Seven Foot Tusks. The other tusk which measured seven feet in length, was in such a state of decay that it could not be removed intact from the wet clay. Other bones of the animal were found scattered about in the earth, rather than in their normal order. From this it is conjectured that the mammoth had come to drink from a spring and had been attacked and devoured by other beasts.

The animal discovered is believed by Herman Clark, professor of geology and the leader of the party, to be a late member of its species, though its exact classification has not been determined. He declares it is an extraordinary specimen and may require inspection by government scientists at Washington, D. C., for identification.

Red Headed Puppet First Family to Appear at Museum

Miss Marjorie Shanafelt, director of visual education at the university museum, announces the completion of the manufacture of Wilfred. The young fellow is a puppet, measures eighteen inches in height, has red hair, and gigantic hands and feet.

Wilfred is the first representative of a puppet family soon to play for children in the museum. His role will be to announce the programs and furnish anecdotes incidental to the performances of his kindred-to-be. The whole family is expected to be in a position to begin rehearsals early in January. They play every afternoon for a week, at two different times during the season.

The museum staff expresses great admiration for what they call the "fine, unstudied attitudes" of Sir Wilfred.

Heigh-Ho, Ho-Hum. Kind Lady: There's the woodpile. Hobo Hank: Sorry, madam, I'm not a woodchopper. I'm just a tramp, a vagabond. Kind Lady: Oh, in that case, here's a quarter. Let's hear you croon.—Exchange.

It's Next Best. Diner (sadly)—Waiter, there's no fly in this soup. Waiter—Of course not, sir. Diner (mournfully)—Will you please take it back and have the cook put in a fly? I'm on my vacation and I can't afford a camping trip.—Brooklyn Eagle.

Scientists have declared spinach does not contain iron.

Advertisement for Rector's Pharmacy featuring 'Today's Special' with items like Baked Ham, Turkey, Fruit Jelly, and Any 5c Drink for 30c. Located at 13 & P St.

C. J. Frankforter Invents Process To Extract Sulphur From Crude Oil

Col. C. J. Frankforter of the University of Nebraska has discovered a new process for extracting sulphur from crude oil and gasoline and thus improving their quality. His discovery has attracted the attention of the oil industry and is expected to materially reduce the cost of "sweetening" crude oil.

Colonel Frankforter is professor of chemistry at the university and has patented every step in the new process. The Frankforter Oil Process company, Inc., with headquarters in Omaha and made up of Lincoln and Omaha men, has been organized to market the new process.

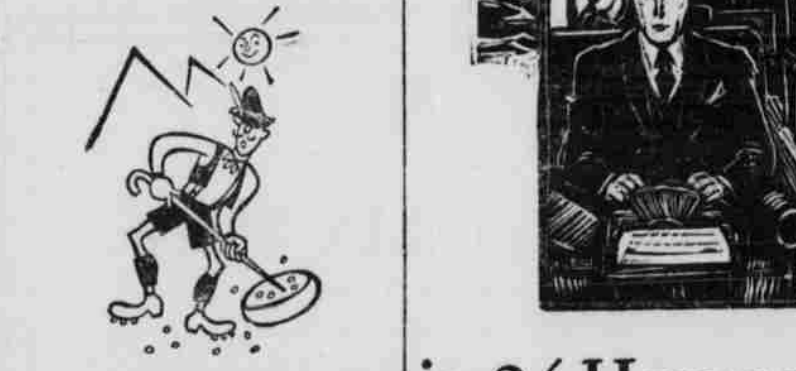
H. J. Ginsberg, of Lincoln and company; Colonel Frankforter and A. S. Sandilovich of Lincoln are vice presidents and C. C. Kattlemann of Omaha is secretary and treasurer. Nearly four years ago Mr. Ginsberg interested Colonel Frankforter in the search for a cheaper and better method of extracting sulphur from oil. Since then they have tolled over retorts. They knew hydrogen, properly introduced into crude oil, would quite with sulphur to form hydrogen sulphide, which can easily be removed from the oil.

UTAH FRESHMEN DO NOT WEAR GREEN LIDS

First Year Men Violate Old Custom By Appearing Without Caps.

SALT LAKE CITY, Utah—At last the old theory that there is an exception to every rule received a serious jolt on the University of Utah campus, when twenty-four seniors reported the following story: "We were stationed at different points on the campus for the mere purpose of checking up on how many freshman students were wearing the official "frosh" headgear. After five days of fruitless results we gave up hope, as not one first year student could be detected with a frosh lid." So

THIS CHEESE BUSINESS



A mighty industry, sprung from roots imbedded in the goat-ridden Alpine slopes of Switzerland; cheese has cast an odoriferous influence over our entire society. We find men punching holes in everything—the advent of the loom-leaf soft collar, they started on it, not avoiding thumbs and Adam's apples. Swank drew the line (there really had to be a line drawn). Swank looks like a pin, but isn't. You slip it on and slip it off. Nothing to stick, stab or stifle. Collar trim and neat. Gold-filled or solid gold. Plain, fancy and sport designs in various lengths. Jewelers' or men's shops. 50 cents to \$10.

Advertisement for Swank cheese, featuring the slogan 'LOOKS LIKE A PIN—BUT ISN'T!' and listing various styles and prices.

Advertisement for the Lincoln Symphony Orchestra, featuring Sunday afternoon concerts on Nov. 30, Jan. 11, Feb. 22, and April 5. Special season tickets for university students are \$2.50.

PREMEDS HAVE BANQUET

Pre-Medic students will have a banquet tonight at the Grand hotel at 6 o'clock. All pre-med students are invited. Dr. Elmer Anderson of Lincoln will be the principal speaker of the evening.

Advertisement for Rudge & Guenzel Co.'s 'On to Lawrence' Contest. Includes a table showing the standing of fraternities and sororities on Monday, November 3, 1930.

Advertisement for Rudge & Guenzel Co. with the slogan 'ONLY ONE MORE SELLING DAY! WHO GOES TO LAWRENCE?' and the company name.



2 World Conferences in 24 Hours with the Baltic Sea Between

The great World Power Conference at Berlin had just concluded. Leading power men of the United States impatiently awaited its news. But, another important International Electro-technical Congress was to open the next day at Copenhagen.

The editor of Power had to cover both events... but his readers mustn't lose out. Boarding a huge Lufthansa Monoplane, he typed out the story of the Berlin Conference while soaring 5,000 feet above the Baltic Sea. That same evening at Copenhagen, he shot the news via cable to his waiting publication.

Advertisement for McGraw-Hill Publications, listing various journals and books available, such as The Business Week, Radio Retailing, and others.