

On The Campus

BY MAILEY NICHOLS, CAMPUS EDITOR

Novelty Parties Feature Week's Activities.

Everything from formals to bowery costumes are in order for the various parties given by the members of Greek letter organizations this week end.

BOWERY PARTY AT S. A. E. HOUSE.

Members of Sigma Alpha Epsilon will entertain at a bowery party at the chapter house on Saturday evening.

THETA CHI PLEDGES ENTERTAIN.

Pledges of the fraternity will entertain active members of Theta Chi and guests at a sports party at the chapter house Saturday evening.

The Methodist student council will entertain Methodist university students at Trinity Methodist church Friday evening from 8 to 11 o'clock.

MECHANICAL ENGINEERING DEPARTMENT SERVES AS STATE TESTING LABORATORY

Public service to the state departments, municipalities, and the industries of the state are some of the services rendered by the department of mechanical engineering of the University of Nebraska.

The fuels and lubricants laboratory is making almost daily contact with fuel concerns, city councils, school boards, state departments and individuals in testing and furnishing information regarding the heating value, physical properties, selection and purchase, the storage and efficient combustion of liquid and solid fuels.

The pattern making division

which will be decorated with crepe paper and lighted with candles in true cabaret style.

KAPPA PSI GIVES FORMAL.

Members of Kappa Psi will entertain at a formal party at the Lincoln ballroom Friday evening.

LAMBDA CHI ALPHA GIVES PARTY.

A French cabaret will be the scene of the dinner dance given by Lambda Chi Alpha fraternity at the chapter house Saturday evening.

which will be decorated with crepe paper and lighted with candles in true cabaret style.

FRAT HAS HOUSE PARTY.

"Surprise" costumes will feature the house party given by Alpha Chi Sigma Saturday evening.

FIREMAN'S BALL AT ALPHA THET HOUSE.

Celebrating the renovation of serious fire, the members of Alpha Theta Chi will entertain at a fireman's ball on Friday evening.

Snyder Witnesses Twenty-Five Year Growth of North Platte Substation

Twenty-five years ago, March 4, 1904, the University of Nebraska North Platte experiment substation was opened for operation with W. P. Snyder as superintendent.



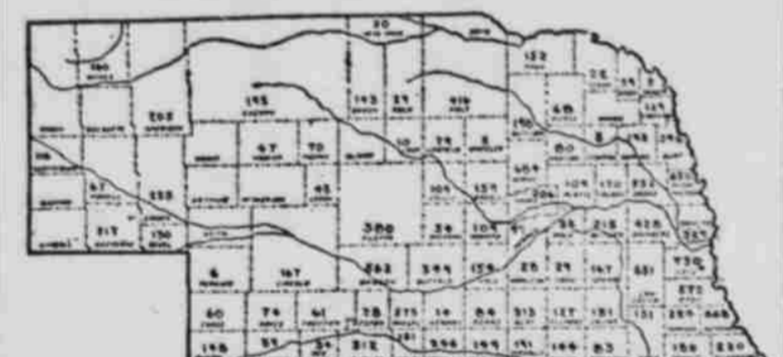
SUPR. W. P. SNYDER

Established by the legislature of 1903, the North Platte substation was the first of several substations to be established by the legislature.

Superintendent Snyder, now serving in his twenty-fifth year at the substation, received his first degree from the University of Nebraska in 1901.

Other experiment substations, which are all operated under the control of the director of the agricultural experiment station are those at Scottsbluff and Valentine.

Counties Vie for Honors in Census Of Patients Taken by Omaha School



This map shows the number of days patients of meager means from the various counties of Nebraska were cared for at the University of Nebraska medical college hospital at Omaha during the past fiscal year.

that each of the 3,000 patients spent on the average about four ten days in the hospital.

During the year 1,000 minor surgical operations and 500 major operations were performed, while 43,000 visits were made by the doctors to patients in the hospital.

More than 5,000 patients were cared for at the dispensary or out patient department. This is where those who are able to come for office examination and treatment are cared for.

Because of its more spectacular nature and because of its close association with the people of the state, the work of the hospital and the outpatient department of the college of medicine receives the most attention.

Forty-three thousand hospital days represents the grand total of service afforded the poor of the state during the past fiscal year, which means in ordinary language

active work in business—advertising, journalism, and all types of promotion," replied Miss Crone.

"Many of them go in for merchandising. In the last few years, too, business has demanded home economics, and the middlewest gives very good training in this profession."

Thorndyke Deland, expert in executive placement in the retail stores told Mrs. Lindley: "You can't go to the middle-west without running into the 'booster' spirit. They have their civic clubs, their Rotary clubs, if you please, and the whole community catches this enthusiasm.

"The middle western girls who come to New York bring it right with them to their jobs. And it's good stuff!"

THE UNIVERSITY PLAYERS

"The Queen's Husband" (BY ROBERT SHERWOOD)

Ray Ramsay as "ONLY THE KING"

TEMPLE THEATER Jan. 17 to 23, 7:30 P. M. Matinee Saturday—2:30 P. M. Tickets at Ross P. Curtice

D-A-N-C-E

TO WONDERFUL MUSIC ON A FLOOR SMOOTH AS A COLLEGE BEARD

RED KRAUSE AND THE VARSITY VIKINGS

8:30 Lindell Party House 8:30

Morrill Hall Provides Ample Space For State's Outstanding Works of Art

With new and more adequate quarters in Morrill hall, the school of fine arts of the University of Nebraska is embarking upon a larger program of service to the community and state.



Paul H. Grummam.

In this connection the Beckwith collection of copies of famous masterpieces, the collection of casts and the paintings of the Nebraska Art association form a permanent nucleus, supplemented by traveling exhibitions displayed in the two galleries.

The dramatic division of the school touches the state in many ways. It presents the University Players in a whole series of plays both at the university and in the state.

Probably the largest field of usefulness may be claimed by the division of music. Full opportunity is given to the students to pursue all forms of this art under competent and efficient guidance.

SOCIAL CALENDAR

- Friday, January 17. Kappa Psi formal, Lincoln hotel Alpha Theta Chi house party. Pi Kappa Alpha dinner, chapter house. Delta Delta Delta dinner dance, house. Ag. College mixer, Student Activities building. Methodist Student Council party, Trinity church. Lutheran club meeting, Temple theater. Saturday, January 18. Alpha Chi Sigma house party. Alpha Phi formal, Lincoln hotel. Alpha Sigma Phi tea dance, house. Lambda Chi Alpha dinner dance, house. Phi Mu house party. Chi Omega formal dinner dance, house. Sigma Alpha Epsilon house party. Zeta Tau Alpha formal, Cornhusket hotel. Theta Chi house party. Y.W.C.A.-Y.M.C.A. party, Ellen Smith hall.

AT LAST A REASON.

Drexel Triangle: Jealousy—how often have you noticed that a jealous person is always the one in need? They are jealous, tho not because of this lack, but due to their own lack of spirit that, when properly exerted in another, brings that which causes jealousy.

The successful person is helped to an even higher plane, due to the unjust criticism made by those desiring to see his downfall. It is an established fact that the man who sets the pace and causes the world to marvel has to contend with the resistance of those envious of his progress.

These attacks are merely signs of success, and while the one is conquered thru his own greed, the other goes on to newer heights and greater success. That which is good and great can and will stand no matter how unjust and cruel the clamor of denial.

NOW IS THE TIME.

Polk, Neb., Progress: How much can happen in a day! A letter, a telegram, a telephone call, an-announcing death or other catastrophe, can tear us from our path and send us spinning down a new byway.

A sharp word, a frown, or the utterance of an unsuspected thought, upsets our fortunes, our hopes and our ideals. A moment ago we were rich in our emotions of happiness and love; now we are sunk to the blackest pits of despair.

If we have kindly thoughts to express, now is the time to express them. If we have energy for achievement, now is the time to release it. If we have worthy emotions involving others, now is the time to liberate them. Let us live worthily now. In five minutes the tide of affairs may be moving us in another direction.

TUCKER-SHEAN

Purveyors to Discriminating Cornhuskers For Over Thirty Years

STUDENTS SUPPLIES STATIONERS JEWELERS OPTICIANS

Manufacturers of Fraternity Rings and Pins, Athletic Trophies and Medals.

1123 "O" St.

IF IT'S FOR THE STUDENT WE HAVE IT.

- Wanted -

Sorority and Fraternity House Representatives FOR

- Alpha Chi Sigma Delta Chi Delta Sigma Phi Delta Theta Phi Kappa Psi Pi Kappa Alpha Pi Kappa Phi Sig-Eps Theta Chi Alpha Xi Delta Delta Delta Delta Gamma Phi Beta Kappa Delta Phi Mu Phi Omega Pi Sigma Kappa Theta Phi Alpha Zeta Tau Alpha

An Attractive Proposition to Offer.

Fashion Cleaners Inc.

B1800

1820 "P"

COLLEGIENNE FROCKS

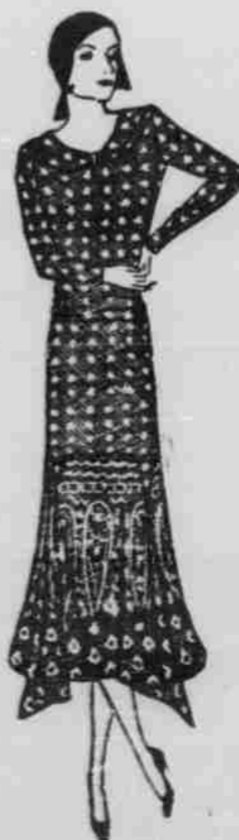
that are dated... Spring 1930

17.50 and 25.00

NEW ARRIVALS with the advance notes of the new season. Light toned, canton crepes and new patterned prints. Natural waistlines, peplum effects, boleros and scarfs that simulate capes. Skirts with flowing lines and sleeves with a rare feeling for individuality.

Sizes 11, 13, 15 and 17

Misses Shop—Second Floor.



Miller & Paine

Everybody's Seeing the Laugh Riot of the Year! "THE KIBITZER" with Harry Green—Mary Brian Neil Hamilton

STUART Shows 1 to 5, 7 to 11. Mat. 40c. Eve. 60c. Loge 75c.

The Stars of "BROADWAY MELODY" in a colorful Talkie

Bessie Love Charles King in "Chasing Rainbows" with Technicolor

ORPHEUM Shows 1-3-5-7-9. Mat. 35c. Eve. 50c. Chl. 10c.

Ramon Novarro in Devil-May-Care

LINCOLN Shows 1-3-5-7-9. Mat. 35c. Eve. 50c. Chl. 10c.

RIALTO THIS WEEK Warner Bros. Present

Ted Lewis in "Is Everybody Happy?"

COLONIAL The "Queen of Melodrama" In Her First Starring Role

Evelyn Brent in "DARKENED ROOMS"

THE UNIVERSITY PLAYERS "The Queen's Husband"

D-A-N-C-E TO WONDERFUL MUSIC ON A FLOOR SMOOTH AS A COLLEGE BEARD

RED KRAUSE AND THE VARSITY VIKINGS 8:30 Lindell Party House 8:30

Organized Union Orchestras Are Best and Most Reliable

THE UNIVERSITY PLAYERS "The Queen's Husband" Ray Ramsay as "ONLY THE KING"

Miller & Paine COLLEGIENNE FROCKS that are dated... Spring 1930 17.50 and 25.00