

WOMEN'S BASKET PRACTICES SET FOR THIS WEEK

Times for Workouts Will Be Assigned Weekly At Main Office.

TOURNEY STARTS FEB. 3

Women's intramural basketball practices are to start today and continue through Feb. 3. Practices will be assigned weekly by the intramural office. A round robin elimination tournament will be played for two weeks, from Feb. 3 to Feb. 17. Immediately following a top tier tournament will compete for class championship, closing March 7.

Practices will be scheduled in the large gym floor in the Armory, in the First Christian church at Sixteenth and K streets, at Bancroft school, and at the city Y. W. C. A. If a group is unable to practice at the times scheduled, they are asked to notify the intramural office. The coach of each group will be held responsible for checking out basketballs from Clarice McDonald, faculty adviser at the intramural office before the practice.

Extra practices after dinner may be arranged with Miss McDonald. The groups have been scheduled to play practice games as follows:

- Tuesday, Jan. 7.**
- Bancroft school, Nergettes v. Dormitory A.
 - First Christian church, Phi Mu v. Sigma Kappa.
 - Women's gymnasium, Delta Sigma team one v. team two.
- Wednesday, Jan. 8.**
- Bancroft school, Sigma Delta Tau v. Phi Omega Pi.
 - First Christian church, Sigma Chi team one v. team two.
 - Women's gymnasium, Gamma Phi Beta team one v. team two.
- Thursday, Jan. 8.**
- Bancroft school, Alpha Delta Theta v. Independent group.
- Friday, Jan. 10.**
- Bancroft school, Alpha Delta Phi Chi Omega.
 - Women's gymnasium, Alpha Xi Delta team one v. team two.
- Saturday, Jan. 11.**
- Women's gymnasium, Kappa Al-

Phi Theta team one v. team two.
Y. W. C. A. Alpha Pi team one v. team two.

11 o'clock:
Women's gymnasium, Phi Beta Phi team one v. team two.
Women's gymnasium, Kappa Phi team one v. team two.

AGRICULTURE GROUPS OPEN BIG CONFERENCE

(Continued from Page 1.)

"Farm Plucks," George R. Brown, "Woods That Show Will Kill," Dr. F. D. Kain, agricultural college, "Grinding Feed for Sheep," A. D. Weber, agricultural college.

NEBRASKA CROP GROWERS' ASSOCIATION.
Third Floor Dairy Building, 9:30. President's address, Wayland Magee, Bennington.

"In Which Nebraska Do You Farm," Harold Hodges.

"New Developments in the Farming Game," Dr. E. Willard, Fargo, N. D. Discussion, led by E. B. Lewis, Lincoln, and Leroy Rhodes, Osceola.

NEBRASKA HORTICULTURAL SOCIETY.
Room 106, Plant Industry Building, 9:30. "New and Promising Ornamental Shrubs and Trees," Charles Andrews, Arlington.

"Superior Fruits for the Garden," Alfred H. Hottes, Des Moines.

"A Successful Yard and Garden Contest," N. E. Gardner, Sioux City.

"My Experience With Potatoes," Jaculo Ross, Bennington.

NEBRASKA HONEY PRODUCERS' ASSOCIATION.
Second Floor, Plant Industry Building, 9:30. President's address, by W. B. Bunker, Minden.

"What Shall Our Policy Be?" Don Whelan, Lincoln.

"Honey Production Costs," J. G. Jessup, Council Bluffs.

NEBRASKA POULTRY IMPROVEMENT ASSOCIATION.
Second Floor, Animal Pathology Building, 9:30. "Should We Buy or Hatch Chicks?" C. W. Wipperfurth.

"When Do We Want Our Chicks?" A. E. Ealey.

"Factors in Fertility and Hatching," F. P. Mansfield, agricultural college.

HOME ECONOMICS ASSOCIATION.
Student Activities Building, 9:30. President's address, Mrs. R. F. Davis, Syracuse.

"Inheritance," Dr. D. D. Whitney, University of Nebraska.

"Round tables in Home Economics building," 10:45.

"Pictures in the Home," Miss Rosa Steen, University of Nebraska.

"Studies in Home Economics," Mrs. Edna Snyder, University of Nebraska.

"Next steps in Extension," Miss Mary Ellen Brown, agricultural college.

"Domestic Habits of Young Children," Miss Ruth Staples, agricultural college.

AFTERNOON.
GENERAL SESSION.
Student Activities Building, 3 p. m. Address by J. S. Stone, vice chairman federal farm board.

NEBRASKA FARM BUREAU FEDERATION.
Third Floor Agricultural Building, 1 p. m. Report of committee.
Adoption of 1930 program.
Election of officers.

NEBRASKA IMPROVED LIVESTOCK BREEDERS.
Judging Pavilion at 11:15.

"The Shepherd's Worst Enemy," J. C. Mayor, Central City.

"Feed Lot Losses," Dr. J. E. Newsum, Fort Collins, Colo.

NEBRASKA HORTICULTURAL SOCIETY.
Room 106, Plant Industry Building, 1 p. m. "Planting the Small Lot" (illustrated), N. F. Guernsey, Sioux City.

"Plants for Pools and Rock Gardens," Alfred P. Hottes, Des Moines.

NEBRASKA HONEY PRODUCERS.
Second Floor, Plant Industry Building, 1 p. m.

"Our State Fair Exhibits," W. R. Perry, Omaha.

"Preparing an Exhibit," R. L. Parker, Manhattan, Kan.

"You Can If You Will," Robert Wastrom, Omaha.

Moving pictures of bees.

NEBRASKA POULTRY IMPROVEMENT ASSOCIATION.
Second Floor Animal Pathology Building, 1 p. m.

"What is a Good Breeding Flock?" Eric Smiley, Newark.

"Relationships of the Chick Producer and Buyer," J. S. Brown.

HOME ECONOMICS ASSOCIATION.
Student Activities Building, 1:30.

4-H club team demonstration. "Shoes for the School Girl," Mildred and Helen Myers, Carter county.

"Farm Home Standards," Miss Mary Rokahr, Washington, D. C.

COED BOWLERS BEGIN TOURNEY THIS WEEK

Games Start Today and Finals Will Be Held Before Jan. 25.

Women's intramural bowling tournament will start today, and the finals are to be played by Jan. 25. The games will be played at Lincoln bowling alleys. If the team members can not play at the time scheduled, Helen McCoy, bowling chairman, asks them to notify the intramural office one day before the game or forfeit.

The following teams have been scheduled to play this week:

- Tuesday, Jan. 7.**
4 to 5 O'clock.
- Alpha Omicron Pi, team one vs. Phi Mu.
 - Alpha Chi Omega, team one vs. Sigma Kappa, team one.
 - Delta Zeta, team two vs. Gamma Phi Beta, team one.
- 5 O'clock.**
Delta Gamma, team one vs. Delta Delta Delta, team one.
Delta Delta Delta, team two vs. Kappa Delta, team two.
Alpha Chi Omega, team two vs. Alpha Xi Delta, team two.
- Wednesday, Jan. 8.**
4 O'clock.
- Chi Omega, team one vs. Phi Omega Pi, team one.
 - Sigma Kappa, team two vs. Kappa Kappa Gamma.
 - Alpha Delta Theta, team one vs. Delta Gamma, team two.
 - Alpha Xi Delta, team one vs. Alpha Delta Pi, team two.

Sigma Eta Chi vs. Phi Omega Pi, team two.
Alpha Delta Theta, team two vs. Phi Beta Phi.

Thursday, Jan. 9.
4 O'clock.

- Independent vs. Kappa Delta, team one.
- Chi Omega, team two vs. Alpha Delta Pi, team one.
- Gamma Phi Beta, team two vs. Kappa Phi.

5 O'clock.
Delta Zeta, team one vs. Dormitory A.
- Alpha Omicron Pi vs. Sigma Kappa, team one.
- Phi Mu vs. Alpha Chi Omega, team one.

Friday, Jan. 10.
4 O'clock.

- Delta Zeta, team two vs. Delta Delta Delta, team one.
- Gamma Phi Beta, team one vs. Delta Gamma, team one.
- Delta Delta Delta, team two vs. Alpha Xi Delta, team two.

5 O'clock.
Kappa Delta, team two vs. Alpha Chi Omega, team two.
Chi Omega, team two vs. Kappa Kappa Gamma.
Phi Omega Pi, team one vs. Sigma Kappa, team two.

Good Haircuts
Make A COMMON LOOKING PERSON HANDSOME

This theory has been proven time after time. Massages clean the skin and add attraction. We are experts in all lines of barbering.

THE MOGUL
127 N. 12 B7830

CLASSIFIED WANT ADS.

AFTER ALL its a Townsend photograph you want.

OF COURSE your photograph from Hauck's studio will please.

LOVE—Small white card sent with. Don't miss U. Hall and Andrews. Call HIGHT, Newark.

LOVE—A large brown leather valise belonging to Doris Trout. Reward.

EAT
at
RECTOR'S
12th and P St.

SALEM'S
WE SPECIALIZE IN MALTED MILK AND LUNCHES
B7900 19th & O

COME ON OVER

While the students are away the carpenters will play and that's just what they have done. It was a lot of mess and dirt but the result was a newer and better Campus Shop, and that is what we wanted. Come on over and enjoy it. Anything's allowed but studying.

MEET "NELLIE"

Its a boy! Don't let the name fool you. And a real boy, too. A Nebraska man and a Kappa Sig, but don't hold that against him. Nellie is the head man of the show, and if you don't know him, you're missing something.

BELIEVE IT OR NOT

but spring is on its way. New spring suits have been received and we want you to—

Come in and Look 'em OVER

Magee's Campus Shop
Opposite The Campus

A GRAND ARRAY

Of snappy suit models together with a layout of hats, furnishings and shoes, that supply the wants of any college man.

LIBERTY MAT. & JAN. 29 NIGHT

SEATS NOW ON SALE AT THE BOX OFFICE



The "Incomparable" RIO RITA

"THE QUEEN OF ALL MUSICAL COMEDIES!"
—N. Y. TIMES

Night Orch. \$3.00. Boxes \$3.00. Bal. \$2.50-2.00-1.50. Gal. \$1.00
BARGAIN MATINEE: Orch. \$1.50. Bal. \$1.50-1.00. Gal. 50c
TELE. NO. 3005.

IN THE FLESH AND BLOOD, NOT A MOVING PICTURE!

MYSTERY! MYSTERY!
The **Bishop Murder Case**
WITH **BASIL RATHBONE** AS **PHILO VANCE**

"Burt" presents on the stage **Five High Flyers Bobby and King Johnnie Payne**
Symphony playing "Lustspiel" A. J. BABICH, Directing.

-Stuart-
MAT. 40c; EVE. 60c; LOGE 75c.
SHOWS—1, 3, 5, 7.

IN TECH-NICOLOR WARNER BROS.
SHOW OF SHOWS
77 Stars!
1,000 Beauties
All talking, Singing, Dancing

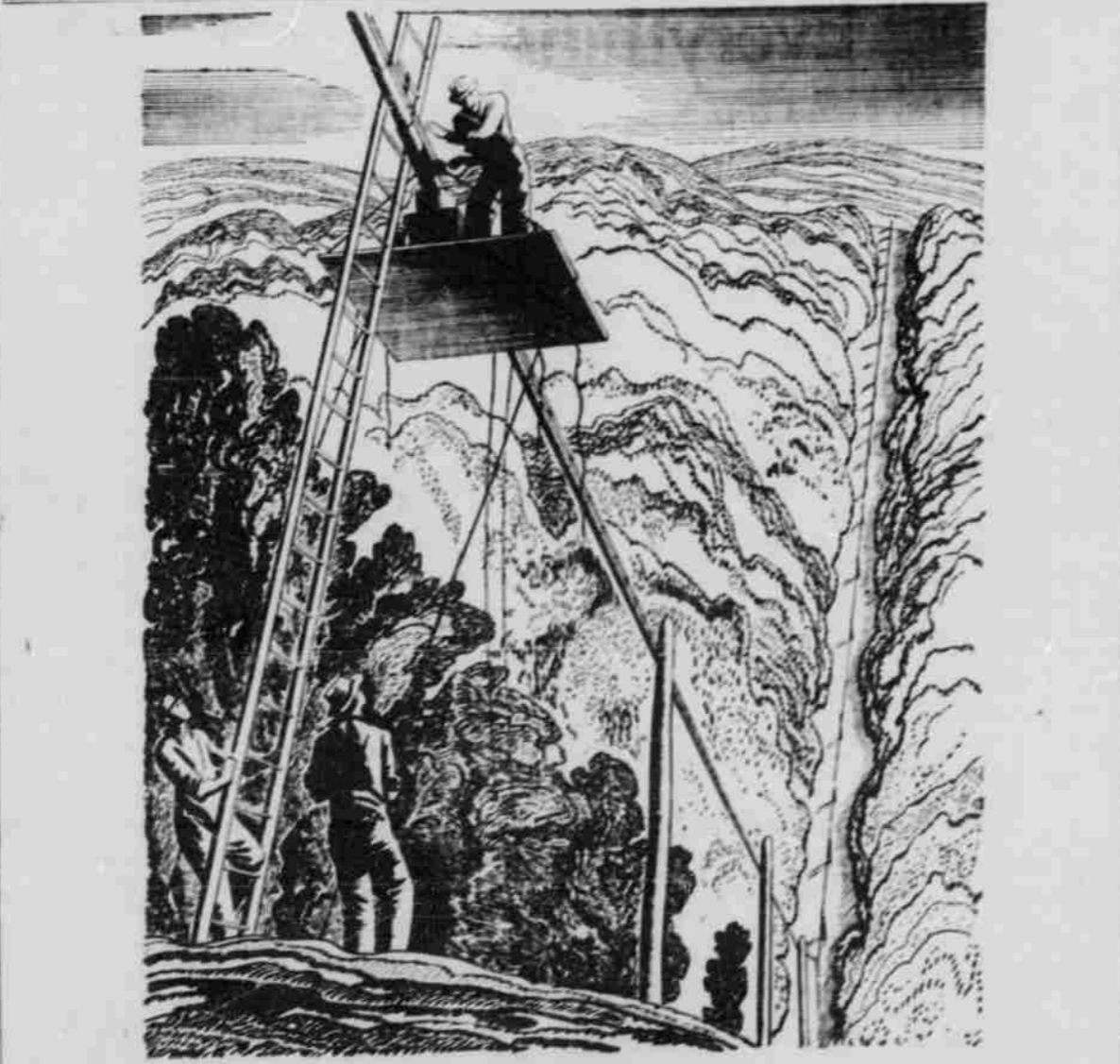
-LINCOLN-
Shows: 1, 3, 5, 7, 9, 11, 13, 15, 17, 19, 21, 23, 25, 27, 29, 31, 33, 35, 37, 39, 41, 43, 45, 47, 49, 51, 53, 55, 57, 59, 61, 63, 65, 67, 69, 71, 73, 75, 77, 79, 81, 83, 85, 87, 89, 91, 93, 95, 97, 99.
Mat. 40c; Eve. 60c; Children 25c.

The Star of "The Last of Mrs. Cheyney" in a poignant drama of heart's thrill.

THEIR OWN DESIRE
WITH **ROBERT MONTGOMERY LEWIS STONE BELLE BENNET**
Also Short Subjects

-Orpheum-
Shows: 1, 3, 5, 7, 9, 11, 13, 15, 17, 19, 21, 23, 25, 27, 29, 31, 33, 35, 37, 39, 41, 43, 45, 47, 49, 51, 53, 55, 57, 59, 61, 63, 65, 67, 69, 71, 73, 75, 77, 79, 81, 83, 85, 87, 89, 91, 93, 95, 97, 99.
Mat. 40c; Eve. 60c; Children 25c.

-Rialto-
GRETA GARBO
With Conrad Nagel
in **"THE KISS"**
A Metro-Goldwyn-Mayer Picture With sound
Mat. 25c-Nite 35c-Child. 10c
Shows 1-3-5-7-9.



Telephony knows no barriers

Telephone lines must cross natural barriers. This means construction methods must be flexible, readily varied to peculiar local conditions.

Special problems arise, too, in telephone laboratory, factory and central office. How to protect poles from insect attack? How to develop more compact equipment for use in manholes? How to assure a sufficient number of trained operators? How to build long distance business?

It takes resourcefulness to find the answers, to surmount the barriers. There is no stereotyped way.

BELL SYSTEM

A nation wide system of inter-connecting telephones



"OUR PIONEERING WORK HAS JUST BEGUN"



Thirty-five miles from the railroad the editor got his story

UP on the Gataineau River, with the mercury clear out of sight, a huge winter construction job was going forward! Here was a story the industry wanted to know... a McGraw-Hill editor covered it.

The railroad ended at Maniwaki; thirty-five miles north lay the job. His "paper" was going to press, so the editor mushed through thirty-five miles of snow-choked forestland.

Whether in the frozen north... in tropic areas laid bare by a hurricane... or in flooded regions where army trucks are the only form of transport; if there's a story that industry should know... McGraw-Hill editors get the facts first hand.

Industry and business look to McGraw-Hill Publications for news and guiding opinion because they know that these papers are edited from the field. For leaders of industry realize that they must keep contact with progress... or fall behind.

The college man, who now looks forward to the day when he too will enter business, can profitably spend an hour a week reading the publication which covers the field in which he is to work. From it he will learn what business and industry are thinking and doing today... before he leaves the campus.

Copies of every McGraw-Hill Publication are—or should be—in your college library.

Business men, industrialists and engineers—600,000 of them—regularly read the McGraw-Hill Publications. More than 3,000,000 use McGraw-Hill books and magazines in their business.

The Business Week System	American Machinist	E. & M. J. Metal and	Bus Transportation
Harvard Business Review	Product Engineering	Mineral Markets	Electric Railway Journal
Aviation	Food Industries	Engineering and Mining World	Engineering News-Record
Factory and Industrial Management	Textile World	Electrical World	Construction Methods
Power	Coal Age	Electrical Merchandising	Chemical & Metallurgical Engineering
Industrial Engineering	Engineering and Mining Journal	Electrical West	
		Radio Re-stating	

McGraw-Hill Publications
New York - Chicago - Philadelphia - Washington - Detroit - St. Louis - Cleveland - Los Angeles
San Francisco - Boston - Greenville - London