

1926 College of Agriculture Judging Teams

Geology Graduates Visit at University

Many graduates of the department of geology visited the department and the University Museum during the holidays. Among the visitors were: Clarence D. Buffet, '22, who is petroleum engineer for the Midwest Refining Co., Midwest, Wyo.; Dwight S. McVicker, '23, engineer and contractor for the O'Hagen-McReese, '26, who is now going to work for the Sinclair Oil and Gas Co. in Abilene, Texas; Wesley Gish, '22, chief geologist for the Sinclair Oil and Gas Co. of Tulsa, Oklahoma; Oscar E. Hans, '17, geologist for Merry Bros. and Perini of Mineral Wells, Texas; S. K. Clark, '16, assistant chief geologist for Marland Oil Co., Ponca City, Oklahoma; and Ralph Sturn, '18, consulting geologist at Laredo, Texas.

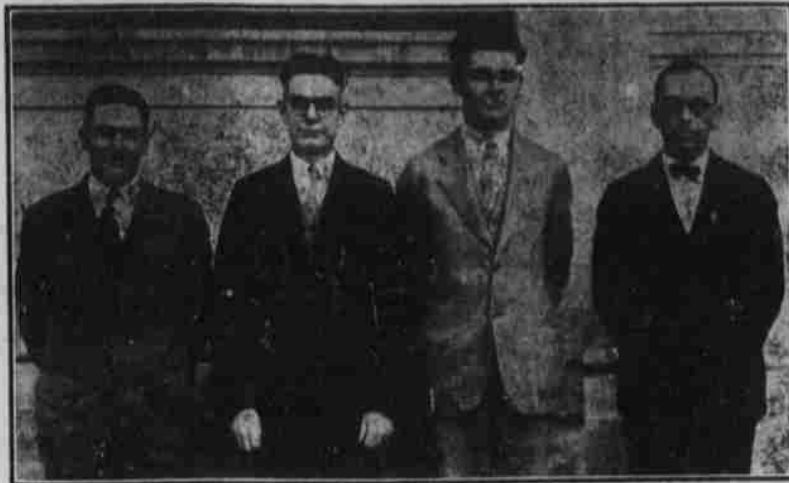
Best English Themes By Freshmen Chosen

Mary Jonas' "Consolation During Cold and Hot Weather," and Elvin Frolk's "I Am Going Back to the Farm" were judged the best of last month's freshman English themes by an article in the January issue of the Cornhusker Countryman.

Gertrude Clegg, Viola Jaso, Alice Loper, Margaret Hallstrom, Marvin Taylor, Harriet Burkey, Marion Rose and Erwin Hutchinson were given honorable mention.



The Meats Judging Team: (Left to right) Peter K. Pratt, Beaver Crossing; Russell Kendall, Lincoln; Donald B. Ray, Wayne; Frank Reese, Lincoln; and Professor W. J. Loeffel, Coach.



The Grain Judging Team: (Left to right) Herrold A. Millen, Republic, Kansas; Professor Thomas H. Gooding, Coach; Anton L. Frolk, Dewitt; and Leonard L. Wilson, Lincoln.



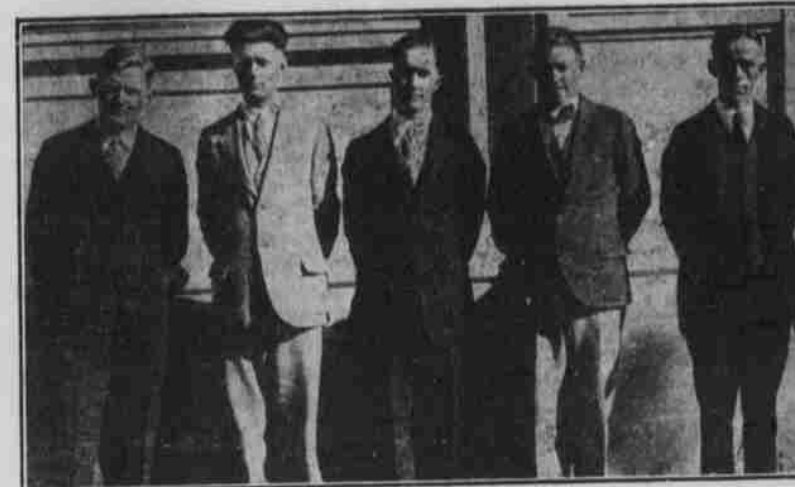
The Livestock Judging Team: (Upper row—left to right) Frank Reese, Lincoln; Donald B. Ray, Wayne; Ross H. Miller, Franklin. (Lower row—left to right) Ed R. Crowley, Cambridge; Professor W. W. Derrick, Coach; Irving S. McKinley, Ponca; and Clay M. Westcott, Malcolm.



The Swine Judging Team: (Left to right) Ross H. Miller, Franklin; Thomas Johnson, Lincoln; Lowell C. Waldo, Dewitt; Ed R. Crowley, Cambridge; Irving S. McKinley, Ponca; and Professor W. J. Loeffel, Coach.



The Poultry Judging Team: (Left to right) Anton K. Stipek, Wilber; Peter K. Pratt, Beaver Crossing; William L. Koenig, Lincoln; and Professor S. J. Maraden.



The Dairy Cattle Judging Team: (Left to right) William L. Koenig, Lincoln; Anton L. Frolk, Dewitt; Clarence C. Bartlett, Bird City, Kansas; Joseph R. Watson, Albion; and Professor Ray F. Morgan, Coach.



The Dairy Products Judging Team: (Left to right) Harold P. Frost, Plainview; Anton L. Frolk, Dewitt; Donald B. Ray, Wayne; and Professor P. A. Downs, Coach.

LYRIC

Tonight and All Week
Matinee Tues., Thurs., Sat.
THE PIERRE WATKINS PLAYERS
Present a Comedy of Modern American Life
"THE FAMILY UPSTAIRS"
By Harry Delf
Phone B4575 for Reservations
Eve. 75c and 50c—Mat. 50c and 25c

COLONIAL

The Paramount Picture That Opened the Paramount Theatre in New York City
MILTON SILLS
Men of Steel!
DORIS KENYON
with LOIS MORAN, JACK MULHALL, Lya De Putti, Wm. Collier, Jr.

ORPHEUM

A Splendid Program of Screen and Stage Entertainment
ON THE SCREEN
"SUMMER BACHELORS"
A Fascinating Picture All Will Be Talking About With MADGE BELLAMY
And An All-Star Cast
"A BLONDE'S REVENGE"
Continuous Laughter

POMPADOUR

ON THE STAGE
An Orpheum Circuit Feature
ALBERTINA RASCH
Presents
POMPADOUR
BALLET
A Modern Satire Featuring
NORREE
with EVELYN GROVES
As "Pompadour"
ALBERTINA RASCH
SOLO DANCERS
ANDY RICE, JR.
This is Vaudeville's
Greatest Dance Production
BEAVER and the BOYS
SHOWS AT—2:30, 7 P.
MATS. 35c—NITE 50c—CHILD. 10c

VALDEVILLE

WHERE EVERYBODY GOES
THURS.—FRI.—SAT.

GIBSON & PRICE

"A COMEDY NOVELTY"
With a Prologue
The Misses Evelyn Mason,
Harriet Bendis, Jean Morey, Jessie Clark, Zara Hale, Tute Mattie, Lillian Downey and Irene Rich

PRINCETON & YALE

"KELLY'S SINK"
By John F. Connor
Day & Aileen Revue
Presenting their Pretentious Revue
"THE DANCE CLUB"
A Riot of Color, Music and Girls
with RAE PARLOW and
The Eight Dancing Models

ERNEST HIATT

"NOTHING SERIOUS"
AMERICAS PREMIER
PIANO QUARTETTE
The Magic of Music
Priscilla Holbrook, Directress
Dorothy Dale, Soprano Solo
Florence Shevill, First Pianiste
All Musical Numbers Arranged By
Geraldine Valliere (Jerry)
PREMIER BABY GRAND PIANOS
USED EXCLUSIVELY
BABICH and the ORCHESTRA
SHOWS AT 2:30, 7:00, 9:00

All aboard for the Land of Romance!
MAE MURRAY
Valencia
A Metro-Goldwyn Picture
ON THE STAGE
HELENE SCHOLDER
America's Foremost 'Cellist
All Week

RIALTO THURS.—FRI.—SAT.
Carl Laemmle
Presents
THE COLLEGIANS
HERE'S sparkle!
Here's pop—thrills,
laughs—speed—
youth—love—jazz
—quality! Every-
thing you'd expect
in a series titled
"The Collegians"
with a lot thrown
in for a pleasant
surprise. The first
picture of real col-
lege life! Just pack-
ed to the over-flow-
ing with joyous en-
tertainment!

with **GEORGE LEWIS**
supported by
HAYDEN STEVENSON
Universal Jewel Series

—ALSO—
ZANE GREY'S "MAN OF THE FOREST"
WITH JACK HOLT
Opportunity Night Friday—\$17.50 in Prices

Speier's Clearance

Is An Unparalleled Buying Opportunity
For Everyone

MEN'S & YOUNG MEN'S

SUITS and OVERCOATS

Overcoats and Suits of finest grade materials, in beautiful patterns and colors, of the most recent styles. Hundreds of garments from which to make your selections. Every suit will retain its original price mark—indicating the season's selling price. Don't hesitate one minute—get your choice of the stock at once.



20% OFF

SUITS & OVERCOATS

Was \$20	NOW	16 ⁰⁰
Was \$25	NOW	18 ⁷⁵
Was \$30	NOW	24 ⁰⁰
Was \$35	NOW	28 ⁰⁰
Was \$40	NOW	32 ⁰⁰
Was \$45	NOW	36 ⁰⁰
Was \$50	NOW	40 ⁰⁰
Was \$60	NOW	48 ⁰⁰

20 Percent Off On
Men's Wool Trousers