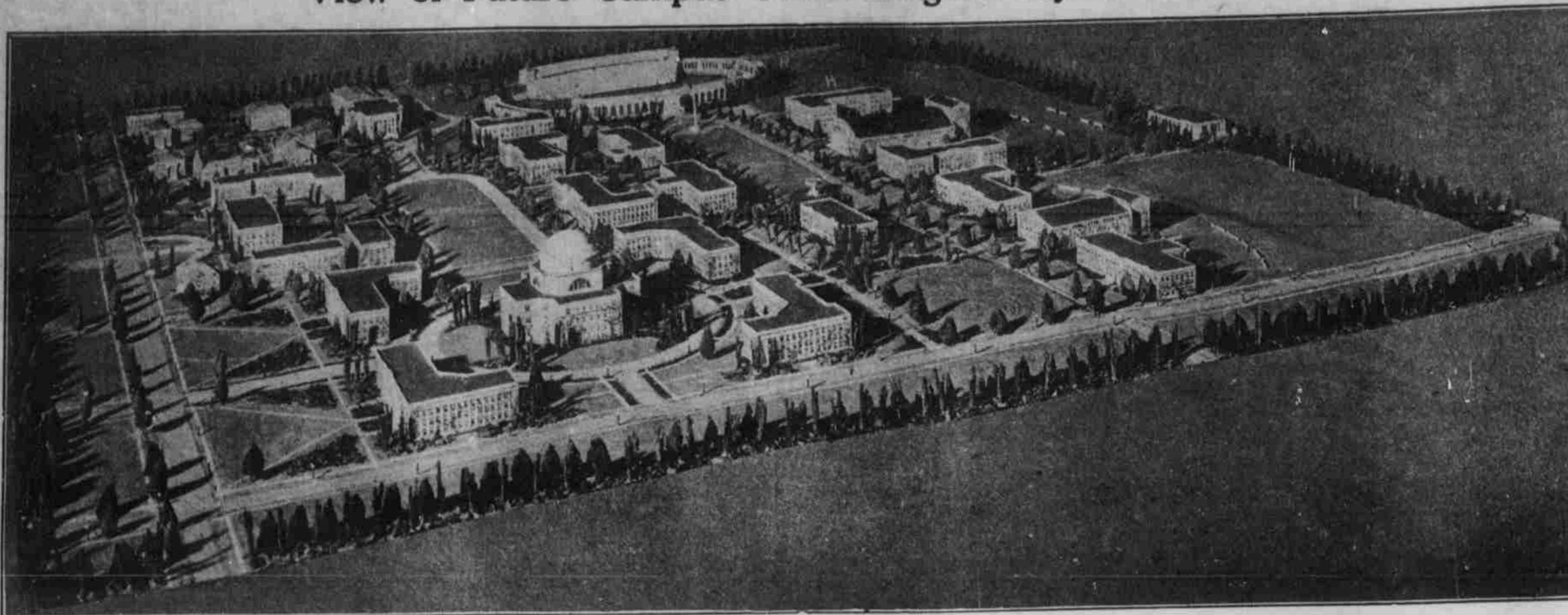


View of Future Campus Under Regent Seymour's Plan



A view of the miniature model of the future University of Nebraska campus, developed by the Campus Planning Committee of which George N. Seymour of Elgin, Nebr., is the chairman. The view is that which would be seen by an aviator flying over the southeast corner of the campus. The building in the circle, at the head of the vista extending toward the back, is the proposed new Library building. Under the plan, the Library will be placed at the head of Fifteenth Street, facing the State Capitol. To the extreme right, in the center of the row of trees forming the

boundary of the campus, may be seen the proposed heating and power plant. Just to the south or left of the north boundary may be seen the center of athletic activity, the proposed men's and women's gymnasiums, the new Coliseum, tennis courts, football fields, and baseball diamonds. Extending from the stadium toward the front of the picture, is the proposed Memorial Hall, from Twelfth to Fourteenth Streets. The building is the Bancroft school. To the east of that structure, is an open space which probably will be occupied by fraternity homes, as will the entire

west side of Sixteenth from S Street, north. To the left of the Stadium is the group of engineering buildings, with the quadrangle extending east to the Library. The street to the front of the picture is Sixteenth, and that to the left is R Street. Note the many beautiful vistas, and the apparent tying together of the various buildings. The model campus pictured here may be seen by any persons interested by inquiring at the office of the superintendent of operations, 205 Administration building.

GRIDSTERS TRY PASSING GAME

Coach Bearg Drills Men on Aerial Tactics Against Freshman Team

To rectify the mistakes the Huskers made Saturday was the main task for Coach Bearg's gridsters yesterday. Most of the scrimmage was spent with the squad alternating on the defensive and offensive end of the aerial game.

The team which used offensive aerial tactics against the freshman squad was composed of Weir and Sprague at ends, Stiner and Holm at tackles, Whitmore and Zuber at guards, James at center, Brown at quarter, Presnell and Voris at the halves, and Howell at fullback.

Good Combination
This combination showed up well at the passing game, making substantial gains on completed passes during the few minutes of scrimmage. Presnell made the only score of the brief tussle when he caught a short pass from Brown and slipped past the freshmen backs.

Next Saturday the Huskers play Washington University at St. Louis. That is another old score that needs settling, for the Pikers took a 20 to 7 victory over the Cornhuskers of 1918.

Future Husker Opponents Make A Good Showing

Five of the six future opponents of the Nebraska Cornhuskers displayed strength in games last Saturday while the Beargmen were being handed the luckless short end of a 14 to 7 score against the Missouri Tigers.

At Ames, Iowa State College went down to defeat before the strong Oklahoma Aggie team, 13 to 0. The Iowans were outweighed ten pounds to the man in both the line and the backfield, and were handicapped by injuries hanging over from the Montilt with Washington University at St. Louis.

Kansas Does Well
At Madison, the Kansas Jayhawkers surprised the Big Ten in general and Wisconsin in particular by hold-

ing the Badgers to a 13 to 0 score. The Wisconsin team is one of the leading contenders for the western conference title, and the ability of Kansas to hold them to a single touchdown and two field goals indicates a warm battle when the Huskers invade Lawrence October 23.

The Kansas Aggies, that forward passing aggregation from Manhattan, who will meet the Huskers at Lincoln, November 13, defeated the strong Creighton eleven 12 to 0 at Omaha. Coach Bachman has a heavy experienced team this year that will cause many a team a lot of worry.

Washington University at St. Louis, the team the Huskers meet this Saturday in the Missouri city, gave the Rolla School of Mines a lot to think about when they romped to a 25 to 2 victory.

The University of Washington (Seattle), Thanksgiving Day opponents of the Huskers, carried off a 23 to 9 victory over Oregon, considered one of the leading contenders for the Pacific Coast championship.

New York University, the eleven coached by "Chick" Meehan, who will meet the Huskers at Lincoln, November 20, trimmed the strong West Virginia Wesleyan team 24 to 7 at New York.

IN THE VALLEY

By . . .
OSCAR NORLING

Although the Huskers went down to defeat in the Tiger encounter they proved that they have developed a line. The pessimistic gloom which spread over the Cornhusker camp last week with the question, "What can a strong backfield do behind a weak line?" was dispelled when the linemen were seen in action against Missouri. Outweighed by a substantial margin, the Nebraska forwards fought the Tiger line to a stand-still.

The Huskers turned back attempts to plunge through their line, and opened holes in the Tiger wall that enabled the backfield men to gain 194 yards from scrimmage. This was nearly four times the amount made by the Missouri backfield through the Nebraska line. Not a single first down was made by Missouri through the line, while the Huskers made eight first downs through line plunges.

Up in the study room of one of the regular linemen, a Missouri sticker which was placed on the wall last week, now reads "Mizzou Next—Fall."

The Huskies, Nebraska's Turkey Day opponents, handed their neighbors, the University of Oregon, a 23 to 9 defeat last week. Most of the yardage was gained by plunges through the line. Cornhusker followers will remember that this was the line which made such an impressive showing in the Washington-Nebraska bout last season.

The 14 to 7 victory by Missouri was the first registered over the Cornhuskers by a Missouri Valley team in seven years on the local gridiron, the Iowa State eleven of 1919 turning the trick by a 3 to 0 score in 1919.

Oregon Dislikes Cars
University of Oregon authorities have appealed to parents to prohibit their sons and daughters from bringing cars to school on the grounds that automobiles are the cause of low scholarship and increase danger of moral delinquency.

WANT ADS

CANVASSERS WANTED—Those experienced, especially in dinnerware, preferred. College men or women wishing part time work given every consideration. Write, for personal interview, giving qualifications, experience, etc., to P. O. BOX 1644, Lincoln, Neb.

LOST—Shell rimmed glasses in black case at Temple cafeteria. Name Paul Pence. B6491.

Loan Library
A loan library established by an alumnus supplies the books on which there is no time limit. Last year 526 books were loaned, and the demand is expected to be much greater this year.

Open Till Midnight
Left Ham Sandwiches
Snappy Service
Appetizing Food
Moderate Prices
Fountain Service to Counter
Hotel Capital Sandwich Shop

Drive-It-Yourself
All New Fords & Crystals
We Deliver
Real Insurance
National Motor Car Co.
1918 O St. B2125

MOGUL
Barbers to Nebraska Men
127 No. 12th St.

HOT BISCUITS!

—made of real whole wheat, crisp and appetizing, nourishing and energizing—that's food for thought and exercise. For a good warm breakfast on a real cold morning try



SHREDDED WHEAT

HEATED and COVERED WITH HOT MILK or CREAM

Contains all the BRAN, PROTEINS, VITAMINS and other food elements that your body craves in balanced 100% digestible, really delicious form.

Only takes a minute to prepare. Salt or sugar to taste and then sink your teeth into crisp, chewy, luscious mouthfuls of Nature's finest food.



Make a daily habit of just two biscuits of Shredded Wheat and watch your health and energy curve, go up and stay up.

MAKE IT A DAILY HABIT

IT'S THE CUT OF YOUR CLOTHES THAT COUNTS



For College a New Style by **Society Brand**

You know the general lines—a loose coat, broad shouldered, with high lapels. This new model for Fall is a bit smarter, even, than earlier versions. It's the college man's own style, with exactly the right cut. Trust Society Brand for that! And the fabrics are the rugged, colorful kind you want for the campus. See them!

\$45 and up

Mayer Bros. Co.

Eli Shire Pres.

C. H. Ferris

Masquerade Shop

Over 1000 costumes to choose from
All kinds of make-up and masks

Room 6 1309 O St L4727

Select Gifts Now

A small payment will put away any gift.
We have just received a large shipment of American watches. Howard, Elgin, Waltham, and other makes.

Also a nice display of Bracelet and Strap watches

Fenton B. Fleming

Jeweler
1143 "O" St.