

Nebraska on the Gridiron During 1925 Season

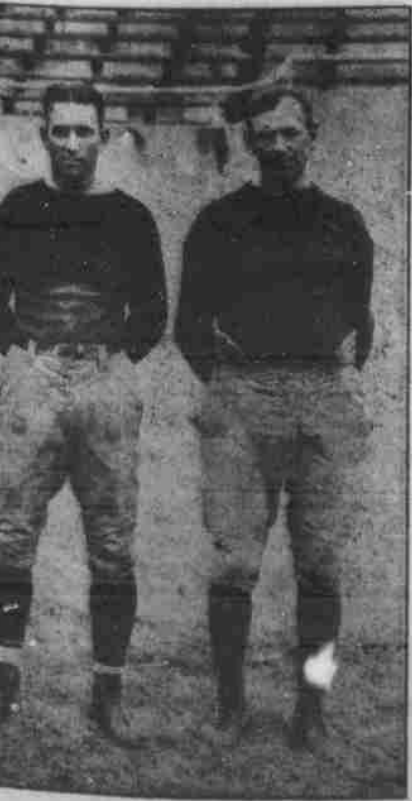


Kaska, Boyer, Locke, Dover, Gross, Elliott, DuTeau, Weir, Westoupal, Hutchison, Rogers, Kiffin, Molzen, Reller, Raish.

"Choppy" and every Nebraska conference followers, too—what you mean. He ends his football career today, and it is in which he has truly for Nebraska. His value is in his ability as a line plunger, when good are needed, the signal is for his there. He is recognized as a dangerous, and is marked in every. But that doesn't deter him purpose: to tear great wide the opposing line. Sport who pick "All" teams are wisely at Rhodes. "Choppy's" home is in Ansley, and member of Sigma Nu.

of the guards who did not recognition until late in the season. Bob Whitmore, of Scottsbluff, plays a scrappy game, and more years left in which to himself a name. He has a good record. He is a member of Alpha Sigma.

Coaching Staff



Leo Scherer, Owen Frank. Scherer is the center on the Nebraska football team. Owen Frank is a member of the coaching staff. He coached the Nebraska team in 1922, and has been coaching the team since that time. He is a backfield player. His coaching of the wing at position, any of which are able to hold their own. Technically, he is a backfield player. In this department it has been said that he



GLENN PRESNELL

Along about the middle of the season, when Nebraska played Kansas, a new star appeared in the Husker backfield. He was Glenn Presnell of DeWitt, and he plunged through the line along with "Choppy" Rhodes for most of Nebraska's gains. Presnell is a sophomore. His play has been hindered somewhat by injuries this season, but next year will undoubtedly prove that the DeWitt player is a valuable man. He belongs to Alpha Gamma Rho.



ROLAND LOCKE

Nebraska's fast halfback (in the superlative degree) is another of the men who are playing their last game today. His ability lies in end runs and open field running, and he can out run any opponent put up against him. The directions to Husker opponents have also included a caution against Roland Locke, and when he is in the game you can look for almost anything to happen. His home is at North Platte, and he is a member of Phi Gamma Delta.



ALONZO L. STINER

"Lonnie" Stiner will be in his element to tackle against Notre Dame today. He came to Nebraska from Lombard College and has already been up against the Irish. While this is his first year of Varsity competition, he is entitled to only one more year as a result of his play at Lombard. Stiner is an able running mate to Ed Weir. He breaks through the opposing line with the same effectiveness that Ed Weir does, and is a threat all the way around. His home is at Hastings, and he is a member of Sigma Nu.



HAROLD HUTCHISON

"Hutch" is bowing out of Husker football today. As a center, he has gained comment wherever the Huskers have played, and he is considered by many to be a candidate for signal "All-team" honors, either in the west or in the conference. Hutchison played center most of the season, but during the last week of practice he was shifted to guard and Westoupal was put in at center. That may be the order for the lineup against Notre Dame today. Whether at center or at guard, "Hutch" plays roving center on defense. Of this part of his work much has been said, as he is a marvel at forecasting what the opposing team will do. He lives in Lincoln and is a member of Phi Gamma Delta fraternity.



JOHN RHODES



ROY MANDERY

This is "Big" Mandery, brother of the halfback. He plays tackle on the Varsity squad, being moved to that position from end in 1924, and is counted on as one of the strongholds of the line. He has another year of football left and should show up next year. He lives at Tecumseh and is a member of Kappa Sigma fraternity.



ARNOLD OEHLRICH

Oehlrich, a sophomore, is a plunging fullback who bids fair to step into the shoes of "Choppy" Rhodes next year. He is playing his first year this season, and the season has seen a steady development in his play. He weighs 186 pounds, and has the drive which puts him through the holes in the opposing line. Oehlrich comes from Columbus and is a member of Sigma Phi Epsilon fraternity.



FRANK MIELENZ

Mielenz has been recognized as a speedy halfback late in the season, and is due to show some stuff next year. In 1924 he was kept out most of the season because of injuries, and this year he was used as a reserve back. He lives at Wahoo and is a member of Delta Tau Delta.



FRANK DAILEY

Dailey, from Alliance, has played regular halfback most of the season, and is second only to Locke when it comes to running the ends. Frank has won his spurs through sheer hard work, and during 1926 may be depended upon to flash some neat backfield work.

He flashed into prominence in the first game of the season, against Illinois, when he intercepted a pass and ran for a touchdown. His specialty is snagging opponent's passes. Dailey is a member of Alpha Tau Omega.



CECIL MOLZEN

Cecil is red-haired. He is a tackle. Add the two together and you get quite a combination, one which is a threat to Nebraska opponents. When Red gets into the game he adds 206 pounds to the total weight, and uses them very effectively. He has another year, and will surely develop into a reliable man next year. He was handicapped this year by an injury, and was able to be out only during the latter half of the schedule. His home is at Memphis, Nebr., and he is a member of the Kappa Sigma.



WILLIAM V. LAWSON

Lawson is an end man from Omaha where he won high school honors, and is a sophomore this year. Lawson is out for a position where there is plenty of competition, but as Shakespeare said "Time will tell." Fans believe that "Vint" will develop into a capable wingman. He is a close student of the game and plays for all he is worth whenever he gets into a game. He weighs 176 pounds and is a member of Delta Tau Delta.



RAY RANDELLS

One of the tackles who is doped to uphold the Nebraska reputation for driving linemen is Ray Randells of St. Anthony, Kan. Ray is only a sophomore this year and still has two more seasons in which to strut his stuff. He has weight (188 pounds of it) and comes from a football family. Both of his brothers were stars on the Kansas Aggie team, but Ray came to Nebraska to play football. He belongs to Pi Kappa Alpha.



FRANK POSPISIL

One of the guards on the Husker squad is Frank Pospisil of Wahoo. This is his second year on the squad and he shows possibilities. It is said of him that if he is told to play in a certain position, he does it, and never forgets it. That is a virtue. Frank was also on the sick list for a time this year, but he will be going strong in 1926. He is one of the gridmen who have the distinction of being an excellent student. He belongs to Phi Tau Epsilon fraternity.