

## RELAY TRYOUTS ARE RUN OFF

Slow Times Recorded Due to Handicap of Stiff Wind Across Stadium Field.

### FRESHMAN TELEGRAPHIC TRYOUTS ALSO RUN OFF

Handicapped by a stiff wind sweeping across the stadium field, most of the events in the Kansas relay tryouts, held Tuesday afternoon, were run off in rather slow time. Some of the events in the freshman telegraphic tryouts were held at the same time.

Avard Mandery won the 100-yard dash in 10:9 with Dailey only a step behind. Locke was suffering from a foot injury and did not compete.

Lewis won the half-mile in 2:04:5, and Houdersheldt placed second. Roberts, a freshman, ran the half mile in 2:03:4, which was better than the varsity time. Ross won the mile in 4:40, which was fair time against the wind. Locke tried the 440 and finished easily, jogging in at the finish after leading the field by twenty-five yards most of the way. Ed Weir and Beerle ran a close race in the 60-yard hurdles, with Weir winning on the sprint in 8:05.

Krimmelmeyer took the shot with 41 feet, 3 inches; Scott won in the discus with a throw of 121 feet and 4 inches; while Wostoupal placed first in the javelin throw by heaving it 172 feet and 8 inches.

Summary of both tryouts are as follows:

100-yard dash — Mandery, first; Dailey, second; Reese, third. Time 10:9.

100-yard dash (freshmen)—Dav-enport, first; Wyatt, second; Rich-ards, third. Time 10:8.

220-yard dash — Sherrick, first; Dailey, second; Mandery, third. Time 23:05.

220-yard dash (freshmen)—Dav-enport, first; Glasgow, second; Hen-dricks, third. Time 24:01.

440-yard dash—Locke, first; Beck-ord, second; Hein, third. Time 51:05.

Half mile—Lewis, first; Houdersheldt, second; Tappan, third. Time 2:04:5.

Half mile (freshmen)—Roberts, first; Johnson, second. Time 2:03:4.

1 mile—Ross, first; Hays, second; McCarthy, third. Time 4:40.

1 mile (freshmen)—Reller, first; Moore, second; Cronk, third. Time 4:53.

Javelin—Wostoupal, first; Almy, second; Popelar, third. Distance 172 feet, 8 inches.

60-yard hurdles—Ed Weir, first; Beerle, second. Time 8:05.

Shot put—Krimmelmeyer, first; Moizen, second. Distance 41 feet, 3 inches.

Discus—Scott, first; Pospisil, second; Durisch, third. Distance 121 feet, 4 inches.

Fifty juniors and seniors of the University of North Carolina were granted optional class attendance during the winter quarter as a reward for making a B average during the fall quarter.

The University of Pittsburgh has completed plans for the erection of a 52-story "Cathedral of Learning," to house virtually all the university activities. The structure will be 680 feet high.

"Outward Bound," by Sutton Vane, which is one of the most pleasant plays of recent years, has just been presented by the Comedy club of the University of Michigan.



She: And now, George, what did you learn to do at college?  
George: Blow smoke rings and wear Finchley Clothes.

**After Every Meal**

Wrigley's increases the flow of saliva and relieves that "stuffed" feeling. Cleans the throat, soothes nerves and sweetens the breath. Cleans teeth too.

**Wrigley's**

### Work Planned for Husker Backfield

Husker backfield football men will work out three nights a week, Monday, Wednesday, and Friday, for the remainder of the season. This practice has been going on since spring vacation, but men are just beginning to get out.

Punting, passing, charging, and running will be done by the squad under the direction of Coach Bearg. A few line men will be on the field in the stadium to assist in the work, but it is a little early for them to turn out. All men are being issued track suits, and no scrimmaging will take place.

### WILL BROADCAST KANSAS RELAYS

Thousands of Fans Will Be Able to Sit in on Third Annual Track Events.

LAWRENCE, Kas., April 15.—Thousands of track fans in some seventeen states will be able to sit in on the thrilling events of the third annual University of Kansas Relays on April 18, thanks to the radio. The Kansas games, the first major out-door track carnival of the middle west, will be held between the hours of 1:30 and 5 o'clock the afternoon of April 18 at the Memorial Stadium field of the University of Kansas. The entire program including fifteen relay races and nine special field and track events will be broadcast from KFKU, the university broadcasting station.

Fans desiring to hear the results of the races in which athletes from their school are competing will be able to do so by tuning in about 1:30 at 275 meters.

The Kansas Relays is an event that has drawn this year entries of more than a thousand athletes from more than a hundred universities, colleges, junior colleges, military academies and high schools of widely scattered parts of America. The schools represented extend from Minnesota on the north to Texas on the south and from Wisconsin to California and Oregon.

The K. U. broadcasting station also will broadcast the twenty-second annual K. U. interscholastic track meet on Friday, April 17, an event for Kansas high schools, which is held the day before the Kansas Relays. This earlier broadcasting will give radio and track fans opportunity to tune in and Friday and test out the sending so as to be all set to tune in again on Saturday, April 18, for the major events of the Kansas Relays.

Fans in nearby cities and towns will journey to Lawrence to be present in person for the Kansas games and advance requests for tickets forecast a record attendance this year.

### COURSE FOR SCOUT LEADERS PLANNED

Extension Division of University and Local Boy Scout Unit Work Together.

A short course for Boy Scout leaders is being offered under the joint auspices of the Extension Division of the University of Nebraska and the Lincoln Council of Boy Scouts. Seventy-eight men attended the first meeting in the Armory. Another meeting will be held in the Armory Saturday evening.

The course is offered especially for men who are interested in work with young boys. University students who are contemplating teaching as a profession are invited to attend the other meetings. The course gives an opportunity for those who like the work to study the methods under direction of those engaged in the work.

D. W. Hays is chairman of the committee in charge of the course. W. J. Kent is the Boy Scout executive. The other members of the committee are Don Stewart, O. J. Allison, W. P. Ross, and Dr. G. M. Byrne.

The course takes up the methods of putting the Scout program across. It consists largely of practical work offered by Boy Scout leaders. The various phases of scouting, signaling, first aid, and wood craft are taught as a game. University instructors will talk on map reading, astronomy, bird study and similar phases of Scout work.

### FINANCING CAMPUS ENTERPRISES

This student body has about reached the end of its long, long trail of depending on drives and campaigns, subscription and otherwise for voluntary contributions to raise money. This plan has failed and failed miserably, there is no doubt about it. With Finals less than seven weeks off but little over a third the entire amount needed has been thus far raised. About five-eighths of the entire student body subscribe to the Ring-tum Phi and about half again that many buy the Calyx yearly.

What is to be done about it? What might be done is for the University to levy a blanket tax for worthy student enterprises at the time that the tuition is raised next year, but as little hope is expected from that quarter what else can be done to better the situation?

It is not fair to the business manager to have to be wasting his time in college struggling with the laborious and tedious financing of a struggling publication or of raising money from seemingly unwilling students for Finals exercises. His time

### Fraternities Sign Up for Tournament

All fraternities wishing to enter the annual interfraternity baseball tournament must pay the entrance fee of one dollar at the Athletic office before Saturday morning. Drawings will be made Saturday morning and the contest will open April 21.

ought not to be taken up with such matters. He is not a business man, and knows little of business procedure. Yet this burden has been thrust upon him—for someone must do it. There must be Finals, there must be a University paper, and a year-book. A strange school indeed this would be without them. Students are notoriously "slow pay." Many have a tendency for writing worthless checks, some never subscribe at all. Of course they want a University paper, and perhaps they would be the first to set up a howl if it should have to suspend publication but yet they find it more profitable to read it over the shoulder of their roommate.

Tuesday night the Publication Board went on record as approving the formation of the Washington and Lee campus of a Campus Community Chest to be conducted in much the same manner as community chests are conducted in our cities. The plan was presented by W. H. Cluverius. In short it provided for the formation of a Chest Committee composed of the managers of publications, and the heads of other soliciting bodies approved by the Executive Committee who now solicit funds via the individual subscription method. This commit-

**Special**  
Showing of new Spring fabrics  
\$35 to \$50  
**LOU HILL**  
COLLEGE CLOTHES  
1309 O St.

### Makes Autos Go 49 Miles On Gallon of Gasoline

An amazing new device has been perfected by James A. May, of 7025 Lacotah Bldg., Sioux Falls, So. Dak., that cuts down gas consumption, removes all carbon, prevents spark plug trouble and overheating. Many cars have made over 49 miles on a gallon. Any one can install it in five minutes. Mr. May wants agents and is offering to send one free to one auto owner in each locality. Write him today.



tee it was proposed would have charge of the launching of one big "drive" at the beginning of each school year for all publications, Finals, Y. M. C. A., etc. The amount estimated would be in the neighborhood of seventeen dollars, payable in two or more installments, possibly, in order to lighten the amount to be paid at any one time.

Subscribing to the chest of course would not be compulsory, but it would be expected that every man in the student body give to it. This plan if given hearty support would accomplish the purposes of the much discussed blanket tax and would put all activities on a sound working basis. Managers could give more time to their text books, and less to their account books, and further-

more students would save money in having to subscribe less than they do under the present system, provided of course every student contributed to the common fund.

Whatever its merits the plan is surely an idea of merit in a situation which is demanding immediate remedy.—Ring-Tum-Phi.

### WANT ADS

WILL THE PERSON who got black-covered notebook from Library Tuesday evening return it to the Nebraskan Office? No questions will be asked; contents valued more than cover; name of owner inside.

## SANFORD'S PASTE



**Dries Quick  
Sticks Tight  
Never Stains**

# Yellow Slickers

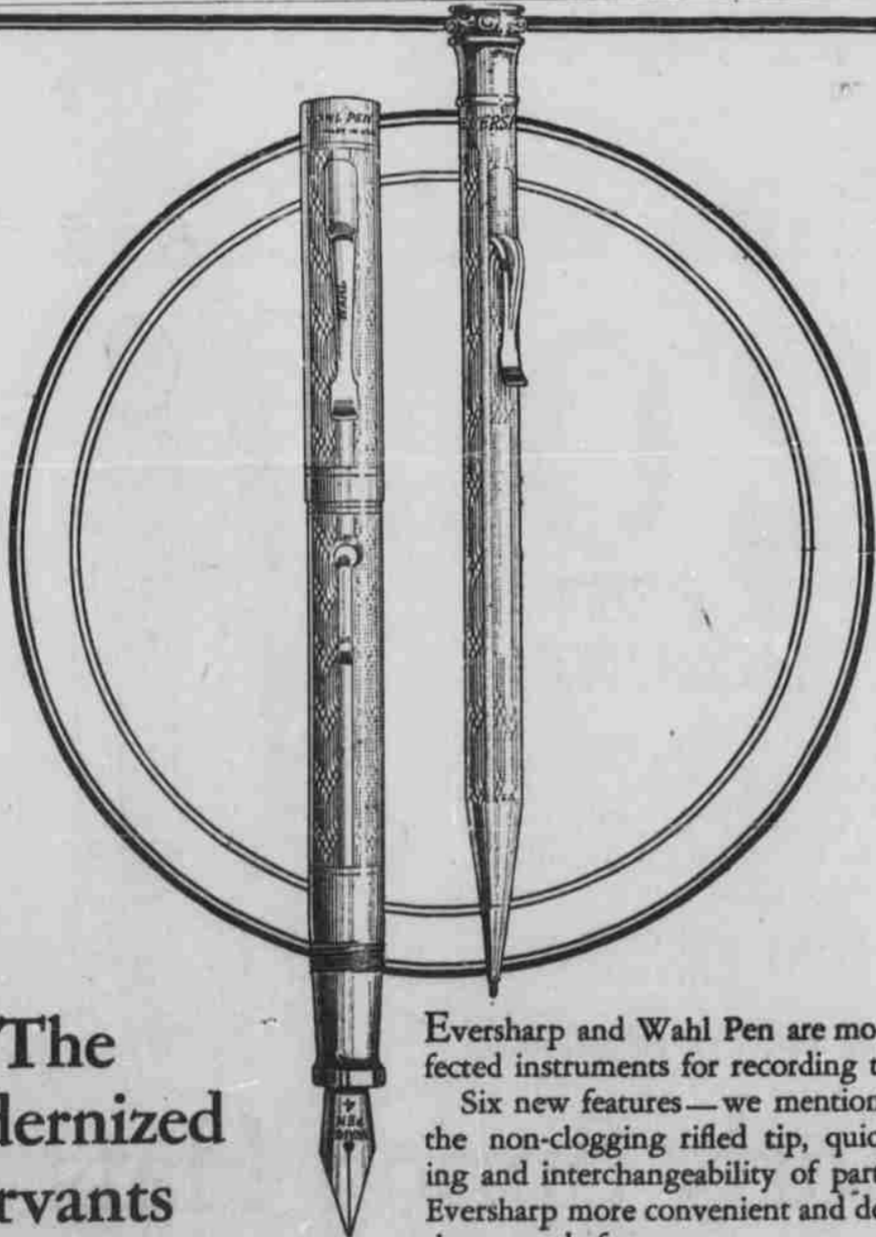
Special This Week  
Only

\$6.50 and \$7.50 Grade  
**\$5**  
Sizes 38 to 46



# Mayer Bros. Co.

ELI SHIRE, President



The modernized servants of thought

Eversharp and Wahl Pen are modern, perfected instruments for recording thought. Six new features—we mention specially the non-clogging rifled tip, quick reloading and interchangeability of parts—make Eversharp more convenient and dependable than ever before.

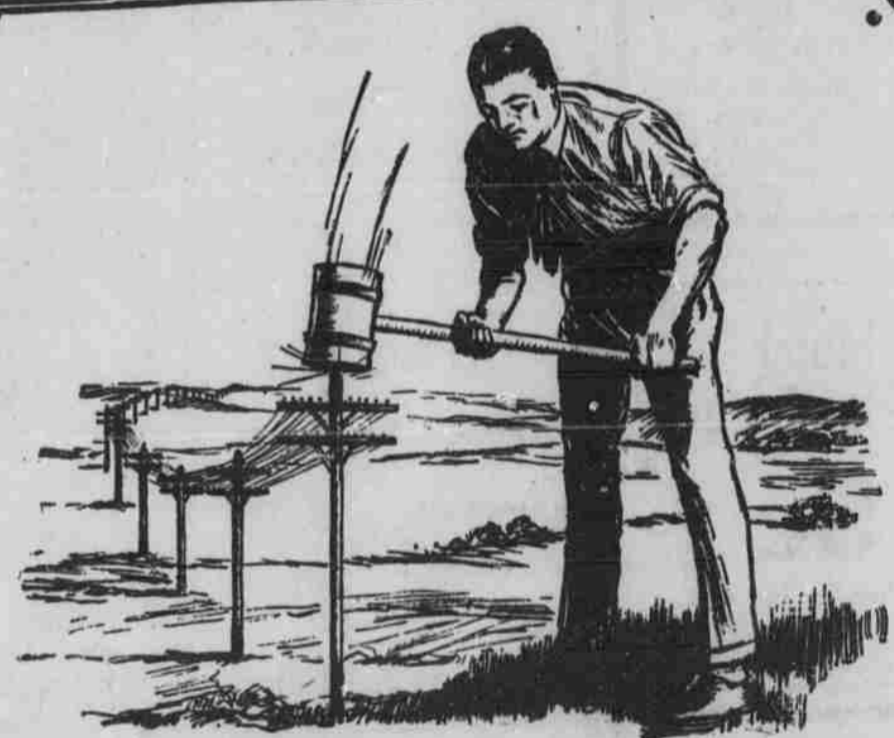
Wahl Pen through the improved all-metal construction has increased ink capacity, strength to resist wear and abuse, and the beauty good taste demands in personal articles.

Eversharp is priced \$1 to \$45—Wahl Pen \$5 to \$55.

Made in duplicate designs for matched sets

Made in the U. S. A. by THE WAHL COMPANY, Chicago  
Canadian Factory THE WAHL COMPANY, Ltd., Toronto  
Manufacturers of the Wahl Eversharp and the Wahl All-Metal Fountain Pen

The New PERFECTED  
**WAHL EVERSHARP & WAHL PEN**



Stake out your claim in this field

ONE field where there is still undeveloped territory, still room for pioneers, is the electrical industry. This will be encouraging news to the man who thinks he was born too late.

If your aptitude is technical, there are years of usefulness ahead of you in helping to design, construct and operate public utility lines. And too, fast-growing markets for electrical apparatus call for more and more college-trained men in the manufacturing end of this industry.

Or if your interests are along commercial lines, there is a broad opportunity for you here in the various departments of purchasing, accounting, distributing, selling and advertising

Published in the interest of Electrical Development by an Institution that will be helped by whatever helps the Industry.

**Western Electric Company**

Since 1869 makers and distributors of electrical equipment

Number 47 of a series