

The ELKS CLUB CAFE
For Uni Students
SPECIAL LUNCHEON
35c and 45c
New Management
MRS. L. M. SIMMONS

WHITE Transportation Company
Operating
Two Bus Lines
Lincoln to Omaha
Mornings, 8 and 11 A. M.
Afternoons, 2 and 5 P. M.
Fare 1.75
Buses Leaving Omaha to Lincoln
At Same Time

Lincoln to York
Fare 1.50
7 A. M. and 2 P. M.
York to Lincoln
9:30 A. M. and 5 P. M.
Passengers protected by
insurance.
For Further Information Call
White Transportation
Depot.
117 No. 9th B2595

RIALTO
ALL THIS WEEK
Wallace Reid
and
Wanda Halley
In the Paramount Picture
"THIRTY DAYS"
Rialto Sympny Players.
SHOWS START AT—1, 3, 5, 7, 9

COLONIAL ALL THIS Week
BLAZE BROADWAY
STOOD UP AND
CHEERED
William Fox Presents
"SILVER WINGS"
WITH MARY CARR
DIRECT FROM ITS
SENSATIONAL RUN IN
NEW YORK
COLONIAL WEEKLY
SHOWS START AT—1, 3, 5, 7, 9.

LYRIC LINCOLN LITTLE THEATER
ALL THIS WEEK
Norma Talmadge
—in—
"The Voice
from the Minaret"
New Photoplay Story of
Desert and Orient
The Hit of the Year
SHOWS START AT—1, 3, 5, 7, 9.

LIBERTY
WHERE EVERYBODY GOES
1—LIBERTY NEWS
WEEKLY
A Visualized News Weekly
2—"A SCANDAL IN
BOHEMIA"
New Sherlock Holmes Adventure
3—"CHOP SUEY"
A red Christie Comedy
4—THE FLORENIS
European Poseurs & Equilibrists
5—ADA WEBER
The Little Aristocrat of Jazz
6—TO BE ANNOUNCED
7—BURKE & DURKIN
Offer "A Tete-a-Tete in Song"
8—DEWITT, BURNS &
TORRENCE
In the Mirthful Creation
"THE AWAKENING OF TOY"
BABICH and the ORCHESTRA
SHOWS START AT 2:30, 7 & 9
MATS. 25c—NITE 40c—GAL. 15c

**SIGMA ALPHA
EPSILON WINS
CAGE HONORS**

Victory Over Delta Tau Delta
Five Saturday Gives Sig
Alphas Greek Cage
Championship.

GAME IS HARD-FOUGHT

Delts Lead at End of First
Half by One Point—Thom-
sen Makes Nine
Counters.

Sigma Alpha Epsilon captured the trophy in the inter-fraternity finals played Saturday afternoon. The final score was 17 to 11. The Delta Tau Delta quintet had the best end of a 9 to 8 score at the end of the first half, but collected only one counter during the final frame. The Delts broke away from the guarding of their opponents during the first half, but were unable to locate the lucky circle.

Thompson stood highest in the scoring column with his nine points, mostly garnered from free throws. Mellens, of the Delts, tossed in a couple of counters from the middle of the floor. The Delts were unable to collect on the free throws allowed them, Haverly and Batty each missing one, and Andrews missing four and making one. Thomson of the Sig Alphas made seven out of twelve.

The Delts slipped in the first field goal but the Sig Alphas ran up eight pointers while the Delts were trying to find the hoop for the second counter. A goal by Andrews and a long one from Mellens put the score at 6 to 9, and Johnson knotted the count with a toss from under the basket. A free toss by Andrews made the score 9 to 8 as the whistle blew.

Thomson tied the score with a free throw at the start of the second frame, and with two more gift baskets and a field goal, the score stood 13 to 9, with the Sig Alphas holding up the heavy end. A fourth foul sent Hubka out of the game. Mellens was sent in for Hubka, and Batty replaced Mellens. A few more points collected by the Sig Alphas put the score at 17 to 9. Mellens tossed in the last goal from the center of the floor.

The Silver basketball which was won by the Sig Alphas, was captured by the Delts in 1920 and '21. The Alpha Sigs held it last year. It must be won three years in succession before it becomes the permanent property of any fraternity.

Box Score

Sigma Alpha Epsilon—	PF	FT	FG	F	Pt
Collins, f	1	0	3	2	
R. Dewitz, f	1	0	0	2	
Landers, c	0	0	0	0	
H. Dewitz, g	2	0	1	4	
Thomson, g	1	7	1	9	
Totals	1	7	1	9	
Delta Tau Delts—	FT	FG	F	Pt	
Mellens, f	2	0	1	4	
Andrews, f	1	1	3	3	
Johnson, c	2	0	1	4	
Hubka, g	0	0	4	0	
Haverly, g	0	0	1	0	
Batty, f	0	0	0	0	
Totals	5	1	10	11	

Referee: Carman.
Substitutions: Batty for Mellens;
Mellens for Hubka.
Running score:

First Half

Sig Alpha	0	2	3	4	6	8	8	8	8	8	8
Delta Tau	2	2	2	2	2	2	4	6	8	9	

Second Half

Sig Alpha	9	11	12	13	14	16	17	17
Delta Tau	9	9	9	9	9	9	9	11

Sig Alpha-Acacia
Sigma Alpha Epsilon placed in the finals of the Greek tournament by frustrating the Acacia hopes 26 to 18 Friday afternoon. With a superior defense, the Sig Alphas held down the Acacia forwards, and smothered Paige, the lanky center. At the end of the first half Sigma Alpha Epsilon led 10 to 4 with Acacia's tally the result of four free throws by Paige. In the closing frame, both teams got an even

DANCE
We guarantee to teach you to
dance in six lessons.
MRS. T. E. WILLIAMS,
B4258 1220D

Excellent Food
Snappy Service
Fair Prices
The
DAILY LUNCH
1238 "O"

break with 14 points each, but the margin gained by the Sig Alphas in the opening half gave them the victory. Collins in the forward birth for Sigma Epsilon tossed in four baskets while the Acacia center marked up ten points, gleaming eight from the foul ring and one field goal. Landers found the hoop several times from the center of the floor.

Sigma Alpha Epsilon—	PF	FT	FG	Pt
Dewitz, f	3	0	1	2
Collins, f	2	0	4	8
Landers, c	3	0	3	6
Thompson, g	2	4	0	4
Dewitz, (H), g	0	0	3	6
Totals	10	4	11	26

Acacia—	PF	FT	FG	Pt
Holbeck, f	1	0	3	6
Simmons, f	0	0	0	0
Paige, c	1	8	1	10
Taft, g	2	0	0	0
Wier, g	1	0	1	2
Totals	5	8	5	18

Substitutions: Acacia—Bell for Holbeck; Holbeck for Simmons, Simmons for Holbeck; Sig Alphas—none.
Free throws—Paige 8 out of 12, Thomson 4 out of 8.

Delt—Silver Lynx
Delta Tau Delta qualified for the finals trimming the Silver Lynx quintet 26 to 15. The Friday afternoon performance was never in doubt for the Tau Delts, who gained the jump on the Lynx from the start and led at the end of the first frame 14 to 7. The short passing system of the Delts found scant opposition in the one-man guard of the Silver Lynx, who resorted to long shots for their offensive. Johnson, center for the Delts, spread over the court caging the ball five times for the high total of the game. Andrews and Bixby counted up with 8 and 9 points respectively. Scott

played a good guarding game for the Silver Lynx.

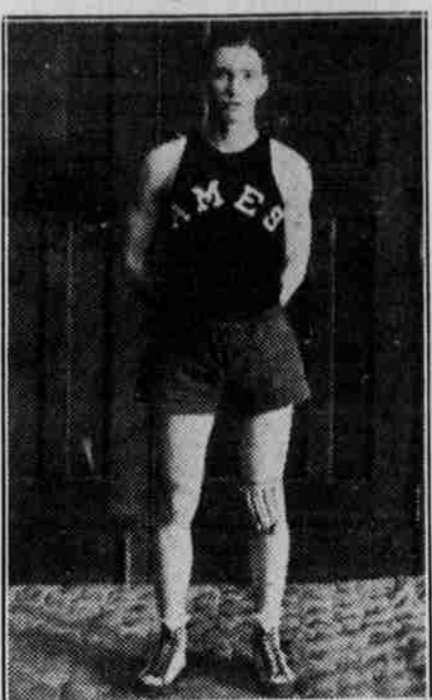
Delta Tau Delta—	PT	FT	FG	T
Andrews, f	2	2	3	8
Melinz, f	2	0	2	4
Johnson, c	2	0	5	10
Haverly, g	3	0	2	4
Hubka, g	2	0	0	0
Batty, f	0	0	0	0
Totals	7	7	4	15

Substitutions: Delta Tau Delta—Batty for Melinz, Melinz for Batty, Batty for Andrews. Free throws: Bixby 7 out of 12; Andrews 2 out of 7. Carmen refereed both games.

SNAPPY SUITS TO ORDER
\$35 to \$50
Young men's goods; and young men's styles. All that is new in woollens are here. A big store and a large stock to select from. We also remodel, repair, clean and press garments for men and women.
MacCarthy-Wilson & Ryan, Inc.
132 NORTH 11st St.

Meier Luncheonettes
MEIER DRUG CO.
"Always the Best"

Benefit Dance
ROSEWILDE PARTY HOUSE
Wednesday Night, February 7
Admission \$1.00 Couple—No Tax.



"Pinky" Green, the captain of the Ames squad which played the Huskers in the Armory last night.

Customer: "Hash, please."
Waiter: "Gentleman wants to take a chance."
Customer: "I'll have hash, too."
Waiter: "Another sport."

Customer: "A glass of milk."
"Let it rain," shouted the waiter.

Customer: "Frankfurters and sauerkraut, good and hot."
Waiter: "Fido, Shep and a bale of hay. Let 'em sizzle."

SPALDING
Indoor and Outdoor
Athletic Equipment
Everything for every sport, including sweaters, jerseys, shoes, etc.
Catalogue sent on request
J. Spalding & Bros.
Lawlor's Sporting Goods Co.

ORPHEUM Monday & Tues. **FEBR. 5-6**
Mat. Tuesday
JOHN GOLDEN
PRODUCER OF
"THE FIRST YEAR" "HANK" &
"3 WISE FOOLS"
"YURY TO THE RIGHT" ETC.
PRESENTS
**THE PLAY
THAT BROKE
THE WORLD'S
RECORD**
LIGHTNING
STAGED UNDER THE
PERSONAL DIRECTION OF
WINCHELL SMITH
Night—Main Floor, \$2.50. Tuesday Mat.—Main Floor, \$2.00
Balcony Sold Out for All Performances
10% Tax Additional

Super-Value
February Sale of
Suits and Overcoats
Here are values that challenge duplication. And here's a promise we make you, backed by our word, that you will not find Suits and Overcoats of equal quality within many dollars of our present prices. Style, fabric and workmanship—all of the best—combine to make this a noteworthy event.
Our Entire Stock of Suits and Overcoats including Society Brand Clothes
Suits and Overcoats that sold formerly from \$30 to \$65 divided into five lots for quick clearance.
\$19 \$24 \$29 \$34 \$39
MAYER BROS. CO. ELI SHIRE Pres.