

## 1922 CORNHUSKER IS DEDICATED TO WELL KNOWN PROFESSOR

Professor Barbour, With Nebraska for Thirty Years, Receives Honor

"To Erwin Hinckley Barbour whose kindly interest in student affairs has won for him a high place in the esteem of all students; whose laudable and splendid devotion to his work have served to inspire thousands of young men and women; whose years of ceaseless activity have helped Nebraska to achieve the success which is hers today, we dedicate this 1922 Cornhusker." In these words Editor Ward Randol dedicates the 1922 year book.

Dr. Barbour is chairman of the department of Geology and Geography of the University of Nebraska. He has been an instructor in the University for thirty years. He served for many years as state geologist for Nebraska. Dr. Barbour is also curator of the museum.

Dr. Barbour graduated from Yale University in 1882 and received his Ph. D. at Yale in 1887. After graduation he served for a time in the United States geological survey stationed at the Yale museum. Before coming to Nebraska Dr. Barbour was connected with Iowa College at Grinnell for two years.

### DR. HENRY F. COPE TO BE GUEST OF FACULTY

Dr. Henry F. Cope will be guest and speaker at a Faculty luncheon at the Grand Hotel Tuesday, April 25, at 2:15 o'clock.

Dr. Cope is general secretary of the Religious Education Association and is a leading specialist in this field. He has been requested to speak on co-operative schools of religion at the state universities, a movement in which every university instructor should have an interest.

Reservations must be made by Monday noon at the Secretary's office or with Professor Fossler, Dr. Deland or Dr. Thomas.

### GREEK TRACK LAURELS WON BY DELTA TAU MEN

(Continued from Page One.)  
Phi Kappa Psi, 2 3-4 points.  
Alpha Sigma Phi, 4 points.  
Delta Epsilon, 3 points.  
Alpha Gamma Rho, 1 point.

#### Interfraternity results:

100-yd dash—  
First heat: Lloyd, Hatch, Kobel, time 16 2-5 seconds.  
Second heat: Trexler, Baldwin, Klemke, time 16 2-5 seconds.  
Third heat: Dewitz, Bloodgood, Miller, time 16 2-5 seconds.  
Fourth heat: McCarthy, McAllister,

time, 10 4-5 seconds.

Fifth heat: Knowlin, Thomsen, Shepard, time, 10 3-5 seconds.  
Finals—Lloyd, (Beta), Trexler, Knowlin, Baldwin, Hatch, Bloodgood, time, 10 2-5 seconds.

220-yard dash—  
First heat: Lloyd, Hart, Landers.  
Second heat: Trexler, Baldwin, Hatch.

Third heat: Crites, McCarthy, Kohl.

Fourth heat: Outhouse, McAllister, Sloan.

Finals—Lloyd, (Beta), Trexler, Crites, Baldwin, time, 23 1-5 seconds.  
Wier (Farmhouse), Cook, Hoy, Half mile dash—  
Johnson, time, 2:05 3-5 seconds.

Shot put—  
Parks (Delt), Munn, Meyers, Hartley, distance, 38 feet 3 1-2 inches.

Pole vault—  
Riddlesbarger (Sig Ep), Gleason, Lake, Hartley and Gish, height, 10 feet, 6 inches.

Discuss throw—  
Meyers (Delt), Parks, Peterson, Putman, distance, 111 feet, 8 inches.

Broad jump—  
Hatch (Farmhouse), Adamson, Gish, Putman, distance, 19 feet 6 inches.

High jump—  
Parks (Delt), Moser, Drishaus, Gish tied for second, height 5 feet, 7 inches.

Javelin—  
Schoepel (Sigma Nu), Wenke, Madey, Hartley, distance, 147 feet, 6 inches.

1 mile run—  
Wier, (Farmhouse), Cook, Reese, Ross, Jeter, time 5:12 2-5

440 yd dash—  
Woodward (Delta), Summers, Cozier, Cressell, time 55 seconds, flat.

60-yard high hurdles—  
First heat: Lewellen, Crites, McCarthy.

Second heat: Meyers, Crocillus.  
Finals—Lewellen, (Sig Ep) Meyers, Crites, McCarthy, time 8 3-5.

110-yard low hurdles—

First heat: Meyers, Gish.  
Second heat: Lewellen, Hatch.  
Third heat: Smith, Broadwell.  
Finals—Meyers (Delt), Lewellen, Gish, Smith, time 12 4-5 seconds.

880 relay race—  
Sigma Alpha Epsilon, Sigma Phi Epsilon, Delta Tau Delta, Delta Chi, time 1:40.

### R. O. T. C. MEN GET PROMOTIONS IN ALL COMPANIES

(Continued from Page One.)

#### Company I

To be 1st Sergeant: Edward M. Buck.

To be Sergeants: Harlow C. Walker, Leland H. Anderson, John A. Cameron, Earl C. Rohrbaugh, Winifred R. Blume, Herbert Brownell.

To be Corporals: Albert E. Peterson, Edwin J. Eilers, Raymond Eller, Clarence R. Jensen, Riley R. Kite, Andrew R. Larson, Donald G. McGregor, Ray E. Mattison, Dale D. Schilling, Regnor M. Sorensen, Jay W. Hepperly.

#### Company K

To be 1st Sergeant: Lester G. Foxwell.

To be Sergeants: Russell E. Buggeon, Milton O. Brown, George K. SEVEN—NEBRASKAN  
Lewis, Philip G. Johnson, Victor J. Weiss, Theodore N. Hartzell.



LEARN TO DANCE THE EASY WAY

Private Studio  
Phone For Appointment  
**Mrs. T. E. Williams**  
B-4258 1220 D

CALL

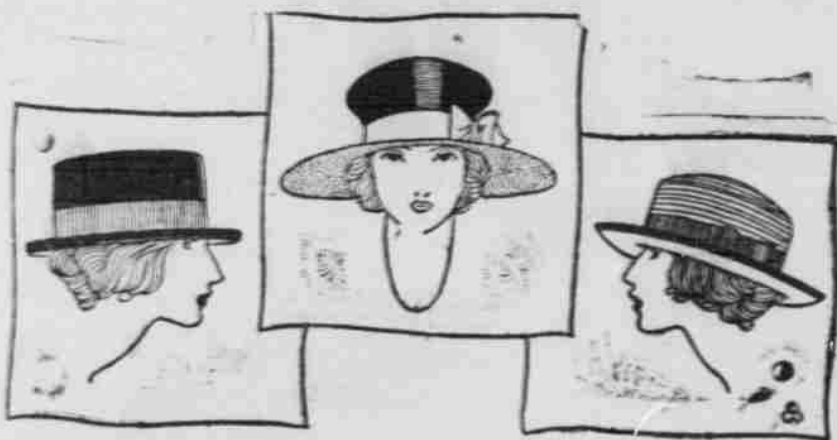
# B-3677

## Varsity Cleaners

Roy Mythers

Fred Thomsen

**STERNBERG'S**  
QUALITY-STYLE-COURTESY  
OUTFITTERS TO WOMEN. 1316-1317 O STREET.



Monday Sale of 500  
**NEW BANDED HATS**  
Reg. 3.95 to 6.50 Values

ALL NEW SMART SHADES IN ALL GOOD COLORS - INCLUDING WHITE SAILORS, POKES, SIDE ROLLS, PENCIL BRIMS, DROOPING BRIMS  
IDEAL HATS FOR SUMMER WEAR  
AT LESS THAN WHOLESALE COST

# 169

**STERNBERG'S**  
QUALITY-STYLE-COURTESY  
OUTFITTERS TO WOMEN. 1316-1317 O STREET.

Sincerity Service Satisfaction

# Rudge & Guenzel Co

MEN'S STORE NEWS



# BOY!

Where Did You Get That Hat?

Sure feels good on my head. I'm going to get one like it.

"Rudge & Guenzel's, of course. Haven't you learned yet that they sell REAL Hats for us College Fellows? You're slower than I thought you were — go down there and get a hat—then you won't be howling about your hat slipping or being too tight. They FIT a hat on you—not on themselves.

"Say—ring off, will you—I'm in a hurry "And how do you like the style? Nifty—eh? That's something else you get with a good quality hat there. And I'll bet you this hat holds its shape, too. The last one I bought did—and this one is the same brand—a Stetson—and \* \* \*

to get me a Classy new hat, and I'm going to Rudge and Guenzel's, too. Watch for me—I'll be the most popular "Apollo" you ever saw when I come back."

He is popular, too. Just notice the next "Apollo" you see. Ask him if he wears a Stetson from Rudge & Guenzel's. He'll say, "Sure"—or "No—but, believe that's where I'm going to get my next 'topper.'"

Store for Men—Street Floor

# Rudge & Guenzel Co

Sidney Erickson,  
Major, Infantry, (DOL)  
Executive Officer.

acch.,oj-ro B?z

# PILLER'S PERFECTO'S LEASE

16th & "O".

B4423