

**THEATRES**

**Oliver Theatre**

SAT. MAT. AND NIGHT, MAY 1  
**MAUDE ADAMS**  
 in "QUALITY STREET"  
 Orch., \$2; Bal., \$1.50, \$1; Gal., 50c  
 May 3—All Summer  
**BARROW-HOWARD**

**Cyphur** VAUDEVILLE EVERY  
 THURSDAY - FRIDAY - SATURDAY

MATINEE 2:15  
 NIGHT 8:15  
 PRICES 15c-25c-35c-50c-67c  
 William Morris & Co.  
 Charlotte Greenwood  
 and Sidney Grant  
 Melville & Higgins  
 "Edge of the World"  
 The Cromwells  
 Wright & Dietrich  
 Moore & Jenkins

**LYRIC THEATRE**  
 VAUDEVILLE & PHOTO-PLAYS

THREE SHOWS DAILY  
 2, 7 & 9  
 MAT. 10c  
 NIGHT 15c  
 THE THREE GUYS  
 "Minatrelsy a la Carte"  
 LES DIODATTIS  
 Magnificent Exhibition  
 "Pawns of Mars"  
 "Boobley's Baby"  
 "Heart-Selig News"

EW. TRUMAN, PRES. LEO SOUKUP, MGR.  
**THE LINCOLN-DYE WORKS**  
 CLEANING & DYE WORKS  
 320-322  
 50. ELEVENTH ST.  
 LINCOLN, - NEBR. -

**WHITMAN'S GLASSY CANDY**  
**MEIER DRUG CO.**  
 13th and O STREETS

**NORTHWESTERN TEACHERS' AGENCY**  
 The leading Agency for the entire WEST and ALASKA. Now is the best time to enroll for 1915-16 vacancies. Write immediately for free circular.  
**BOISE, IDAHO**

**GARDEN GLO PERFUME**  
**PILLERS**  
 PRESCRIPTION  
 PHARMACY  
 Cor. 16th & O St. Phone B4423

**GEORGE BROS.**  
 Printing  
 1313 N STREET

**L. C. Smith & Bro.**

**Typewriter Co.**

**BALL BEARING  
 LONG WEARING**

New, Rebuilt and Rentals  
 125 No. 13th St.  
 B2080

**ENGINEERS MAKE TRIPS ON CAR LINES**

Electrical Engineers Take Notes on Traffic—Will Make Report to the Lincoln Traction Company

The electrical engineers listened on Wednesday morning to a special lecture given by Mr. E. C. Higgins of the Western Electric Company. The subject discussed was "Side Lights on the Telephone Industry."

The beginnings of telephony, the growth of the system, and the perfection of its apparatus were all touched upon. The organization and manufacturing plant and processes of the Western Electric Company were described.

Illustrations were used which emphasized the magnitude and importance of the telephone industry. Curves were shown of the current waves corresponding to spoken words.

The electrical engineers made trips last Tuesday on the College View cars of the Lincoln Traction Company. Beginning at 5:30 a. m., one student was on each car for all runs of both the "high" line and the "low" line throughout the day. The last car reached the barn at 12:40 a. m., Wednesday.

The occasion for these continuous rounds was a traffic count upon the lines mentioned. The class in Electrical Railways, assisted by volunteers from the Junior class, recorded the entrance and exit of all passengers, noting the stop at which such change occurred. They are now prepared to plot curves showing the traffic characteristics and will make a report to the Traction Company.

**ENGINEERS STUDY TRAFFIC CURVES**

College View Lines of Lincoln Traction Company Plotted by Engineers

For the purpose of plotting curves showing traffic characteristics of the College View lines of the Lincoln Traction Co., a number of Electrical Engineering students spent last Tuesday on the cars of the company on both the "High" and low lines. There was on student on each car each trip starting with the first car in the morning at 5:30 and ending with the last car at night at 12:40.

The reason for these continuous rounds was to get a traffic count. The entrance and exit of all passengers and the number of stops required was recorded and as soon as the plot can be computed the students will make a report to the Traction Co.

**SENIORS INVITED TO BREAKFAST AT FARM**

Breakfast to be Served at 7:30—Games, Races and Weight Contests Arranged

The Junior class will entertain the Seniors at the Farm Saturday morning.

At 7:30 a breakfast will be served, cafeteria style, under the direction of the Home Economics Department. Everything served will be prepared at the Farm.

The Committee on Entertainment has planned a full program of games, races, and weight events. The feature of the day will be the baseball game between the Junior and Senior girls. The former issued the challenge, so it is expected that the Junior girls will turn out full force to cheer their sisters on to victory.

Miss Eva Fiske will umpire the game and all races. She has appointed an able bodyguard to assist her in all cases of hair pulling.

This picnic is new and original in the way of inter-class entertainments. On the success of this event will depend the continuance of this sort of entertainment as an annual event.

The crowd will leave for the State Farm by a special 7:30 o'clock car.

**SPECIAL PHARMACY ANNUAL THIS YEAR**

Elaborate Edition to be Three Times the Size of the Book Published Last Year

A much larger and more elaborate annual than in former years is being prepared by the Pharmacy Department to be ready about May 30. The book goes to all the high schools of a medium standard in the state, contains besides material relating to the Department of Pharmacy, a section devoted to student activities in the University.

This is the only pharmacy edition of its kind in the United States. One of the unique features of the edition is its value as an advertisement.

The department has received letters from various Pharmacy schools in the United States and several from other states asking for a copy of this annual. The colors of the department, which are purple and gold, will be embossed on the cover of the book.

As a whole the edition will be a very attractive one and cannot help but reflect great credit on the department. The date for appearance of the annual is about May 30.

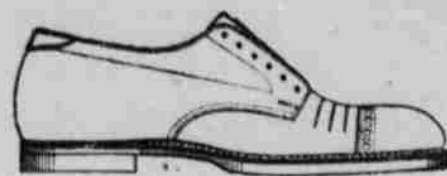
The staff is as follows:  
 R. V. Bixby, editor; H. L. McMur-

ray, assistant editor; E. W. Schaufberger, business manager; S. B. Aronson, assistant business manager.

The Claffin Printing Co., at University Place, has the contract for printing the book.

Handmade  
 "I believe in the kiss-and-make-up theory," announced the agitator of peace. "And I find things that way," replied the boastful boy. "Whenever I kiss I notice the make-up."—Judge.

**Bostonian**  
 RUBBER SOLED OXFORDS



\$4 AND \$5 PAIR

Can be had in Tan or Black Calfskin. A very stylish, comfortable, cool and flexible shoe.

LONG-WEARING RUBBER SOLES

If its Shoes Shop at

13th & "O" **Byrnes** 1307 "O"



Valve-In-Head Motor Construction

In twelve seasons of successful use the Buick valve-in-head motor has demonstrated its superiority beyond all shadow of doubt.

First of all, it is correct in principle. It is standard in practically all European cars, and it is rapidly being adopted by American manufacturers. No stronger proof could be offered that IT IS RIGHT.

**PIONEER BUILDERS**

The Buick Company is the pioneer user of this type of motor. Since the first Buick car was built Buick engineers have been developing this motor, not in principle, but in refinement of detail. Today the Buick valve-in-head motor is not only the best type of motor; it also is the best motor of its type.

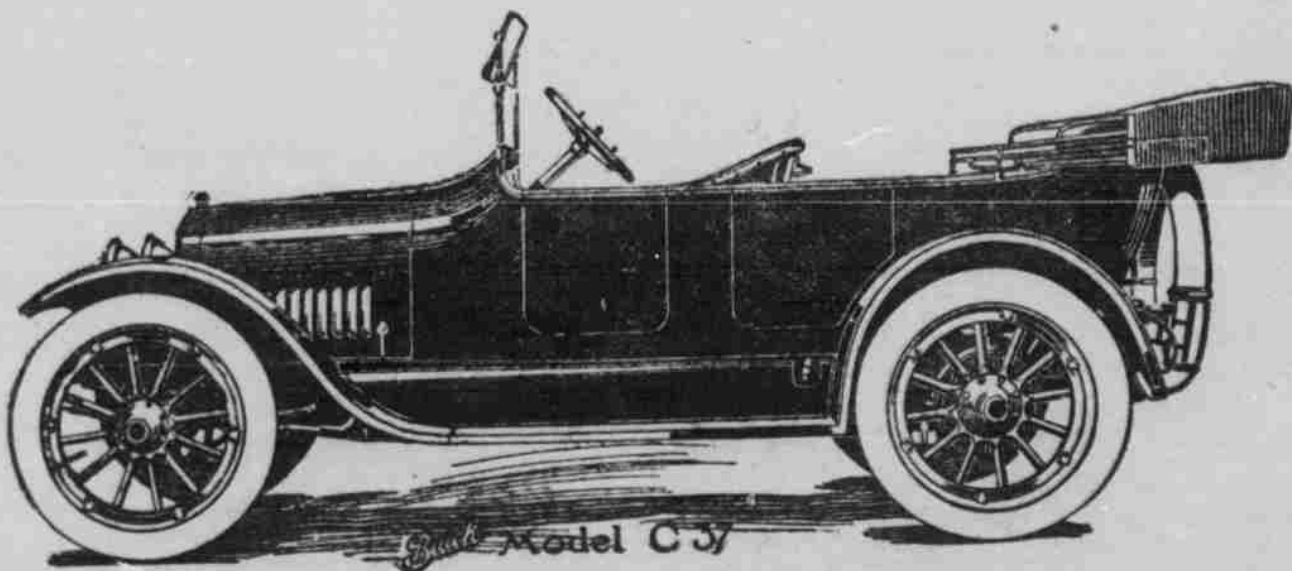
**POWERFUL, EFFICIENT, DEPENDABLE AND ECONOMICAL**

In all the qualities that go to make a motor best, the valve-in-head represents the best, in theory and practice, that the world's best automobile engineers have thus far been able to produce.

**NEBRASKA BUICK AUTO CO.**

OMAHA LINCOLN SIOUX CITY

FOURS AND SIXES—\$900 TO \$1,650 F. O. B. FACTORY



\$1,235 F. O. B. FLINT, MICH.

WHEN BETTER AUTOMOBILES ARE BUILT, BUICK WILL BUILD THEM.