

## JUNIORS SELECT PLAY

WILL PRESENT BOOTH TARKINGTON'S "THE MAN FROM HOME" FOR FIRST TIME.

### TRYOUTS TO BE HELD SOON

December 8th Set for Date of First Eliminations — Manuscript Ready For Contestants at Library.

After having read over many manuscripts of different plays, the Junior Play committee has finally decided upon the play that they will put on the boards this year at the Oliver. The final judgment fell upon "The Man From Home," by Booth Tarkington—a play which has had great success in the east. It was originally produced in Chicago at the Studebaker theater and played there and in New York for two years. William Hodge played the main character part, which had a great deal to do in the success of the play.

It was with some difficulty that the committee received permission from Liebler and company to release it for amateur work, and it was only secured after a payment of a high royalty. That the play gives such a large field for character acting was what prompted the committee in its selection. They feel that there is enough of material in the school to warrant its production.

The west has not been fortunate enough to witness this play and consequently the Lincoln audience will see it for the first time.

The cast of the play includes fifteen characters, all of which are of importance, and its diversity of parts will give a better chance for proper selection.

The complete arrangements of the tryouts have not been made; only in the selection of the date, December 8th.

Miss Ethel Hills, the chairman of the committee, will place several copies this morning at the reserve desk in the library.

The presentation of plays by the Junior classes is comparatively young, and this will be the fourth annual play. Each year the standard of the plays and work has risen, and it is felt that this year's play will surpass them all. Miss Howell will coach the play.

Ralph Northrup will serve as business manager.

#### NEW COMPLIMENTARY TICKETS.

An innovation has been introduced by the Student Organization committee in the matter of complimentary tickets. These much desired trinkets are printed and used uniformly by all university functions. A list of complimentary tickets is given Professor Tuckerman, who makes out these tickets non-transferable.

Cornell, California, Minnesota, Northwestern, Ohio State, Ohio, Syracuse, Columbia, Ohio Wesleyan, DePauw, Kentucky, Florida, Georgia, Baylor, Nebraska, Nebraska Wesleyan, Stanford, Washington, Wisconsin, Iowa, Missouri, and Oklahoma Universities, and Kansas State, Iowa State, Swarthmore and Oregon Agricultural colleges all have active prohibition clubs to study the liquor problem.

Artistic dance programs and menus for particular people. George Bros., Printers, 1313 N street.

*We know you will want to be well dressed on Thanksgiving day, and our YOUNG MEN'S STYLE SHOP is filled with the things that will please you most. Stylish new suits and overcoats; rich, beautiful neckwear; gloves, hosiery, shirts, underwear---everything to dress you just as you would like to be dressed. Our salesmen will be glad to show you.*

## FARQUHAR CLOTHING COMPANY

The Home of Good Clothes

1325 O Street

#### CALENDAR.

Friday, November 21.

Sophomore hop—Lincoln hotel.  
Sigma Phi Epsilon—Fraternity hall.  
Alpha Sigma Phi—House party.  
Phi Gamma Delta—House party.  
Xi Psi Phi—House party.

Saturday, November 22.

Delta Chi—Music hall.  
Pi Beta Phi—Folsom hall.  
Achoth—House party.  
Delta Zeta—Walsh hall.  
Agricultural club meeting—Farm.

Jones' Orchestra, L9666.

(Continued From Page One.)

#### ANOTHER NEBRASKAN MARRIED.

Announcements have been received of the marriage of Miss Della Ingram to Henry Watkins of Baltimore, Md., on November 19. Miss Ingram will be remembered as a former graduate and assistant in the botany department. For a number of years she has been engaged in plant pathology work in Washington.

#### "SPA"

Try the Y. M. C. A. Lunch Room Cafeteria Plan  
City Y. M. C. A. 13th and P

#### THEATRES

### Oliver Theater

TONIGHT, SAT., AND MAT.

#### "THE THIEF"

Nights—75c to 25c Mat.—50c & 25c

Wed., Mat., & Night, Nov. 26

#### ROBIN HOOD

Thanksgiving, Matinee and Night  
"LITTLE BOY BLUE."

### ORPHEUM

THUR., FRI., SAT.—NOV. 20, 21, 22

The Musical Comedy Oddity  
THE LITTLE PARISIENNE  
With Valerie Serice

TED LORRAINE & HATTIE  
BURKS

SUTTON, M'INTYRE & SUTTON  
JACK G. M'LALLEN & MAY CAR-  
SON FROSIN  
MANNING, MOORE  
& ARMSTRONG  
CARL ROSINI, Assisted by MILE  
MARGARET

Thur. Fri. Mat., 15, 25.; Sat., 15, 25,  
50. Night, 8:15. Prices, 15, 25,  
35, 50, 75.

### Lyric Theatre

FRI., SAT., NOVEMBER 20-21-22.

CHILD'S HAWAIIANS

Presenting

"A Night in Honolulu"

FINLAY & CHESLEIGH SISTERS  
A Band Idea of Musical Comedy

PATHE'S SEMI-WEEKLY

"TANGLED THREADS"

"THE PROBATIONER"

"HIS NEPHEW'S SCHEME"

3 Shows Daily—Mat., 2 p. m., Night  
7-9 p.m. Mat. all Seats 10, Night 15c

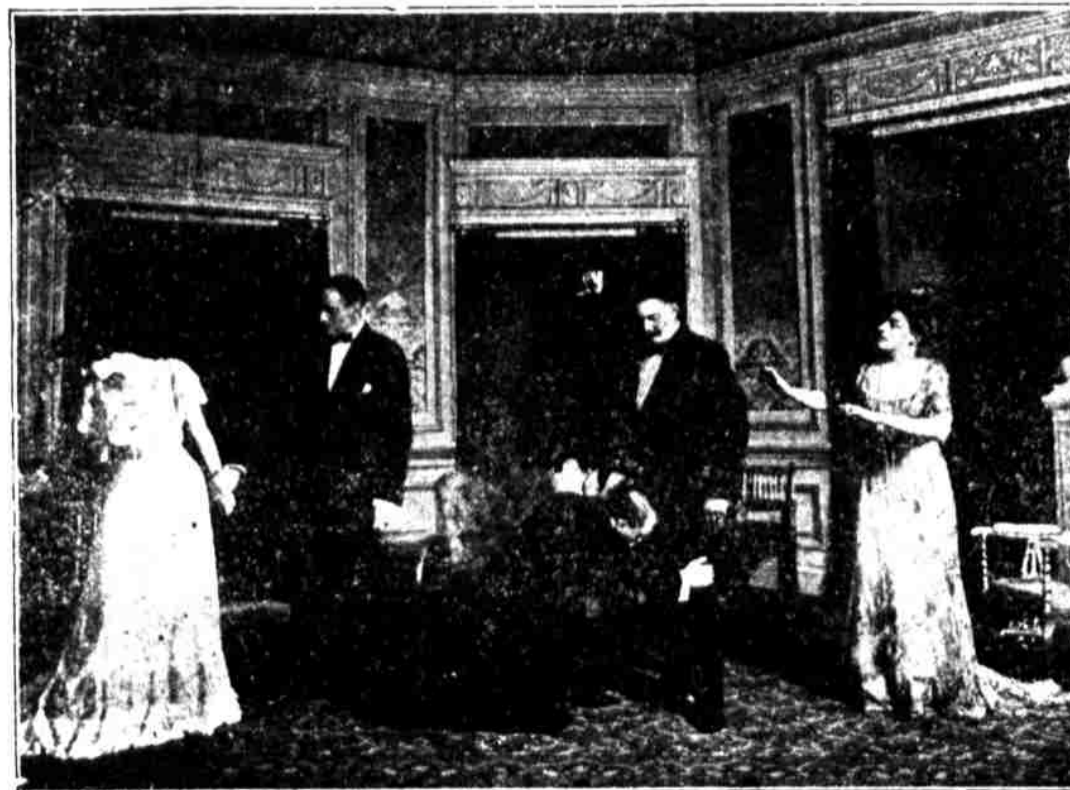
## THE FOLSOM BAKERY AND CAFE

1325 - 1331 N STREET

Asks a share of your patronage. We are equipped to serve you and serve you right. A trial is all we ask.

## THE FOLSOM BAKERY AND CAFE

1325 -- 1331 N STREET



Scene from "THE THIEF" at the Oliver Tonigt & Saturday

## The Magnet

1511-O ST.

Feature Films for Friday  
and Saturday

The End of the Circle —  
two reels

His Chorus Girl Wife

The Girl in the House  
Boat—One Big Laugh