

ADVICE ON FOOTBALL

W. C. Connett Tells Youngsters How to Play Game.

Noted Referee Says Long, Low Punt is Popular—Drop and Place Kick Growing More Important Each Succeeding Year.

"Keep a cool head," is one of the tips William C. Connett hands out to aspiring young football players. Connett will referee the most important games in the west this season. He will handle some of the big battles for St. Louis, Missouri and Washington.

Commenting on the difference between practice and playing, Connett handed out a few bits of advice which will no doubt prove of value to the schoolboys. He cited several instances of where players had forgotten even the simplest things about football in the excitement of a game because of the fact, that they got rattled. Coolness, he said, was one of the main requisites for a player running a team.

"There are many kinds of kicks in football and as many ways to make them," says the famous gridiron star.

"The most common is the long, high punt. McKay, Brown's captain last year, was the best man I ever saw at this style. He had the ball at arm's length and on a level with his head, the ball pointing in at an angle of 30 degrees. He brought his leg up straight to the knee until his foot turned inward at the same angle as the ball. He caught the ball on the side, giving it the spiral twist. His kick continued through until his foot was over his head.

"In the east the long, low punt is gaining favor. The ball travels about ten yards high, and is hard to handle. Pennsylvania's quarter back had this kick down fine last year. His kicks would travel through the air for twenty yards, hit the ground, then roll forty to fifty yards more.

"The drop kick and place kick will be more important this year, for there is a lack of scoring plays within the twenty-yard line. A team must have a man who can make field goals. The place kick gives more distance, but is less accurate than the drop kick, because two men handle the ball in the former.

"A drop kick is usually made by dropping the ball with a slight tilt backward. When it touches the ground the toe hits the ball on the under side.

"The ball should be dropped on a level spot. Keep your eye on the ball after gauging the distance and direction of the goal post."

LEFT HALF-BACK GILBERT,



One of Wisconsin's Shifty Players.

Political Advertisement. REPUBLICAN NOMINEES.

Election Tuesday, November 7, 1911. Polls Open 8 A. M. to 6 P. M.

State Ticket.

Judges of the Supreme Court—Charles B. Letton, William B. Rose, Francis G. Hamer.

Railway Commissioner—Thomas L. Hall.

Regents of State University—Frank L. Haller, Victor G. Lyford.

County Ticket.

Judges of the District Court—Willard E. Stewart, Albert J. Cornish, P. James Cosgrave.

Clerk of the District Court—J. S. Baer.

County Judge—George H. Risser.

County Treasurer—Philip A. Sommerlad.

County Clerk—Harry E. Wells.

Sheriff—Gus A. Hyers.

County Commissioner—Clinton J. Mitchell.

County Superintendent—W. H. Gardner.

County Surveyor—W. S. Scott.

County—V. A. Matthews.

City Ticket.

Sanitary Trustee—Kent D. Cunningham.

Police Judge—Bruce Fullerton.

Justices of the Peace—W. T. Stevens, John E. Lowe.

Constables—A. M. Bartram, ILra Miller.

STUDENT VOTERS OF NEBRASKA.

We take pleasure in presenting the Republican candidates in the Daily Nebraskan.

In presenting this list of candidates to you, we feel that we have one of the strongest and best tickets ever presented to the voters of this county, and a ticket for which no apology need be made or is necessary. Every candidate is well qualified for the position to which he aspires and we urge your earnest and enthusiastic support for the straight republican ticket.

These candidates were nominated by the direct primary vote, were the choice of the republican voters of this county, and we ask you to support the candidates thus selected. Our candidates are well and favorably known throughout Lancaster county as capable, honest and worthy of your fullest confidence.

Many of our candidates are university graduates and our whole ticket is deserving of your support. Don't forget to vote.

NIELS P. HANSEN,
Chairman County Republican Central Committee.

J. REID GREEN,
Secretary.

Political Advertisement.



PHIL A. SOMMERLAD.

Our acquaintance with the republican candidate for county treasurer, Philip A. Sommerlad, has been of so long duration that we esteem it a

Political Advertisement.



THOMAS L. HALL

Republican Candidate for Railway Commissioner

Mr. Hall graduated from the University of Nebraska with the class of 1890 and from the Law department of the university with the class of 1896 and has always been a loyal alumnus. He is a native of Nebraska and has

spent his whole life in the state and his experience as farmer, banker and lawyer particularly fit him for the office which he seeks. He is deserving the support of University men.

privilege to call the attention of the voters of the county to Mr. Sommerlad's life in Lincoln.

He has been for the last five years secretary of the Woodruff Bank Note company and before that for eleven years cashier and bookkeeper for the Western Newspaper Union. He has been official member of St. Paul's church for fourteen years and was treasurer of the church for six years. Mr. Sommerlad has ability and character, with a most agreeable personality and we express our fullest confidence in his fitness to discharge the duty of the office to which he aspires. Signed: Geo. J. Woods, Alva C. Townsend, H. K. Burket, A. D. Benway, Dr. H. J. Winnett, M. B. Reese, J. C. Harpham.

Political Advertisement. FOR COUNTY COMMISSIONER

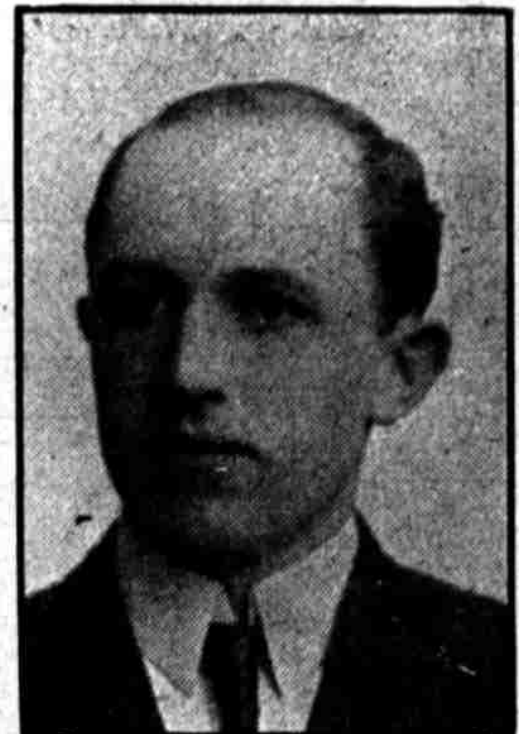


Clinton J. Mitchell

Clinton J. Mitchell, candidate for county commissioner on the republican ticket, was born in Lancaster county thirty-six years ago and has always lived in this county. His home and interests are here and will be in the future, and he will always take pride in working for the good of Lancaster county. He has been a heavy taxpayer since he was eighteen years old, when he began to feed cattle, and every dollar he has was made by hard work. Mr. Mitchell has always voted the republican ticket and promises, if elected, he will at all times work for the best interests of the county and in the ministrations of

county affairs, will use the same judgment and consideration he would in his private affairs. The primary vote of Aug. 15th shows that Mr. Mitchell was well endorsed by the Third district, for his vote was nearly double that of any other candidate for commissioner.

Political Advertisement.



BRUCE FULLERTON

Law '09

Republican Candidate for Police Judge

Political Advertisement.

Gus. A. Hyers

Republican candidate for Sheriff, is a young man of sterling quality, born and raised in Nebraska; a resident of Havelock, well fitted for the office, and would appreciate your vote.