

LE ROSSIGNOL TO SPEAK

POLITICAL ECONOMY PROFESSOR TO DISCUSS NEW ZEALAND.

Professor Le Rossignol, head of the political economy department, will speak at convocation today on "Life in New Zealand." Dr. Le Rossignol spent several months in New Zealand studying economical conditions and is a recognized authority upon the subject. Last year, he published a book in collaboration with Mr. Stewart, a native of the islands, called "State Socialism in New Zealand. The book has attracted large attention.

George Bros., engraving, monogram stationery, dance programs.

VIKINGS ORGANIZE.

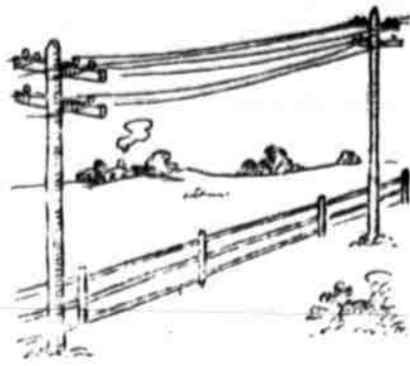
The Vikings, the Junior interfraternity, met Friday and selected officers. Clayton S. Radcliffe was elected president and Ralph Halligan was made secretary-treasurer.

The following new members were selected to fill vacancies:

- F. E. Long, Phi Gamma Delta.
- Carl Meyer, Phi Delta Theta.
- Rosewell Haskell, Delta Upsilon.
- W. B. Haley, Delta Tau Delta.

Back from Chicago.

Prof. O. V. P. Stout returned last night from Chicago, where he went as a delegate to the National Deep Waterways Conference. There were nearly a thousand delegates present.



Our exclusive lines wont interest you if you're a confirmed stand-patter, content to let well enough alone.

But if you're a thoughtful progressive-looking for something better—we can hld your attention.

Kensington clothes are not in the "good enough" class—they're "better yet."

In attractive new fabrics and colorings for fall.

\$20 to \$40

**MAGEE & DEEMER,
1109 O Street**

CLASSIFIED COLUMN

AGENTS

Give me your trade. R. Clark, student agent Yule Laundry. Auto 5744.

FOUND

FOUND—A sorority pin. See Bus. Mgr. at Rag office. 14-3

FOUND—On campus, a fountain pen. Call at Rag office. 13-3

LOST

LOST—Fountain pen between Memorial hall and O street. Return to Rag office. 15-3

LOST—Alpha Phi sorority pin in library or campus. Finder return to Rag office. 14-2

LOST—A silver serpent pin. Return to Rag office. 14-3

LOST—Black leather handbag with long handle. Contained Onoto fountain pen, etc. Return to Rag office. 13-3

LOST—Gold Missouri Valley championship football watch fob. Return to Rag office. Reward.

FOR RENT.

FOR RENT—Nicely furnished rooms for girls, at 1430 R Street. Phone F 1256. 16-3

FOR RENT—Modern room for gentleman. 534 No. 12th St. Auto phone 4563. 15-3

NICELY furnished rooms for girls at 1430 R St. Phone F 1256. 15-1

ONE furnished room. Will also rent piano. Enquire at 1323 S St. 14-3

December 8.

Intercollegiate debate.

GOPHERS CONFIDENT BUT EXPECT STRUGGLE

(Continued from Page 1)

most part, been secret, but Saturday the gates were thrown open and the students showed their enthusiasm by turning out one thousand strong to see the Varsity trim the second team. The cheer leaders were there and it is significant of the approaching struggle that cheers were practiced for the Minnesota-Nebraska game.

If you want Hagensick's orchestra, make your dates early. Phone Auto 2990. 14-10t

Baker's Cafe serves cakes all day. Also everything else in season. Service first class. 16-tf

Don't forget Johnny Leard at 1206 O St. 14-5t



WHAT DO YOU NEED TODAY

in our line of Pamphlets, Programs, Menus, Wedding Stationery and all kinds of Commercial and Stationery Printing.

VanTine Printing Company
128 N. 14th St.

Reliable, Prompt—Auto 3477

UNIVERSITY JEWELER & OPTICIAN

C. A. Tucker
JEWELER

S. S. Shean
OPTICIAN

1123 O STREET YELLOW FRONT

Your Patronage Solicited

AT THE THEATRES

OLIVER THEATRE

Wed. Mat. & Night, Oct. 18. The Matinee curtain will be held until the parade has passed. The Comedy That Has Made Millions Laugh.

"McFADDEN'S FLATS"

Mat. 50c & 25c. Noght \$1.00 to 25c

Oct. 20-21. Matinee Saturday MOUNTAIN ASH MALE CHOIR

LINCOLN MATINEES (Except Monday) 2:30 EVENINGS AT 8:30

ORPHEUM

Bell 9368 Aut o 152 **ADVANCED VAUDEVILLE**

Week Opening Monday Eve. Oct. 9

"SCROOGE"
ORIGINAL FOUR LONDONS
"GENERAL" EDWARD LAVINE
SMITH AND MELNOTTE TWINS
SMYTHE AND HARTMAN
MARY DAVIS
MARSEILLES

BARGAIN MATINEES—15c & 25c
NIGHTS—15c, 25c, 35c and 50c

HERPOLSHEIMER'S CAFE

Dinner 11:30 to 1:30 25c
Supper 5:30 to 7:30

Also Cafeterian Style

Hot Waffles with Maple Syrup, 10c



Favorite Footwear Styles Of New York Clubmen

Our latest shipment of Regal Shoes includes ultra-fashionable models that are right now popular among the clubmen of New York and London, who are the admitted authorities on men's styles.

REGAL SHOES

correctly reproduce the smartest custom models designed for each season. Regal quarter-sizes reproduce perfect custom fit and comfort. As to the quality in these Regals, we assure you it is the recognized standard everywhere.



\$3.35
to
\$5.85

Have you bought that Memory Book? Don't forget you can get one for \$2.00 at

The Co-Op

NEAREST THE STUDENT

318 N. 11th St.

SPEIER & SIMON