

The Daily Nebraskan

Vol. VI. No. 108.

UNIVERSITY OF NEBRASKA, LINCOLN, TUESDAY, MARCH 19, 1907.

Price 5 Cents.

BIG GLEE CLUB DAY

ANNUAL CONCERT TO BE FITTING CLIMAX OF YEAR.

Tremendous Ticket Sale for Wednesday Performance—Will Give Both Matinee and Evening Concerts.

Never has Dame Fortune smiled more kindly upon the Glee and Mandolin Clubs than at the present time. With but slight indebtedness to lift, and a big advance sale of tickets, the Home Concert promises to be the greatest success ever achieved by the Club.

As to the concert itself, those who know, say that it will be the hit of the season at the theater. No little detail of the program which can help it artistically has been neglected. In fact, the boys will present as finished an entertainment as a professional company could choose to give.

The first part, as last year, will con-

MAY SING TOMORROW

Club Delinquents Will Appear in Concert.

The University Senate met yesterday at 5 in U. 106, to decide whether the delinquent members of the Glee and Mandolin clubs should be allowed to appear in the concert Wednesday night. There are seven singers and one mandolin player who failed last semester to make the required twelve hours. Notice was given the clubs only a few days ago that these men could not take part in tomorrow night's performance, and as a result the Glee Club faced the necessity of giving up the concert or of ceasing to call themselves a university organization.

In the meeting of the Senate last night it was decided because of the lateness of the notice served upon the clubs to rescind the rule until Friday, March 22, thus allowing the delinquent members to take part in the home concert and the one at Omaha Thursday night.



GEORGE JOHNSTON

The Well Known Tenor of the Nebraska Glee Club.

For the past three years Mr. Johnston has been one of the club's soloists and is too well and favorably known to need introduction.

His work is that of the finished artist and is of more than local note.

BIG TRIP ASSURED

MANAGER AGEE ANNOUNCES THE ITINERARY FOR TOUR.

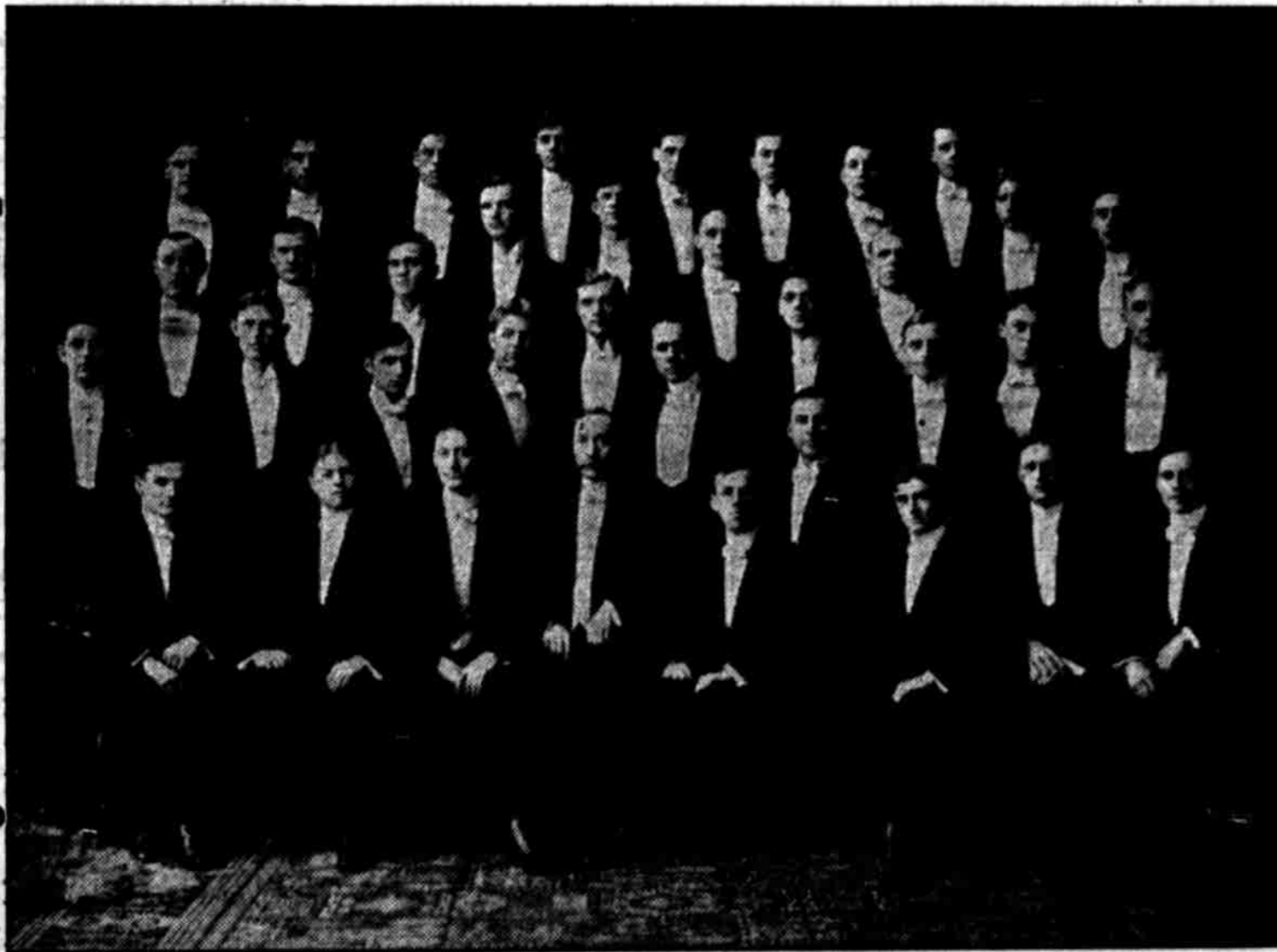
Glee Club to Cover Colorado and Wyoming—Prospects Are Bright—Eight Cities to Be Included.

After six months' strenuous work the western trip so long looked forward to by the Glee and Mandolin Clubs seems to be a reality.

Manager Agee announces the following trip: Leaving Lincoln, Wednesday, March 27th, in a private car, the club stops first at Kearney, Neb. The 28th they play at Laramie, Wyo., the location of the state university; the 30th the club plays at Boulder, Colo.; 31st at Longmont; April 1st at Denver; April 2nd at Colorado Springs; April 3rd, at Grand Junction, Colo.; April 4th at Leadville, and from there back, making a ten days' trip of great pleasure and interest to all the boys.

The number to be carried on the trip has not as yet been decided, but probably only twenty-five men will be taken on account of the heavy expense.

At all of these western cities the boys will be given receptions and side-trips to the principal points of interest in Colorado. The University of Nebraska need feel no alarm as to who shall represent it as no better equipped bunch ever started out to "boost" things for the "Uni" and "Old Nebraska."



UNIVERSITY OF NEBRASKA GLEE AND MANDOLIN CLUB.

Beginning Lowest Row—From left to right. A. M. Bunting, J. L. Stahl, G. J. Ireland, Assistant Director; B. B. Gillespie, Director; J. H. Agee, Manager; G. S. Johnston, Assistant Director; Fred Hofmann, Fred Culver, J. A. Mould, Treasurer.

Second Row—Verne Gittings, E. Blackburn, F. Kriup, Ernest Johnson, President; A. W. Samson, C. E. Parks, Pianist; M. C. French, C. W. Post, A. R. Anderson, J. W. Ketrledge.

Third Row—A. Lynn Myers, J. D. Walker, R. M. Switzler, Chas. B. Duer, Vern Westgate, S. M. Bailey, Clarence Johnson, J. R. Savin, Yale Holland.

Top Row—Geo. M. Wallace, J. Thomas, J. D. Hamilton, Don Russell, Jess Caley, Vice-President; G. A. Wolfe, Robt. Warren, Glen Venrick.

Not in the Picture—Edw. C. Johnston, D. D. Plumb, Martin Kimmel, Louis Meyer, E. Harnley, C. Chilcoat.

sist entirely of heavy numbers by the two Clubs. No little time has been spent to give the truly artistic touches to the rendition of such musical pieces as "On the Sea" and "Annie Laurie," by Dudley Buck, "Landsighting," by Grieg, and other equally difficult numbers. The individual work of the Club has been highly spoken of this year, each member having thoroly learned his part.

For the lighter end of the program, an original operatta composed by Ed. (Continued on page 3.)

Director Gillespie Speaks.

Director Gillespie has a smile something less than a yard long on his face. "That concert is certainly bound to be a winner," he says. "The boys have been working with might and main, and I have never heard better singing by a male chorus in my life. Positively, it is excellent." "Cudoma" winks very knowingly when you mention "composer" to him. "I'm agoin' to 'sprise 'em all by my skill this time,—no fake a-tall,—and the entire club feels the same way.

Black Masque.

The following girls have been elected to membership in the Black Masque: Nelle Bratt, Nelle Bridenbaugh, Mary Browne, Florence Butler, Maude Cauer, Otis Hassler, Elizabeth Kiewit, Agnes Langevin, Laura Rhoades, Abbie Stewart, Mary Strahorn, Constance Syford, Lind Trueblood.

High School Inspector A. A. Reed was called to Pickrell, Nebraska, Saturday morning by the death of his father.



J. H. AGEE

Manager of the University of Nebraska Musical Clubs.

Mr. Agee was a member of last year's club and was elected manager at close of last year's work. Altho not a student at the University this year, he has been identified with the School of Music and at the request of the Club retained the managership.

Mr. Agee expresses himself as well pleased with the outlook for a brilliant close of what has been a hard year all through.

Moving into the new Museum has been begun in earnest. Chaos now reigns in Professor Barbour's office.