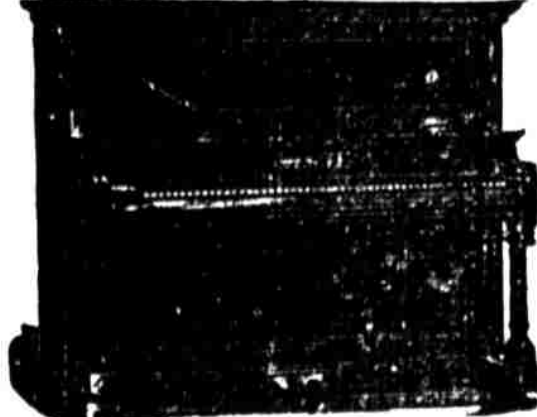


**SCHMOLLER & MUELLER**

**THE BIG PIANO HOUSE**

135 SOUTH 11th STREET



**OUR LEADERS**

- Steinway & Sons
- Schmoller & Mueller
- Steger & Sons
- Vose & Sons
- Emerson Mueller
- A. B. Chase
- Gco. Steck

And 23 others. We sell new Pianos on \$5 monthly payments

Are You Going  
—to—  
**ST. LOUIS**  
N. E. A.  
and the  
**WORLD'S FAIR?**

Never before has the N. E. A. arranged its meeting with such wonderful opportunities for the Teacher, Instructor or Professor. The route via the Burlington will be the favorite one, as it has been heretofore.



**G. W. Bonnell**  
City Passenger Agent  
Burlington Route

**Lincoln Sash, Door and Mfg Co.**

Interior Finish, Exterior Finish, Office and Store Fixtures, Water Tanks.

**University Bulletin**

TODAY—Convocation, Miss Puffer.  
MAY 6—Glee Club Concert, Oliver Theatre.  
MAY 7—Academy Faculty and Student Reception at Principal's Home, 700 No. 16th St.  
MAY 10—Company B Banquet, Lindell hotel.  
MAY 10—Recital, Memorial Hall.  
MAY 11—Convention Nebraska Photographers' Association, Art Hall.  
MAY 12—Recital, Memorial Hall.  
MAY 12—Freshman Party, Walsh Hall.  
MAY 19 & 20—Interstate Tennis, Minnesota vs. Nebraska, the Campus.  
MAY 19—South Dakota vs. Nebraska, the Campus or F. & M. Park.  
MAY 20—Pan-Hel Dance, The Auditorium.  
MAY 20—Competitive Drill Day.  
MAY 20—Interscholastic Field Day, High School Fete Day, F. & M. Park.  
MAY 21—Track Meet, Minnesota vs. Nebraska, F. & M. Park.  
MAY 24—Cadet Encampment Begins.  
JUNE 4—Annual Concert, School of Music, Memorial Hall.  
JUNE 9—Thirty-third Annual Commencement.

**Campus Gleanings.**

R. H. Searle leaves today for North Platte, where he will occupy the position of assistant foreman of the state farm at that place.

A new cattle dipping plant has been put into operation at the University farm. It differs from ordinary arrangement in that the cattle are placed in a cage and gradually submerged in the disinfecting solution.

The forestry boys who went to the forest reserve in central Nebraska write that while they are having a chilly time some nights they make up for it in the loads of fun they have in the daytime.

The students in general botany have reached the flowering plants, and are now getting at the structure and manner of growth of the little plant known as Myosurus. It is one of the very lowest types of flowering plants.

The English club will meet Saturday evening, April 7, with Miss Streeter and Miss Stetter at 1227 C street. Miss Constancer, Mr. Rice and Miss Birchall are on the program. Criticisms will be led by Mr. Brown, Miss Hopkins and Miss Green.

Professor Smith has an article in the current number of the Journal of Pedagogy on "The Evolution and Present Status of the Beginner's Latin Book." It also contains a review on Dr. Luckey's book, on "The Training of Secondary Teachers."

Mr. S. W. Dawson, who graduated from the School of Agriculture this spring, left recently for Broken Bow, where he has been given the management of the registered herd of Short-horn cattle, owned by Dr. J. G. Grenyer of that place.

Mr. Dickinson, who has been engaged in his father's bank near Liverpool, England, has come to the University farm, where he hopes to get practical information concerning the work of a farm. He hopes to be able to enter the Nebraska School of Agriculture next year.

The Union debaters will go out to Wesleyan Friday evening, May 6, to discuss the following question: "Resolved, That the South is justified in disfranchising the Negro." The Unions will have the affirmative on the question, and will be represented by Wm. Whelen, W. C. Melick and J. M. Paul.

LOST—A bunch of keys, tied with a red ribbon, on R street. Finder please leave at the executive office.

Please help the poor. Buy your cigars and tobacco of Frank DuTill, 1020 O St.

Don Cameron's lunch counter for good service.

**Woodwards**

HIGH GRADE

**CHOCOLATES AND BONBONS**

Sold Only by Harley Drug Co., 11th and O Street.



**NEW TRIANLEAVES**

Lincoln at 4:30 p. m. arriving at St. Louis next morning. Leaves St. Louis at 8:10 p. m., arriving at Lincoln at 12:15 noon.

Through Pullman Sleeper from Lincoln and electric lighted coaches.

Three trains daily between Lincoln and St. Louis.

Through connections made at St. Louis for all points east.

World's Fair Rates are now in effect and are very low. Don't be afraid to ask questions.

**F. D. Cornell, P. & T. A.**

City Ticket office S. W. Cor. 12th and O. Sta. Depot Cor. 9th and S.

Take the World's Fair Special to St. Louis.



**A Taking Idea**

We'll take you away from your custom tailor if you'll take time to try one of our "Kensington" Spring Suits. We can give you a perfect fit—the only essence of style—the finest and handsomest materials—Besides we can save you a good many dollars. Just try one of our \$18 blue black or fancy suits—if not all we claim we'll buy it back. Don't forget it there's no suit like the "Kensington"—They Fit.

**MAGEE & DEEMER**

**WEBSTER'S INTERNATIONAL DICTIONARY**

NEW EDITION JUST ISSUED  
NEW PLATES THROUGHOUT

Now Added **25,000 NEW WORDS**, Phrases, Etc.

**Rich Bindings of 2364 Pages of 5000 Illustrations**

Prepared under the supervision of W. T. Harris, Ph.D., LL.D., United States Commissioner of Education, assisted by a large corps of competent specialists.

**BETTER THAN EVER FOR GENERAL USE**

Also Webster's Collegiate Dictionary with Scottish Glossary, etc.  
"First class in quality, second class in size."

Specimen pages, etc., of both books sent on application.

G. & C. MERRIAM CO., Publishers, Springfield, Mass., U. S. A.