

The University School of Music, Just South of the Campus. You Can Enter at Any Time.

## The Pioneer Barber Shop...

Clean Linen  
Finest of Toilets  
First class Service  
W. J. WHITFORD, PROPRIETOR  
113 South 11th St., Lincoln, Neb.

## Candy for the Holidays.

Maxwell's Chocolates and Bonbons are the finest made anywhere. They're made here in Lincoln and are always fresh. You will be wanting some. Why not get the best? It costs no more than other goods of poorer quality.

## R. W. MAXWELL CO.

Makers of Good Chocolates.  
1416 O Street and 206 South 11th Street

## Legislative Gallery.

BEST OF RATES TO STUDENTS.

*Clements*

Portrait and Landscape Photographer

120 South 11th Street.  
LINCOLN, - - NEBRASKA.  
GALLERY ESTABLISHED 1871.

Every new Student  
calls on

## James Hearn

237 So. 11th street  
And has his measure taken for the

**Famous  
Kalamazoo  
Uniforms,**

Manufactured by  
The Henderson-James Co.  
Kalamazoo, Mich

## Translations

• Literal, 50c. Interlinear, \$1.50. 147 vols.

## Dictionaries

German, French, Italian, Spanish,  
Latin, Greek, \$2.00, and \$1.00.

## Completely Parsed Caesar,

Book I. Has on each page, interlinear  
translation, literal translation, and  
every word completely parsed. \$1.50.

## Completely Scanned and Parsed Aeneid, Book I. \$1.50. Ready August, 1900.

HINDS & NOBLE, Publishers,  
456-12-13-14 Cooper Institute, N.Y. City.  
Schoolbooks of all publishers at one store.

## Your Money and Important Papers

Should be kept in a safe place: \$1.25  
pays for a Safe Deposit Box for three  
months: absolutely safe from fire and  
burglars. Silverware and trunks stored  
in our Storage Vault.

## LINCOLN SAFE DEPOSIT and TRUST COMPANY,

126 North Eleventh Street.

## NOTICE.

Mittens, gloves, fountain pens,  
caps, hats, are often left and lost in  
reading room of the library. Students  
can frequently find their lost belongings  
by calling at the reference desk.

## ENGLISH 11a.

The rewritten deliberate orations  
will be due at 5:30 o'clock, Dec. 20.

My conference hours in U. 206, 304  
or 309 this week will be from 11:20 to  
12 and from 4 to 5 o'clock daily.

M. M. FOGG.

The Delian Literary Society gave a  
program to the Theophanian Society  
of Wesleyan Friday evening. After  
the program the local society entertained  
the Delians in a delightful  
manner. Refreshments were served.  
The Delians will entertain the Theophanians  
about the middle of January.

Professor E. H. Barbour addressed  
the Woman's club last week on "Geological  
Features in Nebraska."

The executive committee of the  
board of regents has approved the  
resignation of John Green who has  
been University Engineer for the  
past eighteen years. The resignation  
is the result of an assault committed  
by him on the person of Joseph De-  
Klotz, a groceryman.

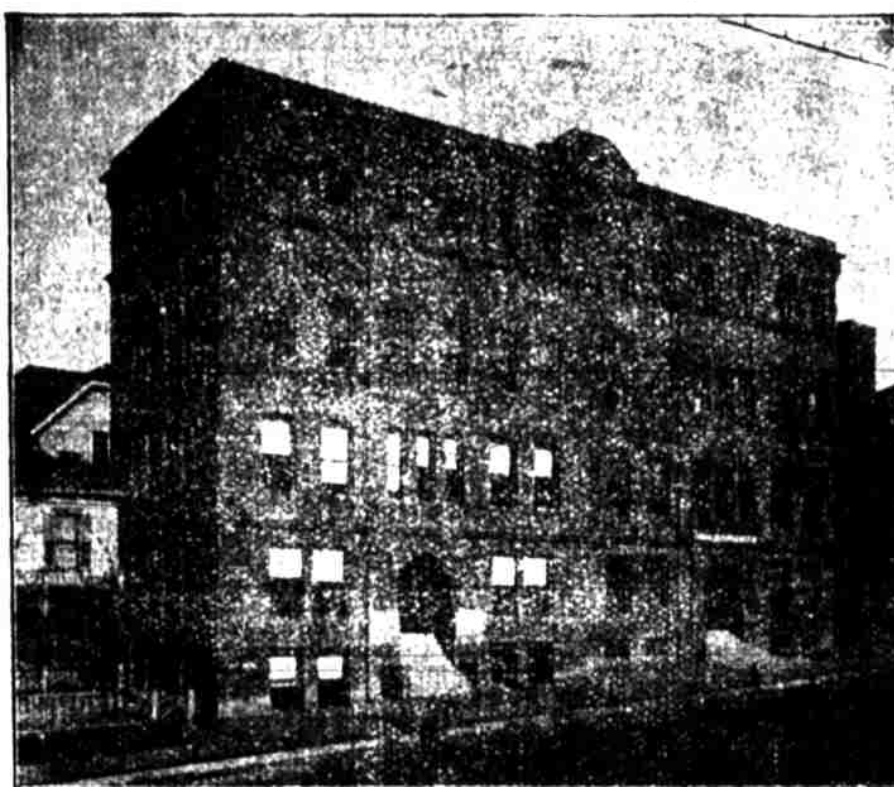
If it is hard for you to decide what  
to buy for a Christmas gift drop in  
and we will show you what your  
friends want. Wilson & Waters,  
Hatters & Furnishers, 1042 O St.

We aim to give a dollars' worth of  
shoe leather for a dollar. We give the  
best we can possibly obtain. No  
merchant can do better by you. Why  
not get your next pair of shoes of us?  
Sanderson.

X'mas numbers of English maga-  
zines with prints of famous paintings  
at the Co-Op.

The class teams in girls basket ball  
will be announced before very long.

## OMAHA MEDICAL COLLEGE



If you are expecting to enter the Medical  
Profession, write for catalogue and information  
regarding the above College. A four year's  
course with excellent laboratory and abundant chemical facilities,  
is offered. Graduates from literary colleges of approved  
standing are permitted to enter the Sophomore year. Address  
EWING BROWN, M. D., Secretary, 12th and Pacific Sts.,  
Omaha, Nebraska.

## Burlington Route

## Are you Going to California?

Call and get Printed Matter that will give you  
full information as to its Climate, Resources and  
the best way to get there.

City Ticket Office,  
Corner 10th and O Streets.  
Telephone 235.

Burlington Depot,  
7th Street, Bet P and Q.  
Telephone 25.

## ANOTHER TOURIST EXCURSION TO CALIFORNIA.

To accommodate the increasing travel  
to California, the Burlington Route  
has added to its service another  
weekly excursion, in tourist cars,  
personally conducted.

The Burlington's through car service  
to California is as follows:

**STANDARD SLEEPERS**—daily,  
Omaha, Lincoln, Hastings and Oxford  
to San Francisco, connecting at  
latter city with fast train for Los  
Angeles.

**TOURIST SLEEPERS**—personally  
conducted—every Thursday and Saturday,  
Omaha, Lincoln, Fairmont,  
Hastings and Holdrege to San Francisco  
every Wednesday and Thursday.  
Kansas City, St. Joseph, Wyomere,  
Superior and Oxford to San Francisco  
and Los Angeles.

All these cars run via Denver and  
Salt Lake City, passing the grand  
panorama of the Rockies by daylight.

If you're going to California, you  
will be interested in our new 40-page  
folder, "California Tours—1901-'02." It  
is free.

J. FRANCIS,  
General Passenger Agent,  
Omaha, Nebr.



Intercollegiate  
Bureau.

**COTTELL  
& LEONARD**

472-478 Broadway  
Albany, New York

Makers of the

## Caps, Gowns and Hoods

To the American Colleges and  
Universities. Illustrated Manual,  
sample prices, etc., on request.  
Gowns for the pulpit and bench.

## The Fast Trains are via the

## Union Pacific.



"THE OVERLAND LIMITED"  
Lv. Lincoln 7:00 a. m. ex 90n  
Ar. Cheyenne 12:30 p. m. daily  
Ar. Ogden 1:40 p. m. daily  
Ar. Salt Lake City 3:10 p. m. daily  
Ar. San Francisco 5:25 p. m. daily  
Ar. Portland 4:30 p. m. daily  
Ar. Spokane 6:15 p. m. daily  
Ar. Butte 3:50 a. m. daily  
Ar. Los Angeles 8:45 a. m. daily

"THE CALIFORNIA EXPRESS"  
Lv. Lincoln 1:45 p. m. daily  
Ar. Denver 7:30 a. m. daily  
Ar. Cheyenne 7:10 a. m. daily  
Ar. Ogden 12:30 a. m. daily  
Ar. Salt Lake City 8:45 a. m. daily  
Ar. San Francisco 8:25 a. m. daily  
Ar. Los Angeles 7:00 a. m. daily

"THE PACIFIC EXPRESS"  
Lv. Lincoln 1:45 p. m. daily  
Ar. Denver 1:40 p. m. daily  
Ar. Cheyenne 12:30 p. m. daily  
Ar. Ogden 7:30 a. m. daily  
Ar. Salt Lake City 9:25 a. m. daily  
Ar. Butte 5:20 p. m. daily  
Ar. San Francisco 4:25 p. m. daily  
Ar. Portland 9:10 a. m. daily  
Ar. Spokane 9:50 a. m. daily  
Ar. Los Angeles 8:45 a. m. daily

For full information call on or address  
E. B. SLOSSON, Agent.