

E. M. CAMPBELL.

EDITOR CONSERVATIVE:

I am in receipt of a letter, requesting me to furnish a letter to your paper, of which I am a reader, stating what I have done and am doing under the present industrial and social conditions. I am glad of the opportunity to participate in the articles you are to publish, as to a young man's chances to make his way in the world.

Upon leaving school, eleven years ago, and at your suggestion and with Mr. Brown's permission, I was enabled to enter the employ of the C. B. & Q. R. R. Co., and at the end of three years, I shifted to other fields, which proved all but successful, owing to the panicky times, during which it was almost impossible to make any advancement, as there was a general curtailment in all lines of business. Four years ago, I reentered the employ of the C. B. & Q. R. R. Co., under Mr. Brown, and since then I have been enabled to make a slow and steady advance, but to do this I have applied myself closely, endeavoring at all times to thoroughly understand whatever I was doing, realizing it would be necessary to advancement, and that opportunities would be offered, as business was sure to increase and will continue to do so, since the policy of our government is sufficiently settled to give confidence to capital, with which our chances lie.

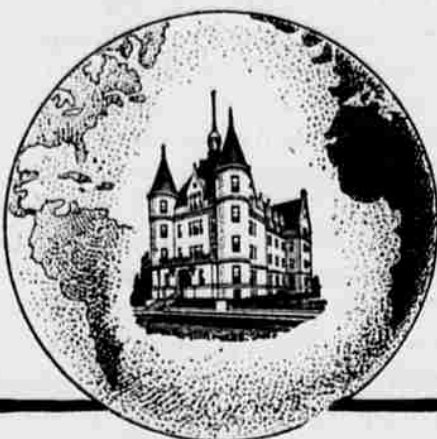
When starting in life, if the young man enters with a will to excel in whatever he chooses, and will stick to it, unceasingly, he will surely win out, as the opportunities for such a young man are better than ever before, as everything has been brought to such a high state that the services of the best are always in demand.

Chicago, Ill., July 22, 1901.

### It isn't the Cook's Fault, It isn't your Grocer's Fault,

that the bulk coffee you just purchased turns out to be different from the "same kind" bought before. Coffee purchased in bulk is sure to vary.

The sealed package in which LION COFFEE is sold insures uniform flavor and strength. It also keeps the coffee fresh and insures absolute purity.



### The World is Our School Room

Anywhere you can get a technical education **By Mail** and increase your earning capacity. You can earn while learning. Write for free circular:

#### Salaried Positions for Learners

We teach by mail Mechanical, Steam, Electrical, Civil and Mining Engineering; Shop and Foundry Practice; Mechanical Drawing; Architecture; Architectural Drawing; Plumbing, Heating and Ventilation; Sheet Metal Work; Telephony; Telegraphy; Chemistry; Ornamental Design; Lettering; Book-keeping; Stenography; Teaching; English Branches; Locomotive Running (for engineers and firemen only); Electrotherapeutics (for physicians and nurses only). Our students succeed because they use I. C. S. textbooks. Schools are open all summer. State subject in which interested.

International Correspondence Schools,  
Box 1296, Scranton, Pa.



A good looking horse and poor looking harness is the worst kind of a combination.

### Eureka Harness Oil

not only makes the harness and the horse look better, but makes the leather soft and pliable, puts it in condition to last—twice as long as it ordinarily would.

Sold everywhere in cans—all sizes. Made by

STANDARD  
OIL CO.

Give  
Your  
Horse a  
Chance!

## INDIANA, ILLINOIS AND IOWA RAILROAD.

### THE CONNECTING TRUNK LINE,

EXTENDS FROM ST. JOSEPH, MICH.  
TO FULTON, ILL., THROUGH SOUTH  
BEND, IND., KANKAKEE, ILL.,  
STREATOR, ILL.

### CONNECTIONS AND JUNCTION POINTS.

| Direct Connections.     | Junction Points |
|-------------------------|-----------------|
| A. T. & S. F. Ry.....   | Streator, Ill.  |
| B. & O. R. R.....       | Walkerton, Ind. |
| B. C. R. & N. Ry.....   | Clinton, Ia.    |
| Chicago & Alton Ry..... | Streator, Ill.  |
| Chicago & Alton Ry..... | Dwight, Ill.    |

|                            |                    |
|----------------------------|--------------------|
| Chic. Burl. & Quincy R. R. | Streator, Ill.     |
|                            | Zearing, Ill.      |
|                            | Fulton, Ill.       |
|                            | East Clinton, Ill. |
|                            | Walnut, Ill.       |
|                            | Denrock, Ill.      |

|   |                    |
|---|--------------------|
| Clev. Cin. Chic. & St. L. Ry..                  | Kankakee, Ill.     |
| Chicago & East. Ill. R. R.....                  | Momence, Ill.      |
| Chicago & East. Ill. R. R.....                  | Wheatfield, Ind.   |
| Chicago, Ind. & Louisville Ry. Co. (Monon)..... | Shelby, Ind.       |
|   | San Pierre, Ind.   |
| Chicago & Erie R. R.....                        | North Judson, Ind. |

|                          |                    |
|--------------------------|--------------------|
| C. M. & St. P. Ry.....   | Fulton, Ill.       |
|                          | East Clinton, Ill. |
|                          | Clinton, Ia.       |
| Chicago & Northwest. Ry. | Fulton, Ill.       |
|                          | East Clinton, Ill. |
|                          | Churchill, Ill.    |
|                          | Clinton, Ia.       |

|                                |                  |
|--------------------------------|------------------|
| Chicago & So. Bend Ry.....     | South Bend, Ind. |
| C. R. I. & P. Ry.....          | De Pue, Ind.     |
| Chic. & Wabash Val. R. R....   | Kersey, Ind.     |
| Davenport, R. I. & N. W. Ry... | Clinton, Ia.     |
| Grand Trunk Ry. System....     | South Bend, Ind. |
| Illinois Central R. R.....     | Kankakee, Ill.   |
|                                | Loctant, Ill.    |

|                          |                  |
|--------------------------|------------------|
| Indiana Northern Ry..... | South Bend, Ind. |
|--------------------------|------------------|

|                            |                  |
|----------------------------|------------------|
| Lake Shore & Mich. So. Ry. | South Bend, Ind. |
|                            | Rugby, Ind.      |

|                              |                 |
|------------------------------|-----------------|
| Lake Erie & Western R. R.... | Walkerton, Ind. |
|------------------------------|-----------------|

|                            |                  |
|----------------------------|------------------|
| Michigan Central R. R..... | South Bend, Ind. |
|                            | Gallien, Mich.   |

|                             |                    |
|-----------------------------|--------------------|
| N. Y. C. & St. L. R. R..... | Knox, Ind.         |
| Pere Marquette Ry.....      | St. Joseph, Mich.  |
| Lake Mich. Boat Lines.....  | St. Joseph, Mich.  |
| P. C. C. & St. L.....       | North Judson, Ind. |
| P. F. W. & C. Ry.....       | Hamlet, Ind.       |
| Vandalia Line.....          | South Bend, Ind.   |

|                  |                   |
|------------------|-------------------|
| Wabash R. R..... | No. Liberty, Ind. |
|                  | Reddick, Ill.     |

Operating Fast Freight Service between the East and West, North and South, in connection with all the principal railroad systems and fast freight lines, thus avoiding the delays to which traffic passing through Chicago is subjected.

General Offices,  
565 The Rookery, Chicago, Ill.

|                   |               |
|-------------------|---------------|
| T. P. SHONTS,     | GEO. H. ROSS, |
| Pres. & Gen. Mgr. | Traffic Mgr.  |

ROCKWELL KING,  
President.

MARK MORTON,  
V. President,

JOY MORTON,  
Treasurer.

RICHARD M. BIRDSALL,  
Secretary.

## Western Cold Storage Company.

LARGEST COLD STORAGE HOUSE IN THE WORLD.

Nebraska City, Nebraska, Branch.

Capacity 5,000 Cars.

Do a general cold storage and freezing business, and make liberal advances on eggs, butter, cheese and poultry stored, at a low rate of interest.

Correspondence Solicited.

MAIN OFFICE,  
39 N. STATE ST., CHICAGO.

W. A. RANDALL, RESIDENT  
MANAGER.