

CHEAPER THAN EVER

—TO—

COLORADO AND UTAH

DAILY JUNE 18TH TO
SEPT. 10TH, 1901.

VIA THE

GREAT
ROCK ISLAND
ROUTE

Round Trip Rates

—FROM—

Missouri River Points to Denver, Colorado
Springs and Pueblo.

\$15.00 July 1 to 9 \$19.00 June 18 to 30
Sept. 1 to 10 July 10 to Aug. 31

Similar reduced Rates on same dates
to other Colorado and Utah Tourist
Points.

Rates from other points on Rock Is-
land Route proportionately lower on
same dates of sale.

Return Limit October 31, 1901.

THE SUPERB TRAIN

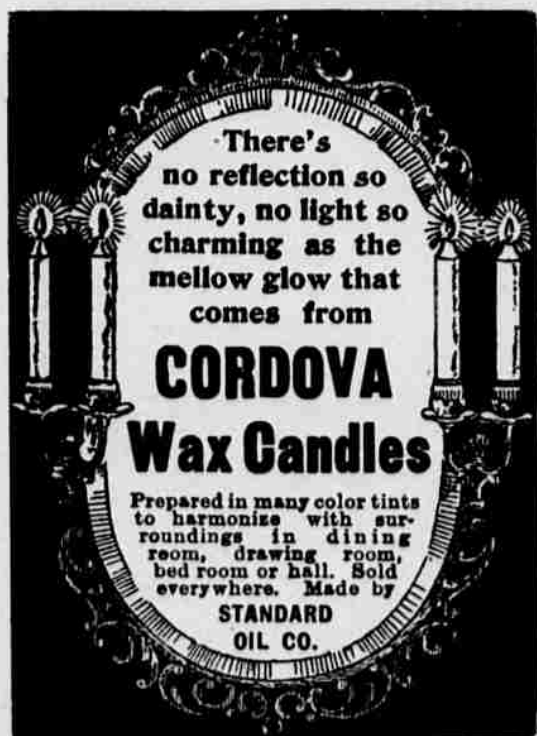
COLORADO FLYER

Leave Kansas City daily at 6.30 p. m., Omaha
5.20 p. m., St. Joseph 5.00 p. m., arriving Denver
11.00 a. m., Colorado Springs (Manitou) 10.35 a.
m., Pueblo 11.50 a. m.

Write for details and Colorado literature.

E. W. THOMPSON, A. G. P. A. Topeka, Kas.

JOHN SEBASTIAN, G. P. A., Chicago.



Epworth League California Excursions

Account Fifth International Convention of Epworth League,
San Francisco, July 18-21.

San Francisco is an ideal summer resort—weather always cool.

Trip thither in summer, across high tablelands of New Mexico
and Arizona is pleasant—air bracing, no oppressive heat or dust.

Best way to go is via Santa Fe Route, only line under one man-
agement, Chicago to San Francisco; three daily trains to California,
Fred Harvey meal service, personally conducted excursions.

On the way visit Indian pueblos, and petrified forest, also Grand
Cañon of Arizona—world's greatest scenic spectacle, now easily ac-
cessible.

See Southern California—its noted resort hotels, idyllic valleys,
majestic mountains, smooth beaches and lovely islands, its old mis-
sions, its semi-tropic fruits and flowers, its great oil wells. This im-
portant section reached via Santa Fe Route cheaper than most other
lines and with greater comfort.

Extremely low round-trip rates; liberal stop-over privileges; choice
of routes returning; open to everybody. All ticket agents sell via
Santa Fe Route. Descriptive literature on request.

Address Gen. Pass. Office, A. T. & S. F. R'y, Chicago.

Santa Fe Route.

ARGO Gloss Starch

Is the whitest, purest and strongest of all Starches; is peculiarly
adapted to fine Fabrics and Laces, and gives to all Clothes a beau-
tiful, snow-white Satiny Finish that is so much desired and ad-
mired.

A Pure Starch is a White Starch, and a White Starch (being
pure) is a Strong Starch.

ARGO STARCH satisfies every demand, causes no injury,
and is perfect for all uses.

ARGO STARCH is packed in all styles and sizes of pack-
ages and can be obtained of all Leading Grocers.

National Starch Co.

NEBRASKA CITY, NEB.