

ARGO

Gloss Starch

Is the whitest, purest and strongest of all Starches; is peculiarly adapted to fine Fabrics and Laces, and gives to all Clothes a beautiful, snow-white Satiny Finish that is so much desired and admired.

A Pure Starch is a White Starch, and a White Starch (being pure) is a Strong Starch.

Argo Starch satisfies every demand, causes no injury, and is perfect for all uses.

Argo Starch is packed in all styles and sizes of packages and can be obtained of all Leading Grocers.

National Starch Company,

NEBRASKA CITY, NEB.

FOLLOW YOUR FADS IN CALIFORNIA

Golf, tennis, polo, bicycling, fishing, shooting, photographing, sailing, mountain climbing, sea bathing.

Outdoor sports in this captivating climate are uninterrupted by winter weather.

Exhibition golf games, at California resorts by David Bell and Willie Smith, U. S. open champions.

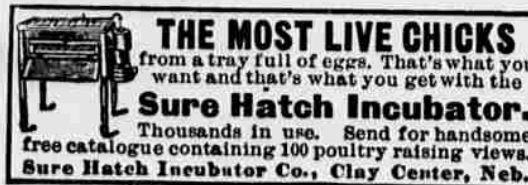
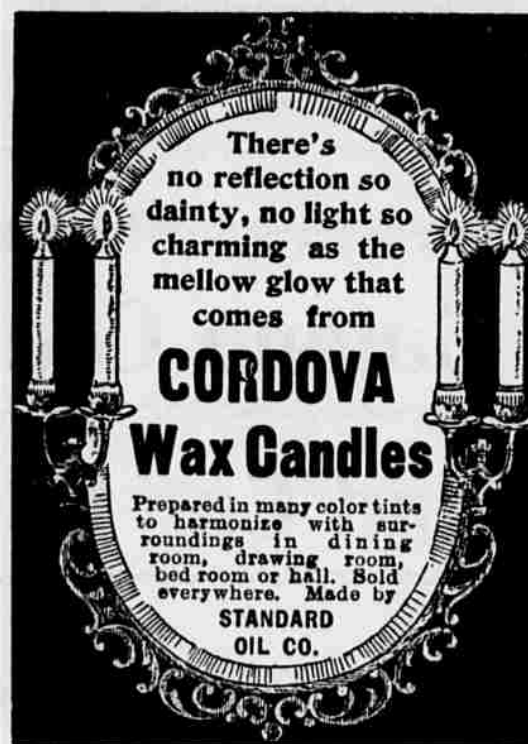
Take the **California Limited** via **Santa Fe Route**.

Ask for illustrated pamphlets.

General Passenger Office,
The Atchison, Topeka & Santa Fe Railway,
CHICAGO.

ORNAMENTS STATION GROUNDS.

Officers of several of the big railroad systems are considering plans to induce agents and others concerned to make stronger efforts to beautify station grounds and buildings. During the past year or two particular attention has been given to making the stations more attractive. The Burlington has accomplished a great deal in this direction. Last year it issued orders to all employees that the grounds and buildings adjacent to the company's right-of-way must present a neat and attractive appearance. The company's gardener gave his especial attention to beautifying the suburban stations for forty miles out of Chicago. Before last summer closed, switch shanties, tool houses, yard offices and round houses had been prettily covered with running vines and the grounds about each building converted into fine lawns over which shrubbery had been planted. During the coming spring and summer this work will be greatly extended, and in time the Burlington expects to have the most ornamental station grounds in the west.



WEARE COMMISSION COMPANY
Grains, Provisions,
Stocks and Bonds.

Old Colony Building.

CHICAGO.