

ARGO

Gloss Starch

Is the whitest, purest and strongest of all Starches; is peculiarly adapted to fine Fabrics and Laces, and gives to all Clothes a beautiful, snow-white Satiny Finish that is so much desired and admired.

A Pure Starch is a White Starch, and a White Starch (being pure) is a Strong Starch.

Argo Starch satisfies every demand, causes no injury, and is perfect for all uses.

Argo Starch is packed in all styles and sizes of packages and can be obtained of all Leading Grocers.

National Starch Company,

NEBRASKA CITY, NEB.

A FASHIONABLE MIGRATION TO CALIFORNIA

Every winter, to enjoy lawn fetes, balls and novel entertainments of the smart set.

Lavish hospitality here creates a metropolitan atmosphere in semi-tropic gardens.

Persons you like to meet—in resort hotels and on

The California Limited

Daily, Chicago to Los Angeles and San Francisco,
via Kansas City

SANTA FE ROUTE.

For illustrated pamphlets, address

General Passenger Office,
The Atchison, Topeka & Santa Fe Railway,
TOPEKA.

MID-WINTER IN CALIFORNIA.

If you have never been to California, you have no idea of how agreeably you can pass the winter there. The weather is perfect—not so warm as to be enervating nor so cold as to be uncomfortable. Rain falls but seldom, yet the hills and valleys are perennially green.

Everybody lives out of doors. Everybody walks, and drives, and goes a-pick-nicking in January and February in just about the same fashion as northerners do in July and August.

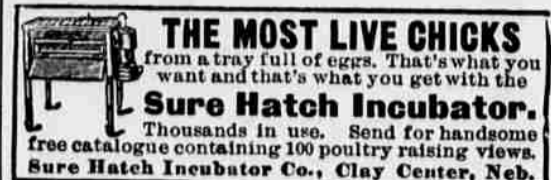
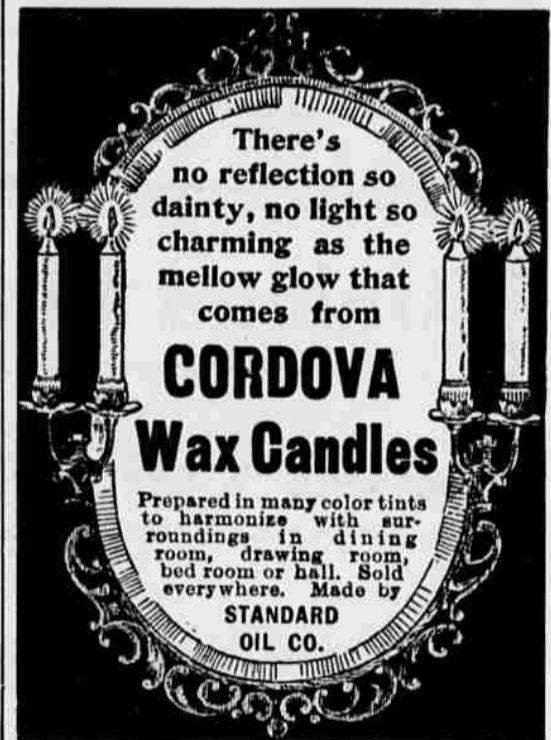
The trip to California costs comparatively little, takes only a few days' time and involves no hardship of any kind. If you take the Burlington Route you will reach California three days after you leave Omaha. No changes of cars are necessary and the cost of trip—including railroad fare, berth in tourist car, meals, etc., is about \$50.

Thro' tourist cars for Los Angeles leave Omaha every Tuesday morning and evening and every Thursday afternoon.

Information on request.

"California," a beautifully illustrated book of 72 pages, mailed on receipt of six cents in stamps.

J. FRANCIS, General Passenger Agent,
Omaha, Neb.



WEARE COMMISSION COMPANY

Grains, Provisions,
Stocks and Bonds.

Old Colony Building.

CHICAGO.