

# ARGO

## Gloss Starch

Is the whitest, purest and strongest of all Starches; is peculiarly adapted to fine Fabrics and Laces, and gives to all Clothes a beautiful, snow-white Satiny Finish that is so much desired and admired.

A Pure Starch is a White Starch, and a White Starch (being pure) is a Strong Starch.

**Argo Starch** satisfies every demand, causes no injury, and is perfect for all uses.

**Argo Starch** is packed in all styles and sizes of packages and can be obtained of all Leading Grocers.

### National Starch Company,

NEBRASKA CITY, NEB.

It  
Costs You  
Nothing Extra

To patronize the personally conducted excursions to California via the Santa Fe Route.

A special conductor is employed by the Railroad Company, to make its patrons comfortable.

Details of service given on request.

**T. A. GRADY,**

Manager California Tourist Service,

The Atchison, Topeka & Santa Fe Railway Co.,

109 Adams St., Chicago.

**WEARE COMMISSION COMPANY**

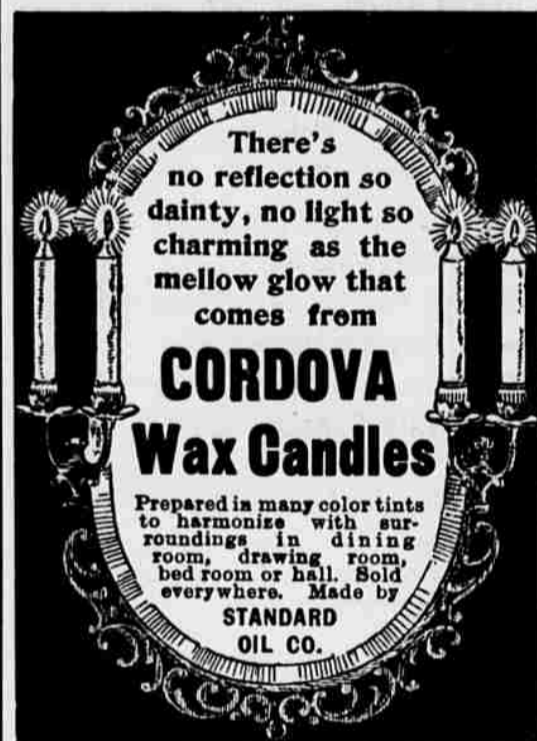
Grains, Provisions,  
Stocks and Bonds.

Old Colony Building.

CHICAGO.



**Morton Printing  
Company,**  
Printers, Publishers.



**Don't Be Deceived!**

"Read all sides of the Money Question before you vote. "The Library of Live Questions," ten books, 1452 pages, is what you need, Written by Republicans, Democrats, Populists and Socialists. Publisher's price \$1.85; ours only \$1.

**"Western Supply House,"**

Nebraska City, Neb.

**Special Clubbing Offer.**

During the presidential campaign THE CONSERVATIVE may be secured in clubs of five at the rate of one dollar per year for each subscriber. Address:

**THE CONSERVATIVE,**

Nebraska City, Neb.