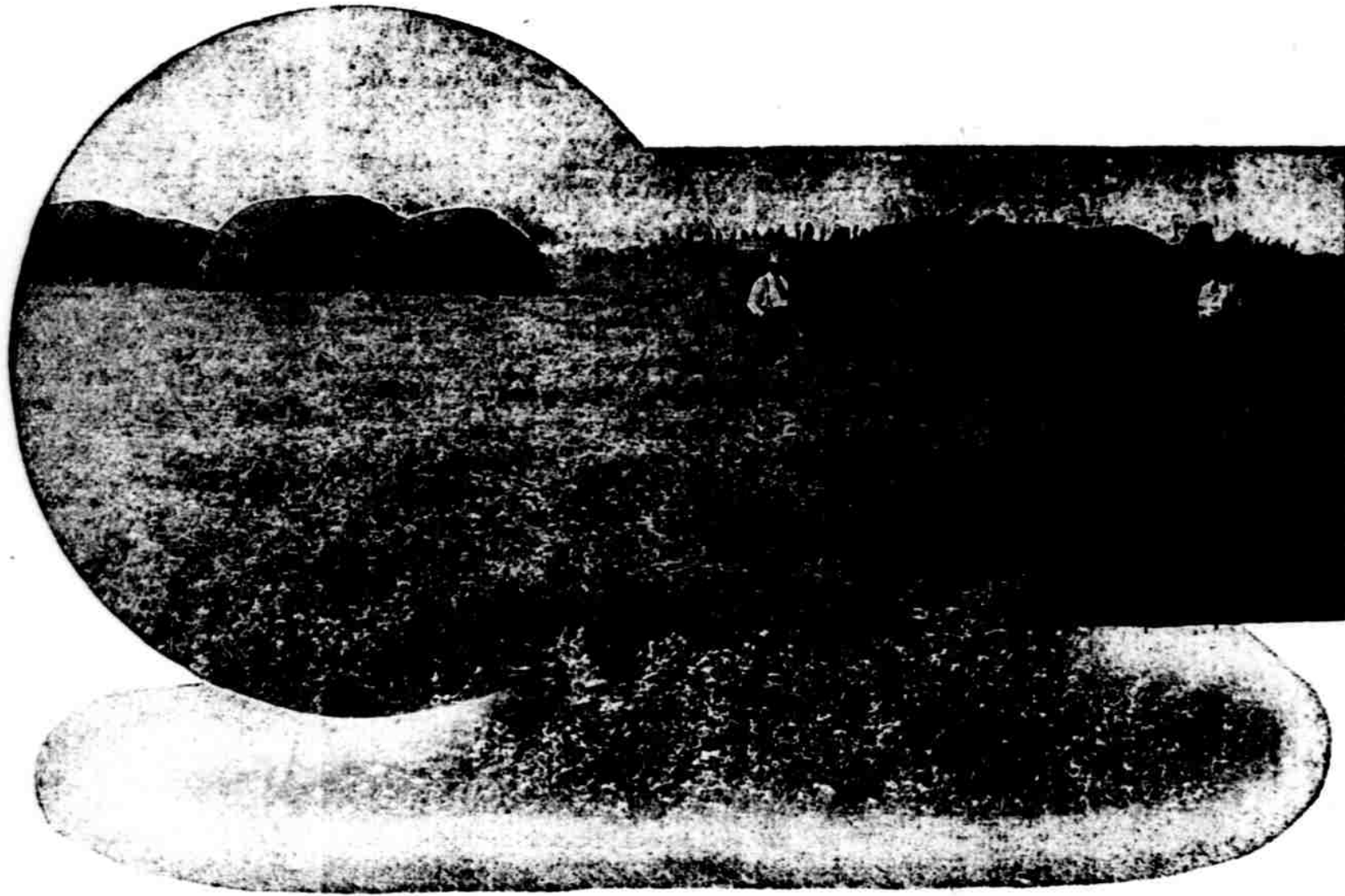


THE HARVEST TIME IS OVER



The big rush of the farmer's life is a thing of the past and the granaries and bins are loaded with the golden grain. Golden is used advisedly for is not the loaded bin the same to the successful farmer as real gold? The time of relaxation has arrived, the period when the farmer can sit down and consider the problems which he must confront, without the worry or the work of harvest to interfere, the time which we have waited for to have a little talk with you in regard to a proposition that we believe is worthy your careful consideration. In the several issues of the past we have told you about the FINNEY COUNTY, KANSAS, lands that we have for sale. Perhaps you have read our little talks and thrown the papers aside, remembering with prejudiced minds the stories you have heard of "Bleeding Kansas," and believing our statements to be nothing but the talk of land men interested in attracting the illusive dollars into their own pockets. Because you may have so believed, we have secured this week several photographs of actual scenes in this unusually productive part of irrigated Kansas.

PHOTOGRAPHS DO NOT TELL LIES and as you look at the cuts that we are showing this week, realize that before the pictures were possible, the scenes depicted had to be real.

Perhaps
It Would
Interest You

IF YOU KNEW that these scenes are not unusual, but only typical of what you would find on every hand, were you to visit Finney county, Kansas.

IF YOU COULD see several dozen photographs of similar scenes from this interesting county, and know that prosperity is evidenced in each one.

TO SEE THE government statistics in regard to the rain fall for the past thirteen years, the increase during this time of the population, amount of different products raised, the increase in property values, the increase in the wealth generally and the advancing payroll of the constantly increasing laboring class.

TO KNOW THAT Finney county is the one garden spot of Kansas, a place where irrigation has made crops sure and prosperity abundant. A land where

crop failures are unknown and where the meaning of drouth and famine is a thing never thought of. Irrigation is real crop insurance where it is successful. The photographs prove it a success in Finney county. In our office we have the photographs, the statistics compiled by the government and literature to prove the truth of our assertions.



A Great Opportunity will be given to you

To See this Country for Yourself on

Tuesday, July 18th,

When we will take several interested parties with us to inspect this land. You owe it to yourself to make this trip and we cordially invite you to come to our office, allow us to show you our photographs, literature and statistics and then be one of our party.

We have for quick acceptance a big bargain in the shape of an especially fine ranch in Finney County, Kansas, 2080 acres, all in one body,—all the very best of tillable land—except about 200 acres along the Pawnee Creek, but even this slightly rough land is well grassed; abundance of living water; good five-room house; extra large stock barn; finely equipped poultry house, large enough to accommodate 2000 fowls; good granary; other serviceable out-buildings; wells and



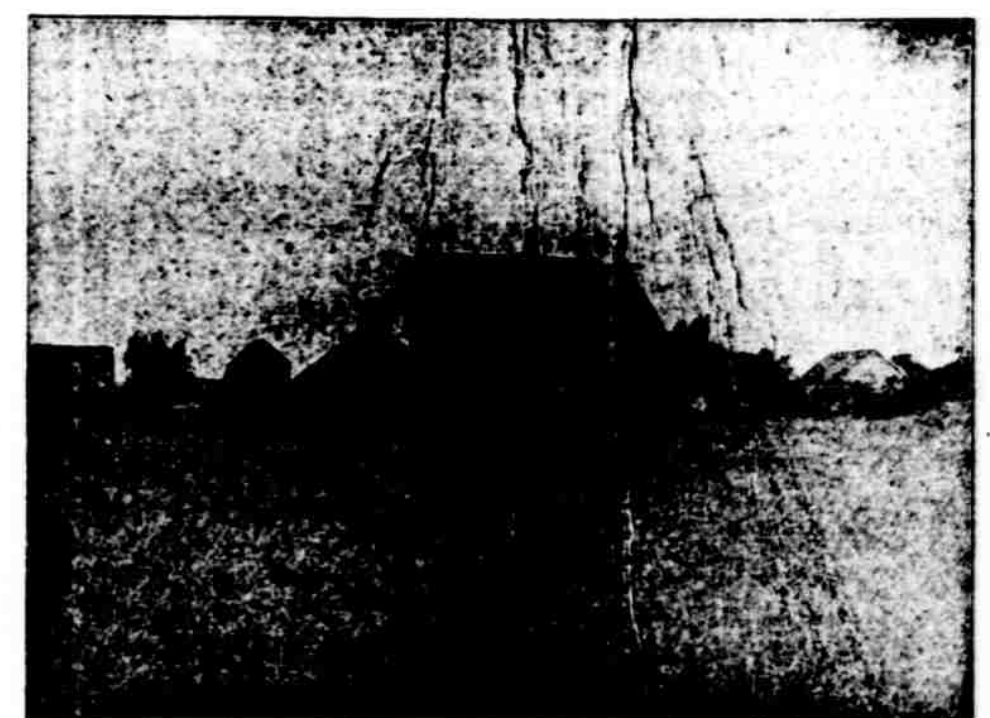
wind mill; soil deep, dark, porous and rich—none better to be found anywhere in the world; over 200 acres of fine, well-set Alfalfa, now growing on the ranch, which is worth alone, in cash, and will pay good dividends on, more than is being asked for the entire tract of land.

If taken quick, we can sell for \$18.50 per acre, \$38,480.00, a snap.

ANOTHER SNAP

150 acres all under irrigation—fenced and cross-fenced; modern eleven room house; one mile from Garden City; large orchard, plenty of shade trees, barn and corrals—other outbuildings.

PRICE—If taken at once \$87.50 per acre. Good terms.



KARR & NEWLON

514 West 13th Street

COLUMBUS,

NEBRASKA