

Farm Implements ^A Cost

We will close out our line of

**Manure Spreaders, Corn Planters,
Gang Plows, Listers, John Deere Rid-
ing Attachments and Freight Wagons**

at cost. You will save money by look-
ing over our line of

**Breaking Plows, Stubble Plows and
Cultivators.**

We sell the Superior Drill and have a
full line of the Rock Island Plow Goods.
We are satisfied with a small profit and
will close out our John Deere goods at
cost. Save money by getting our prices
before purchasing.

LUDWIG LUMBER CO.,
Valentine, Nebraska

Base Ball Supplies

We carry the lines of

**A. G. Spalding & Bros.
A. J. Reach Co.
Victor Sporting Goods Co.**

Baseball Shoes, Bats, Balls, Uniforms, Masks, Gloves,
Mitts, Basket Balls and supplies, Tennis Rackets, Balls
and Nets. A classy assortment of Pennants. In fact
we carry the only complete line of sporting goods in the
city. Send us your mail orders.

FISCHER'S HARDWARE

Pool and Billiard Hall

**Cigars and
Soft Drinks**

JOHN G. STETTER - PROP.

Rosebud Stage Line

D. A. WHIPPLE, Propr.

Valentine Headquarters at the Chicago House
Rosebud " " " Rosebud Hotel

Leave Valentine at 8 o'clock every morning,
Sundays excepted.
Arrive at Rosebud at 2 o'clock p. m.
Leave Rosebud at 8 o'clock every morning,
Sundays excepted.
Arrive at Valentine at 2 o'clock p. m.
Dinner at Britt at 11 o'clock a. m.
Special attention to passengers, baggage and
express or packages.
Leave orders at headquarters or at the Red
Front store.

D. A. Whipple.

GRANT BOYER,

CARPENTER & BUILDER.

All kinds of wood work done to order. Stock tanks made in all sizes.
Residence and shop one block south of passenger depot.

Valentine, Nebraska
References: My Many Customers.

VALENTINE DEMOCRAT

**I. M. RICE - Editor and Propr.
F. Wright, Foreman.**

A Weekly Newspaper published every Thurs-
day at Valentine, Nebraska.

Subscription - \$1.50 Per Year.
Local Notices, 5c per line per issue

Entered at the Postoffice at Valentine, Neb.,
for transmission through the mails, as second
class matter.

Thursday, August 4, 1910.

Announcement

I hereby announce myself to the
voters of Cherry county, Nebr.,
as a candidate for the nomination
to the office of County Attorney
on the Democratic ticket, at the
primaries to be held on Tuesday,
August 16, 1910.

C. A. RUBY,
Valentine, Neb.



W. J. TAYLOR

Candidate for the Democratic and Populist
Nomination for Governor

This is a year of peace, yet it
cost this government \$130,000,000
for the maintenance of our navy.
—Rushville Standard.

Taylor has a record beginning in
the Nebraska legislature that is a
credit to any man. He was an eye
sore to the corporation suckers who
infested that body. —Plattsmouth
Herald.

We hope to see every Populist
and Democrat in Sheridan county
cast their votes at the primary
for Ashton C. Shallenberger for
governor and Gilbert M. Hitch-
cock for U. S. Senator. —Rushville
Standard.

We were surprised at Edgar
Howard's writeup of the democra-
tic state convention in his Colum-
bus Telegram last week. Seemed
to be about half sore all over, or 49
per cent coming and 51 per cent
going. Take something for your
stomach, Bro. Howard, and come
out of it.

W. R. Patrick, candidate for gov-
ernor on the democratic ticket, has
withdrawn his name from the pri-
maries with excuses profligate and
conflicting, realizing perhaps that
he had no support. This practically
assures the renomination of Gov.
Shallenberger though the Dahlman-
ites claim it will be to Dahlman's
advantage as they expect Patrick's
following, as both were sore at the
governor. Queer situation.

Those who have everything at
stake can least afford to go into a
conflict. Better always a com-
promise than a fight to lose. The
South rushed into a conflict in 1860.
A. Lincoln's assassination though
for bitter revenge cost the south-
ern states their freedom for years.
The reconstruction of Johnson's
time might have all been avoided
were it not for this. Though
Johnson followed Lincoln's plan
it was not acceptable to the senate.
Lincoln could have done what
Johnson tried to do and we doubt
not that he would have held that
the southern states were not sepa-
rated from the union in their un-
lawful acts of secession.

It is not our purpose to stir up
dissension in the ranks of the dem-
ocratic party. We want another
administration good as the present.
Those who are contending for
more may have to take less. Let
us get together and unite in the
custom generally accorded a wor-
thy governor by a re-election. He
is entitled to it. If he goes down

to defeat because of this strife and
contention the blame will rest up-
on Dahlman, Bryan, Metcalfe
and Patrick, who can't easily be ex-
cused for the dissension they have
stirred up within our party. If
they take away Shallenberger,
who can they give us to take his
place? Who else can be elected
and who could do as well as Gov.
Shallenberger has done?

THE ISSUE

When George Sheldon found
himself defeated in November, 1908,
he was sorely disappointed. He felt
confident of success and had assur-
ances from friends that his cam-
paign had been conducted along
lines to harmonize both the tem-
perance or prohibition vote and the
saloon element, with which he had
had an understanding. Later
though in the campaign some of
the saloon men of Omaha, becoming
alarmed at the strength of Shallen-
berger, feared they would be given
the worst of it if he should be elect-
ed governor and should learn that
he got no support from their quar-
ter. They switched, knowing they
were due to support Sheldon but
they, like rats leaving a sinking
ship, were trying to save their own
hides and risked a jump overboard
and rushed into the Shallenberger
band wagon with such gusto and
noise that everybody was made to
know it. They wanted the people
to know it, wanted the democratic
leaders to know it to curry favor.
They saw the handwriting upon the
wall. The saloon element is not
slow to see the trend of public opin-
ion and they wanted to make room
for their bunch of fellows to be re-
cognized and about one-half of them
voted for Shallenberger. Sheldon
got the other half. But that did
not suit him. He was defeated and
blamed all because of the half that
didn't vote for him. In a rage he
wanted to call the legislature to-
gether and would have done so if he
could have secured sufficient prom-
ises, but in this he failed. This move-
ment put the republican party to
the bad with the saloon forces who
had immediately burned their
bridges behind them when Sheldon
began sounding the legislature.
They were loud in their acclaim for
Shallenberger, who owed them but
little for their half hearted support
but he sought not to injure nor
protect them. As governor he did his
duty unto all as citizens. When the
eight o'clock closing law was placed
before him for his approval he was
visited by those in his favor by great
numbers and almost threatened by
those whom it would peculiarly ef-
fect in their business. Great throngs
waited upon him and demanded to
be heard. He heard them. To those
opposed to the bill he could not say:
"You are not entitled to speak upon
this question" nor could he refuse
them an audience to present views
they might have of which he had
not considered. Nor could he re-
fuse to listen to the voices of those
who represented the homes, the
mothers who waited for father to
come, the children who with half
fed stomachs, saddened eyes, and
burdened hearts, knew not how to
ask for protection.

Ex-governor Poynter undertook
the task of pleading for the loved
ones. He had been governor of
this state and sought to counteract
the opposite influences. He pleaded
with all his eloquence and power
and fell dead as he closed his plea.
It was a touching scene. Who would
reopen such a campaign by con-
demning Gov. Shallenberger for
signing the bill? Who but the
greedy for gain would ever question
his action or motive in signing the
bill? It was a sacred hour that
should remind every campaigner,
voter and citizen in the state that
Governor Shallenberger did right.
And right here let me add that
if he had not signed that bill the
cry would have been taken up
like John Brown of earlier days
and the forfeit would be every
saloon in the state. Why not be
satisfied and let well enough alone?
Dahlman is taking the one ex-
treme and Bryan the other. Gov.
Shallenberger is entitled to a re-
nomination. Has made a faith-
ful governor in whom we can place
our confidence that all will be well
in this our beloved state with his
guiding hand in the ship of state.
Let us be right.

OUR WASHINGTON LETTER

(Special Correspondent)

Protection Makes Politics a Business
Proposition

In the last Congressional elec-
tion for instance, the tariff trusts
spent large sums of money to
bring about the election of candi-
dates who had secretly or other-
wise pledged themselves to revis-
ion upward.

These contributions to the re-
publican campaign fund were in-
vestments in every sense of the
word. The trusts figured that if
republicans were elected the tariff
on the particular commodities in
which they dealt would be kept
sufficiently high to bar out competi-
tion and assure them monopolies
on American markets.

With this end in view the tariff
trusts and combination of manu-
facturers contributed liberally to
republican campaign funds.

The expenditure of this tainted
money enabled the republicans to
dominate congress. The tariff
was revised upward. The manu-
facturers were given their monop-
olies. Prices were boosted.

The result is that the people are
now repaying to the tariff trusts,
in increased prices, not only the
amounts invested as contributions
to the campaign fund, but they
are also paying a profit varying
from 100 to 1000 per cent beside.

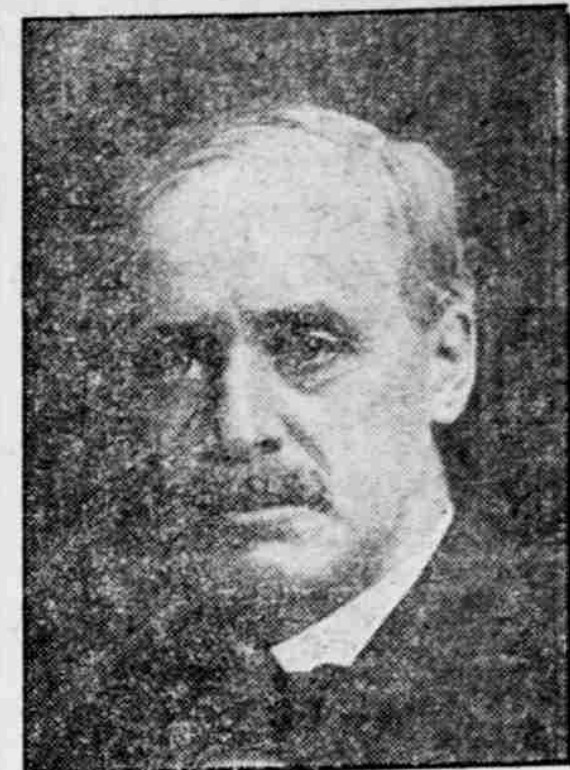
And in the meantime the big
corporate interests have taken the
reigns of government out of the
hands of the people, into their
own, for safe keeping. Such is
the milk in the protection cocoanut.

Government By Money

It cost Joseph C. Sibley \$40,-
698.83 to win the republican nom-
ination for Congress in the Twen-
ty-eighth district of Pennsylvania.
Mr. Sibley received 10,446 votes
at the primaries, and each vote re-
presented an expenditure of nearly
\$4. As his plurality was only
689 it is fair to say that his nomi-
nation was brought about by the
mere power of money.

At the primaries in the Thir-
teenth district of Pennsylvania
John Dalzell spent \$9,200, most
of which was contributed by pro-
tected manufacturers. The com-
bined expenditures of Sibley and
Dalzell in these two districts were
nearly \$50,000. Their combined
salaries as representatives in con-
gress for two years will be only
\$30,000. Their nominations,
therefore, cost almost \$20,000
more than the emoluments of their
office, exclusive of mileage and
stationary allowances.

(Continued on Page 8)



EX-SUPREME JUDGE JAMES R. DEAN
BROKEN BOW, NEB.

Candidate for Democratic and People's In-
dependent Nomination for Congress,
Sixth District.

"The tariff should be removed
from articles that have to compete
with trust made goods. Relief
from the iniquities of the tariff
system cannot be expected from
men who, one moment denounce
the Payne-Aldrich tariff law and
the next commend President Taft
for pronouncing it the best tariff
law ever enacted."



WILLIS E. REED

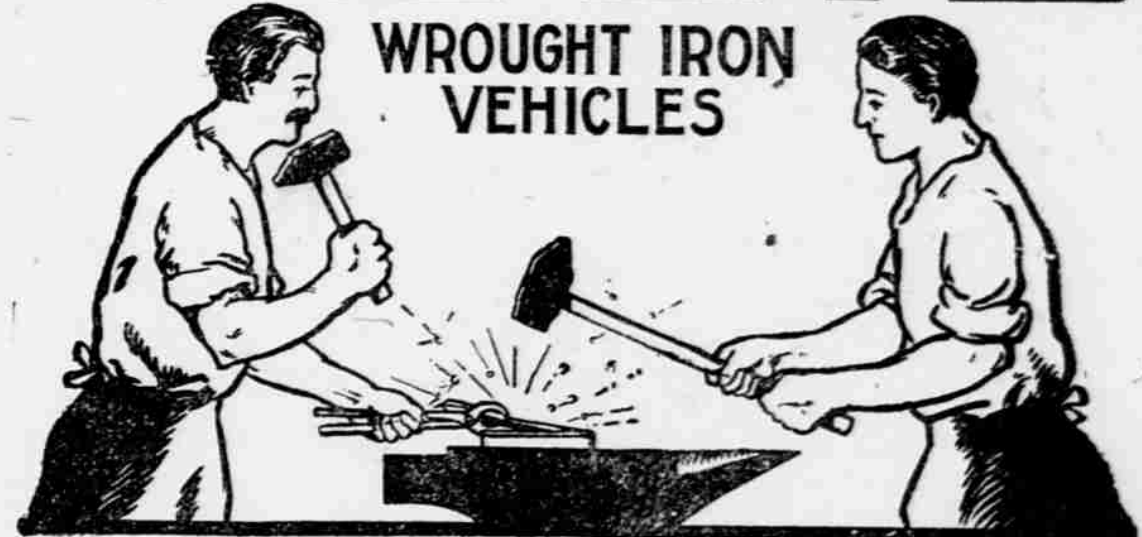
of Madison, Nebr., who has filed
as a candidate for the office of
United States Senator, and who
will appreciate your support.

Taylor is a fighter from way back,
and we guess if the democrats nom-
inate him for congress the Hon.
Moses P. will have the fight of his
life, with a strong probability of
being retired. —Alliance Independ-
ent.

In 1880 the total value of farm
property in Kansas was \$313,535,944,
and in 1900 the total had increased
to \$864,100,286, an increase of some-
thing like 175 per cent in twenty
years. In 1880 the total value of farm
property in Nebraska was \$164,103,-
723, which amount in twenty years
had increased to \$747,950,057, an in-
crease of about 355 per cent.

VELIE

**WROUGHT IRON
VEHICLES**



Metal work is made in the Blacksmith Shop and not in the
Foundry, which means that

Wrought Iron and Steel

are used in place of malleable cast iron—just think what a dif-
ference this makes in the strength and life of a buggy.

You have all had experience with vehicles that are con-
structed with malleable cast iron, which, when broken, are
expensive to replace, causing delays and annoyance.

With the **VELIE VEHICLES** you will have the assurance
that every part in its construction is absolutely as represented.

Quality is Remembered
Long After
Price is Forgotten.



When you are in need of anything in our line just call on us.

VALENTINE LUMBER CO.

A. E. Morris W. W. Morrissey O. W. Noyes