

Farm Implements ^A Cost

We will close out our line of

Manure Spreaders, Corn Planters, Gang Plows, Listers, John Deere Riding Attachments and Freight Wagons

at cost. You will save money by looking over our line of

Breaking Plows, Stubble Plows and Cultivators.

We sell the Superior Drill and have a full line of the Rock Island Plow Goods. We are satisfied with a small profit and will close out our John Deere goods at cost. Save money by getting our prices before purchasing.

LUDWIG LUMBER CO.,
Valentine, Nebraska

Base Ball Supplies

We carry the lines of

A. G. Spalding & Bros.
A. J. Reach Co.

Victor Sporting Goods Co.

Baseball Shoes, Bats, Balls, Uniforms, Masks, Gloves, Mitts, Basket Balls and supplies, Tennis Rackets, Balls and Nets. A classy assortment of Pennants. In fact we carry the only complete line of sporting goods in the city. Send us your mail orders.

Fischer's Hardware.

Pool and Billiard Hall

Cigars and
Soft Drinks

JOHN G. STETTER - PROP.

Henry Schaefer,

Nenzel, Nebr.,

Has received three car loads of Farm Implements, Harness and Hardware. He wants the farmers to know that he can supply them at a saving in price. Everything needed on a farm. Call and see me at

NENZEL

NEBRASKA

ROSEBUD STAGE LINE

D. A. WHIPPLE, Propr.

Valentine Headquarters at the Chicago House

Rosebud " " " Rosebud Hotel

Leave Valentine at 8 o'clock every morning, Sundays excepted.

Arrive at Rosebud at 2 o'clock p. m.

Leave Rosebud at 8 o'clock every morning, Sundays excepted.

Arrive at Valentine at 2 o'clock p. m.

Dinner at Britt at 11 o'clock a. m.

Special attention to passengers, baggage and express or packages.

Leave orders at headquarters or at the Red Front store.

D. A. Whipple.

VALENTINE DEMOCRAT

I. M. RICE - Editor and Propr.
F. Wright, Foreman.

Subscription - \$1.50 Per Year.
Local Notices, 5c per line per issue

Thursday, July 21, 1910.

Announcement

I hereby announce myself to the voters of Cherry county, Nebr., as a candidate for the nomination to the office of County Attorney on the Democratic ticket, at the primaries to be held on Tuesday, August 16, 1910.

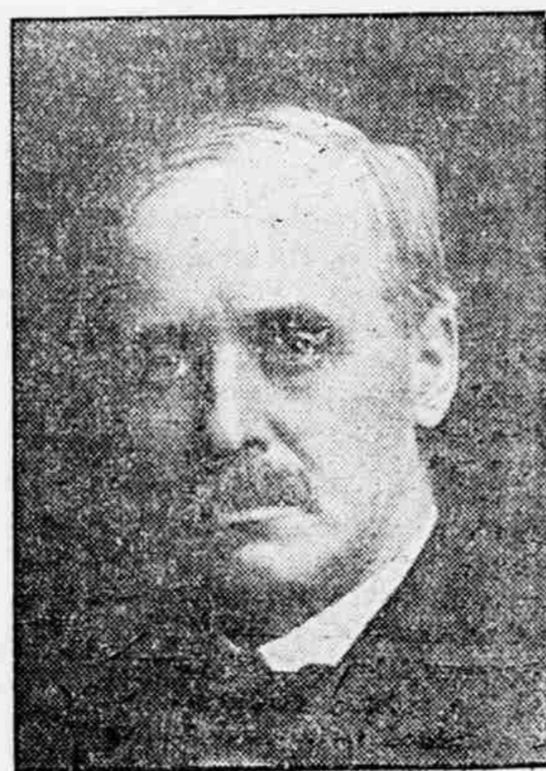
C. A. RUBY,
Valentine, Neb.

The strenuousness of the campaign which W. J. Taylor is making to secure the nomination for congress is characteristic of the man's determination and energy and notice to Kinkaid that if Taylor is nominated he has a fight on his hands.

W. B. Price has withdrawn from the senatorial race in favor of R. L. Metcalfe. Now, all together, line up at the primary for Gilbert M. Hitchcock of Omaha. None of the others are worth considering.—Rushville Standard.

Taylor of Custer will be remembered as one of the forces in the last legislature, who had the fearlessness to grapple with friend and foe alike. It may be said to his everlasting credit that he is absolutely honest and abundantly able to cope with the strongest debaters in the country. He would be a strong man in the next congress.—Wahoo Democrat.

If the government—any government—which is "of, by and for the people," is not what it should be in every essential respect it is the people's own fault and so with reference to the corruptions and rottenness of every description in our government, it is the people's own fault that it is as it is. And such a state of things is the result of too much party prejudice and blind and brute-like fidelity to "my party."—Rushville Standard.



EX-SUPREME JUDGE JAMES R. DEAN
Candidate for Democratic and People's Independent Nominations for Congress, Sixth District.

Excerpt from Judge Dean's press statement, July 14:

"Insurgent republicans point out the evils of standpat, high tariff legislation enacted for the benefit of trust beneficiaries, just as they have been pointed out for many years by Mr. Bryan and other leading democrats, populists and independents. But the insurgents are powerless to give relief. That is part because their party is controlled by standpatters, and in part because when a battle is won they do not press on to victory, as in the case of Speaker Cannon, dethroned, and by his pretended conquerors, the same day re-crowned. Relief from the iniquities of the tariff system cannot be expected from men who, with one breath denounce the Payne-Aldrich tariff law and with the next commend President Taft for saying it is the best tariff law ever enacted. In the expenditure of public money for necessary governmental purposes the people rightfully demand economy on the part of those occupying official station. A system by which a deficit in the nation's treasury is created by official graft and pillage of public funds that must be supplied by the imposition of an ever increasing tariff upon the necessities of life will not always be tolerated by an awakened people."



W. J. TAYLOR

In the candidacy of W. J. Taylor, better known as Taylor of Custer, our county offers the voters of the Sixth district an active, energetic campaigner. People like to help men who help themselves. Taylor is an everyday farmer, yet he was the storm-center of opposition to incorporation influence in the last legislature. Three terms in the legislature makes him know how to do things in such bodies. His honor and ability have never been questioned.—Ross G. Moor, Chairman Custer County Democratic Committee.

IS IT A CABAL?

Hon. W. J. Taylor of Custer county, who is a candidate for the nomination for congress from the Sixth district on the democratic and peoples independent tickets, writes the Journal that he is beginning to see the horns and the cloven hoof of his opposition in the present primary campaign. He seems to think that the same influences which he opposed so vigorously in the legislative session and which were responsible for the defeat of the Initiative and Referendum are combining for his defeat at the primary election.

The more one canvasses the situation and observes the activities being taken by certain interests chiefly outside of the Sixth district—in opposition to Mr. Taylor's candidacy the more it appears probable that his suspicions are well founded.

Proposals for Painting.

Bids for painting exterior and calcimining interior of school building in district No. 3, will be received up till August 15, 1910, at one o'clock p. m. Outside of building to be painted two coats of white lead and linseed oil. Inside to be sized and calcimined one coat. Size of building 24x36x12. Also one coat of mineral paint on coal house, size 8x12x6, including roof. Right reserved to reject any or all bids.

Address all communications to
JENS THOMSEN,
28 3 Box 38, Crookston, Neb.

Contest Notice.

U. S. Land Office, Valentine, Nebraska, July 21, 1910.
A sufficient contest affidavit having been filed in this office by Frederick W. Richardson, contestant, against homestead entry No. 1968, serial No. 0281, made August 14th, 1904, for S.W. 1/4 Sec. 22, N.W. 1/4 Sec. 27, and N.E. 1/4 Sec. 28, Township 28 N., Range 32 W., 6th P. Meridian, by Lester H. Mason, contestee, in which it is alleged that said contestant has wholly abandoned said tract for more than six months prior to the expiration of five years from date of entry; that he has never resided upon, cultivated or improved said tract as required by law and that all of the above defects exist at this date and have not been cured.
Said parties are hereby notified to appear and offer evidence touching said allegations on at 10 o'clock a. m. on August 31, 1910, before the Judge of the County Court for Crook County, at his office in Muller, Nebraska, and that the final hearing will be held at 10 o'clock a. m. on September 21, 1910, before the register and receiver at the United States Land Office in Valentine, Nebraska.
The said contestant having in a proper affidavit filed July 20, 1910, set forth facts which show that after due diligence personal service of this notice could not be made, it is hereby ordered and directed that such notice be given by due and proper publication.
E. OLSON,
Receiver

Keep up the Cultivation of Your Trees.

They are making the greatest growth now and consuming a great deal of moisture in their growth and development. If the ground contains but little moisture, cultivate often. Cultivate as soon as the ground dries after rains.
We have all the varieties of Cherry, Plum, Apple and Forest and Shade Trees, Evergreens, Small Fruit Shrubs, Roses and other ornamentals.
GET THE CHEAPEST for a long time usefulness. A TREE IS A PERMANENT INVESTMENT. Get trees grown nearest home. They are acclimated and grown under same conditions you want them to grow, and where they can be had the quickest.
We have 25 acres in our nurseries and 40 acres in our bearing orchard. Write for catalogue or any information.

Chas. J. Boyd,
Brown County Nursery
Ainsworth, Nebr.
Nursery one block north-east of the Court House.

Our Lincoln Letter.

(Special Correspondence.)

Lincoln, Neb., July 27, 1910.

Governor Shallenberger has increased his great popularity throughout the state by the views expressed in the dispassionate wise and practical statement issued by him on the political situation in Nebraska. The Governor does not set himself up as a dictator nor bigger than his party. He believes the democrats of Nebraska should have something to say about what the party platform shall be rather than listening to the arrogant dictation of any individual. In other words democrats believe that nobody knows more than everybody. The statement reads:

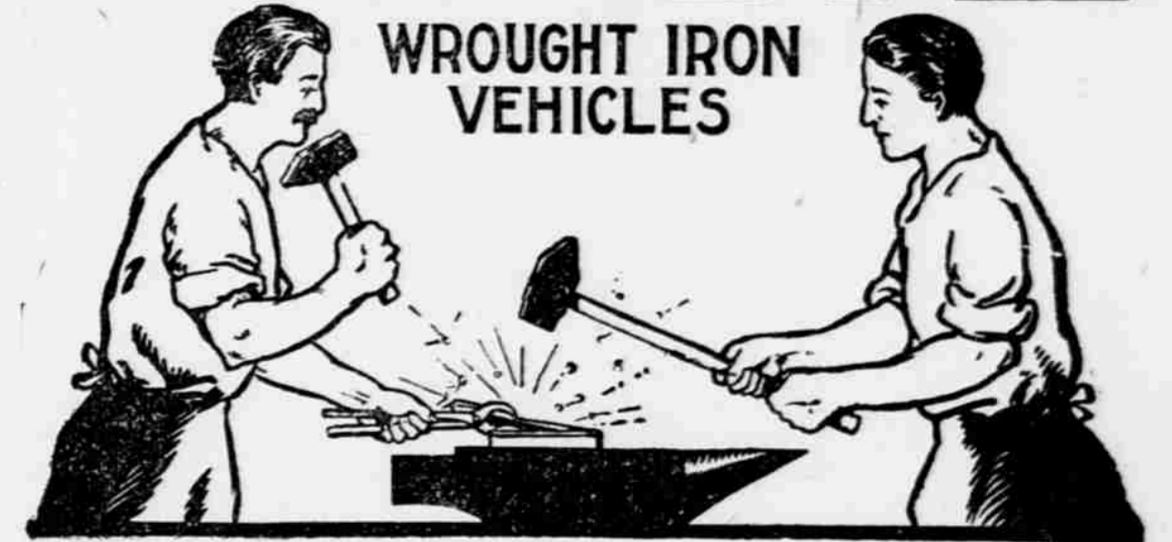
I have read Mr. Bryan's statement recently issued in which he comments upon my not calling an extra session of the Legislature and also expresses his views as to what the next democratic platform should contain. He is much disappointed because I did not call the extra session, but it will be remembered that when I issued my statement, following my return to the State when I found the movement for an extra session started I made plain the requirements that I thought necessary before I would be warranted in calling the members together, and Mr. Bryan accepted them and agreed that they were reasonable. Although nearly two months were consumed in securing the pledges, these conditions were not complied with, and against an extra session grew to over-whelming proportions. I do not ask to divide the responsibility for my action in not calling the extra session, and my reasons were clearly stated in my statement issued at the time I announced my position in that matter. No executive decision of mine, since I have been in office, has met with more universal approval than my action in this matter. Mr. Bryan is of the opinion that my not calling the extra session precipitated the county option question into this campaign, but the extra session could only have determined his action in the matter.

The organized forces in this state who have been long fighting for county option never agreed to the putting of this question aside. Mr. Bryan could only speak for himself and that the issue would still be as acute as ever, no matter whether I called the session or not. In my judgment, it will so remain until settled by a direct vote of the people, made possible by the initiative and referendum.

as I have stated in my speeches delivered in different parts of the state. The matter in which I have differed with Mr. Bryan, is as to the advisability of making county option the principle issue in this campaign. I believe that the right of the people to legislate for themselves under the initiative and referendum is of more importance than any other question now before the voters of Nebraska, and since "to shoot at the flock is often to miss out entirely" my own idea has been to obtain this great privilege in a campaign. However, I do not seek to dictate to my party. I do not claim rights of leadership or attempt to make its platform in advance of the assembling of the delegates at the convention. I stated my views plainly at Central City and until the party speaks in its platform I shall hold to the advice given at that time. If a substantial victory for the temperance forces of this state is the thing to be desired, it is well to consider the judgement of those old in the faith, as well as that of new converts. I observe that so good a judge of Republican politics, and a county optionist as well Mayor Love, is quoted only yesterday as saying that the republican party will not put county option in its platform this year. Many other leaders of that party have told me the same thing. I am willing to risk my political judgment by agreeing with them in this matter. In a speech made at Lincoln a short time ago, evidently prepared with great care and delivered for the purpose of informing county optionists as to the effect of political action in this matter upon the county option question, the national superintendent of the anti-saloon league, speaking with the knowledge to have one party declare for county option and the other refuse to do so. Mr. Bryan disagrees with me upon the matter of making direct legislation the issue in this campaign, and letting county option wait upon its adoption. When county option was at stake before the last legislature, and he was appealed to to give it his support. Mr. Bryan said, "Wait until we get the initiative and referendum." When I was asked to call the extra session Mr. Bryan gave it as his reason for asking me to call the legislature together that county option could thus be made to wait upon the adoption of a direct legislation amendment. I am only now advising for the party's action what Mr. Bryan has so constantly

(Continued on Page 8)

VELIE



Metal work is made in the Blacksmith Shop and not in the Foundry, which means that

Wrought Iron and Steel

are used in place of malleable cast iron—just think what a difference this makes in the strength and life of a buggy.

You have all had experience with vehicles that are constructed with malleable cast iron, which, when broken, are expensive to replace, causing delays and annoyance.

With the **VELIE VEHICLES** you will have the assurance that every part in its construction is absolutely as represented.

Quality is Remembered
Long After
Price is Forgotten.



When you are in need of anything in our line just call on us.

VALENTINE LUMBER CO.

A. E. Morris W. W. Morrissey O. W. Noyes