

THE VALENTINE DEMOCRAT

J. M. RICE - Editor and Proprietor.
MARK ZARR - Foreman.

Entered at the postoffice at Valentine, Cherry county, Nebr., as Second Class Matter.

TERMS:

Cherry Co. Subscriptions: \$1.00 per year in advance; \$1.50 when not paid in advance.

Foreign Subscriptions: \$1.50 per year in advance; paper discontinued at expiration if not renewed.

Advertising Rates: 15c per inch each issue; by contract 12c. Transient ads 20c per inch; locals 10c a line.

Foreign rates for stereotyped advertising, 3 months or longer 10 cents per inch, net.

Local notices, obituaries, lodge resolutions and socials for revenue 5 cents per line each insertion.

THURSDAY, OCTOBER 15, 1908.

Democratic National Ticket

For President:

W. J. BRYAN
of Nebraska.

For Vice President:

J. W. KERN
of Indiana.

STATE TICKET.

Governor.....A. C. Shallenberger
Lieutenant Governor.....E. O. Garret
Secretary of State.....John Matthes, Jr.
Auditor.....W. B. Price
Treasurer.....Clarence Mackey
Supt. of Pub. Ins.....N. C. Abbott
Attorney General.....H. B. Plummer
Com. Pub. Lands and Bldgs.....W. B. Eastham
Railway Commissioner.....Wm. H. Westover
Congressman, 6th Dist.....Wm. H. Westover
State Senator, 11th Dist.....George M. Adams
Representative, 22nd Dist.....J. F. Carr

COUNTY TICKET

County Judge.....James C. Quigley
Commissioner 2nd Dist.....Nels Rowley

SAVING MONEY FOR THE PEOPLE IN THE COUNTY JUDGE'S OFFICE

THE DEMOCRAT is told that the friends of one of the candidates for county judge promise that their man will save money for the people in probate estates. This claim is one never thought of before, how can the county judge save money for anyone in his office? The law says what his salary shall be, and fixes his fees in all cases and THE DEMOCRAT can't see how he is going to save anyone money unless he donates his salary to the people. If he was going to donate his services he would not be a candidate. If there was no salary in the office no one would be after it. The friends of James C. Quigley do not claim that he is going to give his services. He will do the work the law requires of him and will make the charge the law allows and this is just what the people want in the office. They are ready to pay for what they get but they want to be sure the work of the office is well done and if they elect him, and we are sure they will, he will do the work right. He has the education and he will take a pride in doing the work and doing it right. He is out every day meeting the voters and getting acquainted. He has been in the county all his life, knows every foot of the country and knows the people and what they want and he will make a successful county judge.

COUNTY COMMISSIONER

The people confer no favor on the man they elect county commissioner. It is an office that calls for a man of first class ability but it does not carry with it first class pay. For this reason it is hard to get men to take this office.

Nelson S. Rowley did not want to run for the office but his friends got after him and showed him that some one must take it and that he was so situated that he could look after it without neglecting his business, and he finally accepted the nomination. Nels Rowley has lived in this county so long and is so well known that it seems unnecessary to say one word about him. We believe it is sufficient to let the people know that he has accepted the nomination and has promised to serve in case he is elected. It is the people's fight not his. He is not out making a campaign for the place and cannot be expected to do so, but he will appreciate any work done for him by his friends. Everyone knows that he is a business man of good judgment and we need him in the county commissioners' office.

I hereby announce myself as an independent candidate for county attorney of Cherry county, Nebraska, to be voted on at the general election November 3, 1908.

ROBERT C. EASLEY.



A. C. Shallenberger,

THE NEXT GOVERNOR OF NEBRASKA

PROTECT YOUR MONEY ON DEPOSIT.

Are you in favor of ABSOLUTE safety for your money in banks? Are you in favor of electing precinct assessors by direct vote of the people?

Are you in favor of a more just system of taxation between the corporations and other property owners?

If you are in favor of these good and just measures, vote for A. C. SHALLENBERGER, who favors these good things, while Mr. Sheldon stands pledged to oppose them.

Last fall during the panic, the people recognized the importance of having absolute security for their money on deposit in banks. The principle of securing bank deposits is so just and reasonable that there is no argument against it except the argument of the big banker who says that he will oppose it with all his might because it makes all banks equally safe.

THE BIG BANKERS DICTATED THE PLATFORM UPON WHICH MR. SHALLENBERGER STANDS. The convention which made that platform defeated a guarantee plank overwhelmingly. Mr. Sheldon stands squarely on his platform. Mr. Sheldon also opposes the election of precinct assessors by the people and a more equitable system of taxation. A vote for Sheldon is a vote against a deposit guarantee law and against election of precinct assessors by the people.

A vote for Shallenberger is a vote for absolute safety for your money in the banks and for your right to elect your own precinct assessor.

WHERE DO YOU STAND?



JOHN F. CARR

John F. Carr of Springview was in the city Tuesday and Wednesday meeting friends and looking after his campaign as Democratic candidate for representative of this district. Ex-Senator Mutz came in last night and they together have gone up the road to visit people in the west part of Cherry county. Mr. Carr is receiving the loyal support of the best element of Kearney county and should get the support of that element here regardless of party. It's men we want to enact laws for

us and Mr. Carr with his years of experience as a farmer and stock raiser in this country is better capable of looking after our interests than one who never held the handles of a plow nor bared his breast or bent his form to honest toil on the farm and the field. Mr. Carr has eaten his bread earned by the honest labor that you of earlier days experienced. Those hardships which you endured when the crops were short and the winters long and severe in years gone by were the same winters and similar experiences of that veteran of western Nebraska who now for the first time in his life seeks your vote for representative of this district. Frank Carr as he is familiarly called down at Springview has lived in the west long enough to learn of our needs in the legislature. He knows by experiences such as you and others have had, what to do at Lincoln when the legislature is called together. On the other hand his opponent Harry Duval, the republican candidate, has not lived in this district long enough to know the needs of farmers and stockmen, even if he had ever turned his hand to toil on a farm or ranch. Besides being a young man with easy habits and live as you please conduct Mr. Duval has not lived among us long enough to seek a place where he can make our laws. And such laws as he would favor may not suit any of us nor himself. He is already straddling the county option proposition, claiming to be in favor of county option in some places while again it appears that he denies it to others who are opposed. Shall we quote from the Springview Herald to show that he announced himself as in favor of county option there? Those

who are most opposed to county option here are claiming Duval opposed to it.

The situation is very plain that John F. Carr the pioneer of Springview who has lived a lifetime among us, who is one of us is the best man to elect for representative. You won't be ashamed that you voted for John Carr. You can feel proud of it every day in the year.

WHY BILL FELT EASY

Last fall when all my work was done I thought I'd take some well earned fun. Just thought I'd spend about a week visiting my friend, Bill Peck with whom I used to fight an' play—Bill lives down a Oklahoma way—So down I went, as free from care as anybody any where.

"How 'stricks, of man?" says Bill to me. "Oh, bully, Bill, I'm up in G. An' then I told him of success. That I had earned through storm and stress. "Some years were fat an' some were lank. But I got money in the bank. An' now I guess as how I will quit workin' hard," says I to Bill.

That night along 'bout 8 o'clock I got a mighty sudden shock—A message from my wife that said: "Our bank is broke!" An' home I sped, faster than one short half a day I saw my oxen's fade away. The bank was broke—(between the an' you I date I ain't got nary sou).

This fall Bill came to visit me An' found me workin' hard, fagged; But we went visitin' around. An' spent some leisure time in town. Says Bill to me: "In that there wreck it seems you got it in the peck." "Correct," says I, "you state I facts—Right where the chicken got the ax."

That night Bill read his bank had closed, an' I just netherly supposed he'd like to home feelin' blue. Jus' like I had—an' so would you. But Bill he laughed an' said: "I guess that ain't a goin' to make distress." "But all your money, Bill?" I said. "Guaranteed," said Bill: "let's go to bed."

W. M. M.

HON. W. H. WESTOVER

Democratic Candidate for Congress, Sixth District

W. H. Westover, candidate for congress in the 6th congressional district of Nebraska, was born in Delaware County, Iowa, March 19, 1856. The family removed to a farm near Lincoln, Nebraska, in 1869, where he resided and attended school at Lincoln, until 1877, when he commenced teaching a country school and reading law. Was admitted to practice in March 1879, and was married on Christmas day of the same year. Settled in Sheridan County, Nebraska, in 1885, where he has resided up to the present time. Served two terms as county attorney of Sheridan county. At the general election in 1895



W. H. WESTOVER

he was elected district judge of the Fifteenth judicial district, and has held that position continuously up to the present time. Last year at the general election, was elected for the fourth consecutive term, overcoming an adverse majority, and having a majority of 659. While on the bench he has earned the reputation of an able, honest and fearless judge. His rulings and decisions, being universally fair, have given him the confidence and esteem of members of the bar of his district to an unusual degree. Judge Westover is a member of the following fraternal and benevolent societies: Masons, Elks, Knights of Pythias, Modern Woodman of America, and is also a member of the Methodist Episcopal Church, was lay delegate to the general conference at Los Angeles, California, in May 1904. In strong contrast to his opponent, who has lived a bachelor all his days, Judge Westover has a family of nine children, six boys and three girls.

Farmers Institute, Valentine, Friday, Nov. 13, 1908.

AFTERNOON SESSION.

1:30. Soil Tillage.....Mr. O. Hull, Alma, Nebr.
2:30. Prevention of Winter Shrink in Cattle.....Prof. E. W. Hunt.
3:30. Judging Demonstration With Beef Cattle.....Mr. Hull.
4:30. Suggestions to Cooks About Cooking.....Miss Gertrude Rowan

EVENING SESSION.

7:15. The Value of Studying Domestic Science.....Miss Rowan
7:15. Alfalfa, Its Cultivation and Products.....Mr. Hull
8:30. The Improvement of Live Stock on the Farm.....Prof. Hunt
These meetings are held under the auspices of the University of Nebraska and the Valentine Farmers' Institute Association and are free to all.
O. W. Hahn, Sec.

Ship your Live Stock

to

SNYDER MALONE DONAHUE CO.,

SO. OMAHA OR CHICAGO

No shipment too large and none too small to receive the most careful attention.

Each consignment intrusted to our care will be handled by members of the firm.

Each man's stock sold on their merits and a square deal guaranteed to all.

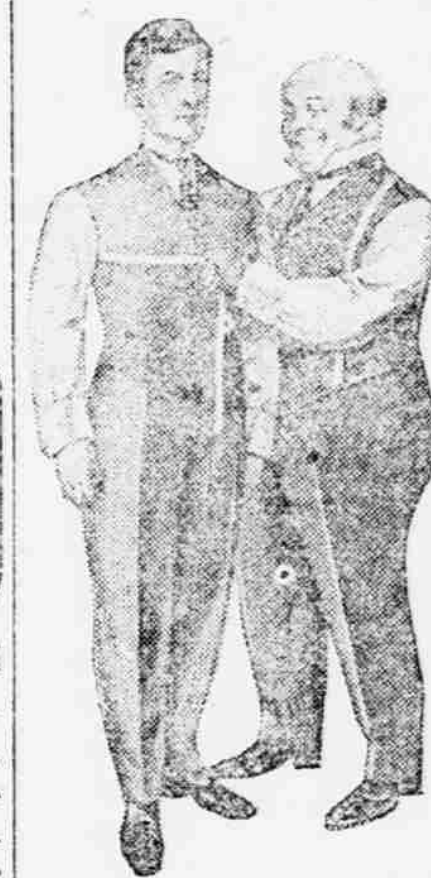
Write us for the market paper and our special market letters, which we send you free of charge.

AMOS SNYDER, Hog Salesman. MATT MALONE, Cattle
GEO. M. WOOD, Sheep Salesman. THOS. J. DONAHUE, Salesman.

The Toggery

ROBERTSON & CO, PROPRS.

Gent's Furnishings and Clothing



COPYRIGHT 1908, G. ROBERTSON & CO.

We also have bargains in shirts, ties, underwear, sox, and hats. Call in and see if what we say is not true.

Cleaning, Pressing and Repairing a Specialty.

Phone 122.

::

Valentine, Nebr.

For the Business Man

Mental concentration and overwork means the loss of vitality. Digesto, with its food properties and mild tonic qualities, make this Malt Extract a necessity to every business man.

Digesto is Efficient and Palatable
At all Drug Stores

Digesto MALT EXTRACT



W. T. Bishop has started a meat market in the building formerly occupied by Baumann & Bachelor.

There will be a celebration of the Holy communion at 10 o'clock a. m., Sunday, Oct. 18, St. Luke's Day, with an appropriate address at St. John's church. Evening prayer and sermon at 7:30.

MILL PRICES FOR FEED.

	Per Cwt.	Per Ton.
Bran, sacked	\$1 15	\$22 00
Shorts, sacked	1 25	24 00
Corn, sacked	1 50	29 00
Oats, sacked	1 60	31 00
Chop Corn, sacked	1 55	30 00
Chop Feed, sacked	1 60	31 00

Sawyer Bros.

Oasis, Nebr.
G. K. Sawyer has charge of these cattle. He has 10 on left shoulder. Some left side. Horses same left thigh. Range on Snake river.

Nebraska Land and Feeding Co.
Bartlett Richards, Pres. Will G. Comstock, V. P.
Chas. C. Jamison Sec. & Treas.
Cattle branded on any part of animal; also the following brands:
Horse branded the same.
Range between Gordon on the F. & M. V. R. R. and M. P. R. in Northwestern
BARTLETT RICHARDS.