

THE VALENTINE DEMOCRAT

I. M. RICE - Editor and Proprietor.
MARK ZARR - Foreman.

Entered at the postoffice at Valentine, Cherry county, Nebr., as Second Class Matter.

TERMS:

Subscription—\$1.00 per year in advance; \$1.50 when not paid in advance.
Display Advertising—1 inch single column 15c per issue or \$6.00 a year.
Local Notices, Obituaries, Lodge Resolutions and Socials for revenue per line per issue.
Brands, 1 1/2 inches—\$4.00 per year in advance; additional space \$3.00 per car; engraved blocks extra—\$1.00 each.
10 per cent additional to above rates if over 6 months in arrears.
Parties living outside Cherry county are requested to pay in advance.
Notices of losses of stock free to brand advertisers.

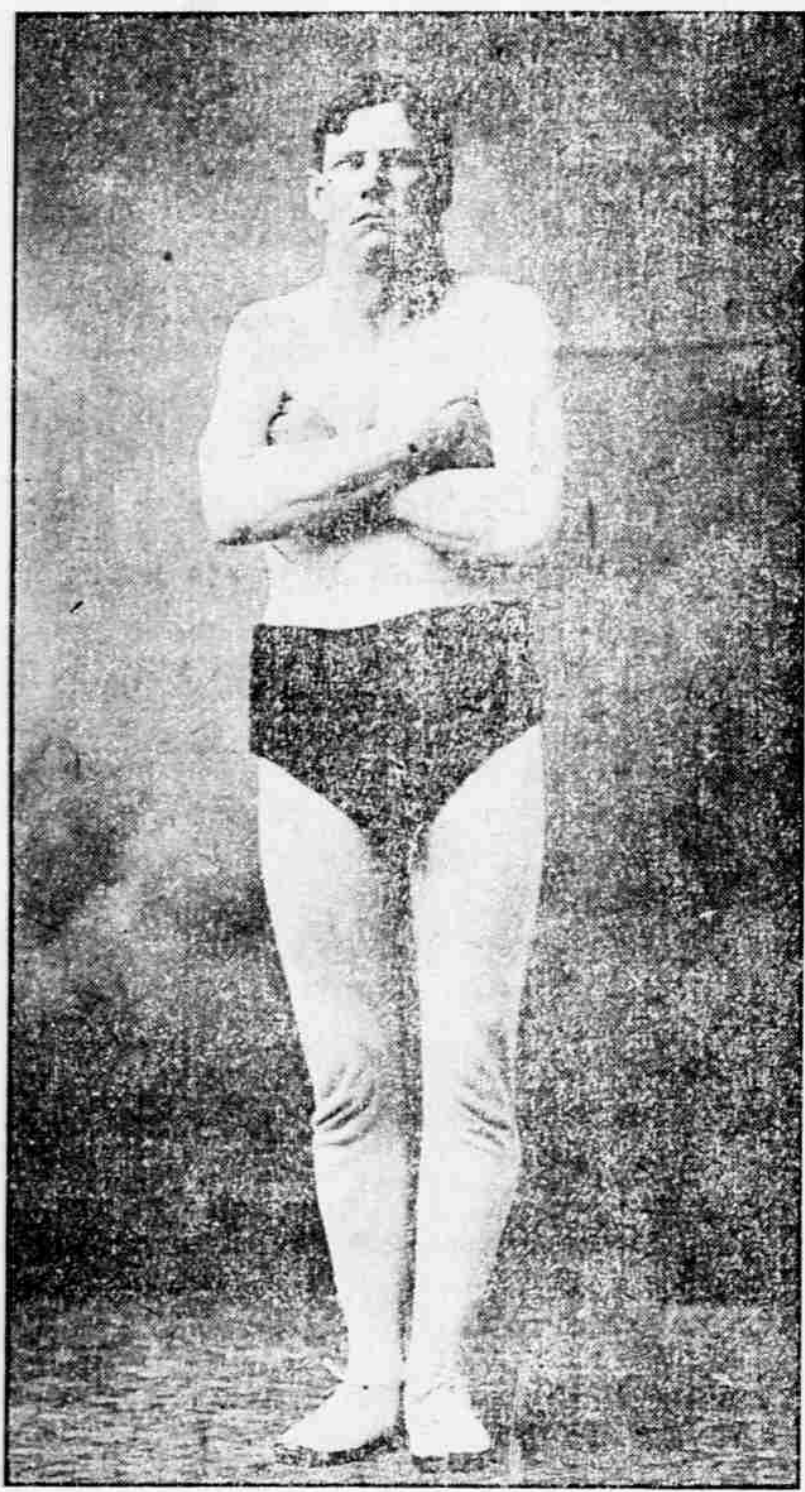
THURSDAY, NOVEMBER 14, 1907.

Official Vote of Cherry County, Nov. 5, 1907.

PRECINCTS—	Sup'rme Judge		Regents University		Railway Com		District Judge		Trans Ferri'r		Co Assor		Co Clk		Co Tr		Co Ju g		Co Sher ff		Co Sup		Co Cor on r		County Commish'r		Total Vote						
	Reese, F.	Loonin, J.	Anderson, F.	Compland, F.	Millard, d.	Stanhil, d.	Reid, F.	Chapman, F.	Clardy, F.	Medford, s.	Donnell, F.	Harrington, d.	Wheaton, d.	For	Agathel	Ormsbee, F.	Young, d.	Reedy, F.	Armstrong, F.	Layton, F.	Oliver, d.	Sherman, F.	Reese, F.	Linn, F.	McDonald, F.	Levitt, F.		Compton, d.	More, d.	Rowling, F.	More, d.		
Barley	56	6	10	13	4	4	0	18	0	0	13	13	7	10	0	23	14	10	18	21	18	5	19	18	14	16	8	29	16	7	24		
Cody	51	4	25	46	36	31	13	59	1	4	13	33	52	65	1	74	44	51	57	62	57	14	86	53	63	42	59	53	32	66	102		
Buffalo Lake	24	17	26	25	16	15	3	27	1	1	10	15	39	30	3	35	18	23	30	27	27	15	24	14	27	19	19	31	24	29	42		
Dewey Lake	16	17	16	16	17	12	11	18	4	6	6	18	14	19	20	5	20	25	26	28	3	47	21	31	44	42	39	27	37	27	34		
Ed	31	10	32	30	19	8	13	35	1	1	24	24	12	15	4	4	3	6	17	40	43	32	23	23	25	19	34	37	8	45			
Enlow	16	7	18	18	6	6	7	17	1	0	0	11	11	11	1	1	1	1	1	1	1	9	15	15	17	8	19	16	9	25			
German	10	10	11	10	10	2	2	14	0	0	0	8	8	8	1	1	1	1	1	1	1	3	14	12	13	15	14	10	13	6	14		
Georg	21	4	21	21	4	3	6	32	1	0	1	17	8	7	0	0	0	0	0	0	0	15	12	12	12	3	28	18	11	31			
Goose Creek	23	5	26	24	5	5	14	26	1	0	2	11	11	13	0	0	0	0	0	0	0	12	18	16	33	29	13	30	29	13	39		
Gillaspie	18	13	19	20	12	14	7	21	1	0	2	14	20	21	4	4	2	1	1	1	4	21	10	25	24	33	23	25	18	26	19	14	
Irwin	15	8	13	13	7	8	2	17	1	0	13	11	11	11	0	0	0	0	0	0	0	17	16	9	18	16	18	13	15	10	18	15	
Keeney	13	14	15	13	12	12	10	15	2	0	0	9	8	23	2	2	2	2	2	2	2	2	2	2	2	2	2	2	2	2	2		
Keweenaw	5	5	7	5	4	3	3	7	6	0	0	8	8	10	0	0	0	0	0	0	0	14	10	7	13	12	5	10	6	11	9	5	
Loup	32	22	31	28	29	19	18	34	3	0	0	33	33	33	1	1	1	1	1	1	1	4	55	14	44	45	47	34	31	28	47	29	
Lawson	20	19	19	17	21	19	13	22	6	0	0	20	19	20	0	0	0	0	0	0	0	38	18	26	33	29	18	15	24	34	21	18	
Merriman	84	31	86	78	2	25	19	7	5	3	65	69	53	57	1	1	1	1	1	1	1	101	61	53	91	94	94	94	87	85	83	123	
Minnehadaza	37	16	35	34	12	12	13	40	9	1	18	21	32	31	0	0	0	0	0	0	51	39	27	47	44	34	32	32	37	41	20	37	
Mothers Lake	6	4	7	8	3	4	5	8	1	0	0	4	4	5	0	0	0	0	0	0	0	9	10	10	10	10	9	9	9	9	9		
Nez	6	13	7	6	11	10	1	6	3	1	7	9	13	4	0	0	0	0	0	0	0	19	15	12	13	4	15	2	17	11	16	6	14
Pleasant Hill	9	10	10	11	7	7	4	10	1	0	0	9	9	9	0	0	0	0	0	0	0	11	8	10	10	9	11	13	9	11	9	19	
River	16	15	16	15	15	12	10	19	1	0	0	17	15	15	0	0	0	0	0	0	0	29	24	9	29	27	25	11	22	24	17	24	
Steen	43	46	46	42	42	38	27	45	8	10	33	31	69	27	0	0	0	0	0	0	0	49	21	15	12	13	4	15	2	17	11	16	
Sparks	21	22	20	21	22	21	7	21	0	0	0	17	17	17	0	0	0	0	0	0	0	40	17	23	25	25	25	25	25	25	25	25	
Schlagel	25	11	25	19	10	5	12	28	6	0	0	24	18	17	0	0	0	0	0	0	0	35	38	6	38	33	33	33	33	33	33	33	
Sharps Ranch	3	16	5	6	10	9	5	6	1	0	0	4	4	4	0	0	0	0	0	0	0	16	6	14	13	13	6	13	5	14	7	4	
Table	24	17	23	23	13	16	9	21	5	6	21	24	19	23	0	0	0	0	0	0	0	49	21	35	29	31	15	30	24	22	47		
Valentine	127	13	121	115	86	81	37	137	17	2	123	96	108	148	7	290	121	128	188	178	121	131	121	134	171	165	108	143	164	104	238		
Woodlake	50	37	49	42	36	29	39	56	7	10	40	34	46	53	2	76	36	53	67	65	46	44	43	46	56	63	53	62	51	38	94		
	793	518	807	747	490	446	319	839	90	118	633	595	716	808	149	1070	689	780	1087	1050	809	699	637	845	1017	963	740	707	982	728	737	1534	

WRESTLING MATCH!

Saturday, Nov. 16, 1907.



WM. FUGATE. (155 lbs.)

Wm. Fugate thoroughly demonstrated to the people here recently that he is one of the fastest middleweights in the country.

A Wrestling match will take place in CHURCH'S OPERA HOUSE, VALENTINE, NEBR., on the above date, between WM. FUGATE of Valentine, and JACK O'LEARY (better known as Albert Edington) of Aurora, Nebr.

Cut of O'Leary has not arrived.

JACK O'LEARY. (150 lbs.)

Mr. O'Leary is the champion welter-weight of the entire northwest.

This match will decide the middleweight championship of this state and will no doubt be the fastest bout ever witnessed in this part of the county. Catch as catch can rules, two shoulders down.

The Hancock Case.

Court is in session this week with Judge Westover on the bench and J. D. Scott reporter. Monday was occupied with the usual preliminaries and judicial cases. Tuesday the case of the state vs D. A. Hancock, charged with perjury, came up for trial and occupied two days, the case going to the jury Wednesday evening. The Sparks neighborhood almost en-mass was in attendance as witnesses for and against. We might say that the town was full of Sparks, Penbrook and Woodlake people who were here as witnesses and jurors and the court room was well filled during the trial. Everybody seemed good-natured and peaceable, while the lawyers tugged away at the bone of contention and fought the legal battle for the prosecution and the defendant. County Attorney John Tucker and Harry Brome of Omaha represented the state, and Robert G. Easley, a local attorney,

and M. F. Harrington of O'Neill the defense. The court room was crowded Wednesday afternoon when the attorneys made their pleas to the jury, which was composed of good representative men of our county. Careful attention was given during the trial and the masterly efforts of the attorneys left no point of significance without thorough discussion. It was all made plain and easy for the jury to make their decision and the audience seemed to grasp the situation that a man commits no crime and does not perjure himself when he tells what he believes to be a fact and without intention to wrong or defraud, even though he may have been mistaken and that a man persecuted or persecuted because of prejudice is not in the interests of upholding the law or the sanctity of our courts or of justice. The case grew out of a ten dollar law suit in which the defendant was accused of false swearing to an im-

material fact, as it appeared in this court. The persons who are responsible for the prosecution have caused an expense of nearly \$2,000, most of which must be borne by Cherry county taxpayers and the defendant who was acquitted and discharged by the jury. It is thus seen what men of prejudicial minds may do to furnish entertainment for the people while attempting to persecute an enemy. It is not always those who dance that must pay the fiddler, for, in this case, all Cherry county is taxed for these costs. Need we wonder why Cherry county gets in debt? And wouldn't it be well for the taxpayers to take more interest in county affairs and less interest in political parties?

Harry Downing of Enlow precinct was in town Monday.

A. P. Klopping and Frank Krampert were up from Wood Lake this week.

We publish the official vote of Cherry county this week which will be found interesting to keep for future reference. Put it away before it is lost.

Mrs. Helen Hornby has just returned from an extended visit to Peru, Omaha, Council Bluffs and different Dakota points. While in Peru she saw Misses Ennis Boyer, Effie Carlson, and Alfa Dunham, students there, and Miss Stoner and Mrs. Crawford, teachers at that place and formerly teachers in Valentine.

The wrestling match Saturday night between Jack O'Leary and Wm. Fugate will be for the championship of Nebraska, and you will want to see it. O'Leary is a swift one and has had many matches. Both have wrestled with Farmer Burns and are no fakes. They'll do some clever work and if one enjoys athletic sports they will want to see this contest Saturday night.

The only genuine and absolutely reliable substitute for tea and coffee is

LIFE COCOA

the new food beverage gives life, health, vigor, joy, comfort and beauty, and is highly recommended for nerve endurance, and building up the constitution. It is a pleasant beverage and contains great nutritive and invigorating qualities. Has the refreshing properties of fine tea, the nourishment of the best cocoas, a tonic and recuperative force possessed by neither, and can be used in all cases where tea and coffee are prohibited.

EGGO'S FRUIT SALT

Eggo's Fruit Salt is a great health reviver. A laxative and thirst quencher. Effervescent and so delicious to drink that a child likes it. Has all the properties of a Sedlitz Powder and more, and is recommended in all cases of indigestion, constipation and headache. Removes impurities from the blood and can be used freely without causing injury

Manufactured by

LIFE COCOA CO.

OMAHA, U. S. A.

The above preparations may be had from all Grocery and Drug Stores.

Valentine's Pure Liquor Center

Public opinion is unerring, public confidence seldom misplaced. The true worth of every business concern to the community in which it operates is fixed by its clientele, the value-giving power of every commercial institution may be determined by the amount of patronage it receives. The people have unmistakably proclaimed their confidence in

The Stock Exchange,

and its methods, by bestowing upon it a far greater patronage than that accorded any other place in Valentine. Where the major portion of the fair, the impartial, discriminating public buys its Liquor and Beer, must be a good place for You, the individual, to trade. Visit The Stock Exchange when you need anything in our line.

W. F. A. MELTENDORFF

MILL PRICES FOR FEED.

	Per Cwt.	Per Ton.
Bran, sacked	\$1 10	\$20 00
Shorts, sacked	1 20	22 00
Chop Feed, sacked	1 55	29 00
Corn, sacked	1 45	27 00
Chop Corn, sacked	1 40	26 00
Oats, sacked	1 60	30 00

Meetings at the M. E. Church Every Sunday.

MORNING SERVICES—	
Sunday School begins at 10:00 o'clock.	
Prayering	" 11:00 "
Junior League	" " 2:30 p. m.
EVENING SERVICES—	
Epworth League begins at 6:30 o'clock.	
Prayering	" " 7:30 "

For Sale or Trade:

Get your property insured by I. M. Rice and you will be safe. His companies pay losses promptly.

One good Kentucky jack. Also one general purpose stallion. J. S. BROSIUS, Wood Lake, Nebr.