

VELIE BUGGIES AND SPRING WAGONS

A Few of the good points:

All wheels, poles, reaches and axles are made from hickory stock. All open head springs 38 inches long and oil tempered. All bolts, clips, bailey hangers, body loops and fifth wheels are made from the best quality of wrought iron. Special channel irons on reaches. Twenty springs in all buggy cushions and twenty-four springs in all spring wagon cushions. Nothing but best of cloth, leather and paint used.

MOLINE WAGONS, ECLIPSE AND SAMSON WINDMILLS

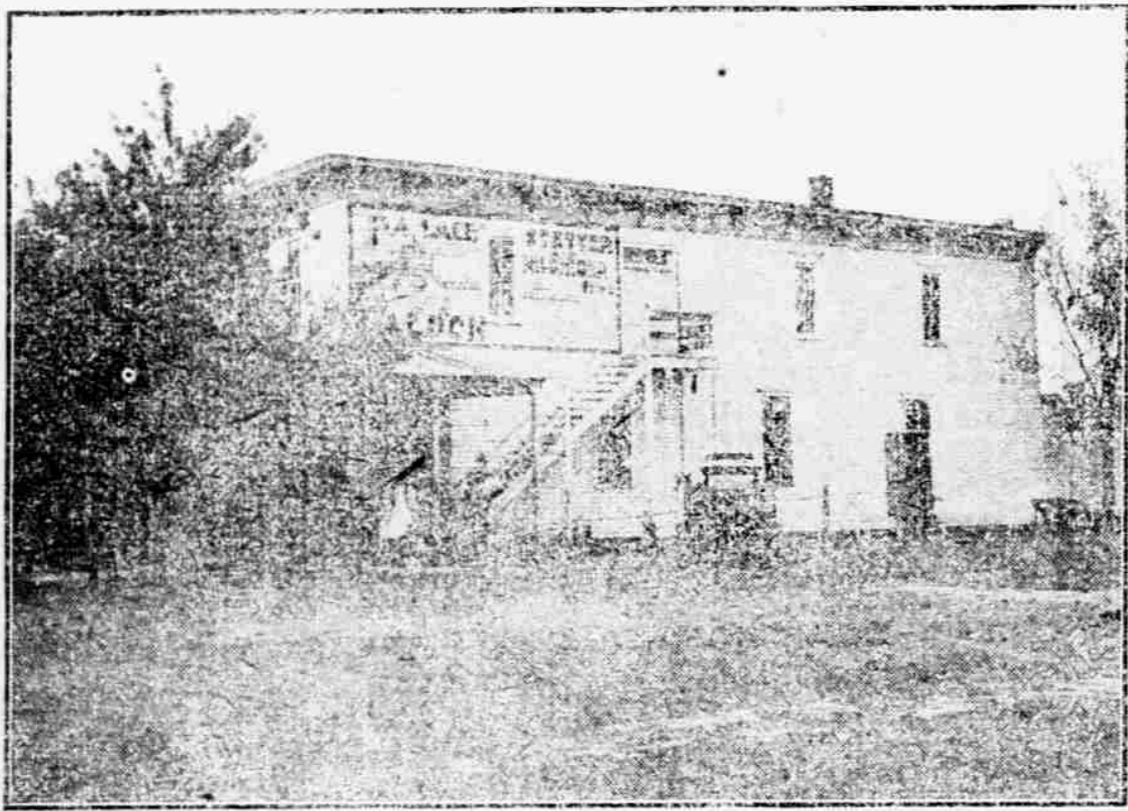
Good and complete stock of lumber always on hand

LUDWIG LUMBER CO.

PHONE 8

VALENTINE, NEBRASKA

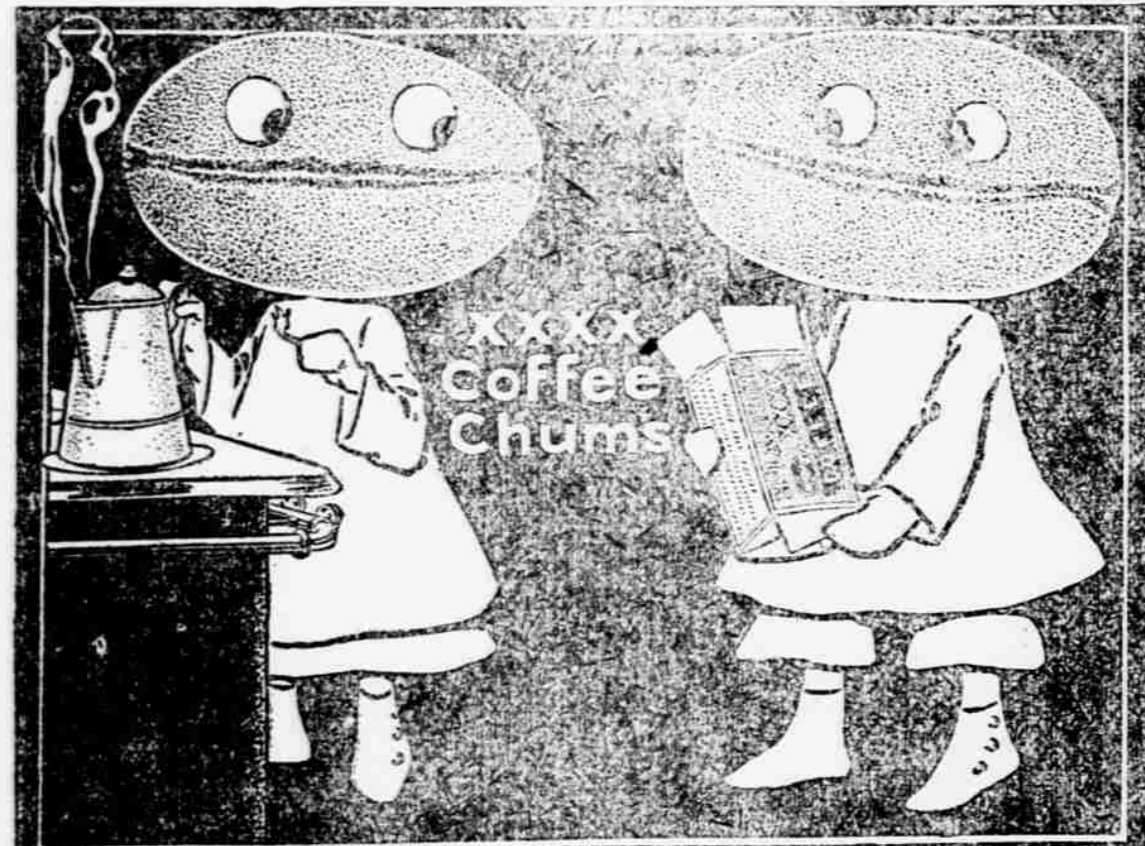
Old Crow,
Hermitage
and
Guchen-
heimer
Rye
Whiskeys.



All Leading Brands Bottled Under the Supervision of the U. S. Gov.

We also handle the Budweiser Beer.

THE PALACE SALOON, JOHN G. STETTER, Propr.



The Longer You Drink It—The Better You Like It

That's because McLaughlin's XXXX Coffee is always the same—day in—day out—always of the same good quality, blended just right, and roasted to a turn—that's satisfaction, and 16 full ounces to the pound is economy.

The handy air-tight package and the glazing of pure sugar keeps the coffee clean and fresh—protected from dust, dirt and foul odors.

McLaughlin's XXXX Coffee is Sold by

DAVENPORT & CO.
RED FRONT MERC. CO.
W. A. PETTYCREW.

MILL PRICES FOR FEED.

	Per Cwt.	Per Ton.
Bran, sacked	\$1 09	\$18
Shorts, sacked	1 15	21
Chop Feed, sacked	1 50	28
Corn, sacked	1 30	24
Chop Corn, sacked	1 35	25
Oats, sacked	1 00	30

Meetings at the M. E. Church Every Sunday.

MORNING SERVICES—
Sunday School begins at 10:00 o'clock.
Preaching " " " 11:30 " "
Junior League " " 2:30 p. m.
EVENING SERVICES—
Epworth League begins at 6:30 o'clock.
Preaching " " " 7:30 " "

REV. C. E. CONNELL, Pastor

GEORGE L. LOOMIS.

I feel greatly interested in the success of Geo. L. Loomis this fall and am anxious to see him elected. I have known him for many years. He has always been deeply interested in the success of the principles for which we stand. I shall do everything possible to assist in his election.

W. J. BRYAN.

I shall do what I can to advance the interests of Judge Loomis and contribute to his election, believing him in every way worthy and qualified for the position of judge of our highest court.

W. V. ALLEN.

I am doing everything I can to assist in the election of George L. Loomis for judge of the supreme court.

I. L. ALBERT.

I am greatly interested in the success of our ticket this fall. I hear a great many well informed republicans, as well as democrats, say they believe Judge Loomis will be elected.

RICHARD L. METCALFE.

I can assure that Judge Loomis will have the hearty support of all democrats in this corner of the state. Personally I am deeply interested in his election as our supreme court is sadly in need of not only a democrat but a lawyer of the integrity and ability of Judge Loomis.

GUY T. GRAVES.

I am anxious to do everything I can to assist in the election of Judge Loomis and will take pleasure in doing everything I can toward furthering his candidacy.

C. J. SMYTHE.

I certainly feel friendly to Judge Loomis and will do everything I can to help him. I want to see him elected.

GEO. W. BERGE.

I am glad of the opportunity to testify the high regard I have for Judge Loomis as a lawyer and a man. I am greatly pleased with his nomination and I sincerely hope

he will be elected.

JOHN J. SULLIVAN.

The nomination of Judge Loomis meets with the hearty approval of all the democrats and populists of Platte County. EDGAR HOWARD.

I am doing everything I can to advance the candidacy of Judge Loomis. He is clean and able, will make an excellent judge and I believe he will be elected.

W. H. THOMPSON.

Geo. L. Loomis possesses the qualifications, the mental and moral courage, the democratic spirit and stamina of character so greatly needed on the supreme bench. The people of Nebraska will make no mistake in electing him supreme judge. He should have the united support of democrats and populists. G. W. MEIER.

Penbrook Quills.

(Crowded out last week.)

I wonder if our editor would give the Cherry county women a correspondence column to swap experiences and exchange ideas and recipes? Many of us live far from neighbors and I believe we all would get much pleasure and benefit from a weekly visit on paper. [Would be pleased to do so.—Ed.]

As so many little children die it seems to me it would be timely to have a little talk on the proper care and food for a child up to three years old. Will mothers who keep their children well please write?

Miss Kortz, accompanied by Mrs. Walcott visited the schools in eastern Cherry county last week.

E. L. Hutchison and wife started overland for Buffalo county Monday. Mrs. Hutchison will remain at Ravenna for medical treatment. Mr. Hutchison took a bunch of horses with him to sell, and was accompanied by John and Harry Roberts.

Misses Elizabeth and Anna Barth, evangelistic workers, are again at Sparks. About a year ago they took part in revival services at Sparks and some 65 young people were converted. As but little effort was made by the church to instruct or care for these young men and women none of them came forward in baptism. If the shepherd don't feed the lambs they are apt to wander away. These sisters are a power in song, in prayer, in exhortation and have a wonderful influence over the young.

THEY WERE LOST.

On a fair autumn morn
On business intent,
A matron and maid,
From Valentine went.

While chatting so gaily
The time quickly passed,
But the circling - and hills
Were noted at last.

It is certainly time
We turned to the river,
But that road wandered on,
And they knew with a shiver—

As they followed its windings,
That north, south, east or west
Had quite vanished away,
And we're lost they confessed.

They turned, and retracing
Weary miles without end,
Till the low sinking sun
Brought the home of a friend.

Dusty and dazed
They found at this retreat,
With sighs of contentment,
There was something to eat.

Their gaunt ponies whinnied
Their very great pleasure
At the rattle of corn
In the half bushel measure.

Dry measure's our liking
They agreed with much noise,
We're weary, so weary
Of old Avoidupois.

EAGLE.

Contest Notice.

U. S. Land Office, Broken Bow, Nebraska, September 25, 1907.
A sufficient contest affidavit having been filed in this office by Catherine Matthews, contestant, against Homestead entry No. 3221 made June 19, 1902, for NE 1/4, section 27, township 25, range 31, by Frederick A. Durrie, contestee, in which it is alleged that Frederick A. Durrie has wholly abandoned said tract of land for more than six months last past, that he has not cultivated any portion of said land nor caused the same to be cultivated, that there is no house on said land for more than one year last past and never was a house on the land that was habitable, that the said Frederick A. Durrie has wholly failed to comply with the law in regard to settlement and cultivation on said land and that these defects have not been cured but exist at the present time.
Said parties are hereby notified to appear in person and offer evidence touching said allegation on at 10 o'clock a. m. on November 19, 1907, before J. H. Welton, U. S. Commissioner, Mullen, Neb., and that the final hearing will be held at 10 o'clock a. m. on November 23, 1907, before the register and receiver at the United States Land Office in Broken Bow, Nebraska.
The said contestant having, in a proper affidavit, filed Sept. 10, 1907, set forth facts which show that after due diligence personal service of this notice cannot be made, it is hereby ordered that such notice be given by due and proper publication.
DARIUS M. AMSBURY, Receiver.

R M Faddis & Co.
Postoffice address—Valentine or Kennedy.
Some branded on left thigh.
Horses branded on left shoulder or thigh.

N. S. Rowley
Kennedy, Nebraska.
Same as cut on left side and hip, and on left shoulder of horses. Also on left side and hip.
Some cut on left side and hip.
Some cut on left side and hip.
Some cut on left side and hip.
Some cut on left side and hip.

G. W. Bennett
Simeon Neb
Stock branded with 7 on left hip also same as cut Range between Gordon and Snake creeks and on the Niobrara river.

George Heyne
Gody, Neb
Brand registered No 1027
Horses branded on left shoulder Range north and south of Cutcomb Lake in Cherry Co.

A T DAVIS
Postoffice address Hyannis, Neb
On right side of horses on left shoulder also cattle on right side Range to miles north of Hyannis.

Pat Peiper
Simeon Neb
Woodlake Neb
John Roan's private mark, set in left ear

C. P. Jordan.
Rosebud, SD
Horses and cattle same as cut, also Calf No. 13 on right hip. Range on Oak and Butte creeks. A liberal reward for information leading to detection of rustlers of stock bearing any of these brands.

Albert Whipple & Sons
Rosebud, S. D.
Cattle branded SOS on left side OSO on right side. Some cattle also have 2— on neck. Some with A on left shoulder and some branded with two bars across hind quarters. Some Texas cattle branded SO on left side and some on left side. Horses branded SOS on left hip. Some cattle branded AW in ear connected on both sides and left hip of horses.

R-I-P-A-N-S Tablets
Doctors find A good prescription For mankind
The 5- cent package is enough for usual occasions. The family bottle (60 cents) contains a supply for a year. All druggists sell them.

Contest Notice.
U. S. Land Office, Valentine, Nebraska, September 25, 1907.
A sufficient contest affidavit having been filed in this office by Guy W. Phillips, contestant, against Homestead entry No. 1550, made March 31, 1902, for NW 1/4, SE 1/4, NW 1/4, NE 1/4, section 13, township 27, range 35W, by Joel C. Howes, contestee, in which it is alleged that claimant has wholly abandoned said tract for more than six months last past, that he has never resided upon, cultivated or improved said tract as required by law, that he does not maintain a bona fide residence on said tract but lives elsewhere, that said defects exist at this date and have not been cured.
Said parties are hereby notified to appear in person and offer evidence touching said allegation at 10 o'clock a. m. on the 14th day of November, 1907, before John H. Welton, U. S. Com. at his office in Mullen, Nebraska, and that the final hearing will be held at 10 o'clock a. m. on November 15, 1907, before the register and receiver at the United States Land Office in Valentine, Nebraska.
The said contest affidavit, in a proper affidavit, filed Sept. 25, 1907, set forth facts which show that after due diligence personal service of this notice cannot be made, it is hereby ordered and directed that such notice be given by due and proper publication.

E. OLSON, Receiver.

G. W. BEAMER
Gordon, Neb.
Cattle branded on left side 24 and 24-inch circle Brand registered 875.
Horses branded on left shoulder. 24-inch circle. 1-in box. Registered 876. Range—6 miles south Irwin on Niobrara river.

Parmelee Cattle Co.
Re ebud, S. D.
Cattle branded as cut on left side with stripe under tail.
Horses branded on left thigh.
Range on Soldier creek.

Metzger Bros.,
Cattle branded anywhere on left side.
Earmark, square crop right ear.
Horses have same brand on left thigh.
Range on Gordon and Snake Creeks. A reward of \$250 will be paid to any person for information leading to the arrest and final conviction of any person or persons stealing cattle with above brand.

Jos. Bristol
Valentine, Nebr.
Range on Niobrara river four miles east of Ft. Niobrara.
Horses and cattle branded as shown in cut.

H A BUCK
Postoffice address Hyannis, Neb
Branded on left side Range eighteen miles north of Hyannis.

J. A. YARYAN
Pultman, Nebr
Cattle branded JY on right side Horses branded JY on right shoulder Reasonable reward for any information leading to the recovery of cattle strayed from my range.

Saury Williams.
Merriman, Nebr.
Mostly on left side. Some on right side. Horses same on left shoulder. Range—Lake Creek, S. D.

D. M. Sears.
Kennedy, Nebr.
Cattle branded as cut, left side some on left hip. Horses same on left shoulder. Range—Square Lake.

WILLIAM BEAMER
Gordon, Nebr.
Cattle branded same as cut on left side. Horses branded on left shoulder. Range—6 miles south of Irwin.

J. B. Lord
Simeon Neb
Stock branded same as cut back right shoulder and on right hip. Range on the Niobrara.

ALONZO HEATH
Postoffice address Coity, Nebraska
On left side. Horses left shoulder. Range north of Cutcomb Lake.

C. H. Little.
Merriman, Nebr.
On either side Horses same on hip. Also S W
Range—Lake Creek S D

Sawyer Bros.
Postoffice address Oasis, Nebr
G. K. Sawyer has charge of these cattle Horses D S on left shoulder Some stock on left side Horses same on left thigh. Range on Snake river.

Nebraska Land and Feeding Co.
Bartlett Richards Pres Will G Comstock, V. P. Chas C Jamison SeckTreas
Cattle branded on any part of animal; also the following brands:
Horses branded the same
Range between Gordon on the F. E. & M. V. R. R. S. D. & M. V. R. R. S. D. Bartlett Richards, Elkhorn, Nebraska.