

# FLATO COMMISSION COMPANY

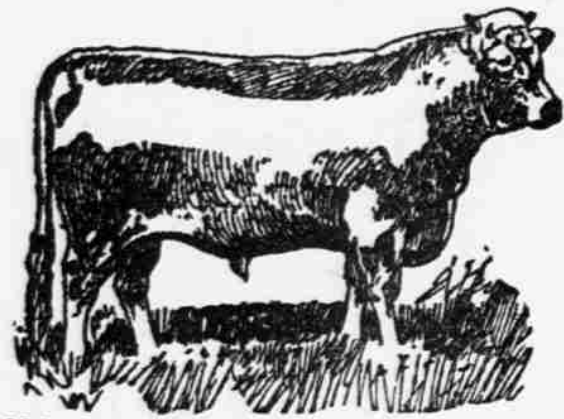
LIVE STOCK SALESMEN AND BROKERS  
Capital \$100,000.00

**Directors:**  
F. W. FLATO, JR., President.  
PAUL FLATO, Vice President.  
J. C. DAHLMAN, Secretary.  
JOHN D. SEITZ.  
ED. H. RIED.

**Salesmen:**  
Ed. H. REID } Cattle Salesman  
JIM S. HORN }  
E. W. CAHOW, Hog Salesman  
HUGH HITCHCOCK, Sheep "  
JOHN P. CLARY, Cashier

SOUTH OMAHA, NEBRASKA

Correspondents:  
DRUM-FLATO COMMISSION COMPANY  
Capital \$500,000.00.  
CHICAGO. KANSAS CITY. ST. LOUIS



2822 N STREET,  
Three Doors From Corner

## STOCK EXCHANGE

### RESTAURANT.

OPEN DAY AND NIGHT.

E. T. MILLER, Proprietor.

—LODGING FOR STOCKMEN—

40 NEWLY FURNISHED ROOMS.  
South Omaha.

RATES:—\$1.00 to \$1.50 Per Day. Telephone No. 67  
\$5.00 to \$7.00 Per We-k.

# REED HOTEL.

MRS. JOHN REED, Proprietress.

STOCKMEN'S PATRONAGE ESPECIALLY SOLICITED.

25th St. Between L and M Streets. South Omaha, Nebr

## A Few Facts For Cattle Dealers.

It has been repeatedly demonstrated in the past that

# SIoux CITY IA.

Stands at top as a market for Range Feeders

You can satisfy yourself as to the truth of that statement by comparing the sales at Sioux City, last year, with those at any other competitive market. You can also ask your neighbors who have sold cattle at Sioux City. This year Sioux City is in the field for fat cattle as well as feeders. The great beef slaughtering plant of the Cudahy Packing Co. is ready for business.

No charges, except for feed ordered if your cattle are not sold on our market

The Sioux City Stock Yards Co.

JOHN H. KEENE, General Manager

## Millinery

and Ladies' Furnishing Goods  
CALL AND GET PRICES  
CORA GILLETT.

# COX, JONES & COX

LIVE STOCK  
COMMISSION MERCHANTS

SOUTH OMAHA, NEBRASKA  
Room 108 Exchange Bldg.

References: UNION STOCK YARDS NATIONAL BANK PACKERS' NATIONAL BANK.  
Telephone 141

We have a large clientele among Nebraska Feeders and can always beat Omaha prices to Ranch customers IF NOTIFIED BEFORE SHIPMENT.

C. H. CORNELL, President. M. V. NICHOLSON, Cashier

# BANK OF VALENTINE.

Valentine, Nebraska.

A General Banking Business Transacted  
Buys and Sells Domestic and Foreign Exchange

Correspondents: Chemical National Bank, New York. First National Bank, Omaha Nebr

# The DONOHER

Is continually adding improvements and it is now the best equipped, and most comfortable

FIRST-CLASS MODERN HOTEL  
IN NORTHWEST NEBRASKA

Hot and Cold Water Excellent Bath Room Two Sample Rooms

# CHERRY COUNTY BANK

Valentine, Nebraska

Every facility extended customers consistent with conservative banking Exchange bought and sold. Loans upon good security solicited at reasonable rates. County depository.

E. SPARKS, President CHARLES SPARKS Cashier



## AMERICAN RAMBOUILLETS.

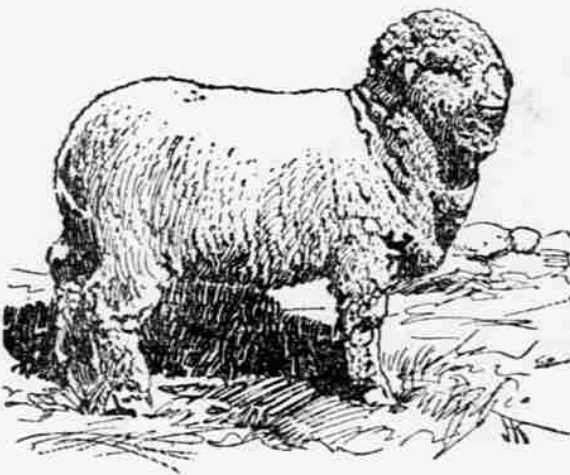
The Famous Colby Farm Now Run by a Woman.

More and more attention is constantly being given by stock raisers to pure blood in stock of all kinds, and especially so is this true with regard to the breeding of sheep. The large sheep men are constantly seeking to improve their flock by breeding from registered rams of approved strains.

A growing favorite is the Rambouillet. This sheep is becoming more popular every year, and its friends claim that it combines more of the characteristics of the perfect sheep than any other breed.

The Rambouillets began to be imported into the United States some years ago, and are now gradually spreading over the whole country, and particularly in the west, among the large breeders. It was not until 1889, however, that the American Rambouillet Sheep Breeders' association was organized, largely through the efforts of the late Mr. L. B. Townsend of Ionia, Mich., who was the first member to sign the articles of association, its first treasurer, and under whose direction the first volume of The Rambouillet Record was printed in 1891. Since that time the association has grown into a large and influential body, composed of some of the best known sheep men.

Mr. L. B. Townsend was for many years president of the association, which office he held at the time of his death about a year ago. He gave largely of his time and money to raising the



A COLBY RAMBOUILLET.

standard of sheep breeding, sparing no expense in importing Rambouillets into this country and in introducing them to the woolgrowers here.

The Townsend farm at Colby, Montcalm county, Mich., is known all over the country as the "Colby Rambouillet Farm" and the place where this breed of sheep in all its purity can be found surrounded by the most favorable conditions possible for the breeding of sheep. The farm consists of about 1,500 acres of land, well watered and with most excellent pasture. The buildings are large and adapted to sheep raising. The farm has a railroad station of its own, with a long siding for shipping purposes, and during the sheep season prominent sheep men from Montana, Idaho and Dakota can there be seen together with men from Texas and Mexico. Since the death of Mr. Townsend the Colby farm has been successfully managed by one of his daughters.

The history of the Rambouillet is interesting: In 1785 Louis XVI of France, who two years before had bought the domain of Rambouillet and established an experimental farm thereon, obtained permission from the king of Spain to purchase and take from that kingdom a flock of pure Merinos. The Spanish king gave orders that the selection be made from the finest flocks of his kingdom. The Rambouillet flock was put under the care of an agricultural commission at the beginning of the French revolution and through all the horrors of that period it was preserved from danger. From the day of its foundation in 1786 to the present time, a period of over 100 years, this flock has been conducted with the closest attention to feed, care and selection. From this flock and the equally well bred royal flocks of Germany have the American importations been made, and the royal flocks of France never received better care from the king than they now receive at the Townsend farm.

The Rambouillet has a broad back, covered with a fine, well crimped wool, long, soft and compact. It is even over all parts of its body from his eyes to his hoofs. It is remarkably free from yolk, but with oil sufficient to promote the greatest growth, finest fiber and most compact fleece, which parts as a book opens. Longevity is a great point with these sheep, ewes from 12 to 15 years of age producing good lambs. The best rams weigh from 200 to 250 pounds and shear from 15 to 24 pounds of wool. These rams are especially valuable to cross on Merino grades or any of the coarse wool breeds. The Rambouillet ewes make excellent mothers and under proper conditions will produce lambs at any season of the year, which is a great advantage, as this is decidedly a mutton breed as well as a great wool producer.

### Brood Mares.

A brood mare in foal needs more vitality than a horse in training if she is to drop a thrifty, vigorous colt.

### Growing Colts.

A growing colt should never be worked so hard as to thoroughly tire it, as when tired it is easily spoiled.

## CATTLE IN THE SOUTH.

How Planters May Escape From the Fate of Cheap Cotton.

R. T. Nesbitt, a successful stock breeder and champion of mixed farming in the south, writes The Southern Planter of Richmond on the discouragement from the low price of cotton and urges cattle growing in the south:

"Under present conditions this question is fraught with utmost interest to the large class of farmers who are casting about for some means to supplement the meager income derived from their farms. Is there any feasible ground for believing that the raising of cattle may become a source of steady and remunerative income to the south? Is there a certain market? Are the conditions surrounding us at home such as to encourage such an industry? As to markets, one effect of the Spanish-American war will be to increase the trade expansion of the United States, and the south should not lag behind in claiming and holding her legitimate share.

"It is known that in our recently acquired West Indian dependencies the supply of live stock is far short of the demand. They do not raise their meat supplies. It is also a fact that iceed meats cannot be profitably introduced into these islands; cattle on foot have to be imported. There exists no reason why we should allow the countries south of Cuba to take this trade from us. We are as close, if not closer, to these islands than they are and are well prepared by natural advantages and by easy means of communication to engage in the business of supplying these West Indian countries, which are now open to us. Venezuela is already shipping beef and the future demand will be steady. Can we compete with these South American states in supplying the demand?

"In addition to corn, oats, wheat, sweet and Irish potatoes, cane sirup, hay and grasses, we have our never failing cottonseed hulls and meal—once a wasted byproduct, now heading the list among feeding stuffs—and also the shredded cornstalk fodder, just beginning to come into general favor, while sorghum, pea vines and a great variety of green crops furnish material for summer feeding and for the winter silo."

### Improving Farm Cattle.

We have frequently noted the fact that the big stock raisers of the west take the best of the pure bred stock from the breeding establishments of the eastern and central states, leaving for the farmers of these states the second rate animals. There is a good reason for this in the fact that the western man with his large number of females can afford to pay a better price for a pure bred male than the farmer whose herd is small. But, whatever the reason, the fact is to be deplored, from the standpoint of the farmer, because it is constantly increasing the capacity of his rivals to compete in the quality of their stock. We have seen range bred cattle improving steadily for years, while those bred on farms have stood still or retrograded, and the reason is that the ranchman has bred straight and bred up, while the farmer has too often done neither. The good bulls have gone west, and the result is seen in range bred cattle that top the market when fed right. If our farm bred cattle are to maintain their lead, they must be bred up. If individual farmers cannot put up enough money to keep the best bulls at home, they must club together or organize to do it. It is this or march in the rear of the procession before many years in the breeding of beef cattle.—National Stockman.

### Cotton Seed For Hogs.

W. A. Henry, in his work entitled "Feeds and Feeding," presents the following on feeding cotton seed to hogs: "All efforts to determine the poisonous principle in the cotton seed, if there really be one, have thus far proved futile, and the matter is still a mystery. The effects have been ascribed to the line of the seed, to the leathery seed coats causing injury to the delicate lining of the digestive tract, to molds, to changes in the composition to the meal when exposed to the air and to some definite poisonous principle in the seed itself, as in the case of the castor oil bean." Good authorities assert that cotton seed is also fatal to hogs. Sometimes they will thrive on it for a time, but it will kill them quickly. Some months ago The Journal gave the experience of a gentleman who had farmed many years in Tennessee. His hogs had access to cotton seed that had been in shallow water for some time, entirely below the surface, but within reach of the hogs. All of them seemed to thrive on the feed, but it was not shown how long they fed on it. Altogether it would be safer not to "monkey with it."—Swine Breeders' Journal.

### Farrowing Sows.

The Farm Journal gives the following advice in regard to farrowing sows: After parturition care should be exercised that the dam does not take cold, and her food should be of a nonstimulating character for a few days. A little bran and water will be enough food for the first 24 hours and only small additions to this for three days. Nature needs rest and will recuperate in the best way. If these rules be observed, the system will be all the more vigorous and able to assimilate food to nourish the young afterward. The digestive capacity of many sows is lessened by overfeeding at this critical time. As a natural sequence the pigs are not so lusty and large at 6 to 8 weeks old as they should be to command ready sale. If the sow has been fed the best on the farm directly after the pigs arrive and fever sets in, get into the pen with a sponge and pail of hot water and bathe her under for half an hour twice or three times daily and give loosening food.

# CITIZENS - MEAT - MARKET

GEO. G. SCHWALM, PROP.

This market always keeps a supply of

# FRESH - FRUIT - AND - GAME

In addition to a first-class line of Steaks, Roasts, Dry Salt Meats, Smoked Meats, Breakfast Bacon and Vegetables

At Stetter's Old Stand on Main Street. VALENTINE, NEBRASKA

# THE PALACE SALOON

HEADQUARTERS FOR

WINES, LIQUORS AND CIGARS

Of the Choicest Brands

VALENTINE

NEBRASKA



## Why Pay \$30.00

For a drop-head machine when you can get a first-class machine for \$21.00 by writing to I. H. EMERY, Valentine, -Nebr.

## Hides Wanted

Highest market price paid and prompt returns. Reference—Omaha National Bank.

F. S. BUSH & COMPANY.

513 South 13th St., OMAHA, NEB

We charge no commission.

Mill Prices for Feed.	
Bran, bulk	50c per cwt \$9.00 ton
Shorts bulk	60c per cwt \$11.00 ton
Screenings	40c " \$7.00 "
Chop Feed	70c " \$13.00 "
Corn	65c "
Oats	1.00 "

## FIRST CLASS MILL

I have established a Feed and Saw Mill 9 miles south of Cody, at the mouth of Medicine Canyon, and am now prepared to grind Feed, Corn Meal and Graham, or turn out all kinds of Lumber and dimension stuff, and Native Shingles. Give us a trial order.

J. F. HOOK

## If You Want to Buy or Sell

Live Stock, make your wants known to the

Cherry Co. Live Stock Exch. Valentine, Nebr.

## JONES & DUNN Carpenters and Builders

Woodwork of all kinds promptly and carefully done

## TANKS

And repairing made a specialty  
Shop at residence opposite the School House.

Give us a Trial

## THE ELKHORN

RAILROAD.

'North-Western Line' is the best to and from the SUGAR BEET FIELD

—OF—  
NORTH NEBRASKA.

## ABOUT WINDMILLS

Having again entered into the windmill business I am better prepared than ever to sell farmers and stockmen just the kind of outfit they need. Have five kinds of mills to select from, either wood or steel, and ask you to call on me and get prices before purchasing. My prices are reasonable.

S. MOON, VALENTINE, NEB.

## Feed in Transit at Fremont

Capacity:— Sheep, covered sheds, 24 cars; open pens, 15,000. Cattle 28 cars  
The place to rest and feed for the Omaha market.  
Easy run to feeding points outside Chicago.  
Long distance telephone.  
Write or wire when you will arrive, to

Fremont Stock Yards Co

## A FREE PATTERN

(your own selection) to every subscriber. Only 50 cents a year.

McCALL'S 50c YEAR MAGAZINE

A LADIES' MAGAZINE.  
A gem; beautiful colored plates; latest fashions; dressmaking economies; fancy work; household hints; fiction, etc. Subscribe to-day, or send for latest copy. Lady agents wanted. Send for terms.

Stylish, Reliable, Simple, Up-to-date, Economical and Absolutely Perfect-Fitting Paper Patterns.

McCALL 10c BAZAR PATTERNS 15c

(No-Scam-Allowance Patterns.) Only 10 and 15 cts. each—none higher. Ask for them. Sold in nearly every city and town, or by mail from

THE McCALL CO.,  
138-146 West 14th St., New York.

C. M. SAGESER,

## TONSORIAL ARTIST

Hair cutting and shaving.  
HOT AND COLD BATHS.

## The OWL SALOON

Golden Sheaf Pure White Rye, Susquehanna Rye, and Cedar Creek Louisville, Kentucky, Bourbon Whisky. Pure Grape & Cognac Brandy's

..... Wines.....  
Toka, Angelica, Port, Sherry and Black berry in wood, claret, Riesling, Sauternes. Cocks Imperial; Gasts and Cliequot in bottles. Damiana and other Cordials.

Also Agent for Fred Krugs Celebrated Extra Pale Beer for family use, and Pabsts Export Beer

C. H. THOMPSON, Proprietor