

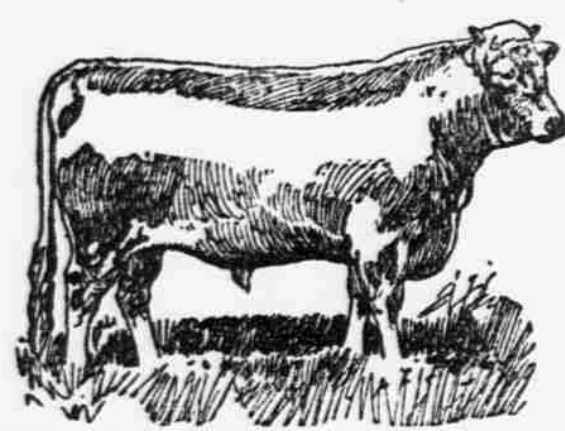
FLATO COMMISSION COMPANY

LIVE STOCK SALESMEN AND BROKERS
Capital \$100,000.00

Directors:
F. W. FLATO, JR., President,
PAUL FLATO, Vice President,
J. C. FAULMAN, Secretary,
JOHN D. SEITZ,
ED. H. REID.

Salesmen:
ED. H. REID (Cattle Salesman),
JIM S. HORN (Cattle Salesman),
E. W. CAHOW (Hog Salesman),
HUGH HITCHCOCK (Sheep Salesman),
JOHN P. CLARY, Cashier

SOUTH OMAHA, NEBRASKA
Correspondents:
DRUM-FLATO COMMISSION COMPANY
Capital \$500,000.00.
CHICAGO. KANSAS CITY. ST. LOUIS



STOCK EXCHANGE RESTAURANT.
OPEN DAY AND NIGHT.
E. T. MILLER, Proprietor.
—LODGING FOR STOCKMEN—
40 NEWLY FURNISHED ROOMS.
South Omaha.

RATES:—\$1.00 to \$1.50 Per Day.
\$5.00 to \$7.00 Per Week.
Telephone No. 67

REED HOTEL.
MRS. JOHN REED, Proprietress.
STOCKMEN'S PATRONAGE ESPECIALLY SOLICITED.
5th St. Between L and M Streets. South Omaha, Nebr

A Few Facts For Cattle Dealers.

It has been repeatedly demonstrated in the past that

STANDS AT TOP AS A MARKET FOR RANGE FEEDERS

You can satisfy yourself as to the truth of that statement by comparing the sales at Sioux City, last year, with those at any other competitive market. You can also ask your neighbors who have sold cattle at Sioux City. This year Sioux City is in the field for fat cattle as well as feeders. The great beef slaughtering plant of the Cudahy Packing Co. is ready for business.

The capacity of the Stock Yards has been greatly increased and you will find excellent facilities for handling your business.

No charges, except for feed ordered if your cattle are not sold on our market.
The Sioux City Stock Yards Co.
JOHN H. KEENE, General Manager.

Millinery

and Ladies' Furnishing Goods
CALL AND GET PRICES.
CORA GILLETT.

COX, JONES & COX
LIVE STOCK
COMMISSION MERCHANTS
SOUTH OMAHA, NEBRASKA
Room 108 Exchange Bldg.

References: **UNION STOCK YARDS NATIONAL BANK** and **PACKERS' NATIONAL BANK.**
Telephone 141
We have a large clientele among Nebraska feeders and can always beat Omaha prices to Ranch customers IF NOTIFIED BEFORE SHIPMENT.

MRS. HARRIS BOARDING HOUSE AND BAKERY.
Fruits and Confectionery
Meals at all hours.
Price, 25 cent. First door South of Valentine Bank.

The DONOHER
is continually adding improvements and it is now the best equipped, and most comfortable
FIRST-CLASS MODERN HOTEL
IN NORTHWEST NEBRASKA
Hot and Cold Water Excellent Bath Room Two Sample Rooms

CHERRY COUNTY BANK
Valentine, Nebraska
Every facility extended customers consistent with conservative bank practice. Loans upon good security solicited at reasonable rates. County depository.
E. SPARKS, President CHARLES SPARKS Cashier

WESTERN NEWS-DEMOCRAT

ROBERT GOOD, Editor and Publisher

Capt. Fisher and five other republicans are being read out of the party. How sad!

The Rushville Standard is supporting Judge Westover for congress. We had heard it rumored that the editor of the Standard would himself be a candidate, but this seems to be a mistake.

Once more we wish to call the attention of our newspaper friends to the action of Senator Reynolds in working for the reduction of printer's fees. Some of them should look over their files and changing the name of Mutz to that of Reynolds in certain editorials should reproduce them at this time.

Governor Poynter has issued a proclamation designating Saturday, April 22, as Arbor Day. From the proclamation we select the following sentences: The planter of grain plants for himself. The planter of trees plants for others. The one plants for the present, the other for the future. Let each school boy plant at least one tree, which may be a shade for his noontime of life. Let every young man plant a tree which may be a comfort in after years. Let every man of middle life plant a tree, which may grow into a monument of his foresight when his other work shall have been forgotten.

New Zealand has a population of some 700,000. Her railways are not only owned by the state, but nearly all were built by the state. The experiment has been a long one, dating back to 1863. The number of miles of railway in operation in 1893 was 1,886. The net profit for the year 1893 was \$2,246,900. The wages of the employees average 30 per cent higher than those paid in the railways of the United States. You can ride 30 miles for 10 cents. The annual profits from the railroads, postal telegraph, telephone and express are sufficient to pay all federal taxes.—Southern Mercury.

Before the investigating committee Monday, Judge Norval was confronted with proofs and admitted that he received from the state treasury while Bartley was treasurer, \$625 for one of his warrants, and ten months later drew about \$35 interest on this warrant which had been paid. This shows up bad for Norval, and the fact that a member of our highest tribunal has admitted himself to be guilty of so questionable a transaction in state funds will cause all true citizens to blush with shame. And Judge Norval admitted that he had done this same thing "possibly one other time, but not often."

A couple of weeks ago we were treated to dispatches announcing that thousands of Filipinos had laid down their arms, and that fighting was about over. Almost simultaneously came a request for more American troops, and the last ten days have witnessed fighting which has discounted the battles in Cuba, and for the first time since trouble with Spain began, the papers were forced to announce Saturday, the American troops suffered more severely than did their opponents. Of course there is no doubt regarding the ultimate outcome of the war, but think of the hundreds, aye, thousands of lives which will be needlessly sacrificed in our attempt to "benevolently assimilate" and christianize the Philippines. Seems to us that Uncle Sam got a Tartar when he paid \$20,000,000 for the islands, and we believe he would now be willing to pay \$20,000,000 more to get them off his hands if he could do so without making himself look foolish to the balance of the world. The "statesmanship" of the present administration is a wonderful thing.

The state legislature adjourns tomorrow after about seventy sessions. This legislature has been more prolific of rotten political schemes than any other ever held in this state, and practically no legislation has as yet been enacted. In this respect perhaps the legislature is to be congratulated. The hypocrisy of the republican majority has been plainly shown, so far as we know not one of their campaign pledges having been redeemed. The revenue laws have not been revised, and the republican beet sugar bounty has not been paid. Perhaps this hypocrisy was more plainly shown in the matter of investigating committees than in any other way, though. Not one of the fusion members objected to the investigation of the auditor's office, they instead assisting the more in every way. But when it came to investigating of the republican supreme court, all kinds of tactics were resorted to for the purpose of defeating the motion, or at least appointing a "whitewash" committee, and the senate went so far as to defeat a motion to appoint a committee. This is a stain upon the republican party which it will not soon wash away.



Clough & Co., of Sioux City, sold 112 head of young cattle to Mumford Bros. this week 70 head to W. F. Morgaridge and 75 or 80 to John Shelbourn. The prices ranged from \$30 to \$35 per head.

H. T. Braddock having fed all the feed available on Beaver Valley has brought about ninety head of cattle into town and will have them cared for near town. He had saved only one calf up to the time of bringing the cattle in.—Chadron News.

C. J. Hysham arrived from South Omaha Wednesday night with 500 head of cattle which he will range for a while on the ranch near Lapeer and will then send them out on the Wyoming range. He has purchased for summer delivery over 40,000 head of cattle in Montana, a greater part of which he will offer for sale in various parts of the state.—Alliance Grip.

Four years ago Nebraska fed 400,000 sheep and lambs. "And all the world wondered." A year later 500,000 went to the shambles from her feeding pens and the prophets were sure the limits had been reached. The next year with a mutton and lamb crop of more than 600,000 head. Last year close to 800,000 head went to market, and on the highest western authority—the National Live Stock association this state of wondrous possibilities and surprises is accredited with a round 1,000,000 feeding sheep and lambs.

The great loss of cattle which has already taken place over the western range districts, owing to the unusual severity of the present winter, and the additional loss that must follow before cattle are safely started on grass means an additional factor in creating more price and adding eventually to the interest and investment in cattle raising. These unfortunate conditions, when followed by increased demand and price only stimulate the western stockman to renewed effort in regaining his lost possessions. More and better winter provision will be prepared and better breeding cattle will be demanded to fill up the depleted herds of the range. We predict a safe business in the cattle raising industry for many years where proper conditions are observed.—World-Herald.

A prominent live stock commission firm has sent out the following advice to its customers: "The government report, issued several weeks ago, which is the most reliable report we have, indicates the lightest number of cattle in over ten years. We know of no locality in the entire west where there are as many cattle on feed as there were a year ago now. We believe that feeders will have no cause for regret in making cattle finished right through the year. Cattle that have not been forced in by the cold weather will hardly be forced on the market now, as feeders will take chances of finishing their cattle on grass, which is only a few weeks off, rather than accept any further decline in values. We look for 250,000 less hogs in April, May and June than for the same months last year, when we received for the three months 2,240,000. As packers are not cutting any hogs into speculative meats this month, stocks of provisions should show a good decrease the first of next month, and we can see nothing now to depress prices of hogs."

At Fort Worth, Texas, a good many two-year-old cattle were sold during the stockmen's convention at \$23 per head. Prices were \$1 to \$2 lower than last year. Kansas and Nebraska buyers were not numerous.

The foreign demand for American cattle has fallen off seriously. Only 19,015 cattle were exported from this country during February, against 37,136 in the same month last year, and the exports during the eight months ending with February were 197,141 cattle, as compared with 279,783 for the like period in 1897-98, a decrease of 82,642 head.

The Fort Worth, Texas, stockmen's convention voted unanimously to send no more cattle to the Chicago market until the terminal charge of \$2 a car is removed. This action is a natural result of the hostile feeling which prevails all over the country regarding this stockyard charge—a charge that is building up other western markets at the expense of Chicago. It is generally thought that the new stockyard management will abolish this unpopular embargo on business before long.—National Stockman.

CITIZENS - MEAT - MARKET

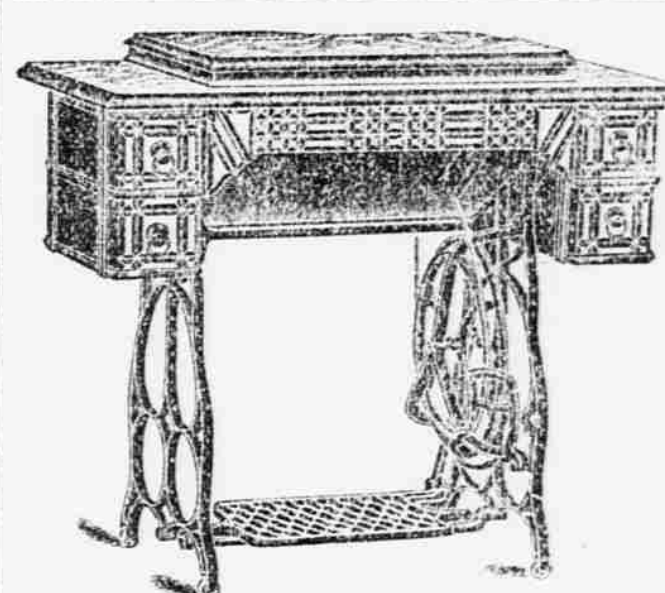
GEO. G. SCHWALM, PROP.

This market always keeps a supply of

FRESH - FRUIT - AND - GAME

In addition to a first-class line of Steaks, Roasts, Dry Salt Meats
Smoked Hams, Breakfast Bacon and Vegetables
At Steeter's Old Stand on Main Street. VALENTINE, NEBRASKA

THE PALACE SALOON
HEADQUARTERS FOR
WINES, LIQUORS AND CIGARS
Of the Choicest Brands
VALENTINE NEBRASKA



Why Pay \$30.00

For a drop-head machine when you can get a first-class machine for \$21.00 by writing to
I. H. EMERY,
Valentine, -Nebr.

Hides Wanted

Highest market price paid and prompt returns. Reference—Omaha National Bank.

F. S. BUSH & COMPANY.

513 South 13th St., OMAHA, NEB

We charge no commission.

C. H. CORNELL, President. M. V. NICHOLSON, Cashier

BANK OF VALENTINE.

Valentine, Nebraska.

A General Banking Business Transacted
Buys and Sells Domestic and Foreign Exchange

Correspondents: Chemical National Bank, New York. First National Bank, Omaha Nebr

Some two years ago Rev. E. P. Quivey was in Valentine and secured pledges from a number of persons who agreed to pay \$5.00 per year for five years to assist in carrying on the work of the Nebraska Child-saving Association whose headquarters is at Omaha.

A branch committee was arranged here with Rev. Holsclaw as president and Mrs. Cora Sherman as secretary. Since its organization this committee has met on the first Tuesday of each month, but from now on the committee will meet on the second Tuesday of each month.

It is the duty of this committee to find good christian homes for homeless children. When a homeless child is found the committee pay its board in some private family until a family is found who will adopt it and give it a good education. This seems to be the ideal way of caring for homeless children.

The committee has been doing some good work since its organization. Only last week the members got together and made clothes for a six-months old babe they had been boarding in Valentine and sent it to a good family where it will be adopted and well cared for. No effort has been made to raise funds except the payments on the pledges made when Rev. Quivey was here; however if any one feels interested enough to wish to help in the work, Mrs. O. W. Morey, the treasurer, will duly receipt for all contributions.

AN INTERESTED MEMBER.

If You Want to Buy or Sell

Live Stock, make your wants known to the
Cherry Co. Live Stock Exch.
Valentine, Nebr.

Feed in Transit at Fremont

Capacity:—Sheep, covered sheds, 24 cars; open pens, 15,000. Cattle 28 cars
The place to rest and feed for the Omaha market.
Easy run to feeding points outside Chicago.
Long distance telephone.
Write or wire when you will arrive, to
Fremont Stock Yards Co

The OWL SALOON

Golden Sheaf Pure White Rye, Susquehanna Rye, and Cedar Creek Louisville, Kentucky, Bourbon Whisky. Pure Grape & Cognac Brandy's

..... Wines.....
Tokai, Angelica, Port, Sherry and Black berry in wood, claret, Riesling, Sauternes. Cooks Imperial; Gasts and Cliequa in bottles. Damiana and other Cordials.

Also Agent for Fred Krugs Celebrated Extra Pale Beer for family use, and Pabsts Export Beer

C. H. THOMPSON,
Proprietor

THE PIONEER STOCK FARM

Mammoth Spanish Jacks, Poland China and Chester White Hogs, Plymouth Rock Chickens and

GALLOWAY CATTLE

REGISTERED BULLS FOR SALE
J. H. McALLISTER
Joy, Holt Co., Nebr.

THE STOCKMAN.

Wm. M. Walters, Prop.
THE FORD - - NEBRASKA.

Strayed or Stolen.
One blue gelding, 4-yr old, weight about 700 lbs. One white mare about 12-yr old, has brand on left shoulder (design not known) with 2-yr old colt following, bay, with white face. Liberal reward for information.
F. MOGLE, Coody, Nebraska.