

# FLATO COMMISSION COMPANY

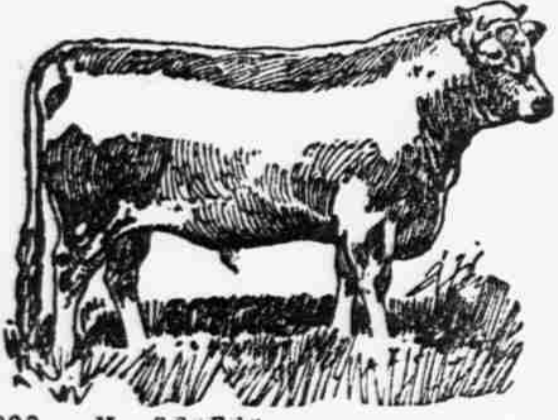
LIVE STOCK SALESMEN AND BROKERS  
Capital \$100,000.00

Directors: F. W. FLATO, JR., President.  
PAUL FLATO, Vice President.  
J. C. DAHLMAN, Secretary.  
JOHN D. SEITZ.  
ED. H. RIED.

Salesmen:  
ED. H. REID, Cattle Salesman  
JIM S. HORN, Cattle Salesman  
E. W. CAHOW, Hog Salesman  
HUGH HITCHECOCK, Sheep  
JOHN P. CLARY, Cashier

## SOUTH OMAHA, NEBRASKA

Correspondents:  
**DRUM-FLATO COMMISSION COMPANY**  
Capital \$500,000.00.  
CHICAGO. KANSAS CITY. ST. LOUIS



**STOCK EXCHANGE RESTAURANT.**  
OPEN DAY AND NIGHT.  
E. T. MILLER, Proprietor.  
---LODGING FOR STOCKMEN---  
40 NEWLY FURNISHED ROOMS  
South Omaha.

RATES:—\$1.00 to \$1.50 Per Day.  
\$5.00 to \$7.00 Per Week.

Telephone No. 67

# REED HOTEL.

MRS. JOHN REED, Proprietress.

STOCKMEN'S PATRONAGE ESPECIALLY SOLICITED.

5th St. Between T and M Streets.

South Omaha, Nebr.

## A Few Facts For Cattle Dealers.

It has been repeatedly demonstrated in the past that

# SIoux CITY IA.

Stands at top as a market for Range Feeders

You can satisfy yourself as to the truth of that statement by comparing the sales at Sioux City, last year, with those at any other competitive market. You can also ask your neighbors who have sold cattle at Sioux City. This year Sioux City is in the field for fat cattle as well as feeders. The great beef slaughtering plant of the Cudahy Packing Co. is ready for business.

The capacity of the Stock Yards has been greatly increased and you will find excellent facilities for handling your business.

No charges, except for feed ordered if your cattle are not sold on our market

## The Sioux City Stock Yards Co.

JOHN H. KEENE, General Manager.

## Millinery

and Ladies' Furnishing Goods  
CALL AND GET PRICES.  
**CORA GILLETT.**

# COX, JONES & COX

LIVE STOCK  
COMMISSION MERCHANTS

SOUTH OMAHA, NEBRASKA  
Room 108 Exchange Bldg.

UNION STOCK YARDS  
NATIONAL BANK

PACKERS' NATIONAL  
BANK.

References:  
Telephone 141

We have a large clientele among Nebraska Feeders and can always meet Omaha prices to Ranch customers IF NOTIFIED BEFORE SHIPMENT.

## MRS. HARRIS BOARDING HOUSE AND BAKERY.

Fruits and Confectionery  
Meals at all hours.  
Price, 25 cent.  
First door South of Valentine Bank.

# The DONOHER

x x x

is continually adding improvements and it is now the best equipped, and most comfortable

FIRST-CLASS MODERN HOTEL  
IN NORTHWEST NEBRASKA

Hot and Cold Water Excellent Bath Room Two Single Rooms

# CHERRY COUNTY BANK

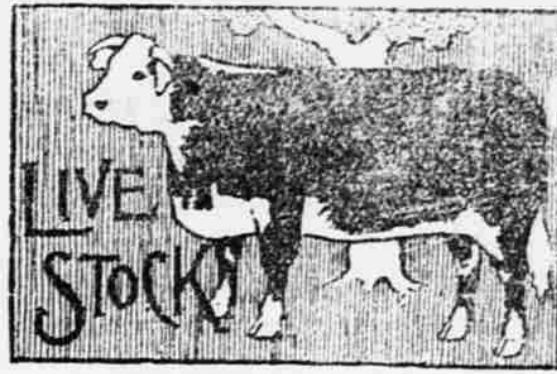
Valentine, Nebraska

Every facility extended customers consistent with conservative banking principles. Loans on good security solicited at reasonable rates. County depositories.

B. SPARKE, President CHARLES SPARKE, Cashier

## WESTERN NEWS-DEMOCRAT

ROBERT GOOD, Editor and Publisher



The Dingley bill, to enact which a special session of congress was called, continues to produce a handsome deficit each month. Did you ask the remedy? More bonds, of course.

State Senator Reynolds has been bending his energies in an effort to cut in two the price paid to newspapers for legal work. We wonder how those republican newspapers which supported the senator like this slap in the face?

The capital stock of trusts organized during the two years of the McHanna administration at Washington, amounts to about ten times as much as during any other administration of four years. And they say the administration is opposed to trusts and is the friend of the poor man!

There may be many signs of prosperous times visible in the heavens and on earth, but the high price of seats on the New York stock gambling exchange is not one of them. If speculators who live by fleecing the public, are prospering, we do not consider the fact of any particular advantage to the people at large. Do you?—Farm Journal.

The beef commission tasted some good canned beef which was said to have been brought back from Porto Rico to Chicago. It isn't that kind the boys and Miles are kicking on; it is the rotten stuff they had to eat that made them sick. A million good cans won't make one bad can good. Stick to the text. The committee is up to Chicago looking through the factories. And what are factories, processes, or anything else, in the case? The question is, did the boys have rotten beef issued to them?—Delphos (Ohio) Courant.

The government owns the telegraph lines in Chili. As a natural consequence the Chilians are able to send messages at 8 cents each as against 25 cents for the cheapest message in the United States. This fact is good and sufficient evidence from the standpoint of monopolists that the Chilians are unable to govern themselves. Here is another chance for Uncle Sam to take up the white man's burden and destroy this object lesson before the contagion has opportunity to spread.—J. W. Wilson.

The demo-pops after hugging themselves for causing the republican administration to declare war against Spain, with wonderful consistency raise thunder over the increased appropriations, \$482,000,000 of which was for the war.—Rushville Recorder.

No demo-pop complains of the legitimate increase on account of the war, but the Recorder maliciously hides the fact that after deducting the \$482,000,000 war budget the expenditures of the republican congress lately ended exceeded by about \$100,000,000 those of any other congress. And in addition to all this we are still licking stamps and paying increased internal revenues on all kinds to prosecute the war. It is this that the demo-pops are kicking about.

During the last year of Cleveland's administration the country recovered its normal condition and Mr. McKinley stepped to the front and bowed. It is two years since then and the estimated deficit for the year ending June 30, 1890, is ascertained to be more than one hundred millions of dollars. There has been one big bond issue and another will have to be floated to continue the expenses needlessly incurred. Certainly such things cannot continue unchecked, and of course there will have to be a change in administration to check them. During the democratic administration to follow the present one, the same results must follow that fell on Mr. Cleveland. The only question is, will poor people again fail to realize the true cause and wait for its remedy.—Alliance Grip.

The observant reader must be familiar with the fact that the supreme court has decided that the Railroad Joint Traffic Association is illegal, and that, in consequence, said association has disbanded. It is all right to disband, but ought not the gentlemen composing that body, who have for years been violating the constitution and laws of the land, be punished for their wrongdoing? The chicken thief is not allowed to go scott free on the simple promise to rob no more hen roosts. But we are so familiar with the illegal acts of big criminals that we follow another course with them. Of course, the Traffic Association, though dead, will not quit its wrongful acts, but will endeavor to move congress to fix the law to suit; if they succeed in this well and good; otherwise, according to the advice of a Wall street oracle "there is another method of meeting the decision by the railroad managers." Farm Journal.

Mr. Sherman of this place has suffered the greatest loss of sheep that we yet learned of. Within the last few weeks he has lost very near four hundred sheep, which was about one-third of his bunch. He returned from his ranch a few days ago, and states that the loss of himself and partner together was between \$1,400 and \$1,500. Harmon Press.

Fall prices for all sorts of hides are now demanded by the big cattle slaughterers, their strength being based upon the diminished offerings. The receipts of cattle at the five principal western markets where cattle are slaughtered were during January and February 90,000 head less than during the same period last year. March hides are regarded as the worst of the year, but poor as they are they are selling at the present time without any difficulty at strong prices.

Regarding the sides of beef on the spring market the Dakota Farmer says: "The South Dakota cattlemen who have good beeves to send to market this spring ought to take much comfort from the statement of Carey McMain, of Wellsville, Kansas, a man who has been in the cattle business in Kansas the past thirty-one years and has an extended acquaintance among cattlemen. He says: "From the best information I can gather, Kansas will not furnish one-half her usual output of good beeves this spring."

Through an oversight last week we omitted publishing the following interesting stock item taken from the Gordon Journal: "The Niobrara Land & Sheep Company, of Gordon, was organized this week. This company is regularly incorporated with \$10,000 capital stock, \$10,000 of which is now paid up. The officers are O. H. Johnson, president; Fred Hoyt, secretary; Edgar Morrison, treasurer and John M. Barto, general manager. The affairs of the company will be managed by a board of five directors as follows: O. H. Johnson, Edgar Morrison, J. M. Barto, Fred Hoyt, and N. W. Hellely. The company has bought and leased two full townships of lands, extending from Gordon to the Niobrara river. They expect to stock this land with sheep, employ men and teams to plant and raise fodder and other rough feed, and engage in sheep raising on an extensive scale. They are sanguine of success. Mr. Barto, the general manager has made a comfortable fortune in the sheep business in the last five years."

An old settler who is writing for the Chadron News, says of the season of 1880:

The summer of 1880 was very dry and the grass was shorter than usual. The hay crop was practically a failure with those who were accustomed to putting up small quantities for feeding through a few days of bad weather. In the latter part of October we had a heavy fall of snow, which laid on the ground a few days, when the wind blew from the west and we were treated to a genuine chinook, which caused much rejoicing among those interested in cattle, but just as the snow was melted into a slush and the low level places covered with water, the weather very suddenly turned extremely cold and the slush and water became ice; and then it snowed for days, until the ground was covered from six inches in some localities to two feet in others, and the ice underneath remained until spring. In the locality where I was the winter did not really break until the 14th day of April, and the weather for over five months was continually bad very much like it was during the month of February this year, but with more snow with extreme cold for days and weeks at a time, and then more moderate for a few days with the sun warm enough to melt the snow a little, and then again severely cold forming crusts with squalls of snow accompanying each change. I saw thousands of head of cattle with bleeding legs made raw by tramping through the crusts of snow. When spring came every sheltered spot contained dead cattle.

The Dallas Journal has made a careful canvass through its army of agents, of the losses by the storms and cold in that state. It is prepared to state that the losses among cattle on the open prairies in the coast country, where they were without other feed than the native grasses are from 10 to 15 per cent. From the southwest, where much feeding is done, the losses are less, and almost equally favorable results are brought from the western and northwestern part of the state where it will not exceed 10 per cent and confined to cows and young calves, and to eastern and southern cattle shipped in late and too low in condition to withstand an ordinary winter.

# CITIZENS - MEAT - MARKET

GEO. G. SCHWALM, PROP.

This market always keeps a supply of

# FRESH - FRUIT - AND - GAME

In addition to a first-class line of Steaks, Roasts, Dry Salt Meats  
Smoked Hams, Breakfast Bacon and Vegetables  
At Stetter's Old Stand on Main Street. VALentine, NEBRASKA

**THE PALACE SALOON**  
HEADQUARTERS FOR  
WINE, LIQUORS AND CIGARS  
Of the Choicest Brands  
VALentine NEBRASKA

Why Pay \$30.00  
For a drop-head  
machine when you  
can get a first-class  
machine for \$21.00  
by writing to  
**I. H. EMERY,**  
Valentine, -Nebr.

**Hides Wanted**  
Highest market price paid and prompt returns. Reference—  
Omaha National Bank.  
**F. S. BUSH & COMPANY.**  
513 South 13th St., OMAHA, NEB  
We charge no commission.

C. H. CORNELL, President. M. V. NICHOLSON, Cashier  
**BANK OF VALENTINE.**  
Valentine, Nebraska.  
A General Banking Business Transacted  
Buys and Sells Domestic and Foreign Exchange  
Correspondents: Chemical National Bank, New York. First National Bank, Omaha, Nebr.

The past winter has generally been a very disastrous one to sheep feeders, especially those who went into the business on a large scale and had to buy their feed. In the first place they had to pay too much for their feeding stock. Sheep and lambs were sold and bought on extravagant expectations as to the future market and these have not been realized by a long shot. High priced feeding stock, advancing prices for corn, screenings and mill feeds, and declining markets for fat stock are a combination that it is almost impossible for the feeder to beat. National Stockman

The Dallas Journal has made a careful canvass through its army of agents, of the losses by the storms and cold in that state. It is prepared to state that the losses among cattle on the open prairies in the coast country, where they were without other feed than the native grasses are from 10 to 15 per cent. From the southwest, where much feeding is done, the losses are less, and almost equally favorable results are brought from the western and northwestern part of the state where it will not exceed 10 per cent and confined to cows and young calves, and to eastern and southern cattle shipped in late and too low in condition to withstand an ordinary winter.

If You Want to Buy or Sell  
Live Stock, make your  
wants known to the  
**Cherry Co. Live Stock Exch.**  
Valentine, Nebr.

Feed in Transit at Fremont  
Capacity:—Sheep, covered  
sheds, 24 cars; open pens, 15,000.  
Cattle 28 cars  
The place to rest and feed for  
the Omaha market.  
Easy run to feeding points outside  
Chicago.  
Long distance telephone.  
Write or wire when you will arrive, to  
**Fremont Stock Yards Co**

# The OWL SALOON

Golden Sheaf Pure White Rye,  
Susquehanna Rye and Cedar Creek  
Louisville, Kentucky, Bourbon Whisky,  
Pure Grape & Cognac Brandy's  
..... Wines.....  
Tokay, Angelica Port, Sherry and Black  
berry in wood, claret, Riesling,  
Sauternes, Cocks Imperial,  
Gasts and Chiquet in bot-  
tles, Damiana and other  
Cordials.  
Also Agent for Prad Krugs Celebrated Ex-  
tra Ale Beer for family use, and Pabst's  
Export Beer  
**C. H. THOMPSON,**  
Proprietor

**THE PIONEER STOCK FARM**  
Mammoth Spanish Jacks, Poland  
China and Chester White Hogs,  
Plymouth Rock Chickens and  
**GALLOWAY CATTLE**  
REGISTERED BULLS  
FOR SALE  
**J. H. McALLISTER**  
Joy, Holt Co., Nebr.

**THE STOCKMAN..**  
Wm. M. Walters, Prop.  
**THEFORD - - NEBRASKA**  
**Strayed or Stolen.**  
On-blue gelding, 4-yr old, weight about 700  
branded horse shoe on left shoulder. One  
white mare about 12-yr old, has brand on left  
shin (her design not known) with 2-yr old colt  
following; bay with white face. Return reward  
for information.  
F. M. Co.  
Cody, Nebraska.