

a **WONDERFUL SPREAD**

OPEN TIL 9 EVERY NITE!
and You're **MONEY AHEAD**

PLAY JACKPOT
FINAL WEEK TO COLLECT YOUR TAPES
Winning Number Will Be Paid Through Next Week On This Weeks Tapes

LIBBYS SUGAR

PEAS

2 **25**^c

No. 303 Cans

USDA Choice - Arm Cut **SWISS STEAK** POUND **59c**

USDA Choice 7-BONE STEAK POUND **49c**



VALLEY HI — FROZEN SLICED **STRAWBERRIES** 4 16 OZ. PKGS. **\$1**

SMUCKER'S STRAWBERRY **PRESERVES** 12 OZ. JAR **29c**

LIBBY'S **Golden CORN**

Whole Kernel or Cream Style

2 **25**^c

No. 303 Cans

LIBBY'S SLICED HALVES **PEACHES**

2 **49**^c

Big No. 2 1/2 Cans

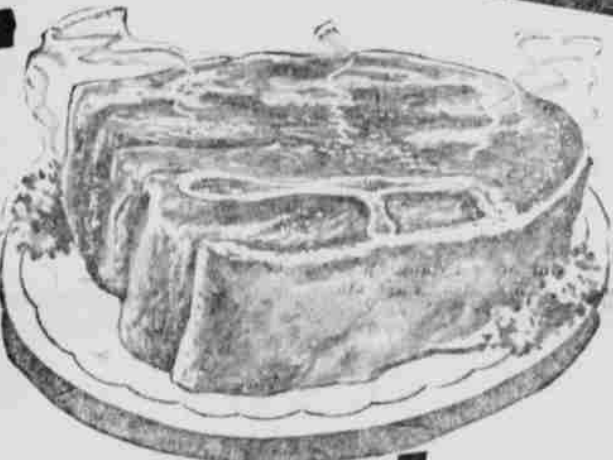
- Hy Klas — Liquid **DETERGENT** 22 oz. Btl. **39c**
- Hy Klas — Smooth or Chunky **PEANUT BUTTER** 3 Lb. Jar **99c**
- Pillsbury Pink & Pretty Angel Food **CAKE MIX** Pkg. **39c**
- Skinner's — Cut Spaghetti or **MACARONI** 2 Lb. Bag **35c**
- Whitney's **CHUM SALMON** Pound Can **49c**

BEEF ROAST

USDA Choice **BLADE CUT**

27^c

POUND



USDA Choice **SIRLOIN STEAK**

7-Bone Roast Lb. 37c

Arm Cut Roast Lb. 47c

POUND **79c**

HY KLAS **TOMATO JUICE**

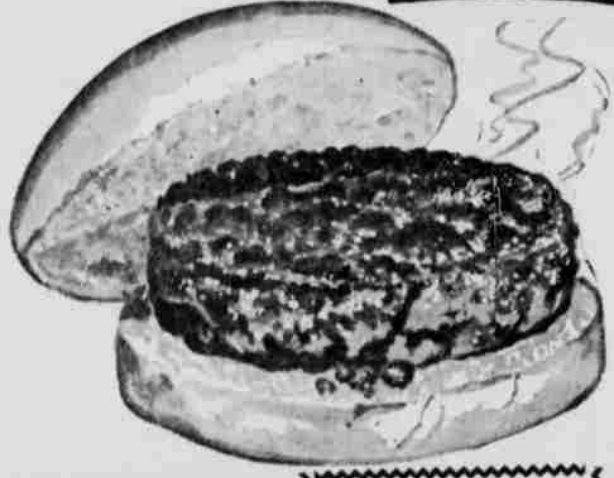
46 oz. Can **19**^c



Lovely - King Size Fiberglass **TV TABLE SETS**

\$496 With total of \$25.00 in Register Tapes Dated After June 19

Complete Set of 4 Trays Including Server



GROUND BEEF

Freshly Ground None Finer At Any Price

Pound **39**^c

DEL MONTE — CHUNK **TUNA**

2 **49**^c

Reg Cans

ROOM COOLERS

PORTABLE — 2 SPEED — 20"

\$13⁸⁸

EACH

With total of \$25.00 in Register Tapes Dated After June 19



QUALITY PHOTOFINISHING

FAST - FAST SERVICE
When You Bring Your Film To Ruback's For Finishing

- BLACK & WHITE Finishing Special All 8-12 Exposure Rolls Developed & Printed as Jumbo Prints **49**^c
- COLOR MOVIE & SLIDE SPECIAL 35mm Kodachrome or Ektachrome - Developed and Slide Mounted, 8mm Kodachrome Movie Film **99**^c
- KODACOLOR COLOR PRINT SPECIAL All 8-12 Exposure rolls of Kodacolor Film Developed & Printed as Beautiful Jumbo Prints **\$1.99**

Butternut Instant **COFFEE**

6 oz. Jar **69**^c

KRAFT MILD AMERICAN **Spaghetti DINNERS**

8 oz. Box **110**^c

TOMATOES

GARDEN FRESH — RED RIPE

119^c

Cello Tube



RUBACK'S SUPER MARKET

Grocery prices effective thru Thurs. July 11th. Fresh Meat & Produce prices effective thru Sat., July 6th. We reserve the right to limit quantities.

These prices effective on film brought in through July 15th.