



WATCHIN'—Keeping a wary eye out for developments during Plattsmouth's football opener last Friday were, from left: assistant coach Bob Humphrey, coach Norris Hale, halfback Jack Scott and manager Butch McGraw. —Photo by Frank Grimaldi.



Y-A-A-A-A-Y!—Plattsmouth cheerleaders Nancy Bulin, Betty Newsom and Valerie Gorton, caught during an exultant moment in last week's football opener, from left, are Sally Lebens, —Photo by Frank Grimaldi.

Plattsmouth Eyes Revenge At Beatrice Friday Night

The probable starting lineups:

Beatrice (1-1)				
Player	Pos.	Wt.	Class	
Gilbert Paben	LE	160	12	
Mike Fisher	LT	220	12	
Richard Gartner	LG	160	11	
Larry Henderson	C	157	12	
Micki Martin	RG	144	12	
Ross Bauman	RT	186	12	
Jim Grapegeter	RE	168	12	
Richard Hamer	QB	152	11	
Garry Lutz	LH	138	12	
Bob Weick	RH	161	12	
Jim Rikil	FB	172	12	
Plattsmouth (0-1)				
Fred Groce	LE	190	12	
Roger Beverage	LT	215	11	
Charles Keppard	LG	155	12	
Dick Johnson	C	165	11	
Al Konrat	RG	160	12	
Larry Cadwell	RT	170	12	
Dave Nettelmann	RE	175	11	
Jack Scott	QB	160	11	
Bill Nettelmann	LH	145	11	
Marvin Lancaster	RH	155	10	
	FB	180	10	

Plattsmouth's Blue Devils will travel to Beatrice Friday night for their second contest of the season after bowing to Crete 20-0 last week.

The visiting Blue and White gridders will be out to gain revenge for a 25-21 setback last year. The Orangemen won the fray on the final play of the game here.

Coach Norris Hale reports that there are no injuries in the Blue Devil camp and that 32 PHS footballers will make the trip and will leave from the high school at 3:45 p.m. Friday.

The opening kick off is set for 8 p.m.

The PHS team has concentrated on correcting defensive mistakes this week but has also added several new offensive plays. Coach Hale indicated that the Blue Devils should be much stronger defensively this week.

The Plattsmouth starting offensive lineup is the same as last week and Dennis Adams and Gene Noell will serve as defensive halfbacks. A pair of juniors, Ron Adkins and Dennis Horn, were added to the defensive platoon this week. Adkins will take over an end spot. The PHS coaching staff was pleased with Horn's showing against Crete.

Line coach Cecil McKnight also singled out Captains Al Konrat and Fred Groce for their defensive performance against the Cardinals.

Coach Hank Reichel's Beatrice eleven gained a 6-6 deadlock with Crete in the opener and dropped a 19-13 test to the Falls City Tigers last week. Fullback Jim Rikil is the mainstay of the Orange offense, according to scouting reports.

In addition to the starting offensive lineup, the following will make the trip:

Ends—Ron Adkins, Dan Schultz, Roger Lanum, Bob McClanahan and Tom Brink.

Tackles—Rodney Fleck, Kenny Rhylander, Ray Spencer and Rolland Hild.

Guards—Jim Gruber, Mike Brink, Kenny Nuzum and Dennis Horn.

Centers—Walter Yenny and Dale Gerdes.

Backs—Tom Hansen, Dennis Adams, Gene Noell, Kenny Hostetter, Orval Alber and Tom Dillon.

Reserves Rally But Bow, 25-13

Nebraska City's reserve footballers won a 25-13 verdict over the Plattsmouth Junior Varsity team on the local field Tuesday night.

Blue Devil quarterback Tom Hansen scored on a sneak to cap a 63-yard drive for the first tally after the PHS eleven trailed 19-0 at half time.

Halfback Dennis Adams flipped a 24 yard aerial to Kenny Hostetter in the closing moments of the contest for the other Plattsmouth touchdown. Orval Alber plunged for the extra point.

Coach Bob Humphrey used all 38 players in the fray and singled out Roger Lanum, Ron Adkins and Kenny Rhylander for their defensive performances.

The Junior Blue Devils will travel to Louisville next Monday night for their second contest of the season.

TRACTOR CLUB

The Trouble Shooters Tractor Club met at the home of Ronald and Delbert Puls Sept. 11, at 7:30 p.m.

Members worked on tractor books so they could hand them in to our leader, Leland Meisinger.

After the meeting, Mrs. Puls served lunch.

Members of the club met at the home of our leader on Sept. 16 to have a hay ride. After the ride the members had a Weiner roast on our leader's farm.—David Kraeger, news reporter.

Savings Bond Film Shown for Rotary

The film, "24 Hours in Tyrantland," was shown to the Rotary Club here Tuesday noon at its regular meeting.

The film, provided by Frank B. Heintze, Omaha, state director of the Savings Bond Division of the U.S. Treasury Dept., featured the cast of the television series "Father Knows Best."

Heintze was present and reported on Cass County and state savings bonds sales for the year.

Orville Julian was program chairman for the day.

—Journal Want Ads Pay—

Confiscated Gun For Sale Here

Police Chief Fred Teach announced the authorization of the City Council for public sale of a confiscated ".22" caliber CUB ASTRA automatic pistol.

The gun can be inspected at the Plattsmouth Police Station, and sealed bids will be taken until 6 Sept. 27.

Proceeds from the sale will be turned over to the city treasurer.

Membership Tea
UNION (Special) — The first meeting of the Union Woman's Club will be a "Membership Tea" at the Methodist Church Oct. 3. Mrs. Lloyd Scott of Ashland will have the lesson.

NO! NO! NOT THE WHITE BUCKS



BUT!! You can dry clean everything else in just 45 minutes at the Norge Laundry and Cleaning Village

GUYS: Clean 3 sport coats and 4 pairs of slacks for only **\$2.00**

GALS: Clean 3 skirts and 5 sweaters for only **\$2.00**

Cleans all your clothes beautifully and wrinkle-free—ready to wear

A GOOD IDEA



—if you don't have 8 full pounds of dry cleaning, get together with a couple of friends and "share the load".

BE SURE TO SEE BILL CULLEN'S "THE PRICE IS RIGHT"

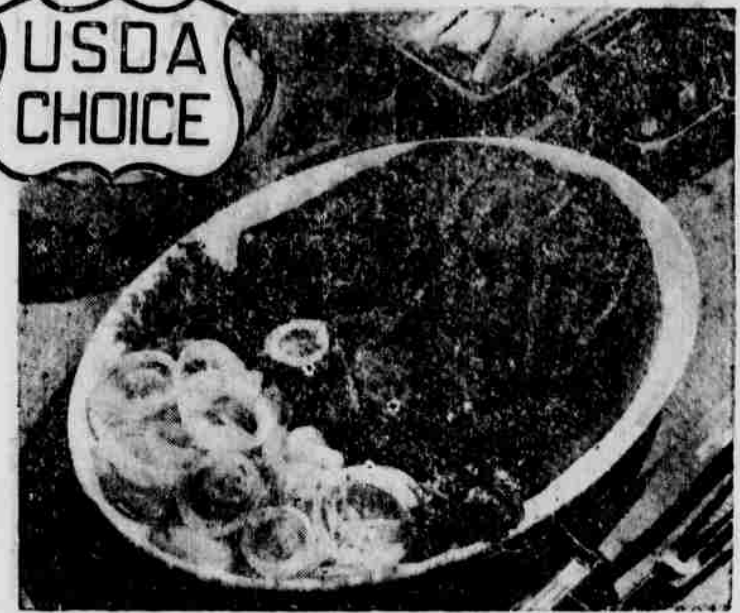
Estimate The Value Of The Sweepstakes Including **A NORGE Dry-Cleaning VILLAGE**

OPEN FROM 7:30 a.m. to 8 p.m. — 7 DAYS A WEEK

Ryan Econ-O-Wash AND Norge Dry Cleaning Village

116 So. 3rd — Plattsmouth, Nebraska — Phone 9016

Round Or Swiss Steak



H-Bar-D Corn Fed U.S.D.A. Choice Beef at the Peak of Tenderness and Flavor, Lb.

69¢

H-Bar-D Means Better Beef for You

Round Steak	U.S.D.A. Choice, Bottom Cut, Boneless, Lb.	79c
Top Round	Steak, U.S.D.A. Choice, Boneless, Lb.	89c
Rump Roast	U.S.D.A. Choice, Boneless, E.V.T., Lb.	89c
Sirloin Tip	Steak, U.S.D.A. Choice, Lb.	99c
Minute Steak	Lb.	99c
Heel of Beef	Boneless, Lb.	69c
Beef Stew	Extra Lean, Boneless, Lb.	69c
Fresh Ground Beef	Lb.	49c
Canned Picnics	Decker's Pullman Style, 3-Lb. Can	1.98
Smokies	Cudahy's Puritan, 12-oz. Pkg.	59c
Pork Sausage	Swift's Brookfield, 1-Lb. Carton	49c
Chili	Cudahy's Stick, 1-Lb. Visking Roll	49c
Bar-S Sliced Bacon	Cudahy's, 1-Lb. Tray Pack	79c
Luncheon Meat	Wilson's Spiced, Sliced, Lb.	49c
Pork Luncheon	Meat, Cudahy's Chopped, Lb.	69c

Lipton's	Pineapple-Lime Drink	29c
	Pi Li 29-oz. Can	29c
	Apple Pie Mix	33c
	Native No. 2 Can	33c
	Oreo Creme Sandwich Cookies	49c
	Nabisco 1-Lb. Bag	49c
	Spaghetti	25c
	American Beauty 16-oz. Bag	25c
	For Dishes	43c
	Calgonite 20-oz. Size	43c
	Flour	4.25
	Gold Medal 25-Lb. Bag	2.15
	50-Lb. Bag	4.25
	Cleanser	29c
	Ajax 2c Off Sale, Reg. Cans	2 29c
	5c Off Sale	30c
	Vel Large Pkg.	30c
	Cut Beets	29c
	Stokely's No. 303 Cans	2 29c
	Cut Green Beans	25c
	Stokely's No. 303 Can	25c

Hinky Dinky