

Del Monte — Bartlett  
**PEAR.S** 4 No. 303 \$1.00  
 Cans

Hormel — Luncheon Meat  
**SPAM** 12 oz. 39<sup>c</sup>  
 Can

Mandalay — Crushed  
**PINEAPPLE** 15 oz. 19<sup>c</sup>  
 Can

Hy Klas — Sections Of  
**GRAPEFRUIT** 2 No. 303 39<sup>c</sup>  
 Cans

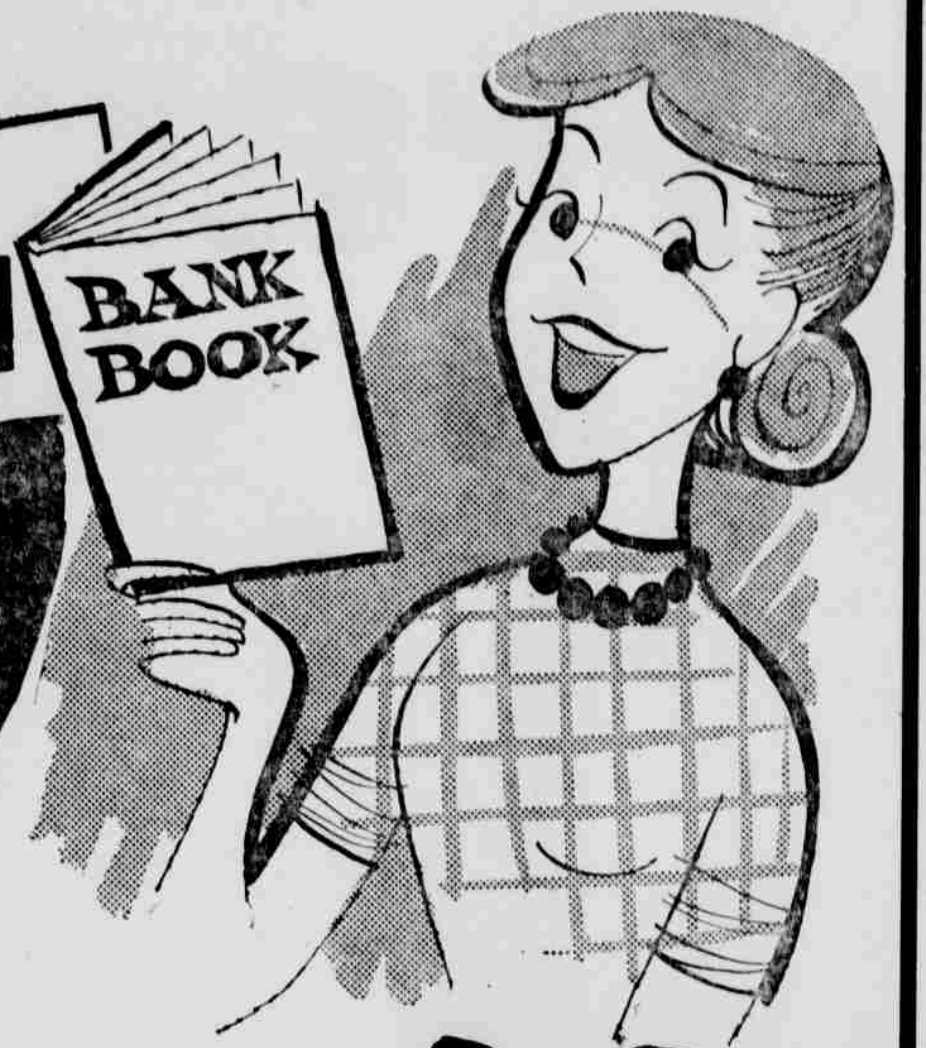
Carnation — Family Size Can  
**CHUNK TUNA** Each 39<sup>c</sup>

Hy Klas —  
**WHOLE BEETS** 2 No. 303 29<sup>c</sup>  
 Cans

Briquets Of  
**CHARCOAL** 10 Lb. 59<sup>c</sup>  
 Bag

OPEN TIL 9 EVERY NIGHT!

In My Book  
 it's **RUBACK'S**  
 for BIGGER  
 SAVINGS



HY KLAS - FRUIT  
**COCKTAIL**  
 29<sup>c</sup>  
 BIG NO. 2 1/2 CAN



HY KLAS - FANCY  
 TOMATO  
**JUICE** 46 OZ. CAN 19<sup>c</sup>

Wathena — Assorted  
**JELLY** 3 18 oz. \$1.00  
 Tumblers

Contadina  
**TOMATOES** 4 No. 2 1/2 \$1.00  
 Cans

Sportsmen — Chum  
**SALMON** Pound 59<sup>c</sup>  
 Can

Valu — Whole  
**APRICOTS** 4 No. 2 1/2 \$1.00  
 Cans

Hy Klas —  
**SALAD OIL** Quart 59<sup>c</sup>  
 Bottle

Hy Klas — Shoestring  
**POTATOES** No. 300 10<sup>c</sup>  
 Can

Aunt Jane's — Assorted  
**PICKLE RELISH** 4 12 oz. \$1.00  
 Jars

Gold Seal  
**SNOWY BLEACH** Reg. 49<sup>c</sup> 39<sup>c</sup>  
 Pkg.

Hy Klas — Liquid  
**DETERGENT** 1/2 Gal. 98<sup>c</sup>  
 Jug

Wellesley Farms  
**ICE CREAM** 1/2 Gal. 59<sup>c</sup>  
 Ctn.

Hot Dog or Hamburger  
**HY KLAS BUNS** Pkg. Of 8 19<sup>c</sup>

HY KLAS — Frozen  
**ORANGE JC.** 3 6 OZ. 49<sup>c</sup>  
 CANS

HY KLAS — Frozen  
**LEMONADE** 3 6 OZ. 29<sup>c</sup>  
 CANS



CAMPBELL'S - New Pack  
 TOMATO  
**SOUP** 3 REGULAR CANS 29<sup>c</sup>

HI-WEST — Frozen  
**PEAS** 10 OZ. 10<sup>c</sup>  
 PKG.

IDAHO VALLEY — Frozen  
 HASH BROWN  
**POTATOES** BIG 2 LB. PKG. 29<sup>c</sup>



- VALU -  
**OLEO** 3 POUNDS 49<sup>c</sup>

NOTICE  
 GET 750 EXTRA FREE S & H GREEN STAMPS  
 By Redeeming The Coupons From RUBACK'S  
 First Of The Week Circular!

California - Large Size  
**CANTALOUPE**  
 EACH 15<sup>c</sup>



U.S.D.A. Choice  
**CLUB STEAK** Pound 89<sup>c</sup>

U.S.D.A. Choice — Lean Beef  
**SHORT RIBS** Pound 29<sup>c</sup>

Smoked  
**HAM HOCKS** Pound 29<sup>c</sup>

Hormel — Sliced  
**SMOKED BEEF** Pkg. 29<sup>c</sup>

Favorite — All Meat  
**FRANKS** Pound 49<sup>c</sup>  
 Pkg.

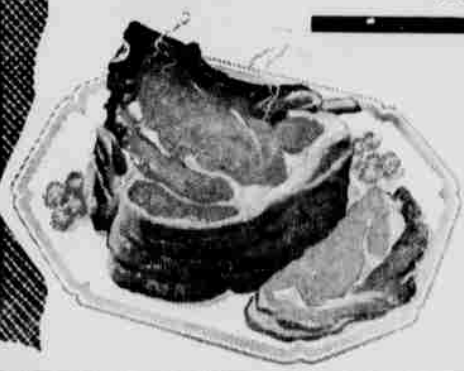
Hormel — Braunschweiger  
**CHUBS** 3 8 oz. 99<sup>c</sup>  
 Chubs

Fresh  
**GROUND BEEF** Pound 49<sup>c</sup>

Tender — Juicy  
**MINUTE STEAKS** Pound 99<sup>c</sup>

Armour's — Cooked Canned  
**PICNICS** 3 Lb. \$1.99  
 Can

Hormel — Cook Out  
**SAUSAGE** Pkg. 59<sup>c</sup>



HY KLAS — Thick Sliced  
**BACON** 2 LB. PKG. 98<sup>c</sup>

TASTEE — RING  
**BOLOGNA** 3 RINGS 79<sup>c</sup>

U.S.D.A. CHOICE — Rib  
**STEAK** POUND 79<sup>c</sup>

U.S.D.A. CHOICE — Standing  
**Rib Roast** Lge. End Pound 59<sup>c</sup>  
 Small End Lb. 69<sup>c</sup>



Ruback's Famous Farm Fresh  
**FRYERS**  
 WHOLE POUND 23<sup>c</sup>  
 Cut Up Lb. 25<sup>c</sup>



**RUBACK'S**  
 SUPER MARKET

Meat & Produce Prices Effective Through Saturday, Aug. 19th.  
 Grocery prices thru Thursday, Aug. 24th. Right reserved to limit quantities.