

SAVE \$ SAVE \$ SAVE \$ SAVE \$ SAVE \$ SAVE \$ SAVE \$ SAVE \$ SAVE \$

Open 'Til 9 p.m. Every Night !!

Ruback's Giant

JUNE JUBILEE



DEL MONTE **TUNA**
CAN **23c**

- VALU - BOTTLE
CATSUP 10c



Valu **DOG FOOD**
4 16 OZ. CANS **29c**

Fro Joy **ICE CREAM**
1/2 Gal. Pkg. **59c**

Blue Star Frozen **PIES**
Apple or Cherry
3 Big 24 Oz. Pies **\$1.00**



POWDERED - OR - **BROWN SUGAR**
2 Pounds **19c**

Valu Sliced or Halves
PEACHES
4 No. 2 1/2 Cans **\$1.00**

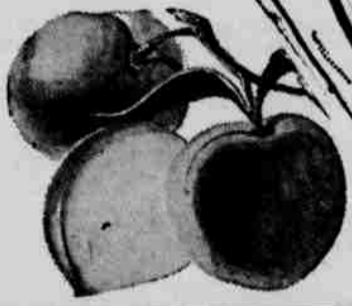
Wortz - Saltine
CRACKERS
Pound Box **19c**

Hy Klas - Golden - Whole Kernel or Cream Style
CORN 3 NO. 303 CANS **49c**
Marine Beauty - Chum
SALMON 16 OZ. CAN **39c**
Hy Klas - White
BREAD 16 OZ. LOAF **10c**

Hy Klas Peanut **BUTTER**
18 OZ. JAR **49c**

Contadina **Tomatoes**
2 NO. 2 1/2 CANS **45c**

California Elberta Freestone
PEACHES
2 POUNDS **29c**

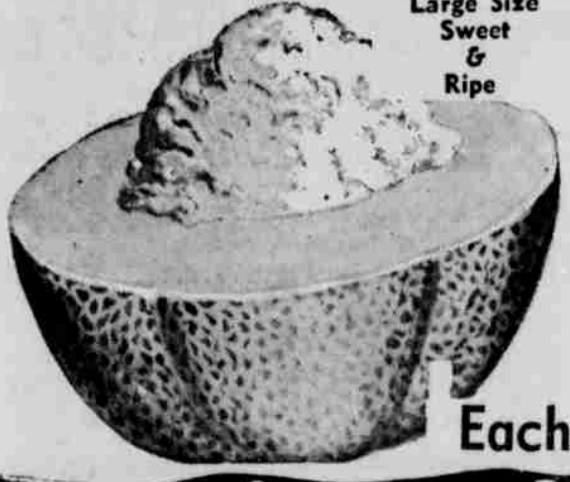


Cal Fame PINEAPPLE and GRAPEFRUIT
DRINK
4 46 Oz. Cans **\$1.00**

Picnic Hams
Mcrell's Pride
- Hickory Smoked -
READY TO EAT
- Pound - **29c**

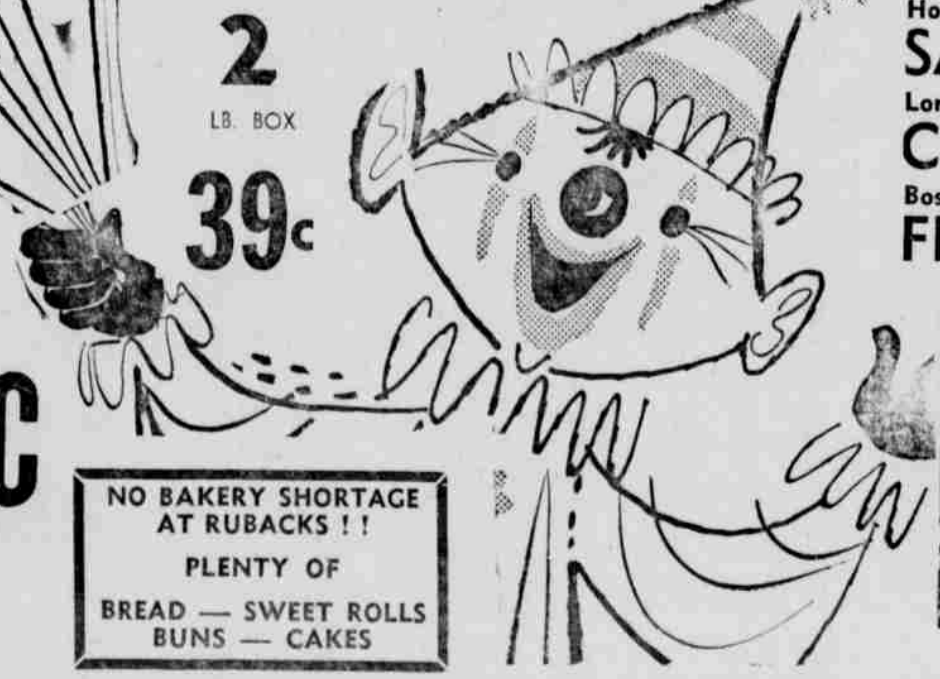


Cantaloupe



Large Size Sweet & Ripe
19c
Each

Hy Klas - Old Fashioned
COTTAGE CHEESE
2 LB. BOX **39c**



NO BAKERY SHORTAGE AT RUBACKS !!
PLENTY OF
BREAD - SWEET ROLLS
BUNS - CAKES

Hormel's - All Meat **FRANKS** Pkg. **45c**
Hormel's - Roll Pork **SAUSAGE** Lb. **35c**
Longhorn **CHEESE** Lb. **49c**
Boston Bonnie - Frozen **FISH STICKS** 8 Oz. Pkg. **29c**

Hy Klas - Thick Sliced
BACON
2 LB. PKG. **79c**

RUBACK'S SUPER MARKET

Meat and Fresh Produce prices effective thru Sat. June 6th. Grocery prices good thru Thurs., June 11th. Right to limit quantities reserved.

SAVE \$ SAVE \$ SAVE \$ SAVE \$ SAVE \$ SAVE \$ SAVE \$ SAVE \$ SAVE \$