

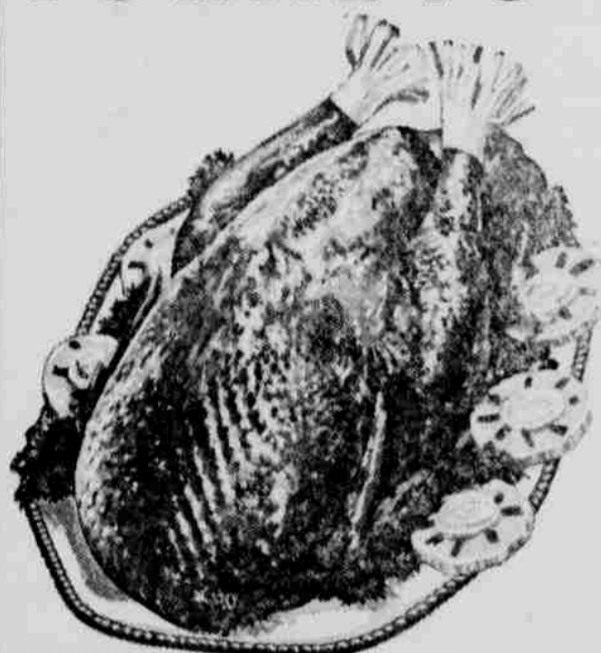
CLOSED FOR GOOD FRIDAY SERVICES
1 To 3 P. M. FRIDAY

GET A LOAD OF EASTER FOOD BARGAINS



Fancy U S D A Graded "A" DELUXE HEN

TURKEYS



6 TO 12 LB. AVE. POUND

39^c

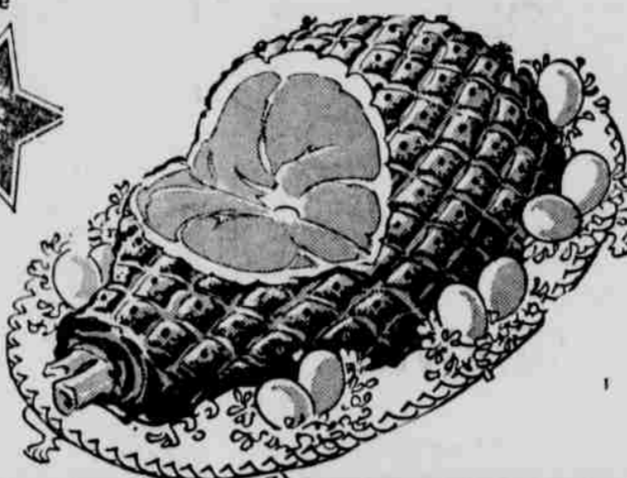
FRESH DRESSED FRYERS. HENS: CHOICE VEAL, LAMB, BEEF, PORK

We Will Feature



HAMS

Sample This Delicious Ham Fri. & Sat.



Cudahy's BAR-S HOLIDAY HAMS

Hormel's — Fully Cooked, Shank Portion **HAM** L.B. **39^c**

Easter Morning Treat — Arn's Homemade **LARGE LINK SAUSAGE** L.B. **59^c**

Shurfine — Fruit **COCKTAIL** NO. 2 1/2 CAN **41^c**

Royal Prince **YAMS** 2 NO. 303 CANS **45^c**

Taylor's — Vacuum Packed Sweet **POTATOES** 17 OZ. CAN **29^c**

Shurfine **SWEET PEAS** 2 NO. 303 CANS **37^c**

Shurfine Grapefruit **JUICE** 3 46 OZ. CANS **\$1**

Telephone — Spiced **APPLES** 1 LB. JAR **29^c**

Haarman — Sweet **PICKLES** 22 OZ. JAR **39^c**

Ma Brown — Pickled **BEETS** 1 LB. JAR **27^c**

Shurfine — Sweet, Fresh Cucumber **CHIPS** 16 OZ. JAR **29^c**

Shurfine — Stuffed **OLIVES** NO. 7 JAR **45^c**



Sno-Fresh — Frozen **BROCCOLI SPEARS** 2 8 OZ. PKGS. **29^c**

Sno-Fresh — Frozen French Cut **GREEN BEANS** 2 9 OZ. PKGS. **41^c**

Sno-Fresh — Frozen **BRUSSEL SPROUTS** 2 8 OZ. PKGS. **41^c**

Liquid Detergent **TREND** 22 OZ. Can **53^c**

Liquid Detergent **LUX** 22 OZ. Can **71^c**

Liquid Starch **GLOSSTEX** Quart Bottle **33^c**



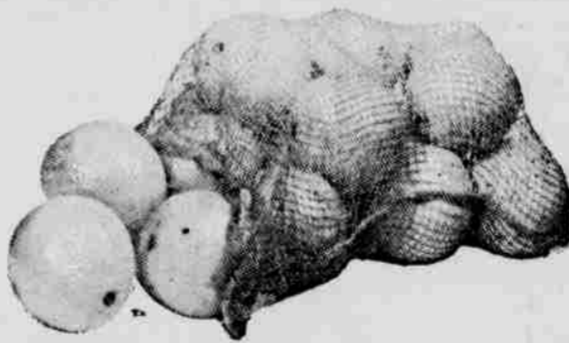
Sunkist — Navel, Medium Size **ORANGES** 4 Lbs. **39^c**

Easter LILYS EA. **\$1.98**

GREEN ONIONS Bunch **5^c**

RADISHES Bunch **5^c**

ALSO AVOCADOS — PARSLEY — TOMATOES CAULIFLOWER — GREEN PEPPERS — POTTED CHIVES



Sunshine Krispy **CRACKERS** 1 Lb. Box **29^c**

Supreme Salad **WAFERS** 1 Lb. Box **29^c**

EASTER TREATS

FREE ICE CREAM CONES ALL DAY SATURDAY!

I G A Royal Gold — Assorted Flavors **ICE CREAM** 1/2 Gal. Pkg. **59^c**

Hostess — Angel Food **CAKES** Reg. 45c Value **39^c**



Dream Whip **DESSERT TOPPING**

Naturipe Frozen **STRAW-BERRIES** 1 LB. 4 PKGS. **\$1**

PKG. **25^c**

Morton's Frozen **APPLE & CHERRY PIES** Big 24 Oz. Pie **39^c**

Del Monte — Crushed **PINEAPPLE** 2 9 OZ. CANS **29^c**

Ocean Spray — Cranberry **SAUCE** 2 NO. 300 CANS **45^c**

Shurfine, In Heavy Syrup, Halves **PEARS** 4 NO. 303 CANS **\$1**

Del Monte — Spiced **PEACHES** 1 LB. JAR **35^c**

FOLGERS

"The Instant Taste Is Gone" INSTANT COFFEE

6 OZ. JAR **89^c**



OPEN FRIDAY and SATURDAY UNTIL 9 P. M.

HELP YOUR COMMUNITY BY HELPING YOUR CHURCH — DEPOSIT YOUR SALES SLIPS & TAPES

SHOP **SOENNICHSEN'S** AND SAVE

"A Member of Associated Grocers, Inc"