

SAVE \$ SAVE \$ SAVE \$ SAVE \$ SAVE \$ SAVE \$ SAVE \$ SAVE \$ SAVE \$



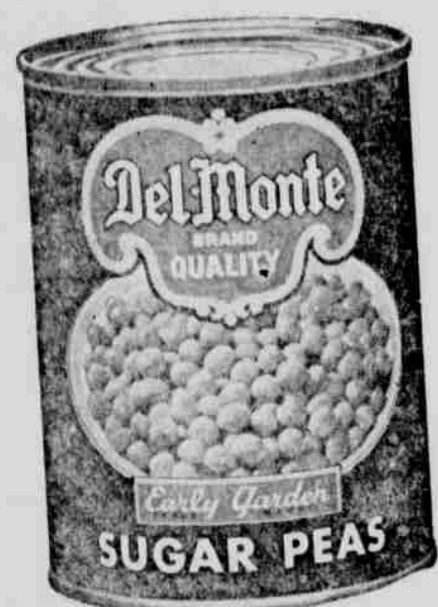
Valu — Tomato

CATSUP
12 Oz. Btl. **10^c**

Easter Feasters



SAVE BUY the basketful!

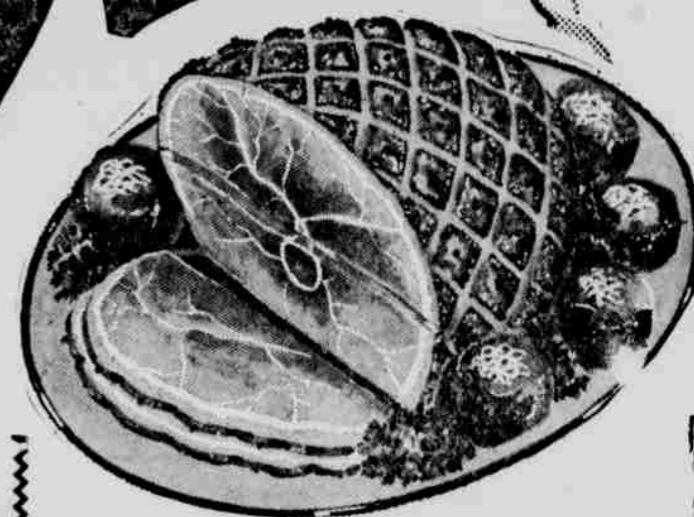


Sugar PEAS

2 DEL MONTE No. 303 Cans 29

Cudahy Puritan or Swift's Premium

HAM 45^c



Ready To Eat **HORMEL HAMS** 4 Lb. Can \$3.89
Ready To Eat **HORMEL HAMS** 5 Lb. Can \$4.89
Hormel Pork **SAUSAGE** Pound Roll 35^c

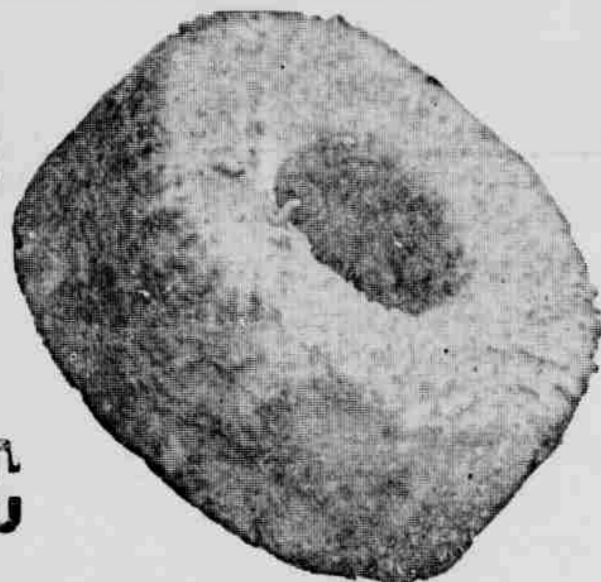
Ready To Eat Whole **POUND**

Shank Half Center Slices — 89c Lb. 39c Lb. — Butt Half 49c Lb.

ANGEL FOOD CAKES

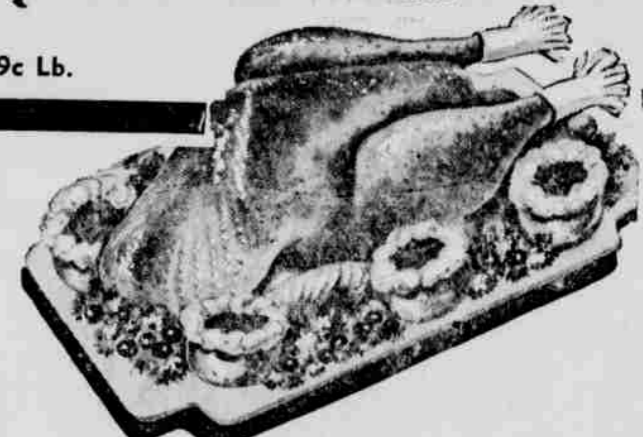
Peter Pan Big Round Cakes

25^c



EACH

Swift's Royal Rock — 8-14 Lb. **TURKEYS 35^c**



Cudahy's — Ready To Eat

BAR - S - HAMS 89^c

- Ocean Spray **CRANBERRY SC.** 2 No. 300 Cans 39^c
- Bakers — Semi Sweet **CHOCOLATE CHIPS** 6 Oz. Pkg. 19^c
- Griffins — Shredded **COCONUT** Pound Pkg. 39^c
- Libby's — Cut **GREEN BEANS** 5 No. 303 Cans \$1.00
- Hy Klas — In Syrup **SWEET POTATOES** No. 2 1/2 Can 29^c
- Hy Klas — Old Fashion Sweet **PICKLE CHIPS** 4 16 Oz. Jars \$1.00
- Valu — Strawberry **PRESERVES** 20 Oz. Jar 39^c
- Del Monte — Sliced **PINEAPPLE** 3 No. 2 Cans 99^c

Stilwell — Frozen Sliced **Strawberries**

4 16 OZ. PKGS. \$1.00

Kraft Margarine

PARKAY 4 LBS. \$1.00

Hy Klas — White

BREAD 10^c

LOAF

Meat & Produce prices good thru Saturday, March 28th. Grocery prices good thru Thurs., April 2 to limit quantities reserved.

Hy Klas Brown & Serve **ROLLS** 2 PKGS. OF 12 **29^c**

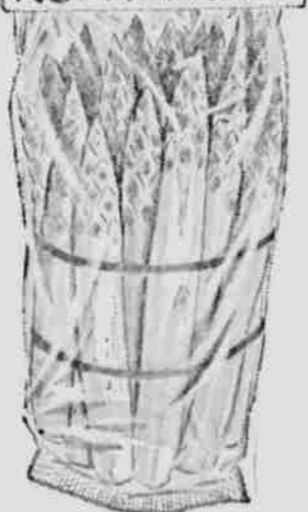
Pet Ritx — Apple or Cherry Frozen

PIES 39^c

Del Monte

Tomato Jc. 4 46 OZ. CANS \$1.00

ASPARAGUS

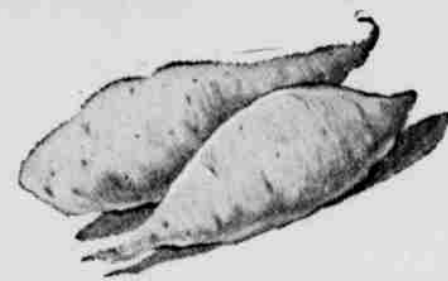


Fresh Green

Asparagus

BUNDLE

15^c



Porta Rican — Golden

YAMS 3 lbs. 25^c

SAVE \$ SAVE \$ SAVE \$ SAVE \$ SAVE \$ SAVE \$ SAVE \$ SAVE \$ SAVE \$