

SAVE \$ SAVE \$ SAVE \$ SAVE \$ SAVE \$ SAVE \$ SAVE \$ SAVE \$ SAVE \$



**DEL MONTE TUNA**  
— CAN —

**23<sup>c</sup>**

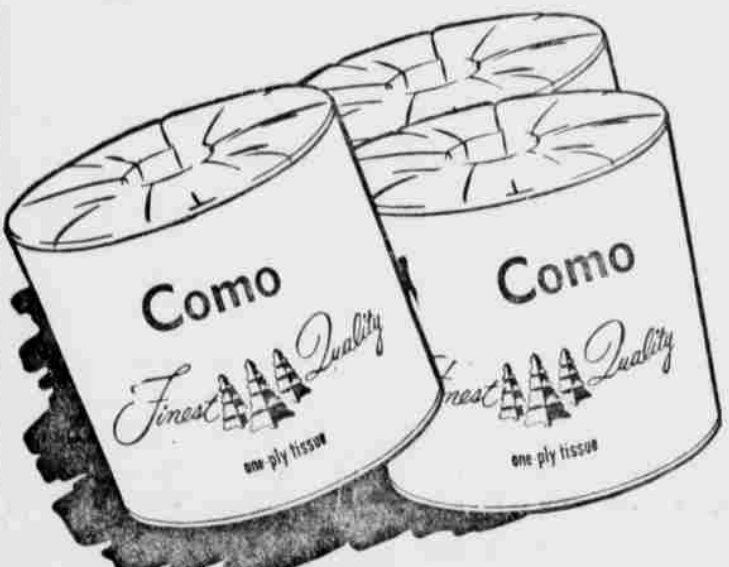
Let Us Pamper You With

**SERVICE**

**ORANGE JUICE**

HY KLAS - FROZEN  
Or Whole Sun

**6** 6 OZ. CANS **\$1<sup>00</sup>**  
Lowest Price In Months



COMO - QUALITY TOILET  
**TISSUE**

**4** ROLLS **15<sup>c</sup>**

Ellis  
**CHILI**  
With Beans  
4 NO. 300 CANS **\$1**

VALU  
**Peaches**  
Sliced or Halves  
Big No. 2 1/2 Can **19<sup>c</sup>**

- Select — No. 300 Can **PORK & BEANS**
- Select — In Cheese & Tomato Sauce — No. 300 Can **SPAGHETTI**
- Select — No. 300 Can — Red **KIDNEY BEANS**
- Select — No. 300 Can — In Chili Gravy **CHILI BEANS**
- Maine In Oil — Flat Can **SARDINES**

Your Choice  
**9<sup>c</sup>** Mix 'Em Up

Tops — Saltine	Pound Box	19 <sup>c</sup>
Boston Bonnie — Frozen	8 Oz. Pkgs.	29 <sup>c</sup>
Gulf Stream — Breaded	10 Oz. Pkg.	49 <sup>c</sup>
Fro Joy — Ass't. Flavors	1/2 Gal. Pkg.	59 <sup>c</sup>
Penick Waffle & Pancake	5 Lb. Can	59 <sup>c</sup>

Hy Klas - Fresh White  
**BREAD**  
LOAF **10<sup>c</sup>**

Cal-Ida Frozen  
**French Fries**  
PKG. **10<sup>c</sup>**

Butternut - Instant  
**COFFEE**  
6 OZ. JAR **98<sup>c</sup>**

Hy Klas — Creamery  
**BUTTER**  
LB. **59<sup>c</sup>**

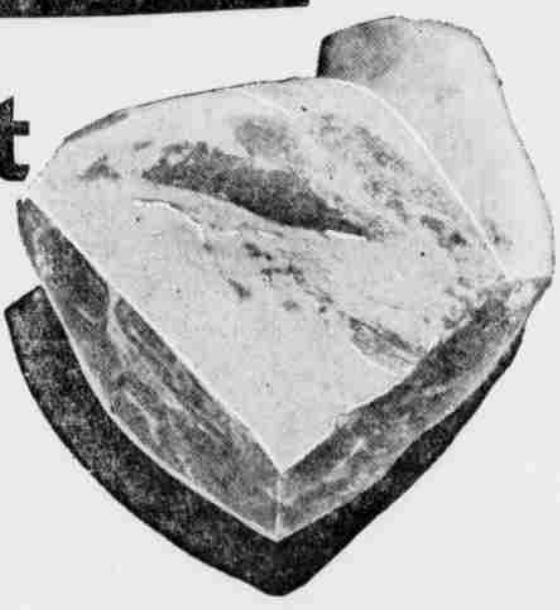
Marsh Seedless - White or Red  
**GRAPEFRUIT**  
10 For Only  
**29<sup>c</sup>**



**CHOCOLATE CHIPS**  
BAKERS  
6 OZ. PKG. **19<sup>c</sup>**  
Save 10c

Fresh Picnic — Hocks Removed  
**Pork Roast**  
— POUND —

**25<sup>c</sup>**



Hy Klas  
**FLOUR**  
10 Lb. Bag **59<sup>c</sup>**

Swift Brookfield Link	Lb.	49 <sup>c</sup>
Swift's Ring	3 Rings	99 <sup>c</sup>
Favorite	Pound	55 <sup>c</sup>

**RUBACK'S**  
**SUPER MARKET**

Meat & Fresh Fruits and Vegetable prices good thru Sat., Jan. 21th.  
Grocery prices good thru Thurs. Jan. 29th. Right to limit reserved.

SAVE \$ SAVE \$ SAVE \$ SAVE \$ SAVE \$ SAVE \$ SAVE \$ SAVE \$ SAVE \$