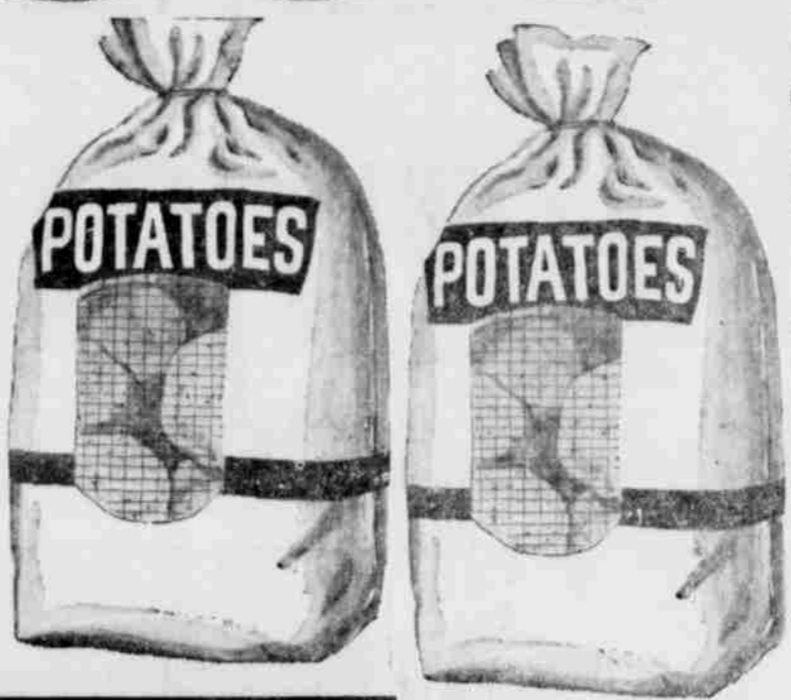


SAVE \$ SAVE \$ SAVE \$ SAVE \$ SAVE \$ SAVE \$ SAVE \$ SAVE \$

**POTATOES**  
Top Quality  
"A" Size  
Reds  
**89<sup>c</sup>**  
**50 POUND BAG**



Hy Klas — Luncheon  
**MEAT**  
12 Oz.  
Can **39<sup>c</sup>**

Save All — Grated  
**TUNA**  
2 REG. CANS **33<sup>c</sup>**



**PET MILK**  
Best For Every Use  
**7 TALL CANS \$1<sup>00</sup>**

Orange Drink  
**HI-C**  
46 Oz.  
Can **29<sup>c</sup>**

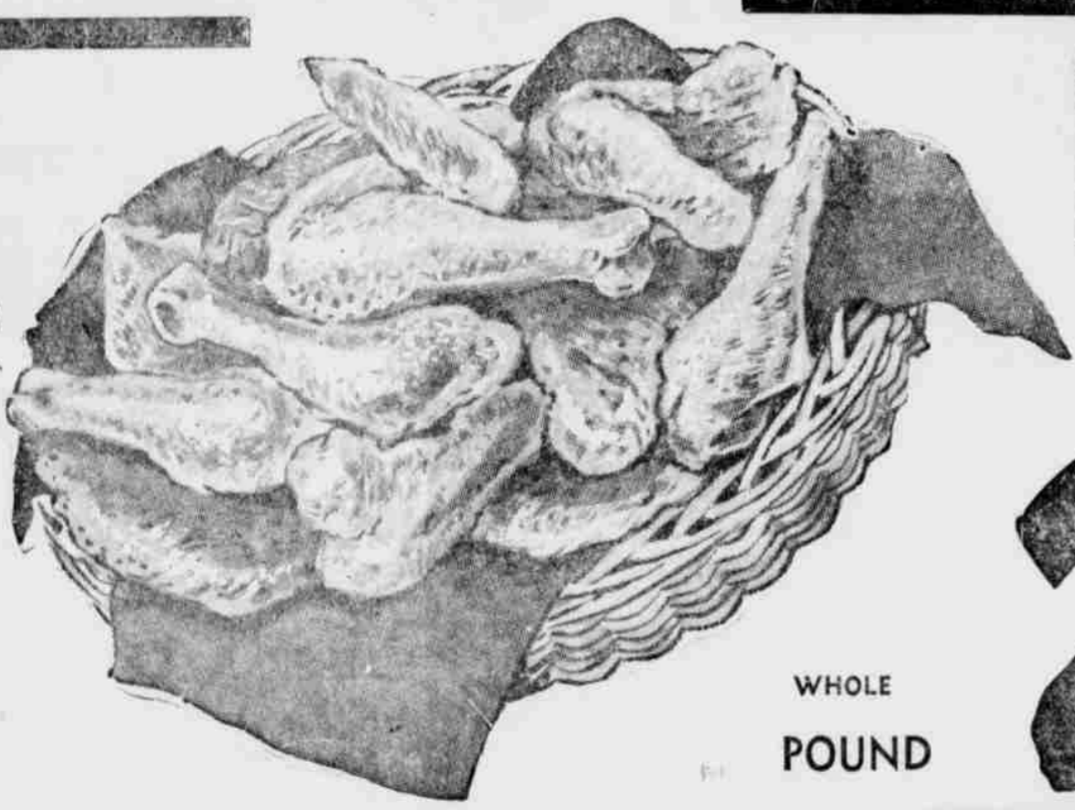
**FRUIT BEANS** 2 NO. 303 CANS **39<sup>c</sup>**  
**BEANS** 4 NO. 303 CANS **89<sup>c</sup>**  
**TTI** 2 15 1/4 Oz. CANS **29<sup>c</sup>**  
**GUS** 3 NO. 300 CANS **69<sup>c</sup>**  
**STEW** 4 NO. 1 CANS **\$1**  
2 16 Oz. CANS **45<sup>c</sup>**  
**FRUIT** NO. 2 1/2 CAN **29<sup>c</sup>**



**GELATINE**  
ROYAL  
Ass't Flavors  
PKG. **5<sup>c</sup>**

Native Cherry  
**PIE MIX**  
3 No. 2 Cans **\$1<sup>00</sup>**

**RUP**  
White 5 Lb. Can **59<sup>c</sup>**



**FRYERS**  
Ruback's Famous  
Farm Fresh  
**29<sup>c</sup>**  
Cut Up Lb. **33<sup>c</sup>**

Golden Shore Breaded  
**SHRIMP**  
10 Oz. Pkg. **49<sup>c</sup>**

**ROLLS**  
PKGS. OF 12 **35<sup>c</sup>**

No. 1 Skinless  
**WIENERS**  
2 Lb. Pkg. **89<sup>c</sup>**

Del Monte Red  
**SALMON**  
Tall Can **79<sup>c</sup>**

Valu  
**DOG FOOD**  
4 16 Oz. Cans **29<sup>c</sup>**

Morrell Pride — Pork  
**Sausage** POUND ROLL **35<sup>c</sup>**  
Swift's — Fresh Liver  
**Sausage** POUND **39<sup>c</sup>**  
Ends & Pieces  
**BACON**  
5 Lb. Box **99<sup>c</sup>**

**RUBACK'S SUPER MARKET**

Grocery prices good thru Thursday, Jan. 22nd. Right to limit quantities reserved. Meat and Fresh Fruits & Vegetables Saturday, Jan. 17th.

**Evidence Needed In Processing Claim for SS**

Many persons who intend to apply for old-age insurance benefits have asked how they can help to speed up the handling of their claims according to Anthony J. Piccolo, field representative of the Lincoln social security office.

Piccolo said that certain evidence is needed when a person applies for social security benefits. Considerable processing time can be saved if the following items are furnished:

1. The social security card.
2. The 1958 Form W-2, Employer's Statement of Earnings, or if self-employed, an extra copy of the 1958 Federal Income Tax Return. Also copies of any schedules attached and the cancelled check or other evidence that the return was filed.
3. Documentary proof of age. If no birth certificate is available, other documents (the older the better) may be used. A baptismal or confirmation certificate is good. Other possibilities are life insurance policies, family Bible records, and school, lodge, military or naturalization records.

Piccolo will be at the courthouse, Room 304, in Plattsmouth, at 9 a.m., on Jan. 14, Feb. 11, and March 11.

**Red Cross To Aid Philippine National POWs**

The American Red Cross has agreed to offer its services to Philippine nationals who were prisoners of war of Japan. Compensation is available to those eligible under Article 16 of the Treaty of Peace with Japan. They may register on forms which are available from local chapters, field directors serving with the armed forces, or American Red Cross, Washington 6, D. C.

The registration in the United States is being carried out in accordance with the request from the International Committee of the Red Cross, Geneva, Switzerland, which has responsibility for distributing compensation under Article 16 of the Peace Treaty with Japan. A person who was a Philippine national serving with U. S. armed forces at time of capture is eligible to register for compensation. The next of kin may apply if the former prisoner is dead. The source of this money is assets of the Japanese government and Japanese nationals on deposit in neutral countries which have been transferred to the International Committee by Japan.

The Red Cross said all registrations must be in its hands by March 15, 1959. There is no need to register again for registration already has been made in the Philippines or the U. S. The American Red Cross is acting for the Philippine National Red Cross.

Applicant should give name, rank, service or serial number, date and place taken prisoner, and place detained as prisoner of war. If possible, proof of identity should be presented.

All applicants must give a permanent address and the claimant's signature should appear on the form.

Completion of action on the registration will take several months.

University of Nebraska agricultural economists say we're recovering from the recession of 1957-58 but at a gradual rather than "boomy" pace. This will continue unless the international situation should suddenly worsen. Excess plant capacity in major industries makes it possible to meet demand increases by hiring more production workers and lengthening the work week. Mild restrictions in the form of higher rediscount rates for commercial banks have been reimposed.

Agricultural adjustment problems will be with us for some time to come, agriculture economists at the University of Nebraska predict. The major types of adjustments required are: balancing farm production with demand; and assuring farm people of access to and training for non-farm jobs which will offer some of them better opportunities than farming. Federal, state and local programs will continue to be needed to make these adjustments with a minimum of economic and social disturbance.

SAVE \$ SAVE \$ SAVE \$ SAVE \$ SAVE \$ SAVE \$ SAVE \$ SAVE \$