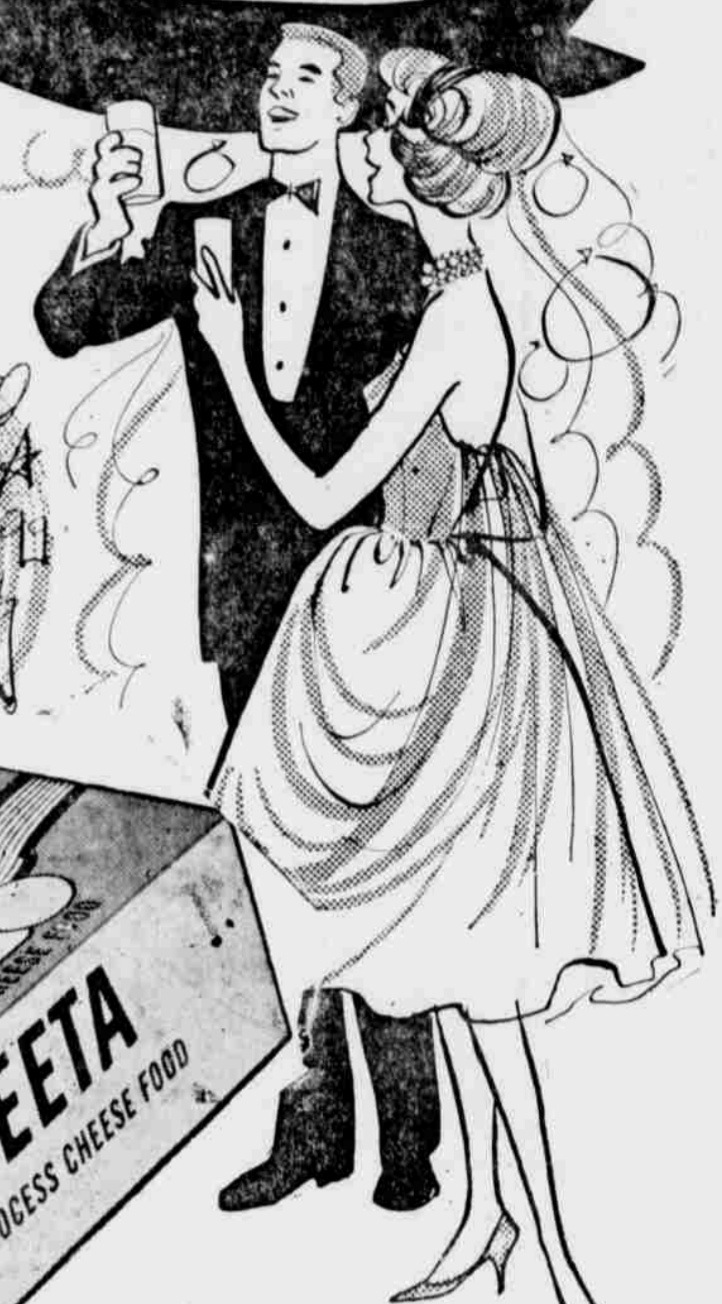


SAVE \$ SAVE \$ SAVE \$ SAVE \$ SAVE \$ SAVE \$ SAVE \$ SAVE \$ SAVE \$

BELL-RINGING BUYS

for **HAPPY NEW YEAR**
FUN and FEASTING!



Del Monte
TUNA
CAN **25^C**

York Pure
ASPIRIN
BTL. OF 100 **9^C**
Fine For The Morning After

KRAFT
VELVEETA
2 LB. LOAF **69^C**



Campbell's Vegetable
SOUP 2 NO. 1 CANS **25c**

Hy Klas Fruit
COCKTAIL NO. 333 CAN **19c**

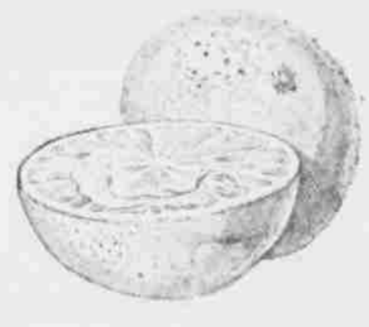
Kounty Kist
CORN 2 1/2 OZ. CANS **25c**

Hy Klas — Fancy
TOMATO JUICE 46 OZ. CAN **19^C**

Your PARTY PANTRY

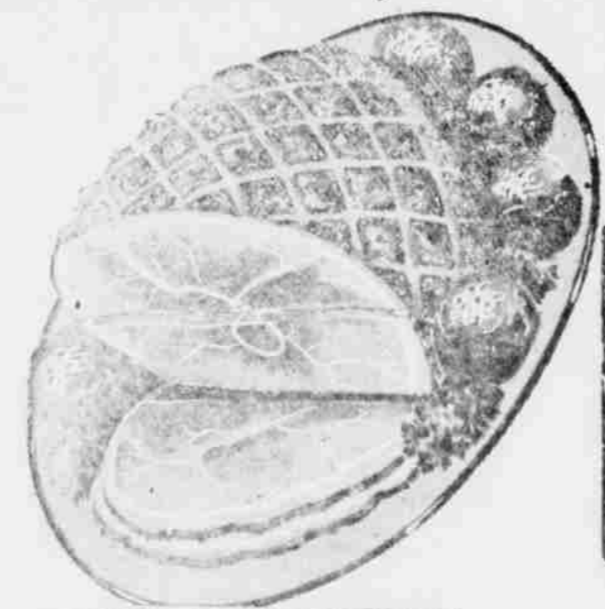
- Hy Klas — Stuffed Spanish Olives Ice Box Jar **49^C**
- Hy Klas — Sweet Pickles 2 16 Oz. Jars **45^C**
- Cal-Ida — Frozen French Fries Pkg **10^C**
- Hy Klas — White or Yellow Pop Corn 2 Lb. Bag **19^C**
- Hy Klas — Shoestring Potatoes No. 212 Can **19^C**
- Otoe Finest Spaghetti No. 300 Can **10^C**
- O & C French Fried Onions No. 300 Can **29^C**
- Hy Klas Sweet Relish 4 12 Oz. Jars **\$1⁰⁰**
- Hy Klas — Peanut Butter 18 Oz. Jar **49^C**
- Chef Boy Ardee Pizza Mix 2 Pkgs. **89^C**
- Morton House Chili No. 300 Can **29^C**
- Ellis Tamales No. 300 Can **25^C**
- Heinz Ketchup 14 Oz. Btl. **19^C**
- Philadelphia Cream Cheese Pkg. **15^C**
- Hy Klas Detergent Giant Pkg. **59^C**

Florida — Marsh Seedless
Grapefruit
5 Lb. Bag **29^C**



HORMEL READY TO EAT HAM

POUND — WHOLE
55^C



Shank Half Lb. 49c
Butt Half Lb. 59c
Center Slices Lb. 89c

Del Monte Chunk or Crushed
PINEAPPLE
5 NO. 211 CANS **\$1⁰⁰**

Wisc. Longhorn
CHEESE
LB. **49^C**

Pickle Pimento - Mac Cheese - Liver Loaf
Luncheon Loaf
LB. **49^C**

Tops — Soda
Crackers
LB. BOX **15^C**

Kitty Clover Potato
CHIPS
BIG 69^C BAG **59^C**

RUBACK'S WILL CLOSE AT 6:30 P.M. NEW YEAR'S EVE.

RUBACK'S SUPER MARKET

Prices good thru Wed. Dec. 31st. Right to limit quantities reserved.

SAVE \$ SAVE \$ SAVE \$ SAVE \$ SAVE \$ SAVE \$ SAVE \$ SAVE \$ SAVE \$