

## All '58 Corn In County Supportable

All corn harvested in Cass County this fall will be eligible for price support provided it is of acceptable quality, Ivan G. Althouse of the County Agricultural Stabilization and Conservation Committee announced today.

For corn produced in compliance with the farm acreage allotment, the support rate for farm-stored corn in the county will be \$1.32. For corn not produced in compliance with allotments, the rate for farm-stored corn will be \$1.02.

## FPC Hasn't Acted on Gas Rate Case

Central Electric and Gas Company has informed the Mayor and City Council by letter about the status of matters in connection with gas rates, as follows:

The Federal Power Commission on June 25, 1958 determined our motion to dismiss Northern's Docket G-12153 (Rate Case No. 6) as premature.

The Federal Power Commission has held no hearings and, as far as is known, taken no action on Northern's Docket G-12153 (Rate Case No. 6).

The U. S. Supreme Court has rendered no decision or finding in connection with the Memphis Case.

Your rates now in effect as a result of Northern's Docket G-12153 (Rate Case No. 6) are subject to refund pending final disposition of Northern's Rate Case No. 6 by the Federal Power Commission.

As you know, Northern, on May 26, 1958, filed another application (Rate Case No. 7) for an additional increase in the wholesale price of gas amounting to \$8,137.151 per year-\$827,895 of which applies to our company.

The Federal Power Commission has effected the maximum five month suspension of Northern's May 26, 1958 application for rate increase, Docket G-15335 (Rate Case No. 7).

Inasmuch as the Federal Power Commission has not been able to act on Docket G-15335 (Northern's Rate Case No. 7), the rate increase to Northern's utility customers proposed in Rate Case No. 7 will become effective under refunding bond on Nov. 27, 1958, the company said.

"We propose to handle the increase from Northern's Rate Case No. 7 in the same manner as was used in prior increases wherein your retail rates were increased just enough to cover our increased cost of gas with a refund agreement. In the past, we have made several refunds and rate adjustments as a result of Northern obtaining less rates than were placed in effect under bond," the company said.

The proposed gas rate ordinance sent to the city contains a schedule of increased rates.

"Our position of steadfastly opposing Northern's rate cases is well known to you, and you may be certain that we will continue to act in the interest by preserving the quality and economy of natural gas service, the company said.

The fire department was called out Saturday afternoon by an alarm from the Wysel garage where a truck was reported on fire.

The truck which was wrecked, was outside the building and the fire was occasioned by gas in the line catching fire. The truck was owned by Miller Kidder from Iowa.

The loss is estimated at \$15 by the fire department.

A Classified Ad in The Journal cost as little as 50 cents.

THE WEATHER  
Oct. 9, 10, 11, 12, 1958  
Date High Low Pre.  
Thursday . . . . . 76 56 .00  
Friday . . . . . 65 38 .00  
Saturday . . . . . 67 33 .00  
Sunday . . . . . 78 51 .00  
Forecast: High near 80; low in upper 50's. Cloudy tonight. Sun sets tonight at 5:47; Sun rises Tuesday at 6:34 a.m.

The decision to offer supports on non-compliance corn — as well as on corn produced within allotments — was recently announced by the Department of Agriculture for the third successive year. The Department called it an "unusual and emergency" program to "help stabilize current feed grain and future livestock markets."

The price-support program for the 1958 corn crop will be carried out as in the past through Commodity Credit Corporation Loans and Purchase Agreements. Althouse said these will be available from harvest-time through May 31, 1959 and will mature on July 31, 1959.

To be eligible for price support, ear or shelled corn must grade No. 3 or better except that corn grading No. 4 because of test weight only will also be eligible. The corn must meet certain moisture requirements and must be in adequate storage, either on the farm or in a warehouse or elevator.

## Soennichsen's Marks 70th Anniversary

Three score years and 10 is the number at Soennichsen's who are celebrating the anniversary of the founding of the firm 70 years ago and today is noted as being the leading department store in Cass County.

Starting last Friday and continuing through this week, the firm is offering special buys in all departments.

H. M. Soennichsen, founder of the firm still takes an active interest in its operation.

Two of the second generation of Soennichsen's supervise the store now, Mrs. Matilda Pein and W. C. Soennichsen.

The store is departmentalized under three heads, Chris Bullin, Don Lorenson and "Sam" Arn.

Over the years this firm has been known for its community spirit, and progressive policies.

No one firm has done more to further the growth of Plattsmouth than has Soennichsen's.

By many, it is felt that "What Brandies is to Omaha, Soennichsen's is to Plattsmouth."

Service Stations Have Plan To Aid Rec Fund

"We have 100 per cent cooperation" was the way Al Huebner plans for the local petroleum retailers group of which he is president.

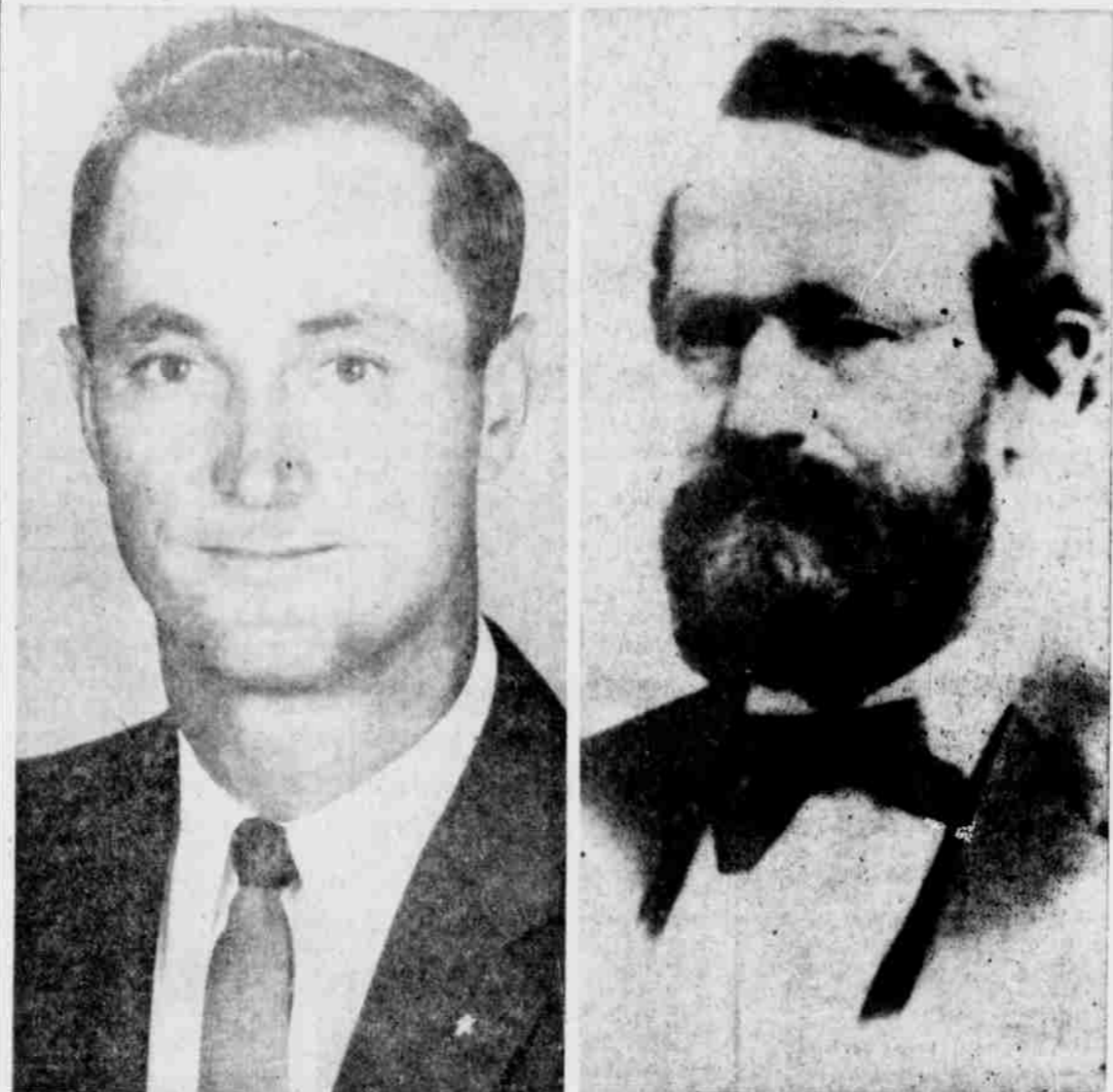
As a part of their Oil Progress Week promotion, all of the local service stations will give one cent per gallon toward the Playground fund on all gasoline sold on Saturday Oct. 18th.

That means that if you fill up with gas on that day, you'll be helping the summer playground fund at not one cent to you.

Plans for this promotion have been under the direction of Mr. Huebner and Arthur Ofe.

Stations co-operating are Huebner's 66 Service, Ofe Oil Co., Jay's Texaco, Larry's Texaco, Tom's Standard Service, Simpson Bros. Standard Service, Kent Oil Co., Clouidt Service, Wall's Conoco Service, Linder Oil Co., and C. E. Shellenbarger Sinclair.

Asked for an estimate of what the day should net for the playground fund, Mr. Huebner placed it at around \$80.00 for the day.



Shown above are the first and present Masters of Plattsmouth Lodge No. 6, Masons. The photo of Edmund A. Donelan, physician and druggist, was taken from a portrait in the local Lodge. He was Master from Feb. 20, 1858, to July 5, 1858. Mayor of Plattsmouth, he was also president of the Nebraska Territorial Assembly. He served as Senior Grand Pursuivant of the State of Nebraska Masons, June 2, 1858, to June 14, 1859. Raymond Lancaster, present worshipful master, prominent farmer of the Murray community, has been an active figure in Masonry for the past few years, serving in the various offices until called to head the lodge. His family has been active in the Eastern Star and Jobs Daughters.

## McLean Aide to U. S. VFW Cmdr.

KANSAS CITY, Mo.—A. C. McLean, Plattsmouth, has been appointed National Aide-de-Camp to John W. Mahan, Helena, Mont. Commander-in-Chief of the Veterans of Foreign Wars. The announcement was made at VFW National Headquarters.

In making the announcement, Commander Mahan said "I deem it a great honor to have Mr. McLean serve on my personal staff. He has long been a tireless worker for the Veterans of Foreign Wars and I am confident that he will carry out his assignment as National Aide-de-Camp with the same enthusiasm. Our organization is fortunate to have men of his caliber standing ready to serve," Mahan said.

Senator Tom Dooley Dies of Heart Attack

Senator Tom Dooley, 78, representative of Cass and Sarpy counties in the unicameral legislature for four terms, 1943, 1945, 1953 and 1957 and three special sessions, died Sunday at Lincoln. Mr. Dooley entered the hospital recently for a check-up.

Senator Dooley was a candidate for re-election at the forthcoming election. He was re-nominated at the primary election together with Harrison L. Gayer of Papillion, former Cass county man. The third candidate at the primary was Edwin F. McHugh of Murdock, who apparently will replace Mr. Dooley on the ballot.

Thomas Dooley was born at Salem, New York, October 11, 1880, son of Thomas Dooley and Ellen M. Whaley Dooley. He spent the greater part of his life in the west, being educated in the schools at Fremont high school and Fremont Normal. He was married on September 20, 1910 at Papillion to Gen. A. L. Critchfield, who with a son and daughter survive his passing.

He came to Sarpy county on April 6, 1896, engaging in farming until 1904. He later was operator of the Waterloo Creamery at Papillion 1905-1906. Mr. Dooley was always an active figure in the life of Sarpy county, serving as deputy county clerk and later as county clerk and city clerk of Papillion.

Mr. Dooley was an active figure in democratic party circles of Sarpy county during his residence there.

He was a member of the Roman Catholic church.

Lyle Forrest and Dick Tincher accompanied two friends from Bellevue to Valentine for a long weekend of duck and goose hunting.

## Oil Progress Week, This Week, Reminds of Advancements

This is oil progress week . . . a week set aside by the nation's oil industry to call attention to the advances made by this fast growing industry over the years.

To emphasize the progress of oil and its effect upon the lives of each of us, the old farm boy, from the vantage point of over half a century, looked over his shoulder.

If you're in the age group of the old farm boy you will remember with him the oil history of the early 1900s. If you are under 30, this will be your history assignment for today.

The petroleum industry was in its infancy at the turn of the century. Oils, greases, kerosene, vaseline, and paraffine were the major products, with kerosene, (oil for lamps of China) the big seller.

Gasoline was strictly a by-product which had a limited market. There were only a few internal combustion engines and a small amount was used for cooking. It was generally sold at hardware and grocery stores . . . from a barrel. Axel grease and gear grease were in demand plus a very limited amount of lubricating oil.

With the coming of the auto-

mobile, the need for petroleum products became greater. Buildings that housed livery stables became combination livery stables and garages and then garages. A hand operated gasoline dispensing pump was set up just outside the door.

Next came the "filling station" a place to buy gasoline and were much in demand in early lubricants and a dispenser of free air and water, both of which auto days. There was also the bulk station which wholesaled the products to the retailers.

This set the pattern for the modern "Service Station" with the distributor, serving not only the retailer but the farmer and householder in this area with gasoline, lubricants and fuel of various types, both for heating and locomotion.

Today's gasoline and fuels are vastly improved over the earlier products.

Scientific advancements follow each other from year to year as the oil industry vies with itself to produce a better product.

Yes, this is Oil Progress Week. It is well that we pause, consider and pay tribute to the industry that makes life so much better, oil.

## Masons Here Have 100th Anniversary

### All Who Share Corn Crop May Vote In Referendum

Any resident of Cass County who produced corn in 1958 or was entitled to share in the 1958 corn crop will be eligible to vote in the Corn Referendum Nov. 25, Ivan G. Althouse of the County Agricultural Stabilization and Conservation Office said today.

An owner-operator, cash tenant, standing rent or fixed-rent

tenant a share tenant or share-cropper or the landlord of a share tenant will be eligible to vote. The landlord of a standing rent, cash rent, or fixed-rent tenant will not be eligible.

In addition, Althouse said, there are three other groups of eligible voters:

1. Any operator or landlord of a farm for which a 1958 corn allotment was established even though corn was not planted;

2. Any person who planted corn in 1958 but did not harvest it; and

3. Anyone who placed corn allotment land in the Soil Bank in 1958.

The purpose of the November Referendum will be to determine whether the present corn program should be changed for 1959 and later years to a new program in which there would be no acreage allotments on corn and price supports would be determined on a different basis.

Visitors Day Set at Allied

Nitrogen Division of Allied Chemical Corp. announced today that its Omaha plant, on U. S. 75 near LaPlatte, has designated Friday of each week as Visitors Day.

V. A. Peringer, plant manager, said tours of the plant will be available to the public at 1:30 on Fridays, starting Oct. 17. Each tour will be limited to about 15 persons. To aid in planning tours, reservations are necessary. Reservations may be made by calling or writing the plant's Industrial Relations Section.

In explaining the expanded tour program, Peringer said that the move was in response to numerous requests from the public. He noted that only organized groups had toured the plant previously, and that the public's interest indicated an increased awareness of the important role of nitrogen products in agriculture.

Memoriam Mass For Pius XII Here Tuesday

On Tuesday, Oct. 14, at 6:30 p.m. at St. John's Church here, a solemn requiem high mass will be celebrated in memoriam for the late Pope Pius XII.

The Rt. Rev. Msgr. Joseph Prudzik V. F. will be celebrant. Fr. Walter Banach will be deacon and Fr. Victor Stachowiak will be subdeacon.

The last absolution at the catafalque will be sung by Msgr. Prudzik. Music for the requiem will be provided by the St. John's choir under direction of Sr. Mary Lewis.

The public is invited to take part in the solemn tribute to the late pontiff.

Council Meeting

The City Council will meet at 7:30 tonight at City Hall. It is the regular second - Monday meeting.

Journal Want A's Pay

## Elm Grove Named Elmwood, History Says

By Mary McCaig Linhardt  
Elmwood is centrally located in Stove Creek Precinct and is situated on the corners of four sections. The Northwest and Southeast corners of town were railroad land.

The southwest corner was part of a school section and the Northeast corner was part of an eighty-acre tract homesteaded by Jesse Thompson.

The other eighty of this quarter was homesteaded by Sam May. The unique name of Stove Creek came, as the story goes, from a stove being found in the creek. It was thought this stove was lost from the wagon of an early day emigrant while fording the stream.

Even before the town was thought of, the first post office was in the log cabin home of the McCaigs, located one mile east and 1/2 miles north.

David McCaig was the first postmaster, receiving this commission signed by Alexander W. Randall on the 21st day of April, 1858. The post office was moved later a few miles south to the Walker store which was built in 1872 on Stove Creek near the ford 1/2 mile east of where Elmwood now stands.

Since the Walker store was in the midst of an Elm grove, the McCaigs suggested that the place be called Elmwood.

Charles Walker a son-in-law of Sam May succeeded David McCaig as postmaster and he opened a store and post office on the May homestead.

In 1872 we have the beginning of Elmwood on its present site. It consisted then of but one store. The post office was then moved to this store. Ell Lane was the first merchant in Elmwood and his store stood where the Elms Cafe is now located. Before long Silas Greenplate became a partner of Mr. Lane and it became Lane and Greenplate. Later C. D. Clapp became a partner of Mr. Greenplate.

In 1874 Elmwood was a growing village but it still had neither a Doctor or Blacksmith. Mr. Clapp heard of Mr. Woodruff of Nebraska City so he induced him to start a blacksmith shop here. Mr. Clapp also heard of Dr. Hobbs a young Doctor in Plattsmouth, he wrote to him and the young man rode out on horseback in 1875.

Dr. Hobbs built a home across the street south and a little east of the first store. Dr. Kenaston was the first Doctor in this locality but he never lived in town. His home and office was 1 mile east, 1/2 mile south on the east side of the road.

John Brendon was the first blacksmith in Elmwood. Jess Thompson continued his shop

under the hill east of Willard Clapp house on the north side of the road east of the concrete bridge but in a short time the Thompson's left the hardships of pioneer days and returned to the old home in Ohio. He sold out his business to Wm. Shick.

The first home built was behind the telephone office.

Richard Ray gave the first plot for the Elmwood Cemetery. Triplets born to Mr. and Mrs. Ray were the first to be buried there in 1869. A few years before her death, Mrs. A. W. Neihart (the former Clara Halbeck, daughter of pioneer settlers) solicited money and had a nice marker put up at the previously unmarked grave of the babies.

Buy now Elmwood was a booming village and in 1886 the Missouri Pacific Railroad came through Elmwood. It was through the untiring efforts of Dr. N. R. Hobbs, C. D. Clapp, John Clements, Cyrus Alton, and John Hart that the railroad management were induced to build their railroad through Elmwood instead of north of town as it had been surveyed.

On July 16, 1886 it was surveyed by A. E. Sprague and the plot was filed for record. Among the men instrumental in this act were: C. D. Clapp, Cyrus Alton, Wm. Shick, N. R. Hobbs, J. H. Hart, Edgar Stopher, David

McCaig, A. Shuff, A. S. May, G. W. Nyton, H. G. Beardsley, C. L. Bailey and John Clemons.

The First National Bank of Elmwood was founded Nov. 16, 1886 by Edwin Jeary. The American Exchange Bank was organized on July 13, 1889. To date this bank is still doing active business.

The churches played a prominent part in the growth of Elmwood for in 1874 the Methodist church was organized in the Stove Creek school house one mile east of Elmwood. In the early days the minister went from one settlement to another on horseback, hence were called "Circuit Riders".

Rev. W. K. Laufburron was appointed to Stove Creek in 1879. There being no parsonage, C. D. Clapp donated a lot and helped build a home north of the G. G. Douglas home.

Following came the Christian Church organized in 1874 by Elder Cyrus Alton, the present church being built in 1885. The Lutheran church was built in 1891. Has since been torn down. Also since been torn down. Meetings prior to that in the G. A. R. hall.

The Catholic church mass was first held in this community by Rev. Emmanuel Hartig A. S. B. in the home of Michael McGuire, in 1886 the Rev. Romans A.

On Wednesday evening at 6:30 Plattsmouth Lodge No. 6, Ancient Free and Accepted Masons, will observe at a centennial banquet the 100th anniversary of the chartering of the lodge.

Plattsmouth lodge has a long and brilliant record of service, not only to Masonry, but as well to the state of Nebraska, for its part of helping to build the west, to bring to this area Christian teaching, education and the development of mankind in this great state.

In the early settlement of the territory of Nebraska in the fifties there came many members of the Masonic order from the east and south to make this home in this new territory.

In the communities along the Missouri river, travel route to the west, settlers came to make their home, lodges of the order were established at Bellevue, later transferred to Omaha as Nebraska lodge No. 1, Western Star lodge No. 2 at Nebraska City and Capitol lodge No. 3 at Omaha.

These lodges were designated as the first grand lodge of Nebraska. On June 2, 1858 this grand lodge chartered three additional lodges, Nemaha lodge No. 4 at Brownville, Omaha lodge No. 5 at Dakota City and Plattsmouth lodge No. 6. From that time until the close of the civil war in 1865 there were no more lodges chartered.

Plattsmouth lodge No. 6 selected as the first worshipful master, Dr. Edmund A. Donelan, president of the Nebraska territories legislative, and mayor of Plattsmouth. Its membership comprised many that later had a great part in the development and history of the state which was admitted to the union on March 1, 1867. Early day members included Dr. Robert Ramsey Livingston, later colonel of the First Nebraska infantry in the civil war, discharged as Brig General as well as William D. McCord, lieutenant colonel of the regiment.

Plattsmouth lodge also gave two grand masters to the order in Nebraska, Daniel H. Wheeler and William A. Robertson, William F. Evers, grand commander of the Knights Templar in 1950 and James M. Robertson, of this city, while a member of lodge No. 19 of Lincoln, spent a greater part of his life here, was a member of Zion chapter No. 3 and Mt. Zion commandery, No. 5, served as grand commander of the Knights Templar in 1925.

Hon. Francis E. White who served as secretary of the grand lodge of Nebraska for a period of twenty-five years was also an early day member of Plattsmouth lodge.

Among the distinguished guests expected here for the centennial banquet will be John H. Beaver, grand master of the grand lodge, of Gering.

## Central Cass Church Census Being Planned

Five ministers from central Cass County met in the Weeping Water Methodist Church Thursday night, October 9, to make plans for a religious census of central Cass County.

The ministers were Mr. J. E. Aeschbacher of the Avoca Congregational Church, Mr. C. F. Weidemann of the Nehawka and Weeping Water Methodist Churches, Robert Rueter of the Louisville Christian Church, Mr. Don Webster of the Louisville Methodist Church, and Mr. Victor Schwarz of the Weeping Water Christian Church.

Plans were made to assign areas to Nehawka, Avoca, Weeping Water and Louisville. The Churches in each town are assuming the responsibility of making the canvass in their area.

The purpose of the canvass is to secure information concerning religious preference or membership of everyone in the area.

Nov. 9 was set as the day for the canvass. In the afternoon of that day workers from the participating Churches will knock at the door of every home in central Cass County.

The Churches of western Cass County are also making plans to canvass their area in a similar way, as are also the Churches of eastern Cass County. This religious census is being sponsored by the Nebraska Council of Churches and the participating Churches of Cass County.

Shaffel Vicar general of Omaha Diocese celebrated mass in the G. A. R. Hall.

The Evangelical church was built in 1891. Was first known as the Evangelical Association. Now is known as Evangelical United Brethren.

The first school called Stove Creek was built in 1871, one mile east of where Elmwood now stands. When the railroad went through and the town of Elmwood was established in 1886 a new district was established which was called No. 95 and it was comprised of part of Stove Creek district.

The Stove Creek School was then moved two miles east. The first school in Elmwood was a wooden building in the center of town, later a two story building, with two rooms upstairs and two below was built in 1889.

The first graduating class was in 1894. There are two members of the original class still living Willard Clapp, and Mrs. Grace Plybon both of Elmwood.

Since a great number of the early settlers were ex-servicemen, having seen service in the Civil War it was only natural that they organize a military organization which was to be known as Keneau Post No. 123 G. A. R. Elmwood also had a fair, for four years from 1892-95. Elm-

(Continued on Page 7)