

SAVE \$ SAVE \$ SAVE \$ SAVE \$ SAVE \$ SAVE \$ SAVE \$ SAVE \$ SAVE \$

# PACK IN THE SAVINGS



# CART-LOAD SALE

OPEN EVERY NIGHT  
TILL 9 P. M.



SWEET RIPE TEXAS

## Watermelon

3<sup>c</sup> POUND

Every one Guaranteed

LIBBY'S FROZEN

## LEMONADE

3 25¢

6 OZ. CANS

Bobs' — Asst. Flavors

## SODA POP

Case of 24 69c Plus Dep.

Del Monte

## Orange Juice

4 46 oz. Cans \$1

Santa Rosa — Crushed

## PINEAPPLE

2 No. 303 Cans 35c

VALU — YELLOW CLING — SYRUP PACK

## SLICED PEACHES

5 Big No. 2 1/2 Cans \$1

- Valu OLEO 2 Lbs. 39¢
- Assorted Flavors JELLO 3 Pkgs. 19¢
- Wilson's BAKERITE 3 lb. Can 69¢
- Heinz Tomato KETCHUP 14 oz. Bottle 19¢
- Royalty Crushed PINEAPPLE Flat Can 9¢
- Van Camp Pork & BEANS 16 oz. Can 10¢
- First Lady PEAS 303 Can 9¢
- Hy Klas COFFEE Pound Can 79¢
- Beet SUGAR 10 Lb. Bag 89¢
- Kraft VELVEETA 2 lb. Loaf 69¢
- Hy Klas BUTTER Lb. 59¢
- Hy Klas FLOUR 10 lb. Bag 79¢

Gold Seal — Whole

## SWEET PICKLES

3 Quart Jars \$1

DEL MONTE

## CATSUP

2 14 oz. Btls. 25¢

Hy Klas — All Vegetable

## Shortening

3 Lb. Can 69c

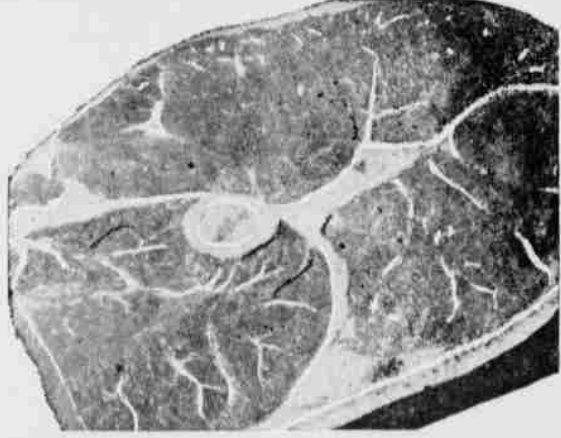
U S D A CHOICE

## GROUND BEEF

3 Lbs. 89¢

## ROUND STEAK

POUND 59¢



# RUBACK'S SUPER MARKET

Valu — Pure Strawberry

## PRESERVES

5 10 oz. Jars \$1

Hy Klas — Salad

## DRESSING

Quart Jar 29c

All prices effective Friday August 2 through Thur. August 8  
WE RESERVE THE RIGHT TO LIMIT QUANTITIES

LOW, LOW PRICES - and - S.N. GREEN STAMPS

SAVE \$ SAVE \$ SAVE \$ SAVE \$ SAVE \$ SAVE \$ SAVE \$ SAVE \$ SAVE \$