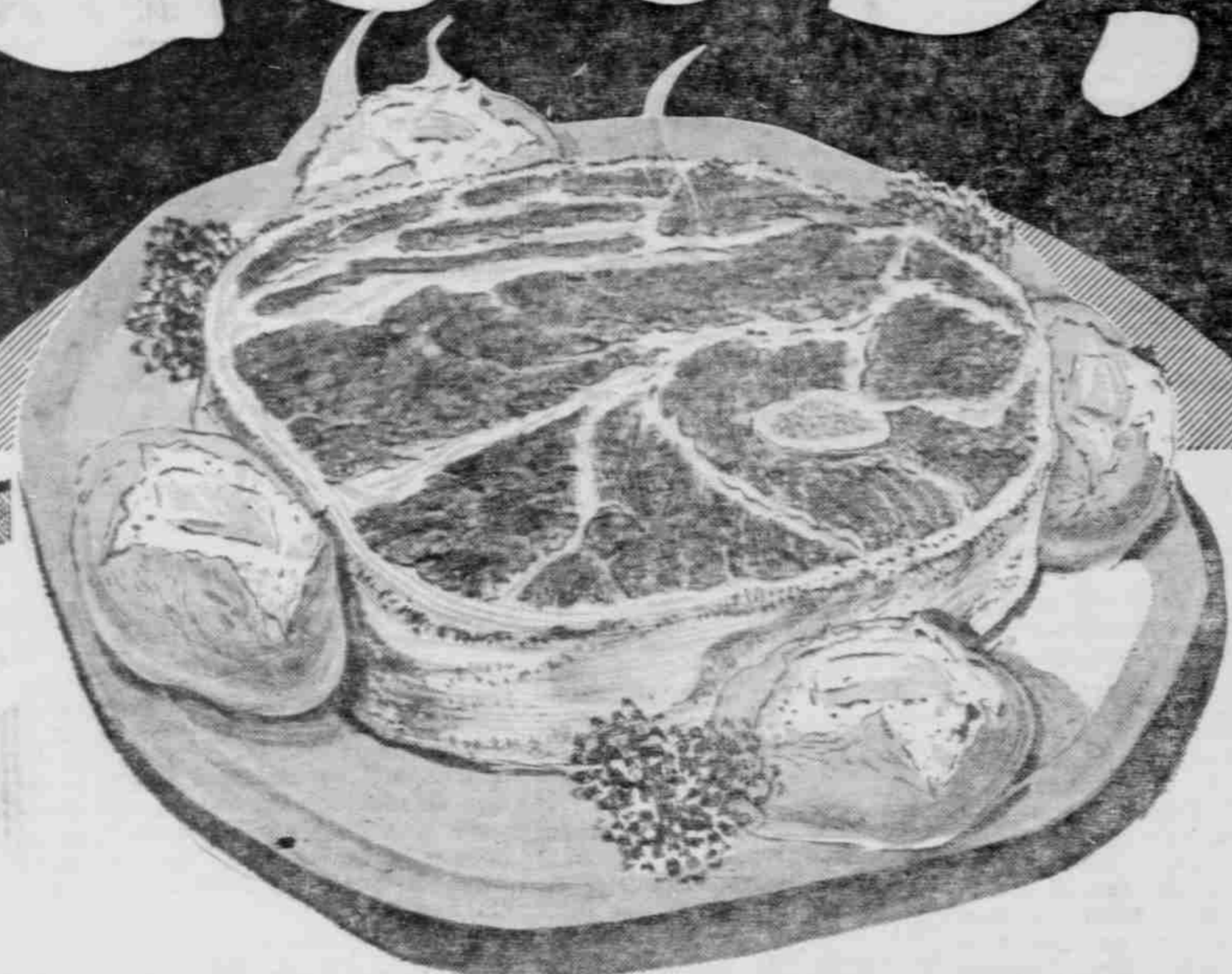


GOOD!



The U.S. Government Says So ...Your Taste Proves It!

You can be sure of USDA Choice beef . . . deliciously-good, tenderly-good, temptingly-good beef . . . every time you shop at RUBACK'S. For USDA Choice beef is a high quality grade established by rigid standards of the United States Department of Agriculture whose USDA Choice grademark appears on the beef we sell. It's your assurance of everything good in beef — and your taste proves it! Enjoy good beef — choose your favorite cuts from our value-packed cases, or, if you wish, any one of our courteous butchers will be more than glad to make any cut to your special order — and at RUBACK'S each and every cut carries our unconditional guarantee of satisfaction . . .

USDA CHOICE
BEEF BLADE CUT Pound **29^c**
ROAST
USDA CHOICE — STANDING
RIB ROAST L.B. **59^c**



Fresh Ground From
USDA Choice Beef
Ground BEEF
3 LBS. **\$1**

Hy Klas — Thick Sliced
BACON 2-lb. Pkg. **79^c**

USDA Choice Beef
Short Ribs lb. **29^c**

USDA Choice
Sirloin Steak
Pound **73^c**

USDA Choice
Club Steak
Pound **65^c**

USDA Choice — Boneless
BEEF STEW Pound **59^c**
Tender — Thinly Sliced
BEEF LIVER Pound **39^c**
Lean Meaty Pork
SPARE RIBS Pound **39^c**
No. 1 Large
BOLOGNA Pound **39^c**

Hy Klas Fancy Fruit
COCKTAIL 2 No. 303 Cans **39^c**

Hy Klas — Smooth & Creamy
Salad Dressing Quart Jar **39^c**

Wathena Pure Strawberry
PRESERVES 20-oz. Glass **39^c**

Maine — In Oil
SARDINES 3 Flat Cans **25^c**

Hy Klas Pure Ground Black
PEPPER 1 1/2-oz. Ctn. **10^c**

Hy Klas — Pure
ORANGE JC. 3 46-oz. Cans **\$1**

Hy Klas
Luncheon Meat 12-oz. Can **29^c**

Hy Klas — Orange Pekoe
TEA BAGS 2 16 Count Pkgs. **29^c**

Valu — Green
PEAS 2 No. 303 Cans **25^c**

Hy Klas — Royal Anne
CHERRIES 4 No. 303 Cans **\$1.00**

Hy Klas — New Crop, Cut
ASPARAGUS 2 No. 300 Cans **49^c**

Hy Klas — Fancy Indiana
TOMATO JUICE 46-oz. CAN **25^c**

Northern — Paper
TOWELS ROLL **15^c**

Ohio
BOOK MATCHES CTN. OF 50 BOOKS **10^c**

Hy Klas — Elbo
MACARONI 2-LB. BAG **29^c**

For Whiter Washes
CLOROX 1/2 GAL. JUC **29^c**

TRU VALU — TOMATO
CATSUP 2 12-oz. Bottles **25^c**

SKIPPY — CREAMY OR CHUNK STYLE
PEANUT BUTTER 13-oz. Jar **39^c**

Peter Piper Whole
Sweet Pickles 3 Quart Jars **\$1**

Hy Klas Fancy
SPINACH 2 No. 303 Cans **29^c**

Wishbone — Italian Style Salad
DRESSING 3 8-oz. Brls. **\$1**

Hy Klas — All Vegetable
Shortening 3-lb. Can **79^c**

Kraft
VELVEETA 2-lb. Loaf **79^c**

Fro Joy
ICE CREAM 1/2 Gal. Pkg. **69^c**

Ass'l. Flavors
JELL-O 3 Pkgs. **19^c**

Save All Grated
TUNA 2 Cans **35^c**

Del Monte Crushed
PINEAPPLE No. 2 1/2 Can **29^c**

— THE GIANT NEW —
RUBACK'S SUPER MARKET

Prices good Friday, July 6 through Thursday, July 12

We give *S.M.* GREEN STAMPS

We give *S.M.* GREEN STAMPS