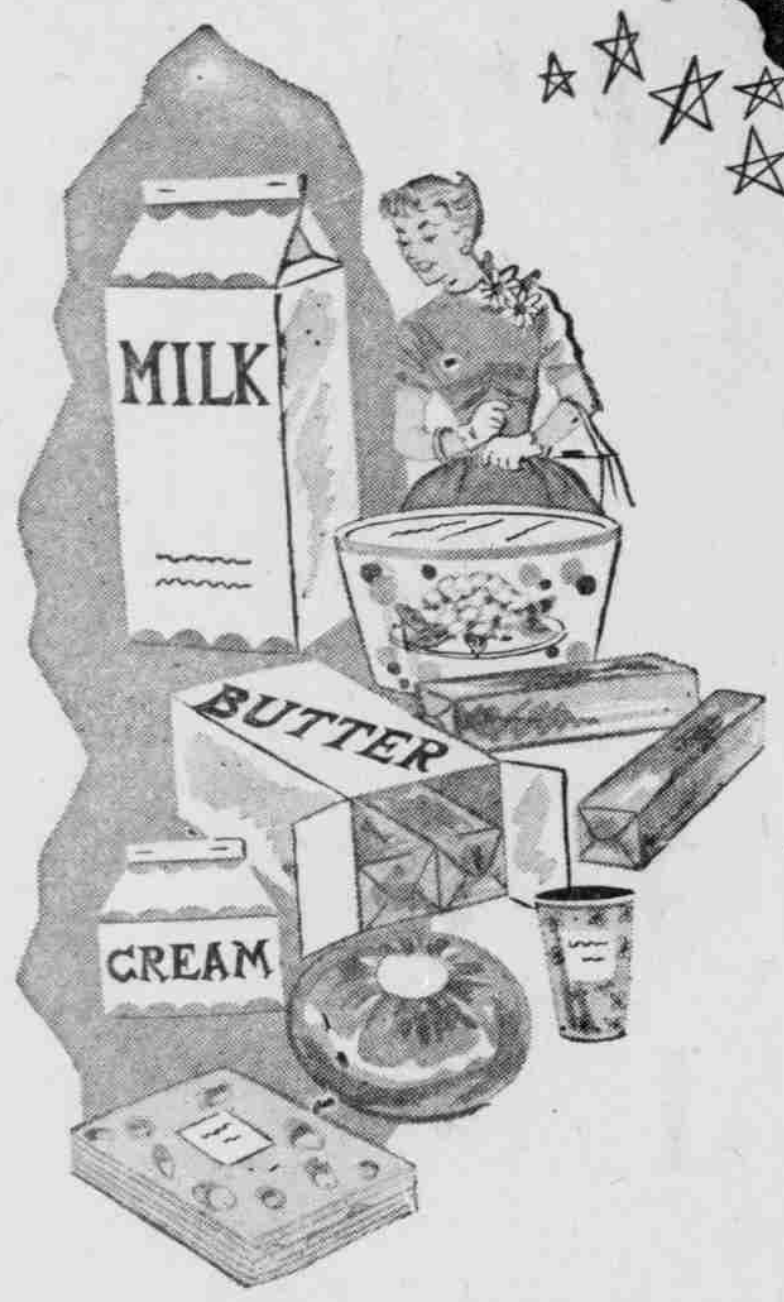


The **STAR** of the team likes

the "MILKY way"



IGA VIT. D
MILK 12-oz. Pkg. 3 — 1/2 Gal. or 6 Qts. **\$1.00**

FAIRMONT
BUTTER LB. **65c**

Shurfresh MARGARINE 2 lbs. 39c Shurfresh CHEESE FOOD 2 lbs. 63c

Kraft Velveeta Cheese, 2-lb. Pkg. . . . 79c

FREE! FREE! FREE!

1 QT. **Root Beer** with every **ICE CREAM** **89c**
 Mason's 1/2 Gallon FAIRMONT

Milk, the drink starred by healthy youngsters everywhere! Make it a habit to include all the delicious dairy products in your diet this month during National Dairy Month and all year for better health!

COMMUNITY Savings STAMPS The Community Saving Stamp Headquarters Save Three Ways . . . **COMMUNITY Savings STAMPS**

Cash - Merchandise - Low, Low Prices

We Give and We Redeem Community Saving Stamps

SOENNICHSEN'S are pleased and happy to announce that **SAM ARN** has returned as manager of our meat department

We will feature only USDA Choice Grade Beef, Veal, Lamb and Pork. We will be pleased to make any special cuts you desire.

FRESH GROUND BEEF, ROASTS, CHOPS, STEAKS AND SMOKED MEATS OUR SPECIALTY

★★★ **STARRED FOR EXTRA VALUES** ★★★

ROYAL RIO ★ **TOMATO JUICE** 46-oz. Tin **29c**

LAKESIDE — NEW CROP ★ **JUN'ET PEAS** 303 Tin **2 FOR 35c**

LAKESIDE ★ **Cream Style CORN** 303 Tin **2 FOR 29c**

DEL MONTE ★ **Chunk TUNA** 6 1/2-oz. Can **25c**

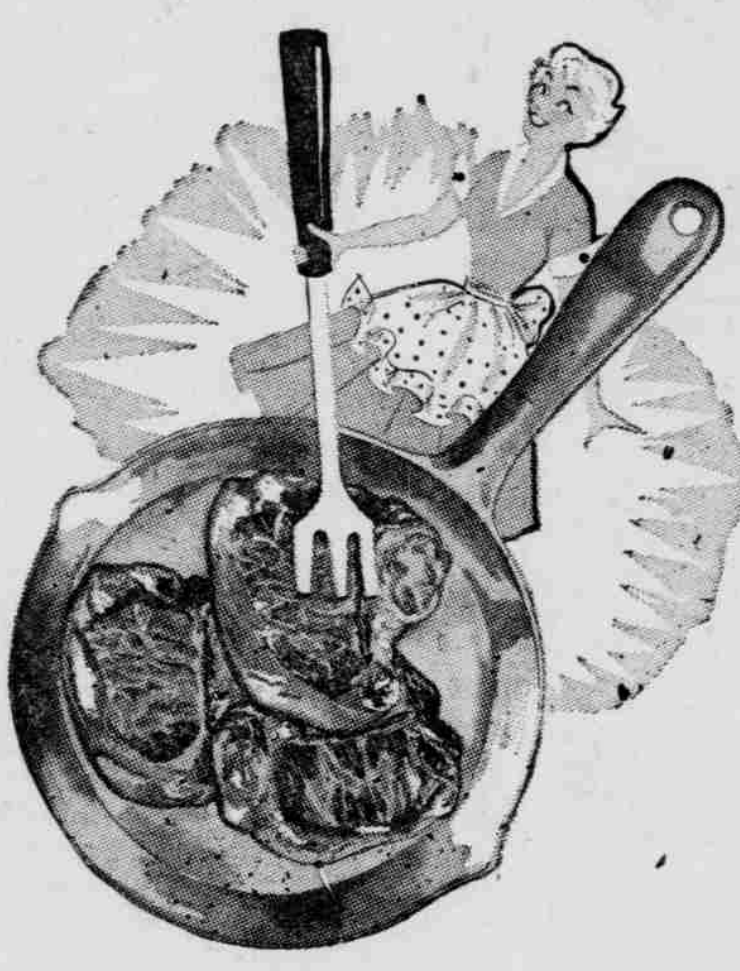
SAM PAN ★ **Calif. PEARS** No. 2 1/2 Tin **33c**

Dry Yellow **Onions** 3 LB. - - **25c**

Crisp Cello **Carrots** 2 PKGS. - **23c**

Crisp, Green **Celery Hearts** PKG. **27c**

Mexican, Large Size **Pineapple** - EACH **35c**



IGA All Meat Skinless
WEINERS POUND **39c**

IGA No. 1 Mild Cured — 1-lb. Tray Pak
Sliced BACON LB. **45c**

USDA Choice
Swiss STEAK LB. **59c**

Swift Premium Meat Loaf
 Large Bologna LB. **39c**

Home Made Ham Salad . . . **39c**

Arn's Home Made Breakfast Treat
Pork Sausage 3 LBS. **\$1**

Van Camps 300 Tin **Pork & Beans** 10c

Heinz 14-oz. Bottle **Ketchup** . . 19c

Real Lime Frozen 6-oz. Tin **Limeade** . . 10c

Kool Aid 6 for 29c

New Instant Pt. 39c **Spry** . . qt. 69c

Beet Sugar 10-lb. Bag **99c**

Campbells 6-oz. Tin **Tomato Soup** 10c

Jello . 3 pkgs. 19c

Cal Grove 6-oz. Tin **Lemonade** . . 10c

Lge. Bottle **Grapette** . . 15c

Big Value **Coffee** . . lb. 75c

Fairmont Blue Ribbon 1/2 Gal. **Ice Cream** . . 69c

Frozen Corner

Fairmont 6-oz. **ORANGE JUICE** . . . 2 for 39c

Fairmont 6-oz. **LEMONADE** 2 for 33c

Fairmont **FRENCH FRIES** . . . 2 for 35c

IGA Sliced 10-oz. Pkg. **STRAWBERRIES** 4 for \$1

Shurfine **ORANGE JUICE** . . . 2 for 29c

Nabisco Donut **COOKIES** 1-lb. Pkg. **49c**

Sunshine Hydrox **COOKIES** **39c**

the "RIGHT WAY" to save

WHERE YOU GET MORE FOR YOUR FOOD DOLLAR

LOW PRICES EVERY DAY

Soennichsen's IGA FOOD STORE

ESTABLISHED 1889

FREE PARKING