

IT'S A
**SHOPPING
CART of
TOP VALUES**
FOR YOU AT HINKY DINKY

Regular Price 35c—Save 6c on

Del MONTE PEACHES

Yellow Cling
Sliced or
Halves
Lge. No. 2 1/2 Can

29¢

Regular Price 39c—Buy 3 Cans Save 17c on

FRUIT COCKTAIL

Food Club
Fancy in
Heavy Syrup
Large No. 2 1/2 Cans

3 For \$1



Food Club
Sliced
PINEAPPLE
No. 2 1/2 Cans

3 FOR \$1

APRICOTS Gaylord Whole In Heavy Syrup No. 2 1/2 Can, 27¢

3 for 79¢ Reg. Price 29c Buy 3 Save 8c

Gaylord Butter Fancy Quality Pound

59¢ Reg. Price 65c You Save 6c

Grapefruit Segments, Elna 17-Oz. Cans

2 for 29¢ Reg. Price 33c Buy Two Save 4c

CHOCOLATE Chips, Baker's, Lge. 12-Oz. Bag

3 for \$1 Reg. Price 39c Buy 3 Save 17c

RICE KRISPIES Kellogg's New 13-Oz. King Size

29¢ Reg. Price 35c You Save 6c

CHUN KING Meatless Chow Mein 17-Oz. Can With Can of Noodles Attached

43¢ Reg. Price 48c You Save 5c

TOMATOES Elna Quality Large No. 2 1/2 Cans

2 for 49¢ Reg. Price 27c Buy 2 Save 5c

Cherries White Tag Royal Anne or Dark Red, No. 10 (Near Gallon) Can

98¢ Reg. Price 1.29 You Save 31c

Food Club
Red Pitted Pie

CHERRIES
17-oz. Cans

2 FOR 35¢

FROZEN FOOD FEATURES



GRAPE JUICE Top Frost 6-oz. Cans

6 for \$1

STRAWBERRIES Top Frost Sliced 10-oz. Cartons

4 for \$1

CORN Top Frost Cut Golden 10-oz. Cartons

6 for \$1

PEACHES Top Frost Sliced Elberta Freestone, 16-oz. Can

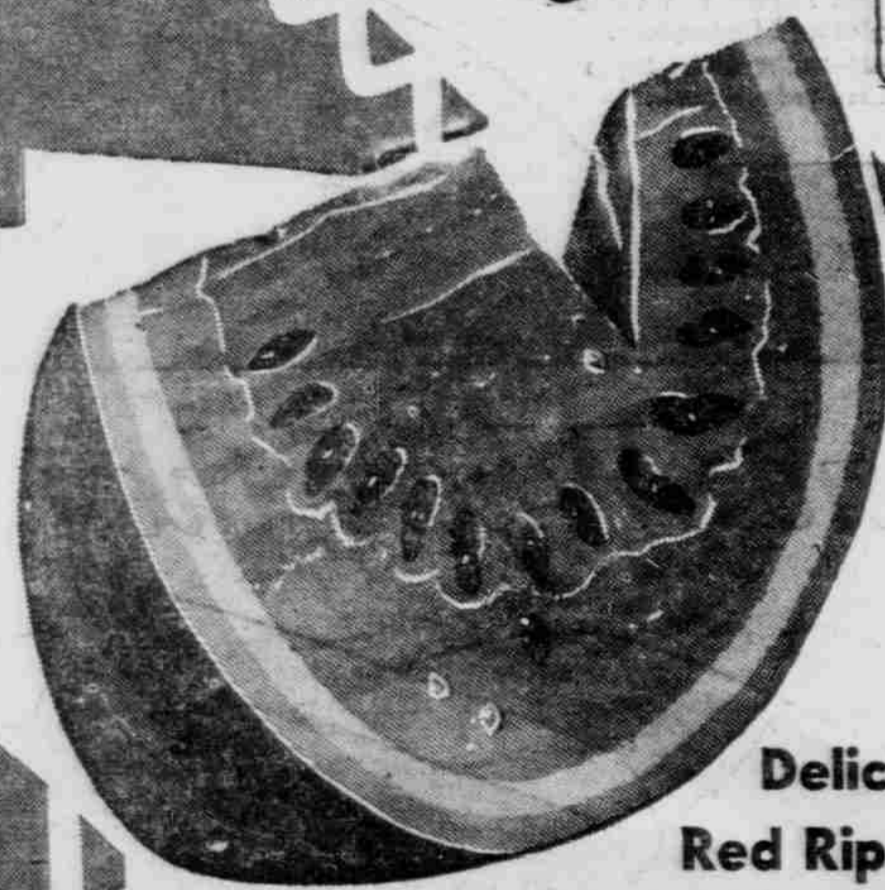
29¢

Green Beans Top Frost Cut or French Style, 10-oz. Carton

23¢

Peas & Carrots Top Frost 10-oz. Carton

21¢



WATER-MELON

9¢

Delicious, Sweet,
Red Ripe, Florida's
Finest Quality,
Half or Whole, Lb.

CANTALOUPE

Vine Ripened
Pink Meat
Full Flavored
Large Size, Lb.

17¢

SWEET CORN Fresh Tender Fla. Golden Bantam, Large Ears, lb.

13¢

ONIONS U. S. No. 1 New Crop Texas, Lb. 5c

4 Lbs. 19¢

GRAPEFRUIT Indian River, Florida's Very Finest Sweet and Full of Juice, Lb.

10¢

SUGAR

Pure Granulat'd Beet, 10-lb. Bag

99¢

Powdered or Brown 1-lb. Cello Bags

2 FOR 19¢

CRACKERS

Vista Pak 1-lb. Pkg.

19¢

2-lb. Pkg.

37¢

NORTHERN NAVY BEANS

2 LBS.

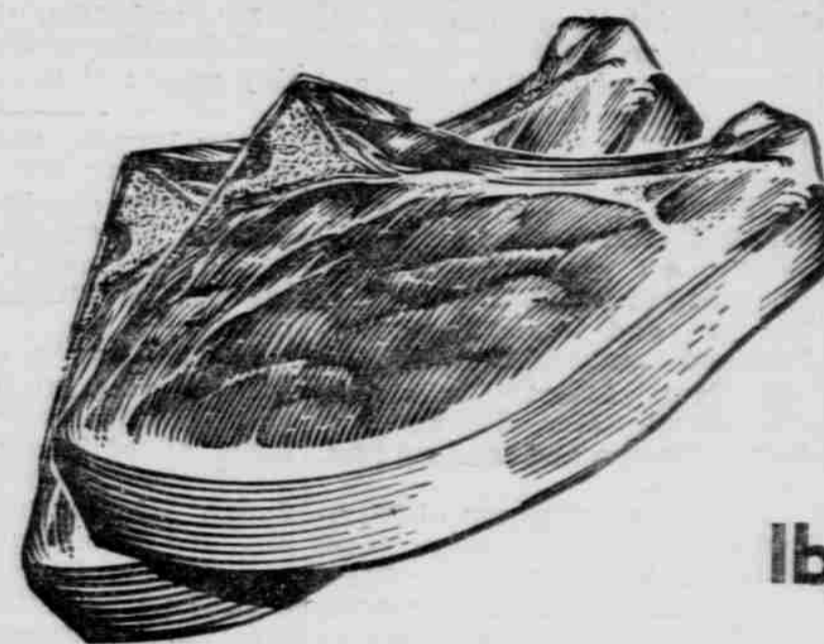
19¢

CAMPBELL'S TOMATO SOUP

11-oz. Can

10¢

PORK CHOPS



RIB CENTER CUT
E. V. T. EXTRA
VALUE TRIM

lb. **59¢**

SPARE RIBS

Small, Lean, Meaty, Lb.

39¢

RIB ROAST

U. S. Choice 7" Cut, E.V.T., Lb.

59¢

Wilson's Certified Smoked Pork Butts

TASTY MEATSLb. **59¢**

LIVER SAUSAGE Wilson's QualityLb. **39¢**

MINUTE STEAK Special E.V.T. BonelessLb. **89¢**

GROUND BEEF **3 Lbs. \$1**

BEEF SAUSAGE Settler'sLb. **29¢**

FRANKS Swift's Premium Skinless, Lb. Cello **39¢**

GERVELAT Swift's Essex Summer SausageLb. **59¢**

LARGE BOLOGNALb. **39¢**

RIB STEAK U. S. Choice E.V.T.Lb. **65¢**

BACON Swift's Premium Thick Sliced, 2-Lb. Pkg. **75¢**

CORN BEEF Swift's Premium 1 1/2 to 2-lb. Cry-O-Vac, Lb. **59¢**

CHICKEN BREASTS Top Frost Lb. **99¢**

CHICKEN LEGS Top FrostLb. **95¢**

CHICKEN THIGHS Top FrostLb. **85¢**

CHICKEN WINGS Top FrostLb. **39¢**

HEARTS & GIZZARDS 5-Lb. Cup **98¢**

HINKY DINKY

LAMB

Shoulder Roast Lb.

39¢

Shoulder Steak Lb.

49¢

Ad effective through Wed., May 23rd. We reserve the right to limit quantities.