

What is it you want the most
a roaster, blanket, dishes?
Hinky-Dinky gives Top Value Stamps
and they'll fill all your wishes

GET BEAUTIFUL GIFTS
WITH TOP VALUE STAMPS



GET BEAUTIFUL GIFTS
WITH TOP VALUE STAMPS



CABBAGE

Fresh Green Solid New Texas, Lb. **5c**

LETUCE **10c**
Fresh Crisp Solid Calif. Iceberg, LGE. Heads, Cello Wrapped, Lb. ...



Fancy Fresh Tender, Tops Removed Cello Bags **10c**

Idaho Russet Washed Large Size "A" Utility Grade **10-Lb. 43c**
Vent View Bag ... 100-Lb. Bag When Packed, 3.49

Extra Fancy Apples

| | | |
|--|---------------------------------|-----------------------------------|
| Red Snappy Medium Size Wash. Delicious | Medium Size Wash. Red Delicious | Firm Yellow Ripe Central American |
| 4-Lb. Cello 49c | Lb. 19c | Bananas 2 lbs. 25c |

GELATINE Desserts, Food Club, Assorted Flavors, Reg. Pkgs. **4 for 19c**

CHILI CON CARNE Scott County 16-oz. Can **19c**

CAKE MIX Food Club White, Yellow or Devil's Food, 19-oz. Pkgs. **2 for 49c**

FRANK'S KRAUT Large No. 2 1/2 Cans **2 for 35c**

GAYLORD BUTTER Top Quality Pound **59c**

Preserves Food Club Pure Seedless Black Raspberry, Large 24-oz. Jar **59c** Popcorn Quaker white or yellow, Large 20-oz. Packages **2 for 39c**

Bean Soup Brooks, 10 1/2-oz. Can, 14c **2 for 27c** Salad Oil Food Club, Pint 33c **59c**

Cream of Mushroom Soup, Brook's 10 1/2-oz. Can **15c** Mayonnaise Food Club, Pint Jar **35c**

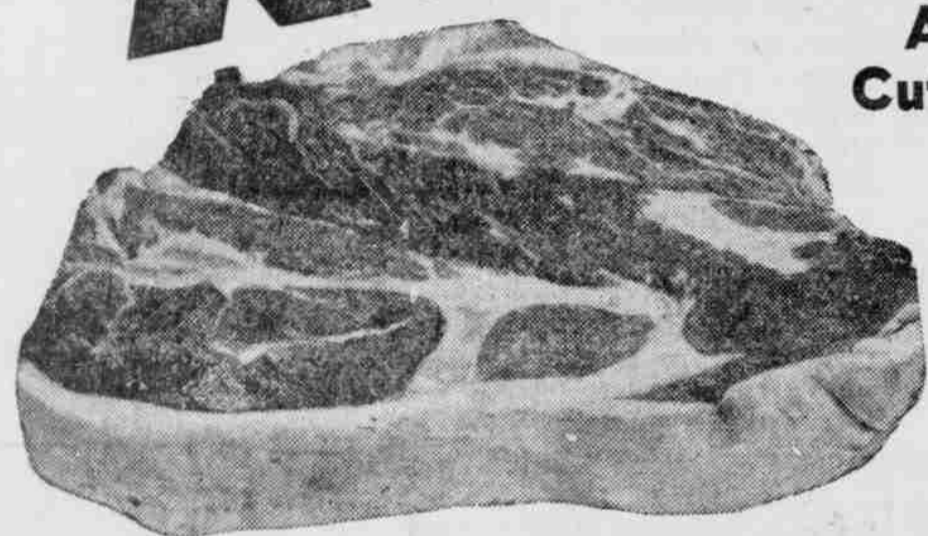
Chili Hot Beans Otoo 15 1/2-oz. Can **11c** Food Club Coffee 1-Lb. Vacuum Can **85c**

Pancake & Waffle Mix Food Club 2 1/2-lb. Pkg. **33c** Sweet Pickles Food Club Extra fancy cross cut, 22-oz. jar **49c**

Cane & Maple Syrup Food Club 12-oz. Bottle **27c** Bleach Des Moines, Quart 15c; 1/2 Gal. 27c **43c**

CHUCK ROAST 35c
U. S. Choice E.V.T. Corn Fed Beef, Blade Cut, Lb.

Arm Cut, Lb. **45c**



SIRLOIN STEAK

U. S. Choice E.V.T.—Extra Value Trim Corn Fed Beef, Lb. **69c**



Food Club Finest Pure **GRAPE JELLY** 12-oz. Jars **51c**

BOILING BEEF Rib Cut **2 lbs. 25c**

- | | |
|--|--|
| Freshly Ground From Selected Cuts | Wilson's Pork Sausage |
| Ground Beef 3 Lbs. \$1 | Porky & Bess Lb. Rolls 2 for 45c |
| Beef Heart For Added Variety, Lb. 19c | Wieners Armour's Skinless, 3-Lb. Bag \$1 |
| Beef Liver Lb. 39c | Bacon Wilson's Certified Sliced, 1-Lb. Tray Pack Package 45c |
| Wieners Swift's Premium Skinless, 1-Lb. Cello 45c | Bacon Armour's Star Thick Sliced, 2-Lb. Package 69c |
| Sausage Swift's Brookfield Skinless Links, Lb. 35c | Turey Necks Lb. 25c |
| Sausage Armour's Star Pure Pork Country Style, Lb. 39c | Breasts of Fresh Chicken, Lb. 99c |
| Large Bologna Lb. 39c | Legs & Thighs of Fresh Chicken, Lb. 79c |
| Smoked Pork Butts, Wilson's Certified, Lb. 49c | Wings of Fresh Chicken, Lb. 39c |



HEINZ Famous KETCHUP 14-oz. Bottle **19c**

TOP FROST IN TOP FROST

BREADED SHRIMP Top Frost, 10-oz. Carton **53c**

CHICKEN PIE Top Frost, 8-oz. Packages **5 for \$1**

GOLDEN CORN Top Frost, 10-oz. Cartons **2 for 35c**

TANGERINE JUICE Top Frost, 6-oz. Cans **7 for \$1**

SLICED PEACHES Top Frost, 12-oz. Cartons **2 for 35c**

MELON BALLS Dartmouth Honey Dew and Cantaloupe, 12-oz. Carton **25c**

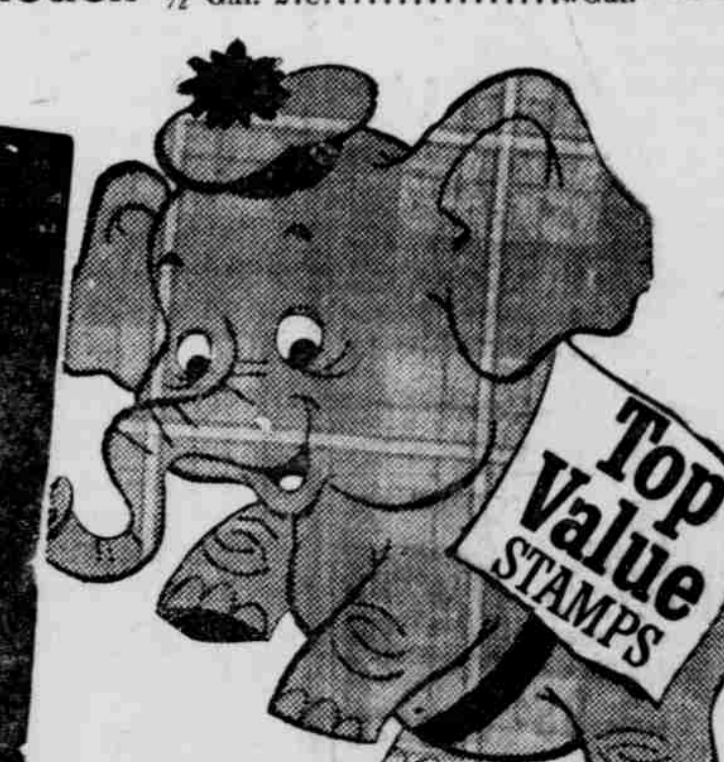
GREEN BEANS Top Frost Cut or French Style, 10-oz. Carton **25c**

BROCCOLI SPEARS Top Frost, 10-oz. Carton **25c**



Campbell's Tomato SOUP Regular Can **10c**

HINKY DINKY



All prices effective through Wed., Feb. 8. We reserve the right to limit quantities.