

SPORTS CORNER

Devils Drop From Ak-Sar-Ben Tourney With Loss to Blair

4 Years Service Seen by Navy Man

Returning to Plattsburgh by plane from San Diego, Calif., Tuesday morning was Willard Gunsolley, only son of Mr. and Mrs. Frank Gunsolley.

Willard received his discharge from the Navy as a Telemeter after four years service. He graduated from Plattsburgh high school in 1951; entered Peru State Teachers College, and interrupted his studies after the first semester there to enlist in the Navy at Omaha.

Mr. Gunsolley received his basic training at San Diego and spent the remaining enlistment time in the Far East aboard the U. S. S. Princeton for two years and the U. S. S. Kenneth Whiting for two years.

The Navy veteran will leave Sunday for Wayne where he will enter the second semester at Wayne State Teachers college.

Humboldt Hits W.W. Indians At Free Lane

WEEPING WATER — The Weeping Water Indians dropped a basketball game here Tuesday night to Humboldt by a score of 43 to 37.

The Indians had a lead at the end of the first quarter but that faded and Humboldt led at the half 24-18. Weeping Water, out-scoring the visitors 11 points to 9 in the third quarter, edged up to trail 29-33 at the end of three quarters but Humboldt came back, held to the win.

Chuck Stacey led the Indians with 16 points. Gerald Roe led Humboldt with 18 points.

The visitors won at the free throw line.

	fg	ft	pf	tp
Weeping Water (37)	1	0	5	2
Ludwick	3	1	0	7
Colbert	7	2	3	16
Stacey	4	4	3	12
Colbert	0	0	1	0
Seegar	0	0	1	0
McDonald	0	0	1	0
Totals	15	7	13	37

	fg	ft	pf	tp
Humboldt (43)	2	0	1	4
Blecha	6	5	3	18
Roe	1	6	0	8
Haith	2	0	2	4
Rexrath	4	1	2	9
Glatner	15	12	8	43

SHAMES DRUNK DRIVERS

PARMA, OHIO—Trying a new appeal against drunk driving, Parma police have erected a sign along a busy road, reading: "Shame on you for driving after drinking."

Cass Theatre

Plattsburgh
Last Time Thurs., Jan. 19
A cast of thousands in Howard Hawk's
"LAND OF THE PHAROHS"
All in Cinema Scope and color!
Also Cartoon Comedy
Fri. & Sat., Jan. 20-21
Robert Wagner and Terry Moore in
"BENEATH THE 12-MILE REEF"
The marvel of our age... takes you under the sea! All in color and Cinema Scope!
Also Comedy and Cartoon in Cinema Scope!
Matinee Saturday 2:30
Nights 7:00 & 9:15
Sun., Mon., Tues., Jan. 22-23-24

CALLING ALL LAUGHERS... WE'RE GIVING SNEEZES AND ROCKING THE RIFLES!
DEAR MARTIN
JERRY LEWIS
YOU'RE NEVER TOO YOUNG
WITH DIANA LYNN - NINA FOCU

Also Cartoon & News Matinee Sunday 2:30
Nights 7:00 & 9:15

Indians Pluck Eagle Quintet Score 60-48

EAGLE—Weeping Water defeated Eagle here Friday night by a score of 60 to 48. The Indians took the lead at the opening of the game and kept it, never in serious danger. Even a 19-point Eagle push in the fourth quarter failed to threaten a long lead.

Walberg hit 19 points to lead Eagle. Chuck Stacey canned 19 for Weeping Water.

Weeping Water reserves licked Eagle reserves 48-40.

	fg	ft	pf	tp
Eagle (48)	9	1	4	19
Walberg	4	1	4	9
Hoover	3	1	3	7
Umland	1	0	2	2
Schroder	1	0	2	2
Rodaway	5	1	0	11

Totals 22 4 13 48
Weeping Water (60)

	fg	ft	pf	tp
Ludwick	4	0	3	8
Colbert	3	7	3	13
McDonald	3	1	2	7
Stacey	8	3	0	19
Colbert	1	0	1	2
Seegar	5	0	1	10
Stacey, Mike	0	1	0	1

Totals 24 12 10 60

Devils' Zone Whips Wahoo In Big Thriller

WAHOO — A zone defense net thrown on the Wahoo high school basketball team here Tuesday night brought a win for the Plattsburgh Blue Devils in a ball-in-the-air thriller. The Devils won 34-32.

Ed Egenberger was advancing the ball for Plattsburgh in the dying seconds with the game tied 32-32 when center Bob Beverage yelled for him to fire. Egenberger shot wide of the mark. Beverage grabbed the ball, stepped back toward forecourt and hooked. As the ball sailed toward the basket, the ending gun sounded, but the bucket was good, giving the Devils the win.

Wahoo's inability to adopt to the Plattsburgh zone caused them to score only eight points in the second half, compared to 24 in the first two periods.

Plattsburgh, behind 12 points at the half, 24-12, pulled within one point at the end of three quarters, 25-24, and raced down the line scoring nine points in the final quarter to win.

Bob Beverage led Plattsburgh scoring on free throws made. Hitting only one other from the field besides his thriller as the gun sounded, Beverage put in 13 out of 17 free throw chances, for a total of 17 points. Dan Huebner had 10.

	fg	ft	pf	tp
Plattsburgh (34)	3	4	2	2
Huebner	0	0	0	0
Long	0	0	0	0
Egenberger	0	0	0	0
Kaffenber	0	0	0	0
Beverage	2	13	3	0
Lewis	0	0	0	0
Martin	0	0	0	0
Wilson	0	0	0	0
Hirz	0	0	0	0
Grauf	1	1	3	0
Dasher	0	0	0	0
Wahoo (32)	fg	ft	pf	tp
Hofmann	3	0	5	0
Erickson	3	2	2	0
Biggerstaff	3	0	3	0
Vuclek	0	0	0	0
Olsen	4	0	1	0
Lindgren	0	0	0	0
Bovill	0	0	4	3

Score by quarters:
Plattsburgh 6 12 25 34
Wahoo 10 24 26 32

Sheep Shearing School Dates In February

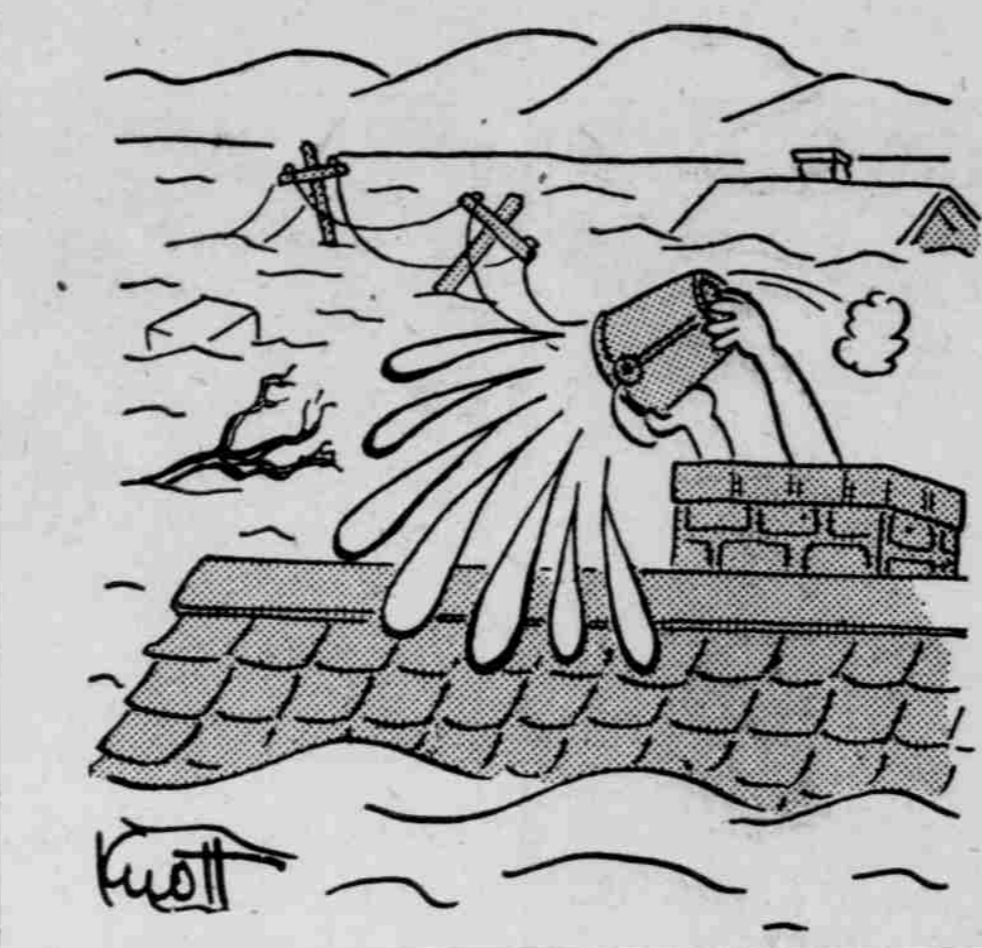
LINCOLN — Three sheep shearing schools will be held in Nebraska next month. The first school will be at the College of Agriculture in Lincoln Feb. 20-21; the second school will be at the John Ross Sheep Yards in Gibbon, Feb. 22-23; and the third school will be at the Vernon Linn farm, five miles west of Kimball, Feb. 24-25.

Registration is limited to 18 at each school, so anyone interested in learning to shear sheep is urged to enroll early. To enroll, send your name and address to W. W. Derrick, extension a n i m a l husbandman, College of Agriculture, Lincoln 3. The \$2 registration fee should be paid when you enroll.

Ed Warner, field man for the Sunbeam Corporation, will have charge of instructions. He will furnish all equipment. However, Derrick says anyone may bring his own machine if he cares to.

For further information, contact your county agent or the vocational agriculture teacher in your town.

Subscribe to The Journal Now!



Bowling

WOMEN'S LEAGUE 15th Week

	Pins	W	L
Soennichsen's	28405	32	13
Mack's	30030	31	14
Cass Bar	29058	30	15
Coffee Shop	27483	29	16
Hulda's	25801	26	19
Marge-Elmer's	27506	25	20
Platts. Bank	25894	25	20
Murdoch Bank	25637	23	22
B & H	25862	21½	23½
George's	25917	20	25
Bowlero	25017	20	25
Elliott's	25066	19	26
7-Up	25194	18	27
Feldhausen	24758	15	30
Swatek's	25210	14½	30½
Sattler's	24504	12	33

Season record:
High individual game, C. Krejci, 217.
High individual series, M. Schroeder, 525.
High team game, Mack's Kitchen, 745.
High team series, Mack's Kitchen, 2116.

Weekly records:
High individual game, D. Beins, 169.
High individual series, M. Wurtele, 449.
High team game, Swatek Hardware, 696.
High team series, Mack's Kitchen, 2026.

COMMUNITY LEAGUE 18th Week

	W	L	Pins
Platt. Trans.	36½	17½	42350
Shelly's	36	18	42533
Peters Serv.	34	20	40092
Riverview	29½	24½	41620
Schreiner's	28	26	40025
Cass Theater	28	26	39284
Murdoch Lions	27½	26½	38494
Fran & Estil's	26½	27½	38835
Conoco Serv.	26	28	39289
Corner Bar	26	28	38624
Soennichsen's	24½	29½	39418
Ernie's Bar	23½	30½	38702
Platts. Motors	23	31	38136
Steve Davis	22½	31½	40781
Rob See Co.	21	33	37133
Cass Drugs	19½	33½	38612

Season records:
High team series, Shelly's Sinclair, 2593.
High team game, Shelly's Sinclair, 922.
High individual series, L. Swoboda, 590.
High individual game, R. Snodgrass, 244.

One Minute Sports Quiz

1. When was the first Rose Bowl game?
 2. What teams played in that first regular series Bowl game?
 3. Who is the middleweight champion of the world?
 4. What pro football team recently won the 1955 championship?
 5. What team did they defeat?
- The Answers:
1. The regular annual series began in 1916.
2. Washington State and Brown, the former winning 14 to 0.
3. Ray Robinson.
4. The Cleveland Browns.
5. The Los Angeles Rams.

CORN IS KING

The nation's most valuable farm crop is corn, which this year was valued at \$4,169,538,000, compared with \$4,306,645,000 last year. Last year, compared with \$1.43 last year. Cotton was second, valued at \$2,420,529,000. Tomatoes ranked first among fresh vegetables, with a value of \$141,032,000, while oranges led the fruits with a value of \$288,158,000.

WINGLESS MISSILE

The Department of Defense has announced its plan to proceed with the development of a middle-range wingless missile, which would be supersonic and have the capability of blasting targets more than 1,000 miles from the firing site. The Air Force will have the primary role in developing this weapon.

Summer College Jobs Available With Government

Summer jobs for college students will be available next June in a number of federal agencies in a student trainee program sponsored by the United States Civil Service Commission, according to H. A. Hughton at the Plattsburgh Post Office.

Candidates will take a written test developed by the Commission to determine general and scientific aptitudes. The first examination will be in February.

Students who rank the highest and accept appointment, will take part in a work-study plan. The work periods may be either the summer vacation periods or part-time work during the school term. They will be paid from \$244 to \$284 a month during the work periods, but will receive no salary while attending college and must pay their own college expenses.

The program for 1956 in the Ninth United States Civil Service Region which includes Missouri, Iowa, Minnesota, Nebraska and North and South Dakota will be restricted to first, second, and third-year college students in chemistry, metallurgy, physics, mathematics, engineering, and soil science and conservation. High school seniors who plan to enroll in these subjects can compete for a limited number of positions at \$224 a month. Largest number of these jobs will be available for students in soil conservation, soil science, and in agricultural and civil engineering in the Soil Conservation Service of the Department of Agriculture.

Information about student trainee jobs is available at most college and university placement offices. Application blanks are available at most post offices.

December Dry Cold Nebraska Says Bureau

LINCOLN — December was cold and rather dry the weather Bureau reported here. Average temperatures ranged from a little over 1 degree below normal over the Panhandle to about 8 below over the extreme north-central portion of the state. The average was about the same as for the cold December of 1951. The total precipitation was generally above normal over the north central and northeastern portions of the State, and near normal elsewhere except that the southeastern and southwestern portions of the state were very dry.

Cold weather prevailed during most of the first three weeks of the month. However, there were no extremely cold days. Low temperatures ranged from near zero in the extreme southern portion of the State downward to -16 at Broken Bow.

The only storm of importance during the month occurred on the 2-3rd. This brought heavy snow to the central and northeastern portions of the state, with strong northerly winds. Blizzard conditions prevailed over the north-central and northeastern portions of the State. Many roads were blocked. Lighter snows, which drifted very little, occurred over most of the state around the 9th and 11th. Here was no precipitation of importance during the latter half of the month.

Snow and following cold weather were very unfavorable for livestock. Heavy feeding was required, and supplies were none too plentiful. During the last 10 days of the month, the snow melted over the southern half of the State and the Panhandle. Cured range and corn stalk fields became available and were used to reduce consumption of cured feed. Much of the wheat was protected by snow during the cold weather, but the snow blew off some of the fields in the west.

Legal Notices

MEETING OF DECEMBER 27, 1955 Plattsburgh, Nebraska December 27, 1955

Special meeting of the City Council held this date at 7:30 P.M., the regular meeting scheduled for December 26, 1955 postponed to this date on account of the observance of Christmas.

Present Mayor Leo R. Meisinger, Councilmen Robert T. Whelan, Douglas F. Wotier, Wm. G. Highfield and James F. McMillan, and City Clerk Albert Olson. Absent none.

Minutes of last meeting read and approved.

Pursuant to call of the Mayor and to published notice for a Board of Equalization for hearing objections, if any, and to adjust the special assessments for benefits on account of the application of asphaltic oil and work incidental thereto in Street Improvement Districts Nos. 116, 117, 118, 120, 121, 122, 123, 124 and 125, the Clerk reported that no written objections have been filed. No property owners appeared to make verbal objections.

After having fully considered the assessment schedules and plans, a resolution was adopted levying a special assessments against and upon each of the lots, parts of lots and parcels of ground liable to assessment for the cost of the construction of the improvements in the repetitive districts.

Motion carried that the City Clerk mail notices to all of the owners of the property assessed in the above street improvement districts and that a ninety day grace period be extended for the full payment of such assessments and that interest at 4 per cent per annum be charged after March 30, 1956.

A Resolution of Necessity was read for the creation of a sanitary sewer district for the proposed construction of a Sanitary Sewer in 12th Street to connect with the terminus of the present sewer at the north end of Oakmont Drive, and to be

designated as Sanitary Sewer District No. 13. Resolution adopted that the City Council meet in special session on January 11, 1956 at 7:30 p.m. for the consideration of the Resolution of Necessity and that notice be published of such meeting to hear objections to the passage of said resolution.

Reports of the Police Judge for the weeks ending December 17th and 24th were read and placed on file.

Parking meter receipts for the weeks ending December 19th and 26th were reported as \$211 and \$208.00 respectively.

Claims as listed on the following funds were allowed:

	General Fund
Plattsburgh Journal	33.23
Publ. Ord. No. 936 & minutes	23.76
Plattsburgh Journal	111.72
Publ. notices	
Plattsburgh Journal	
Publ. Notice Bd. of Eqizn	

Road Fund
Lester Taylor Street work 119.35
Orvel Adkins Street work 145.50
Roy H. Crawford Street work 139.50

Business Tax Fund
Norman Kellison Street work 144.15
Martin Sheldon Street work 139.50
T. S. McShane Co. Inc. 11.10

Gasoline Tax Fund
John Aitschaff Bulldozer work 65.00
Standard Oil Co. Gas 20.40
Wysel Auto Service Truck repairs 265.31

Fire Department Fund
The Balbach Co. Cyl. nitrogen 2.50
San. Sewer Dist. No. 12 Fund
Henningson, Durham & Richardson, Inc. Engrg. services 118.03

On motion the meeting adjourned.
LEO R. MEISINGER Mayor

ATTEST:
ALBERT OLSON City Clerk
No. 3117—Jan. 19, 1956

Subscribe to The Journal Now!

Marine Reserve Chance Announced

Commencing this month, Marine recruiters in this area are authorized to enlist a restricted quota of qualified young men into the Marine Corps Reserve for a short term, 2 year enlistment. This policy has just been announced by Marine headquarters and pertains to the local recruiting office which is located in Selective Service office, Cass county courthouse.

Sergeant N. H. West said today that this is the first time in over two years that the Leathernecks will be accepting men for this short enlistment. He also emphasized that his quota for the two year enlistment is restricted to those who meet specific qualifications but he will welcome an opportunity to talk to any applicant who is interested. Men accepted will be sent to San Diego, Calif., for initial training and then will be eligible to qualify for the Corps' 147 specialist schools and over 400 specialists jobs in the Marines great air, sea and ground team.

Sergeant West will be at the Cass county courthouse in Plattsburgh from 1 p. m. to 3:30 p. m. each Tuesday.

When You Think of SHOES Think of WOSTER'S X-RAY FITTING

Only 3 Deals Left!

This \$10.95 table for only \$1.00
"Posture" chair \$29.95
Drop Leaf table \$10.95

This table for \$1.00 with every 'Posture' chair ordered!

Adjustable Posture Chair
Scientifically-designed to eliminate office fatigue and improve efficiency. Buoyant foam rubber cushion seat 16½" x 13½". Both chair and seat have adjustable controls. Smooth rolling ball-bearing casters. Beautifully upholstered in U.S. Rubber's famous Naughayde. Will not stain, crack or peel. In your choice of brown, green, gray and wine.
No. 2815 \$29.95

Sturdy, Steel Drop-Leaf Table
Use it as a salesman's desk where space is scarce. Ideal for the student in the family. Makes homework more attractive. Use it as a typewriter table. Also handy in the kitchen. Drawer for supplies and shelf for books. Rolls smoothly on four casters. Roomier than most tables, opens up to 39" x 17". Typewriter desk height. Because of the heavy gauge steel and strong piano hinges it will last a lifetime. Green or gray enamel finish.
No. 759 \$10.95