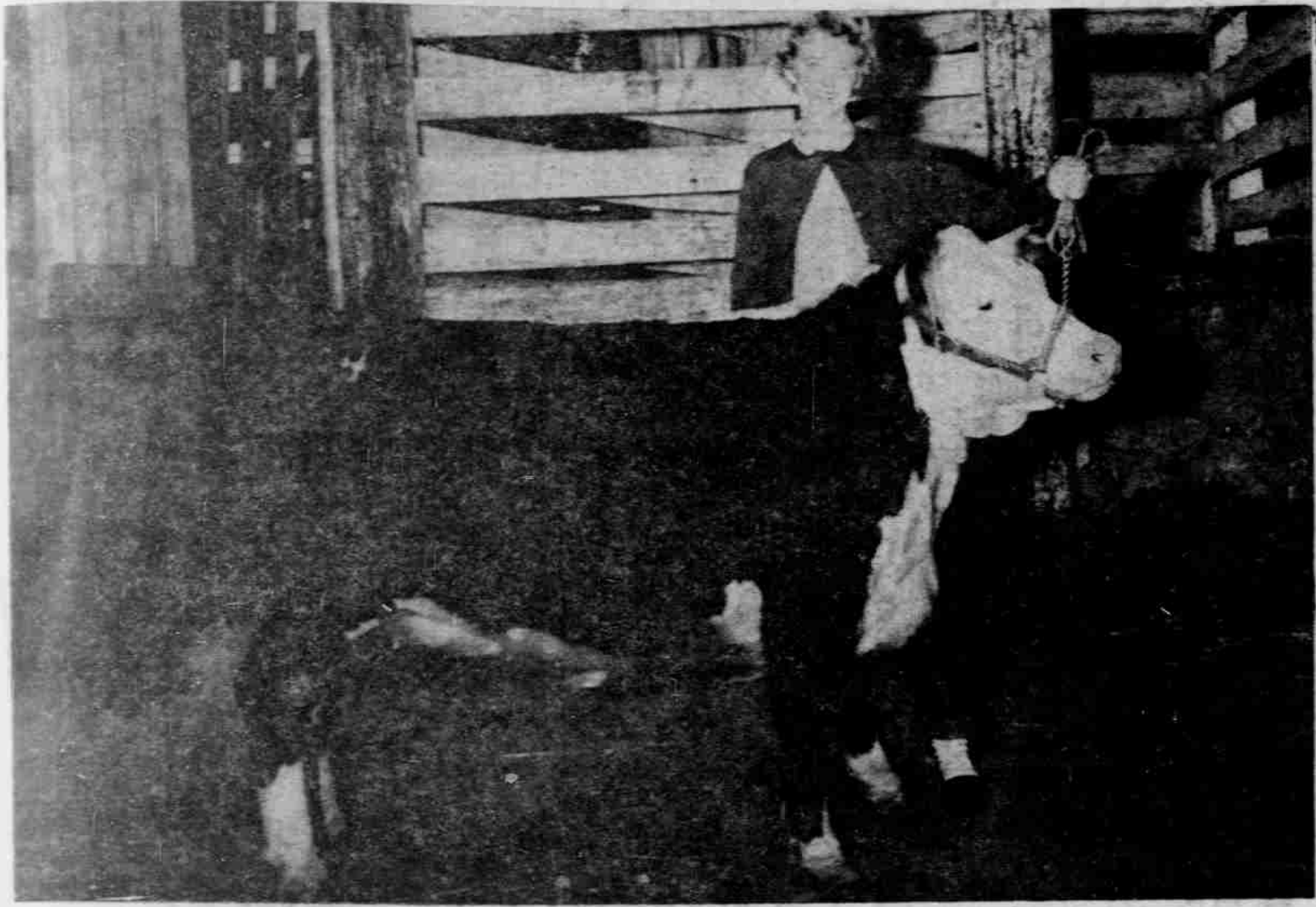


# Nebraska Farm Tax Up 30%

## FARM NEWS REVIEW

### Reserve Champion Heifer



Nancy Todd of Murray reserve champion purple award heifer brought \$27 per hundred at a calf sale last Saturday following the King Korn Carnival Kalf show. The animal went to Soen-

Taxes on Nebraska farm real estate, based on \$100 of valuation as a common denominator, have increased 30 per cent since 1930, while in most states the trend has been downward. The U. S. average dropped 24 per cent in the same period.

This fact, based upon studies of the Agricultural Research Service of the United States Department of Agriculture, was pointed out today by Charles Marshall, President, Nebraska Farm Bureau Federation.

The USDA study makes comparisons on the basis of tax payments per \$100 of valuation of farm land in 1930 and 1954. The study shows the following comparisons between Nebraska and its neighbor states: Change from 1930 to 1954; Nebraska, plus 30 per cent; South Dakota, down 11; North Dakota, down 27; Kansas, down 8; Oklahoma, down 56; Minnesota, plus 4; Iowa, plus 3 1/2; Missouri, down 13; U. S. Average, down 24.

The organization leader pointed out that no neighboring state approached the 30 per cent increase shown by Nebraska between 1930 and 1954; and that the U. S. average in land tax payments declined 24 per cent per valuation in the same period.

Marshall said that comparison based on \$100 of valuation gives the fairest picture of relative tax payments among the states. The value of land may vary from state to state and fluctuate from year to year, but the use

of \$100 valuation is a common denominator which can be used to accurately compare land taxation payments and trends among states.

As an example, the farm leader said New Jersey and Nebraska are often linked in discussions of taxation as having first and second places, respectively, in having the lowest per capita taxes in the nation. The USDA research service study shows a different picture, however, when the correct common denominator is used. New Jersey has the highest per acre tax on real estate in the nation, but the tax paid in New Jersey per \$100 of land valuation was lower in 1954 than in 1930 by seven per cent. New Jersey farm owners paid \$1.67 per \$100 of valuation in 1930 and \$1.55 in 1954. On the other hand, Nebraska farm owners pay 30 per cent more per \$100 of land value in 1954 than in 1930.

New Jersey is distinguished from Nebraska in another way, Marshall concluded.

According to the study of the Kansas Legislative Council, made in 1954, New Jersey has not made a general fund property levy for state government since 1870; and in 1946 eliminated all special state levies on property. New Jersey, therefore, has no state levy on property. Nebraska has a total state levy of approximately 10 mills.

### Cass County Four-H Members Score Heavily at Ak-Sar-Ben

Cass 4-Hers At Ak-Sar-Ben Competition is keen at the Ak-Sar-Ben 4-H stock show but Cass County 4-H members brought home a share of the awards, Clarence.

In order of their occurrence the following awards were received in competition.

Marilyn Pollard, Nehawka, Holstein calf, blue.

John Knabe, Nehawka, Hampshire market swine, 1 purple (champion Hampshire and reserve champion market hog of the show), 1 blue and 2 red. He also showed a blue ribbon pen of 3 and won the swine showmanship contest.

Charles Stoehr, Plattsmouth, Duroc market hogs — 2 red and 1 white. Charles also more or less stole the swine showmanship contest where he placed 5th.

Leonard Hild, Plattsmouth, Crossbred market hogs, 1 blue, 3 red and a red ribbon pen-of-3. Leonard also was selected to compete in the swine showmanship but did not place in the top 10.

Bill Weiss, Plattsmouth, Hampshire lambs, 3 blue, 1 blue pen-of-3 lambs and red ribbon Hereford steer. Bill placed 9th in the sheep showmanship contest.

Hunter Ingwerson, Plattsmouth, pen-of-5 steers, blue; pen-of-5 heifers, blue; Angus heifer, red; Angus steer, red.

Ellen Kay Born, Plattsmouth, Angus heifer, blue; Hereford steer, red.

Carroll Schmidt, Plattsmouth, Reserve champion pen-of-5 steers, purple; champion pen-of-5 heifers, purple; Angus steer, red; Angus heifer, red.

Nancy Todd, Union, Hereford steer, 1 purple, class 9 Hereford Steers.

Ed Bergmann, Wabash, Hereford steer, red.

Clifford Stander, Wabash, Hereford, 2 white.

Dennis Todd, Plattsmouth, Hereford steer, white; Angus steer, white.

Keith Addeleman, Louisville.

Angus steer, red.

Duane Arends, Manley, Angus Steer, white.

Bill Jameson, Nehawka, Angus heifer, 1 blue and 1 red.

Bruce Jameson, Nehawka, Angus heifer, blue; Hereford steer, red.

Dan Wehrlein, Plattsmouth, Hereford heifer, white.

Roger Wehrlein, Plattsmouth, Hereford heifer, red.

Joey Bergmann, Wabash, Hereford heifer, white.

Fred Meisinger, Plattsmouth, Hereford steer, red.

The Cass County livestock judging team composed of Bruce Johnson, Joey and Ed Bergmann place 16th.

County Awards, Herdsmanship on Beef, red. County group of the swine owned by 3 exhibitors, a blue award.

The Republicans recently pledged to "work night and day" to stop skidding farm prices.

### Serum Field Day Set Buchholz Farm Southeast Murdock

A special serum field day for farmers in this area is announced by Nebraska Farmers Union.

The event will be Oct. 10 at the Harry Buckholz farm, two miles south and 2 1/2 miles east of Murdock and will start promptly at 1:30 p. m.

Featuring actual vaccination of live animals, the demonstration will show farmers how to vaccinate their livestock safely and economically.

In addition, the afternoon program will include a discussion of profitable livestock management and similar topics of interest to farmers.

All farmers in the area, whether members of Farmers Union or not, are invited to attend the serum field day. There is no charge.

### Born Calves Bring Ak-Sar-Ben Ribbons

Attending the Ak-Sar-Ben Rodeo this week and participating in the 4-H activities was Ellen Kay Born, daughter of Mr. and Mrs. Don Born, Plattsmouth. She attended the 4-H banquet that was sponsored by a retailing store there Wednesday.

Miss Born won a blue ribbon on the Angus heifer and a red ribbon on the hereford steer in the final judging Tuesday and Wednesday.

Friday the 4-H entries were auctioned with Miss Born's calves sold to Watson Bros. of Omaha. The heifer weighed in at 850 pounds and sold for \$25.25 per hundred. The steer weighed 885 pounds and brought \$26.75. The sale of the ribbon winners took place at the coliseum.

This ends Miss Born's career in 4-H work, marking five years membership in the Blue Ribbon Baby Beef and Sheep, Mynard Merry Maidens and the Boot N Spurs, which is no longer in existence.

The Born family are moving to California this fall.

ATLANTIC FLIGHTS

Flights between the United States and Europe by commercial air lines during July totaled 2,559—a flight every seven minutes—according to Fred B. Lee, Civil Aeronautics Administrator. Pan American Airlines made the most flights, 582, with Trans World Airways second with 440 flights.

### Champion Market Hog



Jim Ingwerson of Plattsmouth holds up the big ribbon his steer won at the Kass County King Korn Carnival Kalf show for being the grand champion steer. The steer was sold at the calf sale at the Plattsmouth sale barn last Saturday for \$31 per hundred to the Hinky-Dinky Stores. The 1,175-pound animal brought a total of \$364.25.—Journal Photo.

### Davis Memorial Fund Near \$1,000

LINCOLN — Friends of the late assistant State 4-H Club leader Guy R. Davis have contributed a total of nearly \$1,000 to his Memorial Fund, reports Duane Loevenstein, assistant state 4-H club leader.

The Memorial Fund developed after Mr. Davis' death in an auto accident near Alliance last June.

Plans are underway for developing improved 4-H camping facilities in the state. It is hoped that enough money will be given to the fund for a camp lodge or recreation hall to be erected to Mr. Davis' memory.

Extension workers, county 4-H committees, friends and business associates have made contributions from \$1 to \$25 each. Local 4-H clubs have sent in \$1 or 2 per club. The State Rural Youth group contributed \$300.

Anyone wishing to contribute may make a check payable to the Guy R. Davis Memorial Fund and send it to his local county extension agent or to State 4-H Club Office, College of Agriculture, Lincoln, Neb.

**REAL ESTATE LOANS**  
on Farms and Country Homes

Low-Cost Amortized Prompt Service Pre-payment Options

Ask for our free booklet explaining the Equitable Society's modern financing service

**STEVE DAVIS**  
Plattsmouth State Bank Building  
Phone 6111

### Homemakers' Day Oct. 12, Lincoln

LINCOLN — Nebraska homemakers attending the third annual Home Economics Day for Homemakers at the University of Nebraska, Oct. 12, will begin the day's activities at a 9 a.m. coffee get-together in the College Activities building on the college of agriculture campus.

The day's program will end at 3:30 p.m., announced Florence Atwood, state home extension leader.

U. S. OUTPUT

Industrial production in this country rose moderately in August to a new high. The Federal Reserve Board reported its index of industrial production was at 140 per cent of the 1947-49 base. This compares with a revised and seasonally adjusted index of 139 in July and June.

### Pork and Chicken Lead October Food

LINCOLN—Pork and broiler and fryer chickens lead the list of plentiful foods in Nebraska during the coming month, reports Everett E. Peterson, extension agricultural economist at the University of Nebraska.

Lamb and beef are the other two meats you should find in plentiful supply and reasonably priced at your grocer's during October.

Rice and potatoes are both more abundant than they were at this time last year.

Grapes, canned tuna, lard, vegetable fats and oils and cheese and other dairy products complete the list of Plentiful Foods for the month of October.

**the Quonset 32**

YOUR ANSWER TO FARM BUILDING NEEDS

Look to the Quonset 32 for what you need in the farm-building line.

It may be a building for the safe storage of feed of all kinds. Quonset 32 is the answer.

Or for machinery and implement housing. Quonset 32 is a natural here, too.

Or for stock shelter. All over the country, Quonset 32's are paying off in this very service.

ALL-STEEL CONSTRUCTION, with N-A-X HIGH-TENSILE alloy steel used for framing, gives the Quonset its strength and durability.

NAILABLE STEEL FRAMING gives it adaptability... interior wall material, insulation, partitions, etc., are easily nailed in place.

QUICK ERECTION, by locally available labor, is a factor in the building's moderate in-place cost.

And never forget: the Quonset 32 is rot-proof, warp-proof, non-combustible and wind-resistant.

We are ready with more facts and figures.

32 feet wide; length to suit, in 12-foot sections.

**B & C Steel Corporation**  
P. O. Box 468 — Havelock Station  
Lincoln, Nebraska Phone 6-5357

QUONSET BUILDINGS ARE PRODUCTS OF GREAT LAKES STEEL CORPORATION

### More Farmers Now Eligible For ASC Help

Farmers in Cass County, who are considering conservation practices this fall and winter and need assistance through the Agricultural Conservation program, will find themselves in a better position to get that help than they have for many years, Ivan G. Althouse, chairman of the Cass County ASC Committee said today.

In 1954 a law was passed that ACP assistance could be offered to any farmer who did not comply with all acreage allotments on his farm, but effective with the 1955 crop year there are no allotment restrictions tie to ACP. This puts any farmer in Cass County, regardless of whether or not they over planted their wheat or corn allotment, in a position to undertake conservation measures with the aid of ACP who were previously ineligible for this help.

The Agricultural Conservation Program shares with farmers the cost of many conservation practices that are considered in the interest of the Nation as a whole, but Mr. Althouse says that at this time we are particularly interested in those conservation practices which will prevent or at least alleviate the serious erosion problems which always occur after an extended drought, such as we have experienced this summer.

Mr. Althouse says that any farmer who needs assistance to help with conservation practices of this nature, should immediately get in touch with the ASC office at Weeping Water either by telephone or by personal visit.

**new style! new comfort! new power!**

## new Internationals!

**Functionally Styled for Practical Good Looks!**

Here are the new INTERNATIONALS... great from any point of view! Their clean-lined styling is trim and functional—designed to take the rough going of truck work without excessive repair costs.

**Driver-Designed for Real Comfort!**

And they give you real comfort, too! They're driver-designed to let you work longer without fatigue. Loaded with performance and handling features that make every hauling job easier.

**More usable horsepower for BIG-Money savings!**

These great new INTERNATIONAL trucks offer more horsepower—develop their power for sustained operation at lower, more economical engine speeds. They're all truck with no passenger car engines or components asked to do a truck job. That saves you the BIG money—the over-the-years operating and maintenance money. Drive them today.

New INTERNATIONAL "5-line" includes light, medium and heavy-duty models from 4,200 to 33,000 lbs. GVW, 10 gasoline, LPG engines, every modern truck feature.

You relax in REAL comfort in Comfo-Vision cabs. Comfort-angled steering wheel. Low hood for closer view ahead. "Quiet-ride" roof lining, draft-free door seals. A wide variety of solid and two-tone exterior colors. Optional deluxe cabs have color-keyed interior, chrome trim.

**INTERNATIONAL TRUCKS**

**Stites Farm Equipment Company**  
Chicago Ave. Plattsmouth Dial 267