

2nd BIG WEEK!

IGA BRAND SWEEPSTAKES

Complete this statement in twenty-five words or less:

"I prefer IGA brands because....."

Win one of these valuable prizes . . .
GRAND PRIZE - 18 cu. ft. Deluxe AMANA Upright food freezer . . . PLUS . . . \$1200 in food. (\$200 in Snow-Crop frozen foods and \$1000 in any IGA brand merchandise.)
 • 5 other 18 cu. ft. Deluxe AMANA Upright food freezers.
 • 69 8 cu. ft. horizontal AMANA food freezers.
 • 1000's of KNAPP-MONARCH Chefsters 7-in-1 Deep Fryer All-Purpose Table Cookers.

No Purchases Are Required!

The entry statement may be made on the back of an IGA label, or on any blank paper and deposited in contest entry box in your local IGA store. If, however, the entry is attached to any six IGA labels, a bonus of \$100.00 will be added to each of the five regional prizes and the Grand Prize.

CONTEST CLOSSES WEDNESDAY, OCT. 21, 1953

FREE \$31.95
KNAPP - MONARCH
CHEFSTER
Cooks Food 7 Ways

This unique and useful kitchen dream will be given absolutely free to the winning entry in Plattsmouth area in the IGA Sweepstakes Contest

APPLES
 GANO

10c LB.

Cranberries

White Marsh Seedless

Grapefruit

POUND

25c

POUND

7c

IGA All-Purpose
 ENRICHED
Flour

5 LB. BAG

43c

Fairmont Frozen Foods

6 OZ. Orange Juice 2 FOR 41c

12 OZ. Broccoli - 25c

12 OZ. Peas - 21c

12 OZ. Brussel Sprouts 29c

Delrich
 Margarine

2 lbs.

49c

Sunshine
 Krispy
 Crackers

1-lb. Box

25c

MY - T - FINE
PUDDING PKG. 5c

IGA Extra Fancy
FRUIT
Cocktail

303 Can

24c

Dawn Quality
Toilet Tissue

4 Rolls 35c

Towels 19c

Sno-Kreem
SHORTENING

3-lb. Can 79c

IGA Extra Fancy
FRUIT
Cocktail

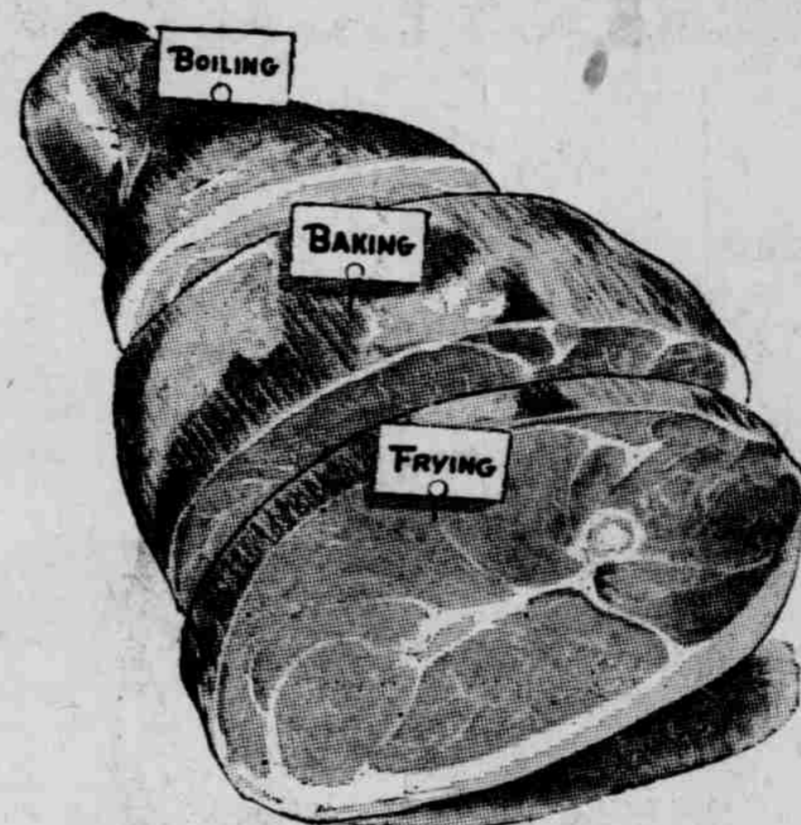
303 Can

24c

Dawn Quality
Toilet Tissue

4 Rolls 35c

Towels 19c



Hormel
 Ready - to - Eat
HAMS

8 to 12 lb. Avg.

POUND 55c

FRESH
GROUND
BEEF

"Taste The Difference"

3 POUNDS

\$1.00



IGA **PORK & BEANS** - - - 10c

Cascios Frozen **Tomato & Cheese Pizza** 10 OZ. PKG. 69c

Soennichsen's
BLACK & WHITE

- Established 1889 -

PHONE 238

PLENTY OF SUPERVISED FREE PARKING ON LOT IN BACK OF OUR STORE