

# Patrol Officer Says Drivers Are Cause Of Deaths

Every holiday motorist, who'll start tonight on a four-day hurried trip, could have benefited by attending the Tuesday session of Plattsmouth Rotary Club.

At that session, Capt. Don Scherer, head of the state safety patrol, showed a few "horror pictures" which pictorially showed the horrors of motor vehicle accidents. He had a few statistics and a few words of general advice about highway accidents.

Coining a well-used phrase, Capt. Scherer explained that the "costly part of an auto is the nut that holds the wheel." That "nut" causes a death every five and one-half minutes and an injury every three seconds.

Capt. Scherer explained that inattention by drivers fills more hospital beds than any disease. "Driving is a full-time job," according to the Safety Patrol Expert, who pointed out that 60 percent of all accidents involve only one auto.

Inattention to road signs as well as driving habits are causes of accidents and highway deaths. Citing an example, Capt. Scherer told of the man who consistently failed to stop at a stop sign on a highway entrance from his farm. Despite

repeated warnings and arrests, the man continued to enter the highway without stopping until we picked him up in a basket," Capt. Scherer said in elaborating on the "horror" details.

Explaining the work of the patrol, Capt. Scherer said that 175 employees attempt to supervise more than 100,000 miles of Nebraska roads. The patrol boasts a record of 97.5 percent convictions, tops of all 48 states, he said.

Capt. Scherer was a guest of Rev. Harold V. Mitchell, program chairman, who dubbed for Dr. L. A. Amato, currently on vacation.

Other highlights of the Tuesday session of Rotary included a report of the swimming program and announcement of a program for assisting handicapped children at Plattsmouth.

J. Howard Davis analyzed the swimming program for Rotarians, sponsors of the five-day free swim project. The program closed last Friday.

Aiding handicapped children, a new Rotary project, will be carried out in cooperation with Mrs. Robert Reade, speech therapist at Plattsmouth high school and specialists at Omaha. Seven youngsters of the community received complete examinations Wednesday afternoon at Aquilla court in Omaha.

Visiting Rotarians at the Tuesday noon meeting included F. F. Nebersall, W. J. Kerkbrute and Bert Baldwin of Omaha; and Leon E. Geer of North Platte. B. H. G. Eiting also had a guest at the meeting.



## Nebraska's Oceans

Have you watched the waving oceans of wheat? The warm Nebraska wind touches the edge of the field, starting a ripple. The wave rolls on over like the swells in a sea.

Soon, Nebraska's "oceans" will be harvested. Gushers of golden grain will pour into bins all over the state. Nebraska will add another tremendous wheat harvest to the world's market basket.

All Nebraskans can well be proud of their part in feeding the world.

Nebraskans can be proud too, that their state is known for having a brewing industry which carries on a vigorous educational campaign among its retailers. Nebraska tavern men are known as sincere merchants who strive to conduct their places in the public interest.

## NEBRASKA DIVISION

United States  
Brewers  
Foundation  
710 First Nat'l Bank Bldg., Lincoln

## Weeping Water Woman Dies

Mrs. Lillian Harmer, resident of Weeping Water for 42 years, died at Weeping Water on Wednesday, June 2, 1952. She was 78 years old.

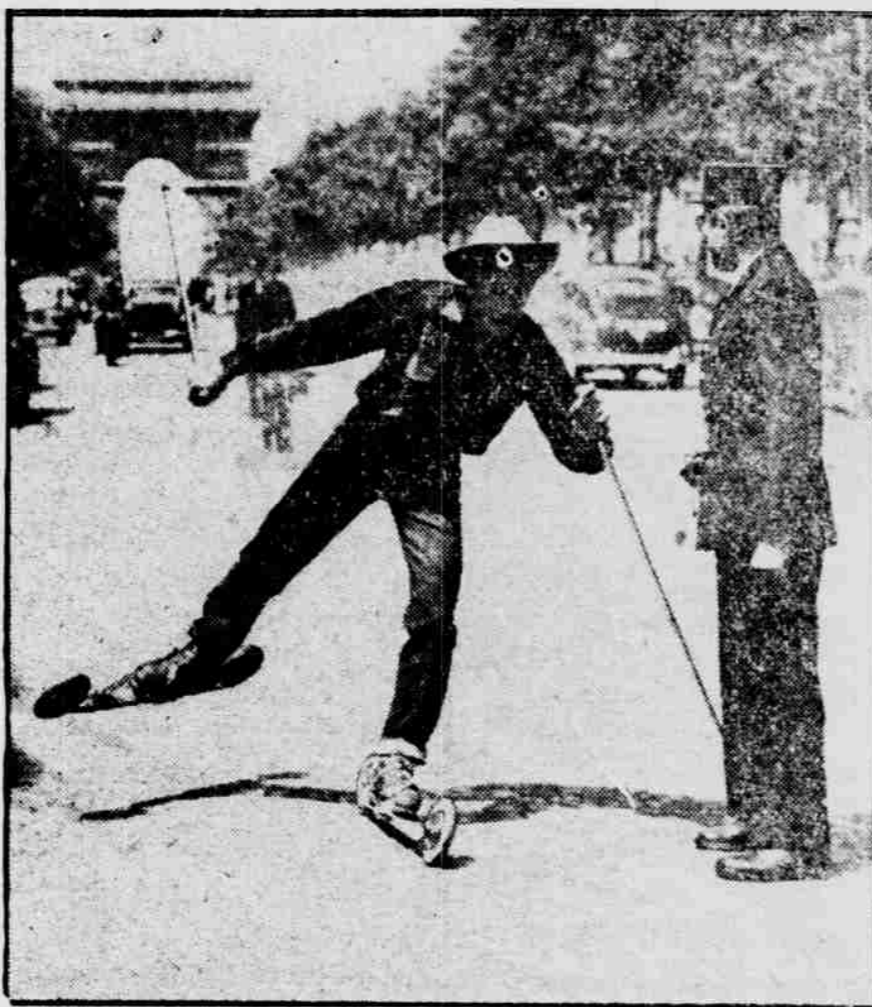
A member of one of Omaha's first families, Mrs. Harmer was the daughter of the late Frederick DeLonge, who built and operated one of the first hotels at Omaha.

Surviving are a daughter, Mrs. Oage Nielsen of Omaha; sisters, Mrs. Amos Hrabik of Meadow, Mrs. Rosemary Eaton and Miss Marion Harmer of Weeping Water; and a brother, Warren Harmer of Weeping Water.

## Sewer Connections Are Okay'd; Request To Cut Curb Allowed

Requests for connecting to a sanitary sewer on Avenue G were authorized for C. E. and Helen Ledgway and Paul T. Kersten by the city council Monday night.

Kersten is planning to build on lots adjacent to the avenue. Councilmen also approved the request of Lloyd Fitch to cut curb on Oakmont drive for a driveway.



PARISIAN "SKI-REWBALLISM" — S'no snow in Paris these warm summer days, so French Olympic ski champion Henri Oreiller, who is also a singer and composer in a Parisian cabaret, gayly "skis" down the Champs Elysees on a pair of wheeled skis. The apparently uncontrolled gendarme gives the impression that such stunts are as common in France as in the U. S.

## County Gas Tax Returns Below State Average

A comparison of the gas tax receipts returned to several counties in this part of the state shows that there was a large increase in funds available for county road maintenance and construction during the post-war period.

This is the conclusion drawn by Leonard D. Bronder, research director for the recently organized Nebraska Citizens Council, after undertaking a study of highway finance at the request of the Council's members.

Otoe, Cass, Richardson, and Nemaha counties' receipts from the state gas tax increased less than the state-wide increase from 1941 to 1951. The state-wide average jumped 74 per cent while the above mentioned counties receipts rose to a level 61 to 72 per cent higher in 1951 than in 1941.

Johnson and Pawnee county receipts rose faster than the state-wide figure. These two counties received increases amounting to 85 and 94 per cent respectively of their 1941 receipts. The amount of gas tax money going to Sarpy county in 1951 was 113 per cent greater than a decade ago.

The counties received 30 per cent (1 1/2 cents a gallon) of the gas tax, and 20 per cent (1 cent) earmarked for rural mail routes. The remaining fifty per cent goes to the State.

Ten per cent of the money returned to the counties is allocated to cities and villages throughout the state on the basis of non-farm population. The 90 per cent that is left goes into county road and bridge funds for use in non-urban areas. These funds are allocated to all the counties in the state on the basis of farm population and motor vehicle registrations with equal importance given to each factor.

Before the war, counties received gas taxes from the state on the basis of their motor vehicle registrations only. If a county had 10 per cent of the motor vehicles it would receive 10 per cent of the funds from the gas tax which were returned to counties, explained Mr. Bronder.

The present method of allocation was set up in 1943. Under this formula rural areas receive a greater share than before. This explains the smaller increase in gas tax funds reported to Otoe, Cass, Richardson, and Nemaha counties as compared to surrounding areas which are more rural.

Gas tax receipts between May 1949 and November 1950, considerably increased due to the 1-cent increase, which was repealed by the voters at the election in November 1950. Gas tax receipts are therefore running about 18 per cent lower during the present fiscal year which ends June 30 as compared to the fiscal year which ended last June.

Cass county received \$84,204 in 1951 from the gas tax in comparison to \$55,316 in 1946 and \$50,805 in 1941, for a ten year increase of 66 per cent. Mail Route revenue during 1951 was \$56,136.

Otoe county showed only a 61 per cent increase and received \$94,653 in 1951 compared with \$58,946 in 1941 and \$61,326 in 1946. Its Mail Route revenue was \$63,102.

On the other hand, Sarpy county climbed 113 per cent from \$35,784 in 1941 to \$76,056 in 1951. Its 1946 portion was \$47,053, while its 1951 mail route share was \$50,704.

## Cool Weather In Utah, Lady Writes

"We have been enjoying cool weather while the mid-west has been sweltering. Last week found everyone wearing jackets or sweaters at work, while the gas and oil companies were flooded with calls to 'turn on the heat.'" Darlene Hennings writes from her home in Ogden, Utah.



by JAMES C. OLSON, Superintendent STATE HISTORICAL SOCIETY

The history of Banner county, like all of the southern half of Nebraska's panhandle, traces back through old Cheyenne county, established by the legislature in 1867, and embracing the area included in the present counties of Kimball, Cheyenne, Deuel, Garden, Morrill, Banner and Scotts Bluff.

The population was so scarce in the region that such an arrangement worked very well for a while. Indeed, until 1870, Cheyenne County remained unorganized and was simply attached to Lincoln County for administrative purposes. In that year, however, the county showed a population of 190 and an organization was established.

In 1888, the voters of Cheyenne County approved the creation of Banner, Deuel and Scotts Bluff counties out of part of the area embraced in the original county. The name "Banner" was chosen because it expressed the hope of some of the new county's enthusiastic citizens that it would indeed become the "banner county" of the state.

The early whites in Banner County had been occupied almost exclusively with cattle raising and much of the county consisted of free range land used by the larger ranches. In the eighties, however, homesteaders began to come in, and by the time the county was organized, much of the land had been taken. The homesteaders, however, found the going tough and many of them moved away.

The first population figures returned for Banner County were those of the census of 1890, which shows 1,321. A number of villages—or at least combination stores and post offices—were started in the county's early days, but only one remains, Harrisburg, the county seat, with a population of about 100.

In Banner County is located the highest spot in Nebraska, an elevation of 5,340 feet, just inside the Wyoming line, about midway between the north and south boundaries of the county. The high tablelands of the county posed a serious problem for the early settlers, with some of them having to dig 200 feet and more to secure water.

Today the lands of Banner County support some of the state's finest wheat fields, and wheat is by far the county's leading crop.

Mr. and Mrs. Wallie Reed and family arrived Wednesday for a visit at the home of Mrs. Reed's parents, Mr. and Mrs. Ivan Taylor as well as old friends.

Surface mining of bituminous coal is carried on in 20 states.

## Former Publisher, C. E. Witherow, Dies Recently

C. E. Witherow, 85, for many years well known in newspaper circles of Nebraska and southwest Iowa, died at a Nebraska City hospital Tuesday night.

Mr. Witherow was for a number of years a resident of Plattsmouth, being engaged in working on the Journal, the Evening News and Plattsmouth Post. He established and operated the Weekly Tribune in this city shortly after the turn of the century. Later he established the Thurman, Iowa, Times that he published for some 35 years. In later years he was editor and publisher of the Palmyra Item until his health forced his retirement four years ago. He has since resided in Nebraska City.

His death followed by two weeks that of his son, Elmer Witherow, 60, retired farmer of near Union.

Survivors include daughters, Mrs. A. L. Naviaux, Omaha, and Mrs. C. W. Conklin, Palmyra; seven grandchildren and fourteen great-grandchildren.

Funeral services were held Friday at St. Mary's Catholic church, Nebraska City, and burial was at the St. Mary's cemetery.

## Paving District Lacks Signatures

City Attorney Harold Lebens reported Monday night to the city council that a request for paving in the vicinity of Second street and Fourth avenue is invalid. Lebens reported that the petition lacks sufficient names. According to the city attorney, the petition carried only 15 legal signatures of 26 residents in the area to fall under the required 60 per cent needed. The paving petition was filed with the council on June 6.

## BULL WRECKS FREIGHT

VIDALIA, Ga.—A 1,500-pound Hereford bull challenges the right of a freight train to pass. Result: The Diesel-powered locomotive and eight cars of the Georgia and Florida railroad freight, the Blue Goose, piled matchwood style across the tracks. The bull, owned by Cannie S. Dapis, a stock farmer, was killed.

## At The Cass County Court House

Francis M. Casey has filed suit in district court against Loyd Hohman and Idelle Hohman seeking \$2,006.80 dues in attorney fees.

Petition for divorce has been filed in district court by John A. Marquardt against Nancy Marquardt. The petition charges extreme cruelty. The couple was married in 1945 at Brisbane, Australia. They have one adopted child.

Winifred Williams has filed petition in district court for divorce from Walter J. Williams, also known as Lefty Williams. Her petition charges extreme cruelty and asks for household goods and alimony. They were married June 10, 1951.

Juan Martinez was fined \$10 and costs in county court after pleading guilty to a charge of no operator license, filed by Patrolman Syslo.

Lambert Mills of Lincoln was fined \$15 and costs in county court on a charge of speeding. Mills pleaded guilty to the charge filed by Patrolman C. E. Whitney.

Estate of Frank E. Pulec has been filed in county court by Attorneys Clements and Clements. It asks the appointment of Mollie Pulec, administratrix.

Swimming at Merritt's Beach on Thursday were Mr. and Mrs. Clayton Cooper, Roland Cooper, Corrine Wiles and Clarence Carter of Weeping Water.

Subscribe to The Journal



FOR Men, Women & Boys - SMITH'S - MENS WEAR

Subscribe to The Journal

**VICTOR COMPLETE HOG PELLETS**  
Car On Tracks  
**\$87 PER TON**  
AVAILABLE FRI. AND SAT.  
**BRUBACHER STORE**  
Phone 1211 Murray

**COLE'S NEW SAFETY VAULT FILING CABINET**  
**\$52.00**  
No. 197Y

Small enough to fit any nook, large enough to keep letters, bills and personal papers orderly. A steel safety vault protects valuables (only YOU know the combination). Two ball-bearing letter files. 3 1/2" high, 1 1/2" wide, 17 1/2" deep. Cole gray baked enamel finish.

With plunger-type lock for both drawers. No. 197Y-PL.....\$60.00

**THE PLATTSMOUTH JOURNAL**  
PHONE 241 409-13 MAIN ST.

**Grade A Poultry**  
Fresh Dressed Daily  
Direct From Wm. Kepler Broiler Farm  
At Wholesale Prices

Friers 57c lb. dressed wt.

Place Your Orders for 4th of July —  
Phone 5138

Fresh Grade A Eggs ..... 38c  
Ungraded Eggs ... 3 doz. for \$1.00

**Kepler Produce**  
Phone 5138 324 Main — East of Courthouse

Report of Condition of  
**THE MURRAY STATE BANK OF MURRAY, NEBRASKA**  
Charter No. 578  
at the close of business on June 30th, 1952

ASSETS	
Cash, balances with other banks, including reserve balances, and cash items in process of collection	\$ 238,169.21
United States Government obligations, direct and guaranteed	788,753.10
Obligations of States and political subdivisions	24,032.36
Loans and discounts (including \$469.15 overdrafts)	511,168.75
Bank premises owned \$1.00	1.00
<b>TOTAL ASSETS</b>	<b>\$1,562,124.42</b>
LIABILITIES	
Demand deposits of individuals, partnerships, and corporations	\$ 996,034.97
Time deposits of individuals, partnerships, and corporations	366,889.50
Deposits of States and political subdivisions	75,982.32
Other deposits (certified and officers' checks, etc.)	14,164.10
<b>TOTAL DEPOSITS</b>	<b>\$1,453,070.89</b>
<b>TOTAL LIABILITIES</b>	<b>\$1,453,070.89</b>
CAPITAL ACCOUNTS	
Capital*	\$ 25,000.00
Surplus	50,000.00
Undivided profits	24,053.53
Reserves	10,000.00
<b>TOTAL CAPITAL ACCOUNTS</b>	<b>109,053.53</b>
<b>TOTAL LIABILITIES AND CAPITAL ACCOUNTS</b>	<b>\$1,562,124.42</b>
*This bank's capital consists of: Common stock with total par value of \$25,000.00	
MEMORANDA	
Assets pledged or assigned to secure liabilities and for other purposes (including notes and bills rediscounted and securities sold with agreement to repurchase)	\$ 67,048.64
I, W. G. BOEDEKER, President, of the above named bank, do hereby certify that the above statement is true to the best of my knowledge and belief.	
W. G. BOEDEKER	
Correct—Attest A. L. CARPER LEONA BOEDEKER ) Directors No. 1866—July 3, 1952	