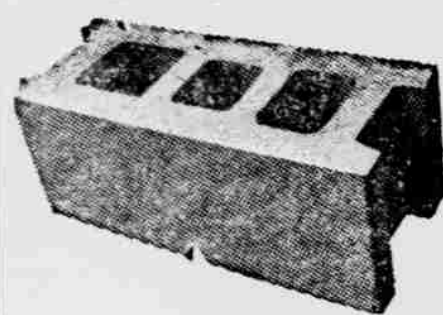


# EVERYTHING YOU NEED to Repair-Build or Remodel YOUR Farm Buildings or Home - at Rock-Bottom Cash Prices!

## CONCRETE BLOCKS



KEYSTONE OR  
IDEAL  
BEST GRADE  
22¢ Each

## PORTLAND CEMENT

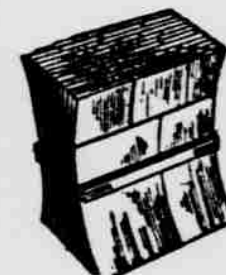


Repair  
Your Home  
Now and Save

In Paper Sacks  
• Foundations  
• Sidewalks  
• Brick Laying  
AT A SPECIAL SAVINGS  
92¢ Per Bag

## RED CEDAR SHINGLES

No. 1  
XXXXX



Galvanized Shingle  
Nails, 2-lbs. . . . 35c

\$10.90  
Sq.

## INSULATION

Pays for itself in  
COMFORT and SAVINGS

BRINGS  
COOL-COMFORT  
TO YOUR HOME!

## INSTALL BALSAM WOOL

Sealed Insulation

16" and 24" Wide, Standard  
Thick, Per 100 Sq. Ft. . . . \$4.95  
16" and 24" Wide, Double  
Thick, Per 100 Sq. Ft. . . . \$7.11

## Brighten Things Up with CHIEF Paints

### CHIEF ONE COAT FLAT WALL FINISH

A Genuine OIL Paint!  
One coat covers most paint-  
ed surfaces! Smooth, beau-  
tiful and velvet like!

• Self-Sealing \$4.10  
• No Brush Marks  
• Choice of Colors Gal.

"CHIEF" EXTERIOR PAINTS OUTSIDE WHITE 5 Gal. Lots Gal. \$5.00

## BUILD YOUR OWN RECREATION ROOM

or REMODEL Your Attic  
for Extra Room

IT'S EASY  
and Attractive  
with these

*Do It Yourself!*  
Increase The Value of Your Home

## FIR PLYWOOD

Paint or Varnish it to fit  
your own color scheme

4'x8' 1/4" Fir 3 Ply  
Panel, Good One  
Side, Per  
Sq. Ft. . . . . 14¢  
4'x8' 3/4" Fir 3 Ply  
Panel, Good One  
Side, Per  
Sq. Ft. . . . . 17 1/2¢

4'x8' 1/4" Fir 3 Ply  
Panel, Good Two  
Sides, Per  
Sq. Ft. . . . . 30¢  
4'x8' 3/4" Fir 3 Ply  
Panel, Good Two  
Sides, Per  
Sq. Ft. . . . . 26¢



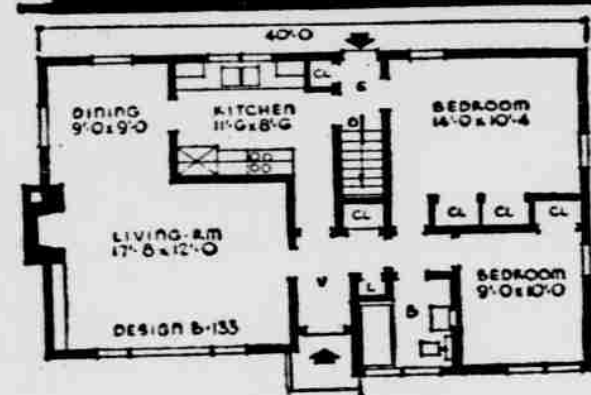
PLYWOOD  
PANELS

## PLANNING TO BUILD A NEW HOME?

Let us help you with Practical Plans  
and Quality Materials at Lowest Possible Cost



SEE US NOW  
SAVE TIME  
AND MONEY, TOO



THE BRIGHTON has a long but narrow floor plan that gives the house a larger appearance than actually exists. There are two bedrooms, bath, kitchen and combination living-dining room, with full basement. There is excellent circulation between rooms, all can be reached from the front hall without passing through any other room. Kitchen cabinets are on opposite walls with refrigerator and sink on outside wall and sink under windows. Living-dining room is L-shaped with cross-light. Living room has large picture window unit in front and fireplace on end wall. Bedrooms have wardrobe type closets. Entrances have coat closets and linen closet. Exterior has asphalt shingle roof and wide siding wall finish with a recessed entrance. Dimensions are 40 feet by 24. Area is 915 square feet, cubage 17,842. For further information about THE BRIGHTON, see us.

Keep the kids  
Busy this  
Summer - Build  
them a Sandbox

**SAVE MONEY WITH MOTH-PROOFING**  
Install RED CEDAR CLOSET LINING  
An Investment in Protection — Install It Yourself  
3/4" Thick, Tongued and Grooved,  
Tennessee Red Cedar Closet Lining, Per 100 Ft. . . . . \$21.60

## LADDERS

Replace unsafe old Ladders  
NOW



2 way type  
10-ft. size  
\$10.80

## LIME YOUR LAWN NOW!



Replenish lawns with needed calcium the quick, easy way . . . use Snowflake Hydrated Lime. An application of 50 lbs. per 1000 square feet every three years is adequate for most lawns. See us for complete information on this and many other farm and home uses for Snowflake Hydrated Lime.

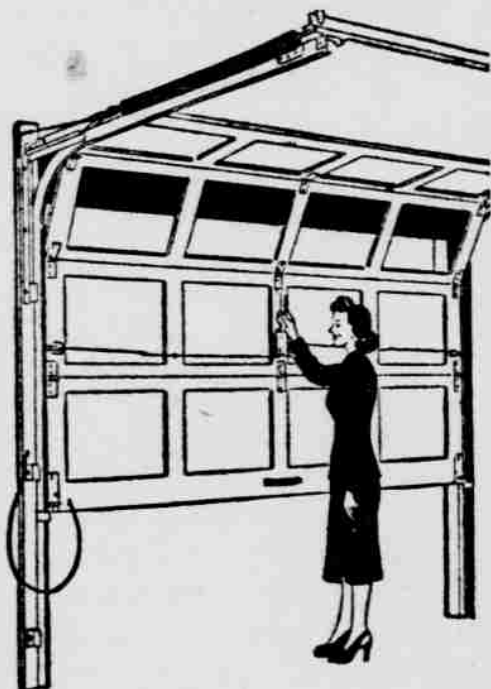
50-Lb. Bag . . . . . 75¢  
10-Lb. Bag . . . . . 25¢

## LET US SOLVE YOUR GARAGE DOOR PROBLEM

with  
MODERN

"Over-the-Top"  
Sectional Doors

• Easy to Operate  
• Increase the Value of Your Home  
See Us For The Type and Size  
To Fit Your Garage or New  
Home Plan



## NAILS Complete Selection For Every Need

## MILLWORK

for EVERY NEED

24"x24"  
Complete Unit . . . . . \$23.25

Other Sizes also in Stock

## Air Driers

ABSORBS MOISTURE FROM  
DAMP BASEMENTS, ETC.

Come in large steel pail that holds the water collected. The pail contains the neatly packed bag and the bag is placed on cross bars in the pail.

Wt. 25-Lbs. . . . . \$5.25

# PLATTSMOUTH LUMBER CO.

AT THESE PRICES IT MUST BE CASH AT THE YARD

Phone 285 L. B. Dalton -- W. B. Hoagland FIRST Ave. at Seventh St.